

VITTORIA — HUNTER



Судостроитель: HUNTER

Год постройки: 1985

Модель: Крейсерская яхта

Цена: ЦЕНА ЯХТЫ ПО ЗАПРОСУ

Местонахождение: United States

Длина общая: 31' 0" (9.45m)

Ширина: 10' 10" (3.30m)

Макс. осадка: 4' 0" (1.22m)

Купить Vittoria — HUNTER а также выбрать подходящую вам яхту из нашего каталога яхт вам поможет опытный яхтенный брокер Андрей Шестаков. На сегодняшний день компания Shestakov Yacht Sales Inc. имеет большое количество яхт в собственном списке продаж, а также тесно сотрудничает со всеми крупными яхтенными производителями по всему миру.

Для того чтобы купить яхту Vittoria — HUNTER а также проконсультироваться по любому вопросу связанному с покупкой, продажей, чартером яхт позвоните по телефону **+7(918)465-66-44**.

ОГЛАВЛЕНИЕ

ОГЛАВЛЕНИЕ	2
ХАРАКТЕРИСТИКИ	3
Обзор	3
Основная информация	3
Размеры	3
Скорость, вместимость и масса	3
Размещение	3
Корпус и палуба	3
Информация о двигателе	4
ПОДРОБНОЕ ОПИСАНИЕ	5
Features	5
Исключения	7
Отказ от ответственности	7
ФОТОГРАФИИ	8
КОНТАКТЫ	14
Контактная информация	14
Телефоны	14
Время работы	14
Адрес	14

ХАРАКТЕРИСТИКИ

Обзор

Completely Re-powered in September of 2016 with an electric engine. Featured in Boat US. Has sailed exclusively the last couple years. A very unique sailboat that was repowered with an electric engine. This boat requires no fuel to get it underway, and is fully equipped with solar panels, inverters and an onboard generator just in case it's needed. Seller has moved out of the country and no reasonable offer will be refused. Contact us today! Boat has just been stored on the hard. Rudder has been removed to be re-glassed.

Основная информация

Тип судна: Крейсерская яхта

Модельный год: 1985

Год постройки: 1985

Страна: United States

Размеры

Длина общая: 31' 0" (9.45m)

Длина по ватерлинии: 26' 4" (8.03m)

Ширина: 10' 10" (3.30m)

Макс. осадка: 4' 0" (1.22m)

Скорость, вместимость и масса

Водоизмещение: 9900 Pounds

Вместимость воды: 33 Gallons

Вместимость сточного бака: 15 Gallons

Размещение

Всего кают: 2

Всего ком. состава: 1

Корпус и палуба

Материал корпуса: Fiberglass

Комплектация корпуса: Monohull

Информация о двигателе

Двигатели: 1

Производитель: Electric

Модель: Thunderstruck 14kw 48V DC motor **Тип двигателя:** Other

Тип топлива: Electric

ПОДРОБНОЕ ОПИСАНИЕ

Features

MAIN FEATURES

- Helm w SS Steering Wheel
- Cockpit Cushions
- Excellent Cockpit Storage
- V-Berth
- Dinette to Starboard
- Settee to Port
- Galley w Stove, FW Sink and Ice Box
- Vizio Flat Screen TV
- Standard Horizon VHF Radio
- 5 Large Solar Panels (255w Range each)
- Champion 3800 Running Watt Generator (For Emergency Charging)
- 30 Amp Shore Power
- Brand New Mainsail and Jib 2016 (Older sails are onboard)
- Newer Pro-Furl Roller Furling
- 2 ea. Maxwell 23 two speed self tailing winches
- 2 ea. Maxwell 17 one speed winches
- Can Cruise 60 miles on Electric Engine w/o Sunlight
- 1 ea Inflatable 4 Person Dinghy
- 1 ea Inflatable 2 Person Raft

ELECTRIC ENGINE SPECS DC Motor kit from Thunderstruck Motors includes: *Motenergy ME1004 brushed 14kw DC motor which can do 12.8hp continuous and 25.6hp peak (replaced the original 16hp Yanmar diesel) Motor is a permanent magnet, brush type, DC Motor with Neodymium Iron Boron Magnets. 90% efficiency. 1" shaft. Weighs 35 lbs. Max speed 3100rpm. *Sevcon Millipak 4Q controller (48V 300amps peak) *PB-8 Throttle *Tyco LEV200 high-quality sealed contactor *Wiring Harness with On, Enable, and Fwd/Rev switches and 2' motor cables *Heatsink *Motor mount with 1" shaft coupler The motor was installed September 2016 and has sailed thousands of miles since! From Washington, DC and many places in between. **Sellers Description** 1985 Hunter 31' sailboat with shoal keel. All-electric powered, featuring extensive solar array and AGM battery bank, solar charge controller, onboard AC/DC inverter/charger, Bluetooth power monitor, and electric propulsion for energy-independent living/cruising. Like-new sails, used only two seasons. Headsail roller furler. All plumbing works. 30 gallon water tank with electric water pump. Interior and exterior in good shape. Solid deck with no soft spots. This boat's electric motor + battery + solar regen system is designed and tested for self-reliance. Includes a shore power charging system as a backup option. Roughly 2,000 miles of inland & ocean cruising under her belt voyaging the Atlantic coast from Washington, DC. Recently featured in BoatU.S. Magazine's February/March edition -- **Details:**

- 1985 Hunter 31.33' LOA with 10.92' beam
- 4.0' Shoal Keel
- 8 x 260Ah 12V Group 8D AGM batteries from Apex Battery
- Midnite Solar Classic 250 MPPT solar charge controller
- Thunderstruck 14kw 48V DC motor + motor controller + motor mount
- 1.2 kw solar panel array (solar canopy + removable port/starboard panels)
- Victron BMV 700 battery monitor + Bluetooth dongle
- 2000W 48V pure sine inverter charger by AIMS Power
- Madjax 30A DC power converter (to drop the 48V current to 12V)
- Interior layout includes dinette that becomes a bed, V-berth, rear-berth, port-side bench seating/bed
- Mainsail + roller furling genoa
- All standing and running rigging in great shape
- Automatic bilge pump
- Cockpit locker x 2
- Cockpit cushions
- Ladder
- 30 Amp shore power system w/ cord
- Fully functional instrument panel and working lights
- Galley ice box, sink and alcohol-fueled range
- Upholstery in good condition
- Working head
- VHF Radio
- New plough anchor
- Clean title in hand
- Owners manual

Manufacturer Provided Description The 31 is a comfortable, speedy, mid-size cruiser that takes advantage of all the latest advances in sailing components and technologies. The 31 replaces the popular 306 in the Hunter product line. The Hunter design team, led by Glenn Henderson, developed a totally new boat from the hull up, and took advantage of all the newest "marinized" components such as water heaters, AC units, inverters and refrigeration systems. These smaller, stronger and lighter parts helped engineers build a "comfort cruiser that goes fast." "We found the ideal position for weight balance and access for all the 31's advanced components to create a better center of buoyancy," said Henderson. "The result is a boat that is forgiving, well-rounded and has exceptional performance." Ergonomics and function were also carefully considered during the 31's design phase. Design engineers constructed a full-size mock-up of the interior and deck for analyzing functionality and user comfort during extensive operational and livability testing. Adjustments, sometimes only fractions of inches, were made to hardware, doors and bulkheads to achieve maximum usability and comfort. Maximum efficiency and comfort has been built into the interior of the 31. The forward cabin is larger than most boats in its class, which was achieved by adjusting the forward hull shape, without affecting performance. A private aft cabin is also provided, along with a fully enclosed head with vanity and shower. The standard galley has icebox, two-burner propane stove and stainless steel sink.

Available options include a refrigerator and microwave. Water storage is a 50-gallon freshwater tank and five-gallon water heater. New designer fabrics are used throughout, and interior lines are clean and streamlined. An Everware laminate teak and holly cabin sole is back by popular request -- Hunter customers like the look of wood but enjoy the surface's durability and easy maintenance. Air conditioning; 13" flat panel TV with DVD player; and CD stereo are some of the comfort options available. Shore power connections are handy at port, and make the 31 a great weekend or vacation cruiser. Heavy duty stainless steel handrails surround the deck. The integrated swim platform includes a telescoping stainless steel swim ladder. Auxiliary power is delivered by a Yanmar 21 HP diesel with 20 gallon tank.

Исключения

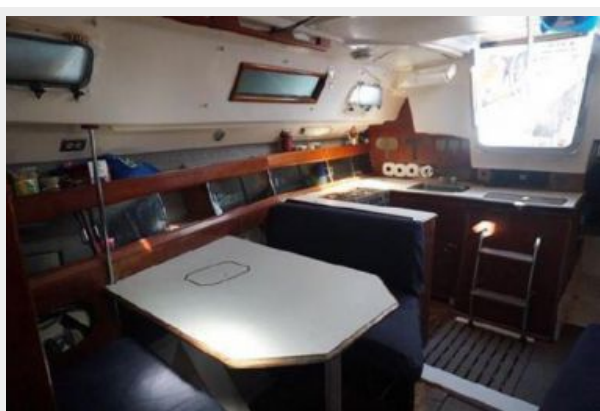
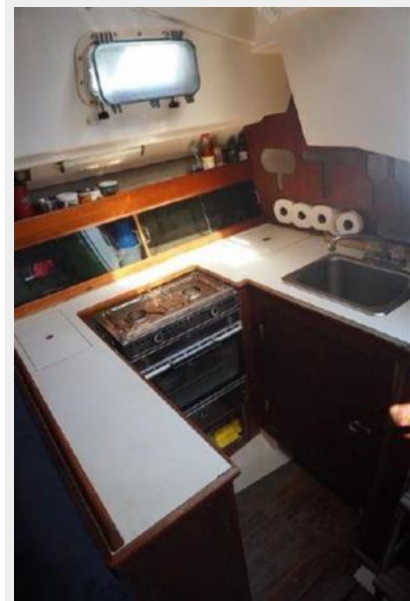
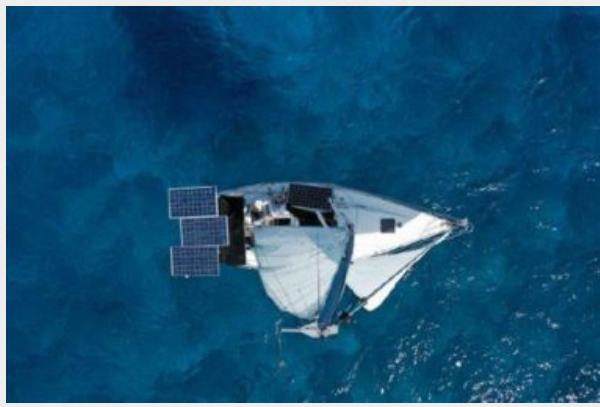
При продаже яхты исключаются личные вещи владельца.

Отказ от ответственности

Компания предоставляет описание судна или яхты добросовестно, но не может гарантировать точность этой информации, а также не ручается за техническое состояние. Покупатель должен проинструктировать своих агентов или оценщиков исследовать представленную информацию более подробно, по собственному желанию. Продажа судна или яхты, изменение цены или снятие с продажи будет происходить без предварительного уведомления.

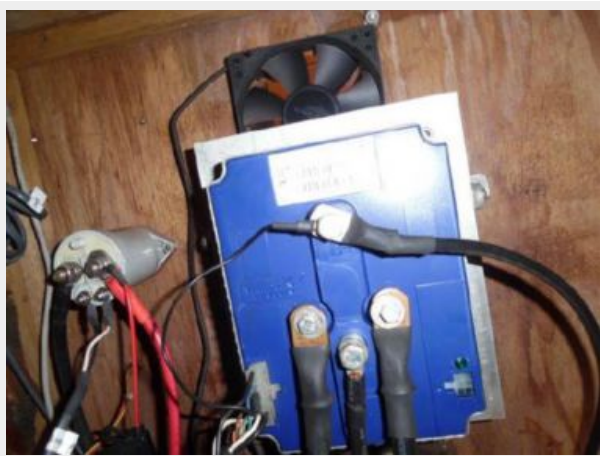
ФОТОГРАФИИ













КОНТАКТЫ

Андрей Шестаков (Andrey Shestakov) – ведущий яхтенный брокер отдела продаж яхт и судов компании Shestakov Yacht Sales Inc. Официальный представитель Shestakov Yacht Sales Inc. для русскоговорящих клиентов в центральном офисе компании в Майами/Форт Лодердейл/Флорида/США.

Контактная информация

Email: andrey@shestakovyachtsales.com

Web: shestakovyachtsales.com

Телефоны

Краснодарский край: **+7(918)465-66-44**

США, Майами, Флорида: **+1(954)274-4435**

Время работы

Понедельник – Суббота: **9:00 - 21:00**
EDT

Воскресенье: **Закрито**

Адрес



Harbour Towne Marina, 850 NE 3rd St,
STE 213, Dania, FL 33004