

32 1979 ISLANDER 32-2 — ISLANDER SAILBOATS



Builder: ISLANDER SAILBOATS

LOA: 32' 0" (9.75m)

Year Built: 1979

Beam: 11' 0" (3.35m)

Model: Cruising Sailboat

Price: PRICE ON APPLICATION

Location: United States

Our experienced yacht broker, Andrey Shestakov, will help you choose and buy a yacht that best suits your needs 32 1979 Islander 32-2 — ISLANDER SAILBOATS from our catalogue. Presently, at Shestakov Yacht Sales Inc., we have a wide variety of yachts available on our sale's list. We also work in close contact with all the big yacht manufacturers from all over the world.

If you would like to buy a yacht 32 1979 Islander 32-2 — ISLANDER SAILBOATS or would like help answering any questions concerning purchasing, selling or chartering a yacht, please call +1(954)274-4435

TABLE OF CONTENTS

TABLE OF CONTENTS	2
SPECIFICATIONS	3
Overview	3
Basic Information	3
Dimensions	3
Speed, Capacities and Weight	3
Accommodations	3
Hull and Deck Information	3
Engine Information	4
DETAILED INFORMATION	5
Features	5
Exclusions	7
Disclaimer	7
PHOTOS	8
CONTACTS	15
Contact details	15
Telephones	15
Office hours	15
Address	15

SPECIFICATIONS

Overview

Very nice shape, this boat has been refurbished over the last eight years and currently needs nothing. The boat is currently being cruised and being lived aboard in the Naples and Marco Island area and will soon be put in storage and strapped for the hurricane season. Must be seen to be appreciated. Contact us today!

Basic Information

Category: Cruising Sailboat

Model Year: 1979

Year Built: 1979

Country: United States

Dimensions

LOA: 32' 0" (9.75m)

LWL: 25' 0" (7.62m)

Beam: 11' 0" (3.35m)

Speed, Capacities and Weight

Displacement: 10500 Pounds

Water Capacity: 60 Gallons

Holding Tank: 14 Gallons

Fuel Capacity: 32 Gallons

Accommodations

Total Cabins: 1

Total Berths: 5

Total Heads: 1

Hull and Deck Information

Hull Material: Fiberglass

Hull Finish: Stainless Steel

Engine Information

Engines: 1

Manufacturer: Beta

Model: B20

Engine Type: Inboard

Fuel Type: Diesel

DETAILED INFORMATION

Features

Walk Thru and Accommodations Cruise Ready, Totally Rebuilt and Refurbished Inside and Out. Newer Engine, Turn Key only 400 Hours! Boat is cruised and lived onboard and in great shape. At some point in a few months she may be moved to storage on the hard. She has a new engine. trans, coupling, shaft and prop, gauge panel and wiring harness, muffler and hoses. At the moment less than 400 hours. Consumption is between 1/4 and 1/3 gal per hour at 5 to 6 knots. 32 gallon orig fuel tank. The boat is on the market because of age and a change of interests. Seller is 72 and have had several surgeries lately and 1 heart attack. USCG inspections are up to date. Over a 4 year period, we stripped her to bare glass inside and out. The interior is varnished mahogany. Rotted wood was fixed and replaced. Cabin sole is teak and holly. It currently looks exceptional. **Sails :**

- jib/genoa roller furling. Clean in good condition. I use it quite a bit.
- Main: may be original. Has islander logo imprinted.
- Mainsail cover is new within a 4 year period.

Anchors:

- a 35 lb cqr on the bow
- A small, aluminum Danforth for a stern anchor with an ss mount on the stern.
- 35 lb navy anchor

Hull:

- We stripped the bottom, 2 coats of barrier coat and as to date 3 coats of sea hawk bottom paint. There are no blisters and the bottom paint still reported as good.
- The hull was stripped, 2 coats of hand sanded primer and 2 coats of white easyposy rolled and tipped. New lettering, boot stripe trim.

Topside:

- toe rails removed and 94 thru bolts and sealant replaced on each side.
- All stanchions and railings removed, rebbeded and new ss thru bolts. There are no current leaks the Topside is dry and very solid.
- New main halyard and boom sheet lines.
- Added ss dinghy davits and rigging.
- Added stanchion to davits for proposed wind generator.
- Added mounting teak boards for proposed solar panels.
- New interlux deck paint.
- New deck non skid paint.
- Added new ritchie compass
- New ray marine 7" chart plotter/depth sounder dragonfly pro 7.

- Used ray marine 4000 autopilot.

Electrical:

- added led to running lights and mast light.
- 800.00 ss battery charger can serve 3 separate battery banks
- All new lead acid marine batteries nov. 2018
- All new led interior lights
- New wiring for 30 amp shore power
- New and extended 12 v interior wiring and usb charging in several locations.

Standing rigging: new ss wire installed 6 years ago. Excellent condition. Several new breakers.

Accessories:

- Arb 12/110 chest fridge
- 110 v window ac
- 110 v portable heater
- Propane heater
- Toaster
- Crock pot
- Various dishes, cutlery, pots/pans
- Small shop vac
- Ss propane grill on aft rail
- Sunbrella custom halyard supported sun cover

Dinghy.: 8' dinghy oars and 3.4 hp Nissan outboard (not running) **Plumbing:**

- 2- 30 gal ss fresh water tanks and hoses
- New 14 gal black water tank and hoses.
- New br sink faucet, drain, hose, thru hull.
- New toilet pump and hoses and thru hull.
- New galley drain hose
- 12v elec fw pump.
- Foot pump for galley fw
- New ss screened vents for ALL tanks.
- 2- 12v bilge pumps + 2 spares and new hoses.
- 1 manual bilge pump.
- Bilge high water alarm.
- 2 offshore lifevests.

Interior: old velvet cushions removed and all cushions recovered with canvas. **Headliners removed. 1" insulation added and and new naughaide throughout.**

- Insulation added throughout behind cabinets.
- 4 new large windows originals added @ 200.00 each.
- All portlights removed and rebeded. NO LEAKS!!

- Main salon hatch and solar fan replaced. Screen added.
- Main hatch roll up screen and insulated weather cover added.
- Screen added to fwd hatch over v berth.

- Keel Stepped Mast
- AC/DC ARB Refrigerator / Freezer
- Portable Air Conditioning Unit

Exclusions

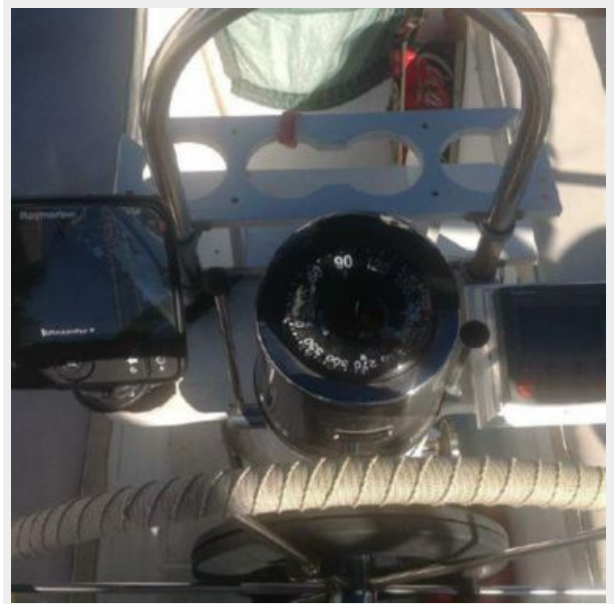
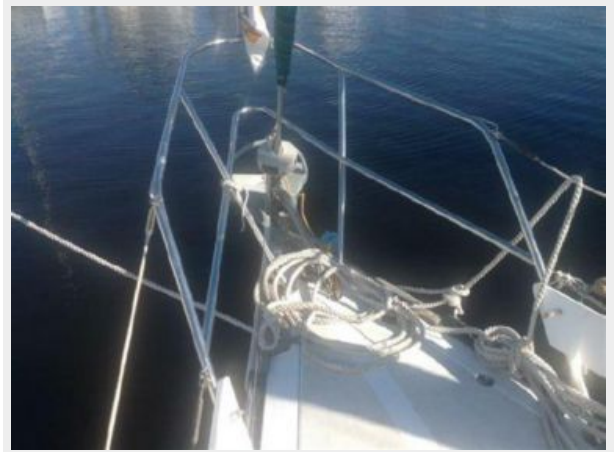
Owner's personal belongings.

Disclaimer

The Company offers the details of this vessel or yacht in good faith but cannot guarantee or warrant the accuracy of this information nor warrant the condition of the vessel. A buyer should instruct his representatives, agents, or his surveyors, to investigate such details as the buyer desires validated. This vessel or yacht is offered subject to prior sale, price change, or withdrawal without notice.

PHOTOS

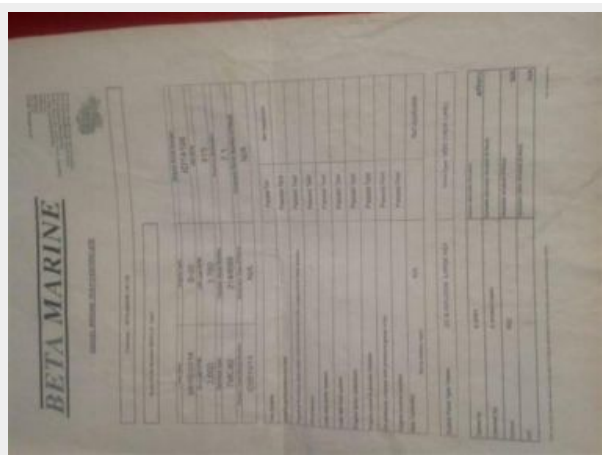
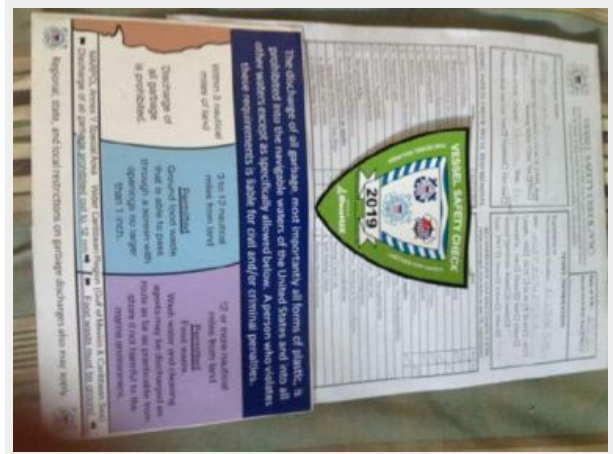
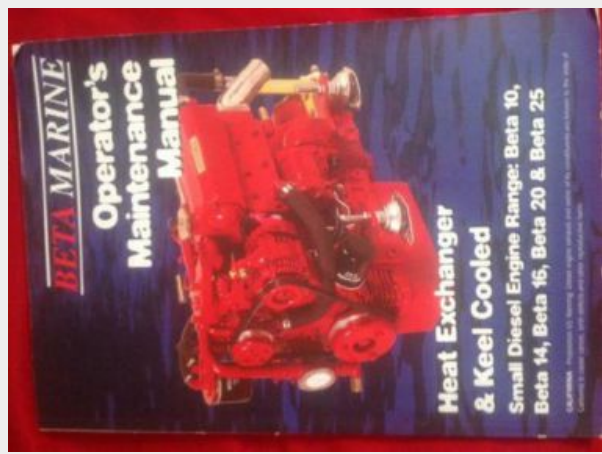


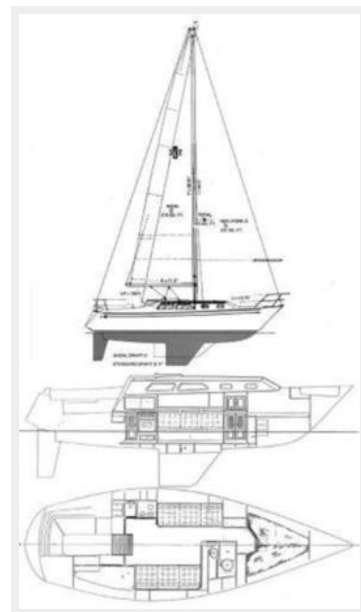












CONTACTS

Andrey Shestakov, leading yacht broker of the sales department of Shestakov Yacht Sales Inc. Shestakov Yacht Sales Inc., the official representative of the Miami/Fort Lauderdale FL headquarters.

Contact details

Email: andrey@shestakovyachtsales.com

Web: shestakovyachtsales.com/en/

Telephones

USA: +1(954)274-4435

Office hours

Monday – Saturday: **9:00 - 21:00** EDT

Sunday: **closed**

Address



Harbour Towne Marina, 850 NE 3rd St,
STE 213, Dania, FL 33004