

MANDALAY — ISLAND PACKET YACHTS



Builder: ISLAND PACKET YACHTS

LOA: 44' 0" (13.41m)

Year Built: 1994

Model: Cruising Ketch

Price: PRICE ON APPLICATION

Location: United States

Our experienced yacht broker, Andrey Shestakov, will help you choose and buy a yacht that best suits your needs **Mandalay — ISLAND PACKET YACHTS** from our catalogue. Presently, at Shestakov Yacht Sales Inc., we have a wide variety of yachts available on our sale's list. We also work in close contact with all the big yacht manufacturers from all over the world.

If you would like to buy a yacht **Mandalay — ISLAND PACKET YACHTS** or would like help answering any questions concerning purchasing, selling or chartering a yacht, please call **+1(954)274-4435**

TABLE OF CONTENTS

TABLE OF CONTENTS	2
SPECIFICATIONS	3
Overview	3
Basic Information	3
Dimensions	3
Accommodations	3
Hull and Deck Information	4
Engine Information	4
DETAILED INFORMATION	5
Accommodations & Layout	5
Galley	5
Sails & Rigging	5
Electronics/Navigation Equipment	6
Mechanical	6
Electrical	7
Deck & Hull	7
Disclaimer	8
Exclusions	8
Disclaimer	8
PHOTOS	9
CONTACTS	16
Contact details	16
Telephones	16
Office hours	16
Address	16

SPECIFICATIONS

Overview

- Extensive refit in 2016! Self sufficient Caribbean Cruiser!
- NEW ARRIVAL FORT PIERCE, FL
- 75 hp Yanmar Repower (2016), 500 hours
- Northern Lights Genset (2016), 190 hours
- Raymarine E23 Chartplotter and GHD Color Radar (2016)
- Standing Rigging replaced (2016)
- Fuel tanks replaced (2015)
- Electric winch in cockpit (2016)
- Custom SS Arch and Dingy Davits(2016)
- Wind generator, Solar panels (2016)
- Custom teak swim platform (2016)
- New interior Upholstery (2016)
- Plastismo 6 man Liferaft (2016)
- Rochna anchor and 300' chain (2016)
- AGM Lifeline batteries (2018)
- New salon air conditioning (2019)
- New Raymarine Autopilot Computer (2019)
- Spacious 2 cabin, 2 head layout!

Basic Information

Category: Cruising Ketch

Sub Category: Cruising Sailboat

Model Year: 1994

Year Built: 1994

Country: United States

Dimensions

LOA: 44' 0" (13.41m)

Accommodations

Total Cabins: 2

Total Heads: 2

Hull and Deck Information

Hull Material: Fiberglass

Engine Information

Engines: 1

Manufacturer: Yanmar

Model: 4JH4-TE

Engine Type: Inboard

Fuel Type: Diesel

DETAILED INFORMATION

Accommodations & Layout

- Warm teak cabinetry and joinery throughout
- Teak and holly laminate sole
- New cream Pleather upholstery throughout (2016)
- L shaped Salon settee starboard with cocktail table
- Fold down Dinette table is bulkhead mounted with a bookcase behind it
- 2 comfortable side chairs to port with center cocktail table
- Louvered cabinet doors outboard
- Dedicated navigation desk and electric panel between galley and salon with padded seat and backrest
- Brass clock and barometer
- Sleep in air conditioned comfort
- 2 large double staterooms, each with head and shower
- Offset double berth forward, hanging locker, bank of drawers, vanity w/mirror
- Aft Private head with SS sink, shower stall and tub, manual toilet
- Aft cabin double berth with filler and upholstered side seat, hanging locker, drawers, shelves
- Midship head has ensuite access
- Great ventilation and natural light
- SS Opening ports
- Opening hatches
- 12V fans
- Generous storage and provisioning room throughout

Galley

- 4 burner stove/oven (2015) with SS safety bar
- Top loading refrigerator
- Top loading deep freezer (2017)
- Double SS sink
- Sprayer
- Microwave Oven (2018)
- Spice rack
- Cabinets and dish storage

Sails & Rigging

- New Standing rigging (2016)

- Fully battened Doyle Mainsail (2010)
- Stackpack and lazy jacks
- Harken batt cars
- Furling Genoa and Staysail (2010)
- Harken Roller furling units
- Cutter rigged
- Self tacking jib boom
- Spinnaker Pole, mounted on mast
- (1) Harken #46 Electric ST winch on cabin top (2016)
- (2) sets of line clutches
- (2) Lewmar #44 ST winches on cabin top
- (1) Lewmar #16 ST winch on cabin top
- (2) Lewmar #54 ST primary winches on coaming
- (2) Lewmar #16 ST winches on coaming
- (1) Lewmar winch on mast
- SS Safety pulpits around mast

Electronics/Navigation Equipment

- Raymarine E23 Chartplotter (2016)
- Digital Radar on gimbal (2016)
- New Raymarine Autopilot computer (2019)
- Ritchie Compass
- ICOM AIS Transceiver (2017)
- VHF Radio
- B&G Wind Speed and Direction, depth
- VCR DVD Player
- Stereo / CD Player
- Cockpit Speakers

Mechanical

- REPOWER 2016, 75 hp Yanmar 4JH4-TE, 550 hours
- Fuel tanks replaced, 115 gal in 2 tanks (2015)
- Racor filter
- New Dometic 16K btu Reverse cycle air conditioning (2019)
- Marine Air 16K btu Reverse cycle air conditioning
- (2) Marine heads (2017)
- Hot water heater (2014)
- Electric bilge pump
- Manual bilge pump

Electrical

- Northern Lights 6kw diesel generator (2016), 190 hours
- Wind Generator D400 (2016)
- (3) Solar Panels 140 watt each (2016)
- (2) AGM Lifeline Group 8 Batteries (2018)
- (1) Engine start battery (2019)
- (1) Generator start battery
- Battery Charger/Inverter
- Shore power inlet
- Shore power cords

Deck & Hull

- Freshly waxed hull
- Rochna anchor and 300' 3/8" chain (2016)
- Electric windlass with foot and helm controls
- SS Double anchor rollers
- SS bow rails with bow pulpit seat
- SS Stanchions and double lifelines with side gates
- Plastimo 6 man Liferaft (2016)
- Custom teak swim platform (2015)
- SS swim ladder
- Cockpit shower
- Padded Helm seat
- Long bench seating in cockpit
- (2) Lazerettes
- Cockpit Cushions (2017)
- Dodger and Bimini on SS frame, Cockpit side curtains (2016)
- Custom SS solar arch (2016)
- Dingy Davits (2016)
- Bifold Teak/lexan companionway doors on half barrel hinges
- Teak cockpit table
- 10' AB RIB dingy (2014)
- 9.8hp Tohatsu Outboard engine (2014)
- SS cleats, bow, stern and midship
- (2) Dorade vents
- Opening hatches
- SS Opening ports
- Lifesling
- Flares
- Fire extinguishers

Disclaimer

The Company offers the details of this vessel in good faith but cannot guarantee or warrant the accuracy of this information nor warrant the condition of the vessel. A buyer should instruct his agents, or his surveyors, to investigate such details as the buyer desires validated. This vessel is offered subject to prior sale, price change, or withdrawal without notice

Exclusions

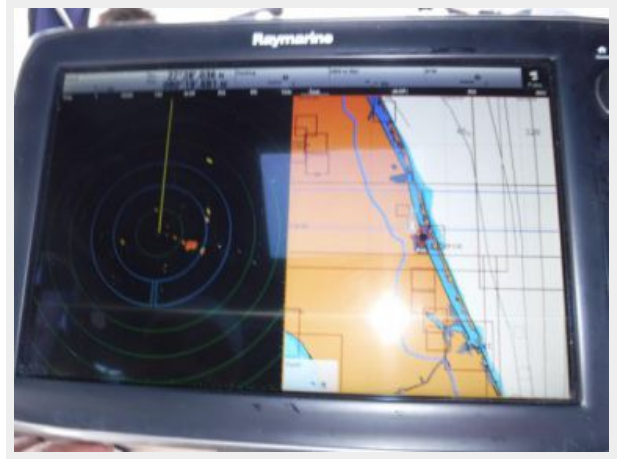
Owner's personal belongings.

Disclaimer

The Company offers the details of this vessel or yacht in good faith but cannot guarantee or warrant the accuracy of this information nor warrant the condition of the vessel. A buyer should instruct his representatives, agents, or his surveyors, to investigate such details as the buyer desires validated. This vessel or yacht is offered subject to prior sale, price change, or withdrawal without notice.

PHOTOS















CONTACTS

Andrey Shestakov, leading yacht broker of the sales department of Shestakov Yacht Sales Inc. Shestakov Yacht Sales Inc., the official representative of the Miami/Fort Lauderdale FL headquarters.

Contact details

Email: andrey@shestakovyachtsales.com

Web: shestakovyachtsales.com/en/

Telephones

USA: +1(954)274-4435

Office hours

Monday – Saturday: **9:00 - 21:00** EDT

Sunday: **closed**

Address



Harbour Towne Marina, 850 NE 3rd St,
STE 213, Dania, FL 33004