

PAWSITIVE — LAGOON



Судостроитель: LAGOON

Год постройки: 2000

Модель: Катамаран

Цена: **ЦЕНА ЯХТЫ ПО ЗАПРОСУ**

Местонахождение: United States

Длина общая: 38' 0" (11.58m)

Ширина: 21' 5" (6.53m)

Мин. осадка: 3' 9" (1.14m)

Макс. осадка: 3' 9" (1.14m)

Купить **Pawsitive — LAGOON** а также выбрать подходящую вам яхту из нашего каталога яхт вам поможет опытный яхтенный брокер Андрей Шестаков. На сегодняшний день компания **Shestakov Yacht Sales Inc.** имеет большое количество яхт в собственном списке продаж, а также тесно сотрудничает со всеми крупными яхтенными производителями по всему миру.

Для того чтобы купить яхту **Pawsitive — LAGOON** а также проконсультироваться по любому вопросу связанному с покупкой, продажей, чартером яхт позвоните по телефону **+7(918)465-66-44**.

ОГЛАВЛЕНИЕ

ОГЛАВЛЕНИЕ	2
ХАРАКТЕРИСТИКИ	4
Обзор	4
Основная информация	4
Размеры	4
Скорость, вместимость и масса	5
Размещение	5
Корпус и палуба	5
Информация о двигателе	5
ПОДРОБНОЕ ОПИСАНИЕ	6
Main Description	6
LAYOUT	6
Electrical	6
STANDING RIGGING	7
RUNNNG RIGGING	7
Galley	8
Recent Upgrades	8
Accomodations	8
Mechanical	9
Deck	9
ELECTRONICS	10
DISCLAIMER	10
Исключения	10
Отказ от ответственности	10
ФОТОГРАФИИ	11
КОНТАКТЫ	26
Контактная информация	26
Телефоны	26

Время работы	26
Адрес	26

ХАРАКТЕРИСТИКИ

Обзор

Lots of new upgrades!! New Electronics!! Pawsitive has the original 3 cabin layout, with huge interior volume for a 38 footer. Lots of room in this Owner's Version Lagoon 380. In GREAT CONDITION, EXTREMELY CLEAN and well equipped. NEVER CHARTERED! The Lagoon 380 is a lightweight cruising cat which has been the darling of the cruising world. Over 800 of this popular model are sailing worldwide. The simple yet efficient layout allows easy movement about the boat, both inside and out. Some key features include the rigid 'walkway' between the trampolines is not only a structural advantage for attachment of the trampolines, it takes the anchor chain forward so that the anchor is deployed from the bow. The vertical windows allow light into the salon, and maximize head space. The salon/nav station & galley are well appointed allowing visibility from the interior and easy access to the cockpit. Two HUGE storage lockers, accessed through hatches in the foredeck, allow plentiful storage in the bow, creating balance. Pawsitive has a custom arch and bimini on the stern & cockpit. A 'hanging' seat has been constructed between the uprights. This provides a shady, well ventilated seating area with excellent visibility over the coach roof. This is a wonderful addition, as the cockpit is where cruisers spend the majority of their time!

Основная информация

Тип судна: Катамаран

Подкатегория: Катамаран

Модельный год: 2000

Год постройки: 2000

Страна: United States

Размеры

Длина общая: 38' 0" (11.58m)

Длина по ватерлинии: 36' 1" (11.00m)

Ширина: 21' 5" (6.53m)

Мин. осадка: 3' 9" (1.14m)

Макс. осадка: 3' 9" (1.14m)

Трапы: 56' 10" (17.32m)

Скорость, вместимость и масса

Водоизмещение: 16000 Pounds

Вместимость воды: 146 Gallons

Вместимость сточного бака: 60 Gallons

Объем топливного бака: 110 Gallons

Размещение

Всего кают: 3

Всего ком. состава: 2

Корпус и палуба

Материал корпуса: Fiberglass

Информация о двигателе

Двигатели: 2

Производитель: Yanmar

Модель: 3GM30FG

Тип двигателя: Inboard

Тип топлива: Diesel

ПОДРОБНОЕ ОПИСАНИЕ

Main Description

Lots of new upgrades!! New Electronics!! Pawsitive has the original 3 cabin layout, with huge interior volume for a 38 footer. Lots of room in this Owner's Version Lagoon 380. In GREAT CONDITION, EXTREMELY CLEAN and well equipped. NEVER CHARTERED! The Lagoon 380 is a lightweight cruising cat which has been the darling of the cruising world. Over 800 of this popular model are sailing worldwide. The simple yet efficient layout allows easy movement about the boat, both inside and out. Some key features include the rigid 'walkway' between the trampolines is not only a structural advantage for attachment of the trampolines, it takes the anchor chain forward so that the anchor is deployed from the bow. The vertical windows allow light into the salon, and maximize head space. The salon/nav station & galley are well appointed allowing visibility from the interior and easy access to the cockpit. Two HUGE storage lockers, accessed through hatches in the foredeck, allow plentiful storage in the bow, creating balance. Pawsitive has a custom arch and bimini on the stern & cockpit. A 'hanging' seat has been constructed between the uprights. This provides a shady, well ventilated seating area with excellent visibility over the coach roof. This is a wonderful addition, as the cockpit is where cruisers spend the majority of their time!

LAYOUT

- Fractional sloop rigged aft
- Cockpit with wrap around seating
- Port single helm
- Amidships salon
- Twin queen staterooms
- Owners edition, with joining heads with stall showers, hanging lockers,
- Navigation area
- Companionway work area
- Teak bulkheads and cabinets
- Teak & holly paneled flooring
- Convertible dinette, with wrap around seating
- Fully equipped galley, stbd. amidship
- Stern engine spaces
- Scoop aft transoms with boarding ladder
- Custom radar arch over aft cockpit w/ bimini overhead cover
- Webbed netting between bows.

Electrical

- 12V/110V system

- 2 x Shorepower outlets
- 3 x 50' Shorepower cables
- New Blue Sea AC/DC electrical panel (07/16)
- 2 x AGM Dual Marine Gr27 Start Batteries (07/16)
- 3 x AGM LifeLine 4D House batteries (06/16)
- Balmar 90A Alternator w/ Smart Charger
- Promariner Battery isolator system (06/16)
- Freedom SW inverter/charger (2012)
- 2 x 500 W Solar Panels w/ Blue Sky regulator
- KISS Wind generator
- Webasto Reverse Cycle Aircon/heat, 16000 BTU (2015/2016)
- Spectra 150 Watermaker (rebuilt 2009 & not used since)
- 12V Fans in salon and cabins.
- Seaward water heater (6 Gal) (Oct '16)
- 2 x Galvanic isolators

STANDING RIGGING

- Extruded z diffusion aluminum mast, w/ internal halyards
- D diffusion aluminum boom with integrated adjustments
- Sweepback single spreader
- Deck compression using deck step, with block/hardware/attachments
- Pro-furler, nc-42 integrated roller furler headsail furling system for genoa, block & tackle down & outhaul hardware

RUNNING RIGGING

- Mast situated at forward end of Coachroof
- Fully battened mainsail (2005)
- Lazy bag and lazy jacks (2009)
- 120% Genoa (2005)
- Halyards & sheet lines: dacron braided color coded. all leads run to cockpit using deck mounted cheek block through spinlocks,
- Harken winches: cockpit winches: 2 ea. # 40 w/s-tail 2 spd. as primary, 1 ea. Lewmar # 9 aft cockpit for trim
- Mast mounted: 2 ea. harken, # 32 w/s-tail, 2 spd, various tie-off cleats, g, harken,
- 5:1 main sheet traveler mounted on arch,
- Main full batten batt car slug tracked
- Pro-furler on genoa
- New Mack Pack (2018)

Galley

- Force 10 3-burner Propane stove w/ oven (2007)
- Double S/S fridge
- Frigoboat front-opening fridge
- Ice Box
- Pressurized hot and cold water
- Storage cabinets and drawer.
- Magma gas bar-b-que grill on transom

Recent Upgrades

- All new curtains and cabin upholstery 2016
- All Lewmar hatches replaced 2017
- New Standard horizon Gx2200 with remote mic 2017
- New Raymarine sailing instruments 2017
- New Raymarine radar 2017
- New Raymarine autopilot with remote 2017
- New Mack pack 2018
- New bimini top and isinglass 2018
- Installed new Jabsco electric heads and all new waste plumbing 2018
- Converted all heads to freshwater 2018
- Installed additional 66 gal water tank 2018
- Installed new Fusion stereo and speakers 2018
- New Lewmar P1000 windlass, chain and rode 2019

Accomodations

The interior is accessed through a sliding door from the cockpit. The salon is light and has all-round visibility through the signature Lagoon vertical windows. The dinette is straight ahead with curved seating facing aft, a dining table and bench seat between table and door, To port is the Nav station with instruments at desk height, and electric panels overhead. The navigator has a comfortable stool to sit on. Forward of the nav station are the stairs to the guest hull. To starboard is the galley, which has sinks, oven and work surface facing aft, into the cockpit. The fridge forward, next to the dinette, with a large surface in the corner where the current owners have a TV. Stairs to the owner's hull are between the storage area and the fridge. The stairs lead directly to the 'study', which has a stool, desk and shelves. The master cabin is aft, with storage on both sides of the doorway and under the queen-sized bunk. Forward of the 'study' there is storage on either side of the hull before entering the head, The head has 2 sections, the head and basin closest to the passage and a separate shower stall through a perspex door. The Guest cabin has a double cabin fore and aft, with plentiful storage in each, and a guest head situated in the passageway between the two.

Mechanical

- 2 x Yanmar 3GM30F
- 3061 hours
- YanmarSD20 Sail Drives
- 2-blade propellers
- Racor fuel filters
- Vacuum oil change system
- Fresh water pump (new 2014)
- Jabsco electric heads and all new waste plumbing (2018)
- Converted all heads to freshwater 2018

Deck

- Perch seats on bow rail
- Bowsprit
- Bow roller on forward cross beam
- 44lb Rocna Anchor w/ 150' chain and 150' rode (new 2016)
- 45lb Delta anchor w/ 25' chain and 150' rode (stored in anchor locker)
- Fibreglass walkway/chain guide between trampolines
- 2 x Trampoline
- 2 x forward storage compartments accessed through deck hatches in each hull
- Anchor washdown (salt water)
- Anchor locker behind stbd trampoline houses:
- New Lewmar P1000 windlass, chain and rode (2019)
- Spare anchor.
- Storage locker behind port trampoline.
- Wide side decks with lifelines & gates
- Helm - port cockpit
- Double helm seat with foot rest
- Nav/engine instruments on bulkhead/coachroof
- Cockpit Cushions
- Wooden cockpit table
- Full Sunshades for Cockpit
- Ice Box forms forward, stbd seat
- Custom Arch (2008) w/
- Mount for Solar panels
- Wind generator pole
- Radar Pole
- Custom Bimini with storage space (2008)
- Custom Settee between arch uprights (2008)
- Fresh water deck shower on port steps
- Swim ladder on port sugar scoop

- Access to engine compartments through hatches on top steps of each hull
- Davits on transom
- New bimini top and isinglass (2018)
- All new Lewmar hatches replaced in 2017

ELECTRONICS

- New Standard horizon Gx2200 with remote mic 2017
- New Raymarine sailing instruments 2017
- New Raymarine radar 2017
- New Raymarine autopilot with remote 2017
- New Fusion stereo and speakers 2018
- Vizio TV in salon
- Sharp TV - bulkhead mounted in owner's cabin

DISCLAIMER

The Company offers the details of this vessel in good faith but cannot guarantee or warrant the accuracy of this information nor warrant the condition of the vessel. A buyer should instruct his agents, or his surveyors, to investigate such details as the buyer desires validated. This vessel is offered subject to prior sale, price change, or withdrawal without notice.

Исключения

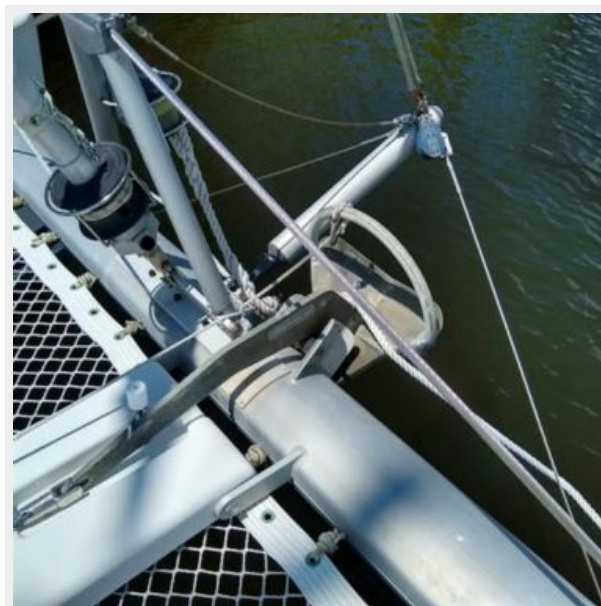
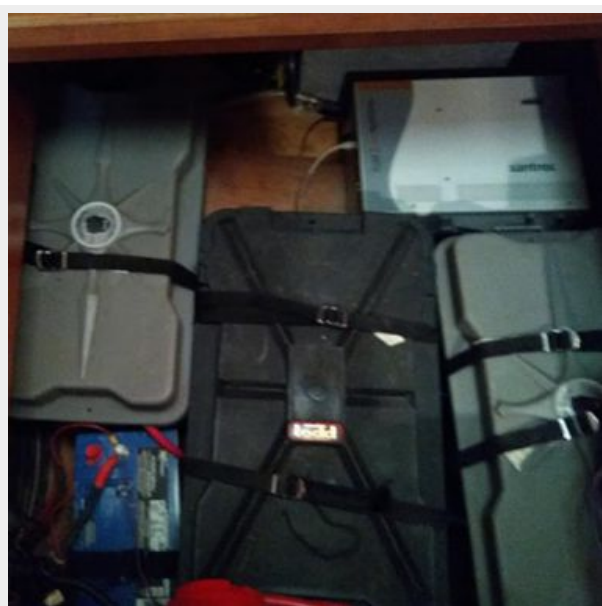
При продаже яхты исключаются личные вещи владельца.

Отказ от ответственности

Компания предоставляет описание судна или яхты добросовестно, но не может гарантировать точность этой информации, а также не ручается за техническое состояние. Покупатель должен проинструктировать своих агентов или оценщиков исследовать представленную информацию более подробно, по собственному желанию. Продажа судна или яхты, изменение цены или снятие с продажи будет происходить без предварительного уведомления.

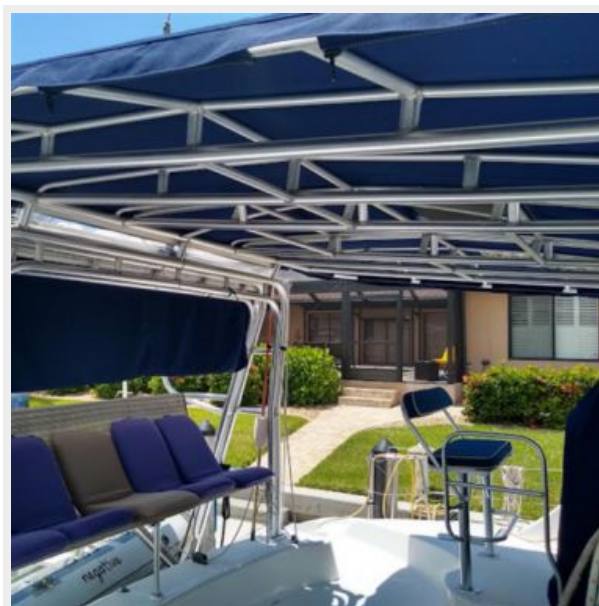
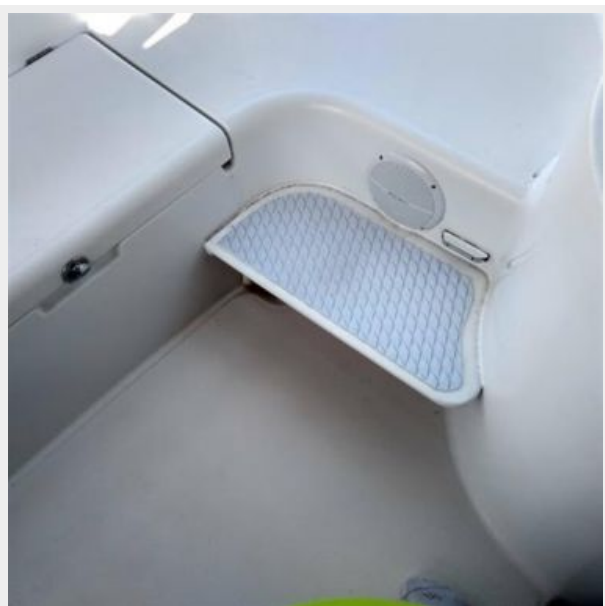
ФОТОГРАФИИ









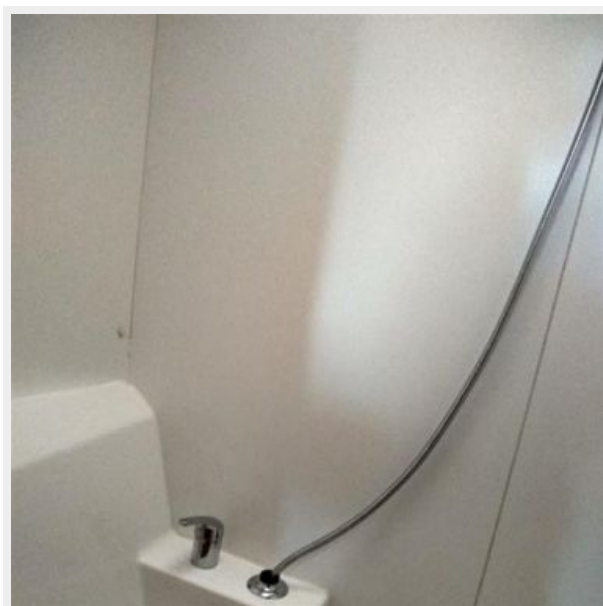
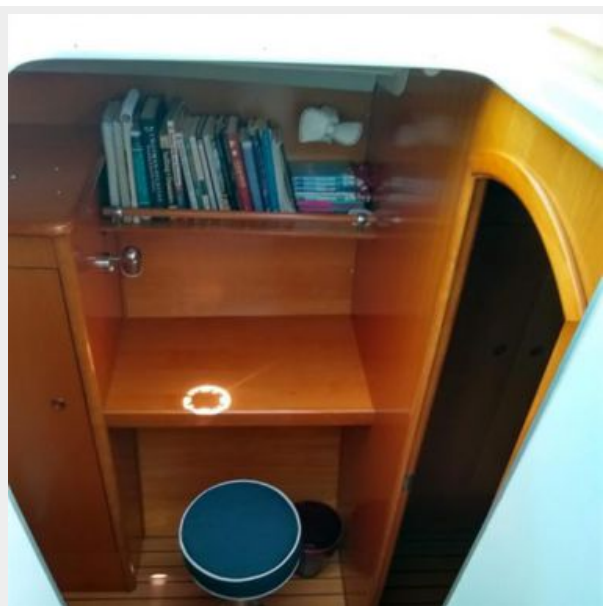
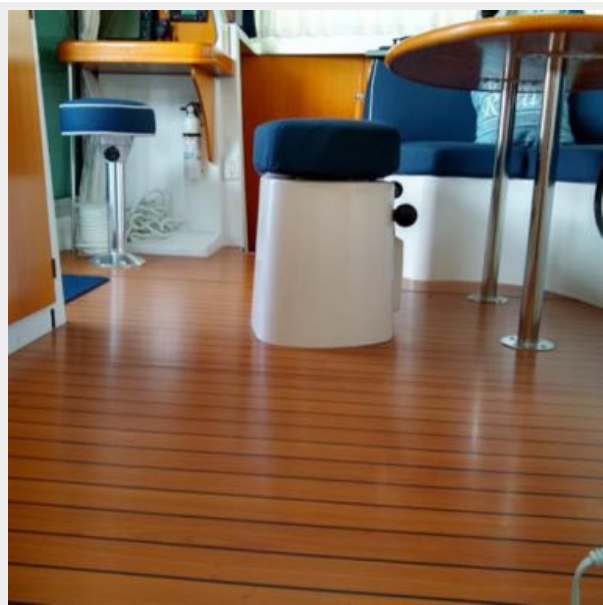


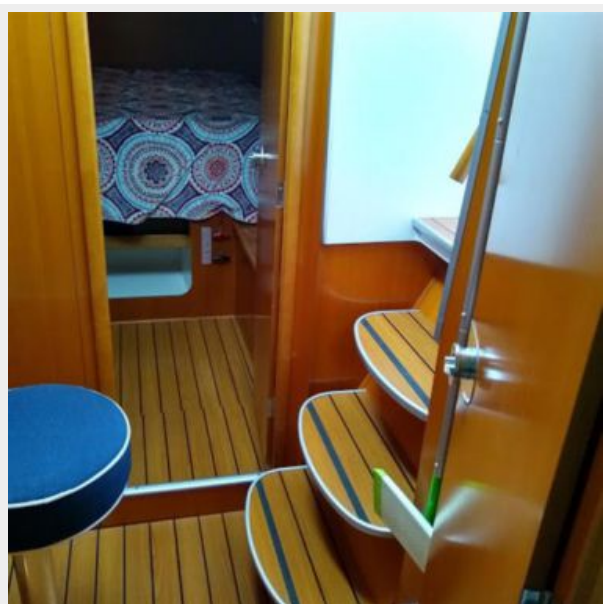




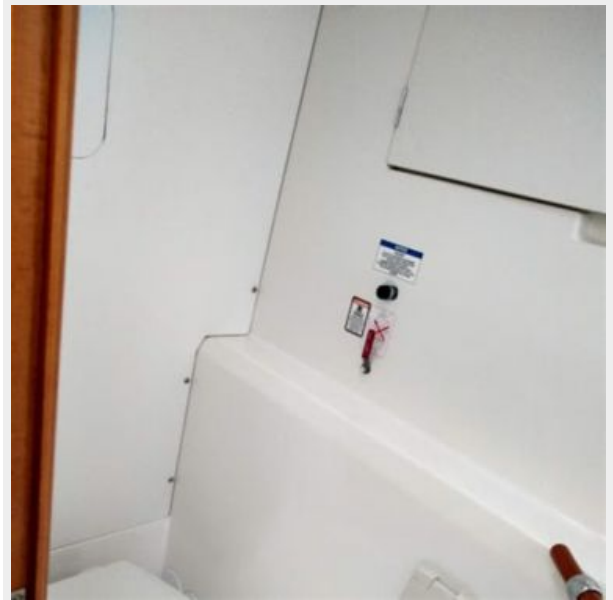


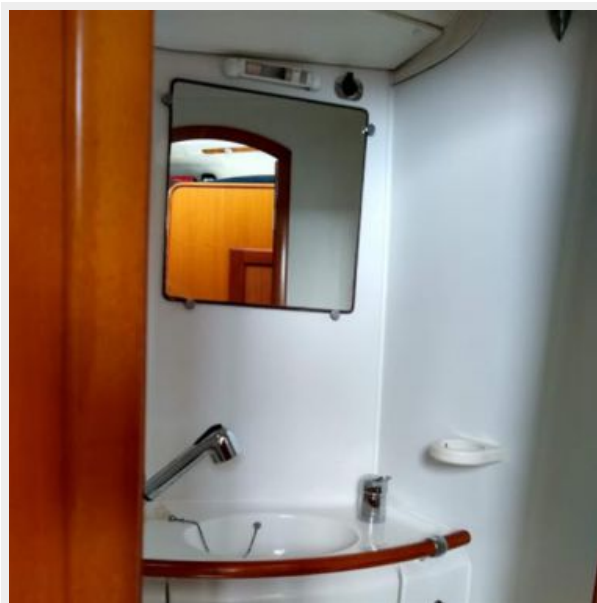
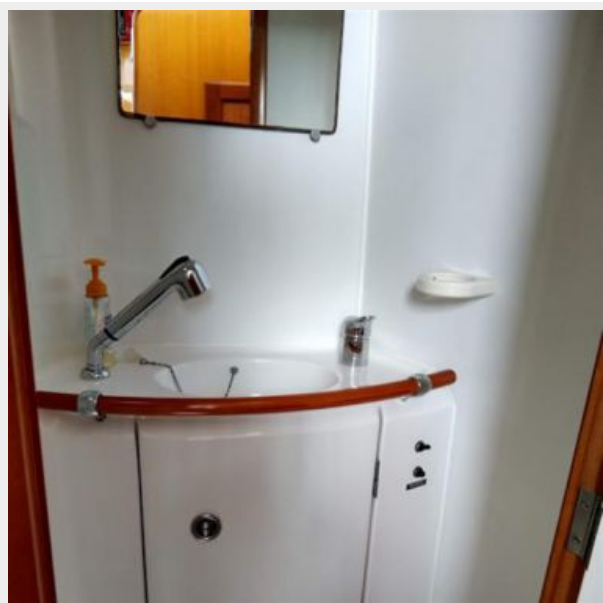














КОНТАКТЫ

Андрей Шестаков (Andrey Shestakov) – ведущий яхтенный брокер отдела продаж яхт и судов компании Shestakov Yacht Sales Inc. Официальный представитель Shestakov Yacht Sales Inc. для русскоговорящих клиентов в центральном офисе компании в Майами/Форт Лодердейл/Флорида/США.

Контактная информация

Email: andrey@shestakovyachtsales.com

Web: shestakovyachtsales.com

Телефоны

Краснодарский край: **+7(918)465-66-44**

США, Майами, Флорида: **+1(954)274-4435**

Время работы

Понедельник – Суббота: **9:00 - 21:00**
EDT

Воскресенье: **Закрыто**

Адрес



Harbour Towne Marina, 850 NE 3rd St,
STE 213, Dania, FL 33004