

TRAVIS MCGEE — PACIFIC MARINER



Судостроитель: PACIFIC MARINER

Год постройки: 1999

Модель: Моторная яхта

Цена: **ЦЕНА ЯХТЫ ПО ЗАПРОСУ**

Местонахождение: United States

Длина общая: 65' 0" (19.81m)

Ширина: 17' 3" (5.26m)

Макс. осадка: 5' 0" (1.52m)

Крейс. скорость: 20 Kts. (23 MPH)

Макс. скорость: 23 Kts. (26 MPH)

Купить **TRAVIS MCGEE — PACIFIC MARINER** а также выбрать подходящую вам яхту из нашего каталога яхт вам поможет опытный яхтенный брокер Андрей Шестаков. На сегодняшний день компания **Shestakov Yacht Sales Inc.** имеет большое количество яхт в собственном списке продаж, а также тесно сотрудничает со всеми крупными яхтенными производителями по всему миру.

Для того чтобы купить яхту **TRAVIS MCGEE — PACIFIC MARINER** а также проконсультироваться по любому вопросу связанному с покупкой, продажей, чартером яхт позвоните по телефону **+7(918)465-66-44**.

ОГЛАВЛЕНИЕ

ОГЛАВЛЕНИЕ	2
ХАРАКТЕРИСТИКИ	6
Основная информация	6
Размеры	6
Скорость, вместимость и масса	6
Размещение	6
Корпус и палуба	7
Информация о двигателе	7
ПОДРОБНОЕ ОПИСАНИЕ	8
Accommodations	8
Flybridge	8
Flybridge Electronics	8
Deck Equipment	8
Tender	9
Aft Deck	9
Swim Platform	10
Foredeck / Side Deck	10
Pilothouse	10
Pilothouse Electronics	11
Galley	11
Salon	12
Master Stateroom Midship	12
Master Head	13
VIP Stateroom	13
VIP Head	14
Port Guest Stateroom	14
Guest Head	14
Laundry Room / Crew Quarters Aft	14

Engine/Mechanical Equipment	15
Electrical System	16
Additional Maintenance and Upgrades	16
Remarks	16
Exclusions	17
Исключения	17
Отказ от ответственности	17
ФОТОГРАФИИ	18
Foredeck Sun Pad	18
Foredeck	18
Walk-around Side Deck	18
Flybridge Helm & Companion Seats	18
Upgraded Helm Console with Garmin Chart	18
Flybridge	18
Flybridge / Grill / Refrigerator	19
Flybridge Settee	19
Tender	19
Swim Platform / Aft Deck	19
Pilothouse Settee	19
Pilothouse Helm with Ugraded Garmin Chart Plotter	19
Galley	20
On Deck Galley	20
Galley / Upgraded Refrigerator & Microwave 2017	20
Main Salon Bar / Entertainment Center	20
Main Salon with Hi-Lo Cocktail / Dining Table	21
Main Salon	21
Main Salon	21
Main Salon	21
Generators Remote Start / Stop Controls	22

Ships Electric AC/DC Panel	22
Aft Deck Settee / Crew Access	22
Aft Deck	22
Aft Deck Ladder to Boat Deck / Flybridge	22
Custom Aft Deck Hinged Ladder	22
Aft Deck Control Station with Bow Thruster	23
Master Stateroom with King Berth	23
Master Stateroom	23
Master Stateroom	23
Master Head Custom Linen / Cloth Hamper Cabinet	24
Master Stateroom Head	24
Forward VIP Stateroom	24
Forward VIP Stateroom	24
Forward VIP Stateroom Head	25
Forward VIP Stateroom Head	25
Port Guest Twin Berth Stateroom	25
Twin Berth Stateroom Ensuite Head	25
Crew Storage Locker / Freezer / Fresh Water Head	26
Aft Crew / Laundry Center	26
Laundry Center	26
Crew Single Berth	26
Full Beam Stand Up Engine Room	27
Port Engine	27
Starboard Engine	27
Profile	27
Layout	27
Profile	27
КОНТАКТЫ	28
Контактная информация	28

Телефоны	28
Время работы	28
Адрес	28

ХАРАКТЕРИСТИКИ

Основная информация

Тип судна: Моторная яхта

Подкатегория: Pilothouse

Модельный год: 2000

Год постройки: 1999

Страна: United States

Верх: Bimini Top

Размеры

Длина общая: 65' 0" (19.81m)

Ширина: 17' 3" (5.26m)

Макс. осадка: 5' 0" (1.52m)

Скорость, вместимость и масса

Крейс. скорость: 20 Kts. (23 MPH)

Дальность на крейсерской скорости:
900

Макс. скорость: 23 Kts. (26 MPH)

Чистый вес: 33 Pounds

Вместимость воды: 285 Gallons

Вместимость сточного бака: 125 Gallons

Объем топливного бака: 1100 Gallons

Размещение

Всего кают: 3

Спальные места: 6

Всего ком. состава: 3

Каюты экипажа: 1

Койки экипажа: 2

Корпус и палуба

Материал корпуса: Fiberglass

Материал палубы: Teak

Комплектация корпуса: Modified V-Hull

Дизайнер корпуса: William Garden

Дизайнер экстерьера: Gregory Marshall

Дизайнер интерьера: Pacific Custom Interiors

Информация о двигателе

Двигатели: 2

Производитель: Caterpillar

Модель: 3406E

Тип двигателя: Inboard

Тип топлива: Diesel

ПОДРОБНОЕ ОПИСАНИЕ

Accommodations

"Travis McGee" comfortably sleeps six in owner's party with three staterooms all with en-suite heads. Additional aft crew quarters for two with head. She offers a great cruising speed with excellent sea keeping characteristics and exceptional close quarter maneuverability. Features a large all weather pilothouse with helm and companion seats, comfortable L shape settee with dining table and an up open galley with all the conveniences of home. Main salon is roomy with large windows and full glass aft bulkhead. Hi-Lo table provides dining for six. Updated soft goods, including carpet and loose furniture.

Flybridge

- Fiberglass radar arch with courtesy down lights and flood lights
- Bimini top with stainless steel frame and Black Sunbrella
- Tinted windshield
- 4" Danforth magnetic compass
- **Upgraded 2nd generation model helm console with cover**
- 24" stainless steel Destroyer wheel
- Electronic clutch and throttles with synchronizer and low idle/bow thruster control
- **Upgrade - Stidd Helm and companion seats with covers, armrest, footrest**
- **Seat and console covers**
- "L Seating" Built in with cushions, cover and storage below
- Force 10 electric grill with cabinet and upgraded refrigerator/ **New 2017**
- Four 12V deck courtesy lights
- Upgraded LED Lighting

Flybridge Electronics

- Icom IC-M502 VHF
- Com Nav autopilot with hand held remote
- Garmin GPS / 1040XS 10" screen / **New 3/2016**
- B & G network depth finder
- B & G network knot log
- ITT Jabsco searchlight
- JVD AM/FM KD-5640 stereo with CD player with two 7" speakers
- Com Nav rudder angle indicator

Deck Equipment

- 24" Life ring
- Davit Nautical Structure 1500lb. hydraulic with rotation and boom, cable, Hydraulic Ram / **New 2018**
- CV 6-man canister life raft with cover and chocks.
- Davit hydraulic pump / **Replaced 2/2016**

Tender

- 14' 2000 Novurania
- 50hp 4 stroke Honda w/ Dol-fin, 3 blade s.s. prop
- Bow rail
- Nav lights
- 12 Volt
- Fuel gauge
- Bilge pump
- Tachometer
- Trim Indicator
- Lift Bridle
- Fire Extinguisher
- (2) Rod Holders
- Steering – s/s wheel Teleflex steering
- Hummingbird 160 Depth Finder
- 13 gallon fuel capacity w/deck fill
- Center seat w/ built in fiberglass cooler w/ drain
- Storage cover matching black Sunbrella
- Cable style deck tie downs

Aft Deck

- 8'7" head room
- **Upgraded teak deck with recessed deck storage locker**
- **Custom Hinged seven step stainless ladder with teak steps access to flybridge/boat deck**
- Cockpit control station with start / stop/ low idle, bow thruster control and cover
- Electronic ZF clutch and throttles with cover
- Aft deck fiberglass overhang with courtesy upgraded overhead LED Lights
- Child gate at swim platform access / stainless steel with lexan panel
- Stern flush mounted flag staff holder
- Manual engine room Fireboy release
- Ships bell (7 3/4")
- Dockside water fitting
- Built-in seat with cushions and access to crew quarters / engine room / laundry

- **(1) collapsible Teak table Hi-Lo w/storage cover**
- Cablemasters Glendinning port and starboard 50 amp with 100' cords.
- Phone and cable TV inlet
- 15" Stainless grab rails port and starboard
- Aft bulkhead floor to ceiling sliding glass door with stainless steel frame
- Port and starboard 24V capstans with foot switches

Swim Platform

- 5'
- Large boarding platform with large storage locker and two access hatches, bilge pump with auto float switch
- Stainless steel three step retractable swim ladder
- (3) 6" Pop up stainless steel cleats
- Stainless steel handrail on transom
- Hot and cold fresh water shower
- **Upgrade - Euro-style polished stainless steel staple rails**

Foredeck / Side Deck

- Stainless steel bow rail with stainless steel 16" pennant staff
- Simpson Lowrance 24V windlass with Wildcat. 300' x 3/8" chain, 75lb. CQR anchor
- Fender locker with fresh and seawater wash downs
- Port and starboard fuel and water fills
- Foredeck sunpad with removable cushions
- Walk around side decks
- Marquipt (6) step sea stair with port and starboard pilothouse and aft deck mounts with high-gloss varnished hand rail
- Marquipt (4) step solid ladder

Pilothouse

- Pilothouse windshields 1/2" thick with three 39" windshield wipers with washers and black textaline windshield cover
- Port and starboard sliding pilothouse doors **upgraded with new style doors**
- Helm and companion seats with armrest and footrest / Stidd
- Stairway access to lower level accommodations with accent lighting and **upgraded teak handrail**
- Teak stairs to flybridge with carpet step pads
- "L" settee built in with cushions and storage below, high gloss Camphor table w/slide feature

- 35" Teak rim helm wheel (Edson)
- Electronic controls with synchronizer
- Backup Mathers manual controls
- Bow thruster control
- Windshield defog system
- (2) Chart drawers
- Chart light with red lens
- Hydraulic steering with power assist
- Naiad Model #254 stabilizers with 4.5 sq. foot fins
- Holding tank monitor
- Panasonic multi-task intercom/cell phone
- Upgraded LED Lighting

Pilothouse Electronics

- Danforth 6" magnetic compass
- Furuno 64 mile radar model 1942 **with 4' open array scanner**
- Northstar GPS 952X with chart
- Com Nav autopilot with hand held remote plug in
- Ritchie electronic compass
- Raymarine Windspeed and direction
- B & G Speed indicator
- B & G Depth finder
- Furuno Color Graph Depth Finder / FCV 582L Fish finder
- 12V DC Electronics breaker panel
- ICOM VHF IC-M127
- Jabsco Searchlight ITT
- KVH trac 4 satellite TV
- Kahlenberg dual trumpet air horns w/air compressor
- Dual 24V/12V converter / battery electronics supply
- GPS map/Garmin 8215 / 15" screen w/WiFi adapter / **New 3/2016**

Galley

- Fully equipped gourmet Galley
- 22 cubic feet stainless steel refrigerator with ice and chilled water dispenser / Whirlpool **New 2/ 2017**
- Stainless steel Thermador four burner cooktop with oven
- Built in stainless steel GE Profile convection microwave oven / **New 11/ 2017**
- Samsung stainless steel dishwasher DW80M9 / **New 5/ 2019**
- Kitchen Aid stainless steel trash compactor
- Corrian counter tops

- Double stainless steel sink with **garbage disposal (New Jun. 2011)**
- Grohe single lever faucet with pullout sprayer
- Overhead hatch opening with screen
- Galley cabinets and storage lockers
- Lazy Susan under corner cabinet
- Overhead Halogen lighting and accent lighting
- Luxury vinyl sole
- Satin finished teak cabinets
- Upgraded LED Lighting

Salon

- Custom "L" sofa with storage below redone with Ultra Leather **7/ 2018**
- **Upgrade - carpet throughout / New 7/2018**
- Custom high gloss Camphor wood Hi-Lo table with electric lift; slide feature converts for comfortable six person dining
- Polished stainless steel sliding door aft bulkhead with tinted glass, and privacy curtain
- Entertainment center in main salon
- 30" Mitsubishi plasma flat screen TV with remote control and DSS satellite receiver
- JVC VCR with stereo sound and Bose speaker system
- JVC AM/FM stereo receiver with Dolby surround sound
- JVC (5) disc CD changer, DVD/Video
- JVC Audio video control receiver
- Refrigerator with ice maker , polished stainless steel with hot and cold faucet located in wet bar
- Custom lighted glassware cabinet with six place glassware setting
- Main electrical panel located starboard aft, **upgraded teak cabinet frames**
- AC distribution breaker panel
- Xantrex 3.0 inverter with control panel with designated breaker panel
- Generator control panel with start / stop / and gauge package
- Large eye level windows with privacy shades
- Upgraded LED Lighting

Master Stateroom Midship

- Centerline King berth with drawers below and **custom upholstered headboard**
- Port and starboard nightstands with reading lamps and upgraded wall mount Sohji accent panels
- Mirrored bulkhead
- His and hers cedar-lined closets with shelves
- Custom desk with drawers and chair, phone and internet outlets and 15" computer monitor with sliding mirror

- Four opening port lights with **custom Sohji screens**
- 20" Sharp LCD flat screen color TV with remote control and D.S.S. receiver
- Denon DVED-910
- Remote B & G depth finder
- Built-in book shelves in desk
- Built-in electric wall heater 110V
- JVC AM/FM stereo with cassette player
- Digital room temperature control
- Digital Sentry built-in safe
- **Upgrade - matching teak dresser portside with halogen overhead lights on dimmers in lieu of settee**
- Upgraded overhead LED Lighting

Master Head

- Ensuite with stateroom
- Corian counter top with sink
- Grohe single lever faucet
- Jet head Headhunter fresh water marine toilet
- 5' tub and shower with sliding glass doors
- Mirrored vanity with storage
- Exhaust fan
- Upgraded LED Lighting
- Opening port light with privacy shade
- **Upgrade - teak and holly sole**
- **Upgrade - matching teak linen locker with cloth hamper**

VIP Stateroom

- Centerline queen berth with designer spread, drawers below and upholstered headboard
- Forward mirrored bulkhead with reading lamps
- Ventilation hatch opening with screen
- (2) Opening port lights with privacy shades
- Cedar-lined hanging locker
- AM/FM stereo with CD player and two speakers
- 13" Sharp LCD flat screen color TV with remote control and custom teak frame
- DVD player
- Built-in electric room heater 110V
- Digital room temperature control
- **Custom matching teak cabinet with drawer, portside**
- Upgraded overhead LED Lights with accent rope lighting

VIP Head

- Ensuite with stateroom
- Corian counter top with sink
- Stall shower with glass door
- Mirrored vanity with storage
- Exhaust fan
- Opening port light with privacy shade
- Headhunter fresh water marine toilet
- **Upgrade - teak and holly sole**
- Upgraded LED Lighting

Port Guest Stateroom

- Twin berths with designer spreads, reading lamps, drawers below
- Night stand with lamp
- Cedar-lined hanging locker
- JVC AM/FM stereo with CD player
- 13" Sharp LCD flat screen color TV with remote control and custom teak frame
- DVD player
- Digital room temperature control
- Upgraded LED Lighting with accent lighting

Guest Head

- Ensuite with twin berth stateroom; also has foyer access
- Corian counter top with sink
- Stall shower with glass door
- Mirrored vanity with storage
- Exhaust fan
- Head Hunter jet type fresh water marine toilet
- **Upgrade - air conditioning duct installed**
- **Upgrade - teak and holly sole**
- **Upgraded LED Lighting**

Laundry Room / Crew Quarters Aft

- Stacked Whirlpool washer and dryer
- Storage area with shelves and lockers
- Stainless steel sink with hot and cold water
- Air conditioner with digital room temperature control panel

- Norcold Tek II 2.1 cubic foot freezer
- Marine fresh water head with holding tank and overboard discharge
- Pump and dockside pump out deck fitting
- Electric room heater
- (2) berths with reading lamps - Note: One mattress
- Opening port light starboard side
- Intercom
- Spare parts storage cabinet with sliding doors
- Access to engine room through freeman watertight door

Engine/Mechanical Equipment

- 5'7" Headroom
- **T/3406 E Caterpillar engines** / 800 hp with airsep's / dual Racor 1000 fuel filters with vacuum gauge **with 1630 hours**
- Transmission twin disc MG5114A 1:92.1 ratio
- 2 1/2" shafts with dripless seals
- Auto oil change system, main engines, two generators 24v
- Fireboy FE 241 Auto / Manual fire system-**Next Certification June 2020**
- Fuel tanks aluminum painted with Imron with sight gauges and electric fuel gauges at helm
- Naiad model #254 stabilizer system with 4.5 Sq. foot fins
- Air conditioning system Aqua air chilled water system - 60,000 BTU with three phase soft start on chiller. **New 5/2019**
- Stabilizer pump off port main engine
- Nibral (5) blade props 32" x 33"
- 30 gallon quick recovery water heater 120V -**New 10/2017**
- HeadHunter fresh water head pump. New pressure accumulator tank **12/2018**
- Fiberglass holding tank with overboard discharge macerator pump and dockside pump out deck fitting
- 28hp Naiad hydraulic bow thruster with power take off, 20kw 1800 rpm generator
- Port and Starboard air intakes with Delta T Demsitters and 24V intake blowers
- Sea Recovery 800GPD water maker with fresh water flush. New low pressure pump **3/2019**
- Fresh water faucet with hot and cold water
- **Upgrade - HeadHunter 24V fresh water circulating pump, New 3/2019**
- 110V GFI outlet
- Overhead 24V fluorescent lights
- Craftsman four drawer tool box
- Bilge pumps: nine auto/manual with float switches
- Upgrade rudder logs to dripless seals
- ESI 24V fuel polishing system with Racor water separator filter
- **Upgrade - High water bilge alarm**
- Hydraulic steering with power assist on starboard engine
- 316 L / 125 gal. freshwater tank stainless steel with port and starboard deck fills

Electrical System

- 12V/24V/110V/240V
- **Northern Lights 20kw generator** with sound shield - **1740 hours**
- Racor #500 fuel filter, 1800 rpm power take off for bow thruster, oil change system, 12V battery in battery box
- **Northern Lights 12kw generator** with sound shield - **695 hours**
- Racor #500 fuel filter 1800 rpm, 12V battery with box
- 12V D.D. breaker control panel engine room
- Battery charger / C-charger 24V / 40 amp
- Battery charger / C-charger 12V / 20 amp
- Battery on / off switches mains and generators
- (2) 8D Powertron 1300 cca / wet cell batteries with boxes / **New May 2018**
- (2) 50 amp x 100' shore cords on Glendinning cblemasters
- (1) 30 amp x 50' shore cord with 30 amp inlet
- Prosine 3000 watt inverter with charger and designated breaker panel
- Port and starboard isolation transformers 50 amp with boost on port shore cord
- Battery paralleling switch
- Bonding system

Additional Maintenance and Upgrades

- Refurbish Headhunter Head Manifolds **4/2019** • New Stainmaster carpet throughout **7/2018** • Upgrade soft goods in staterooms **6/2018** • Replace shower sump and float switch **8/2018** • Replace A/C condensation pump float switch **8/2018** • Replace forward Rule automatic bilge pump **8/2018** • Replace sea water intake hoses from sea strainer to raw water pumps main engines and generators **6/2019** • Clean and refurbish sea strainers, main engines and generators **6/2019** • Clean cooling system main engines heat exchanges, steering cooler, after coolers, gear coolers **3/2017** • Upgrade Mars Ion air purifiers Galley and Master Stateroom air handlers **10/2018** • Replace Galley stove / oven control board, refurbish old board for spare **8/2018** • Replace 12kW generator and 20kW generator start batteries **4/2019** • Install drip shields over VIP Stateroom port lights **12/2018** • Replace heating element on Flybridge electric grill **5/2019** • Replace chill water expansion tank on A/C system **6/2019**

Remarks

"Travis McGee" is an excellent example of this ever popular owner operator family cruiser. Being Hull #14, out of 62 Hulls, of this series combined with many custom features and continuous upgrades makes for a pleasant cruising experience. The 65' Pacific Mariner, being part of the pedigree Westport Family, clearly reflects the excellence in construction, systems engineering and maximum use of living space. Featuring a rare 3 stateroom 3 ensuite head layout, I feel the 65' Pacific Mariner represents the best choice in the 60' to 70' motor yacht

Range. Most importantly, she is built in America , easily serviced, and appreciates an excellent follow of this classic pedigree, popular owner operator yacht. Owner wishing to down size. Quality 50' to 60' motor yachts considered on trade.

Exclusions

Personal items - A detail list will be provided at time of sale.

Исключения

При продаже яхты исключаются личные вещи владельца.

Отказ от ответственности

Компания предоставляет описание судна или яхты добросовестно, но не может гарантировать точность этой информации, а также не ручается за техническое состояние. Покупатель должен проинструктировать своих агентов или оценщиков исследовать представленную информацию более подробно, по собственному желанию. Продажа судна или яхты, изменение цены или снятие с продажи будет происходить без предварительного уведомления.

ФОТОГРАФИИ

Foredeck Sun Pad



Foredeck



Walk-around Side Deck



Flybridge Helm & Companion Seats



Upgraded Helm Console with Garmin Chart



Flybridge



Flybridge Settee



Flybridge / Grill / Refrigerator



Tender



Swim Platform / Aft Deck



Pilothouse Helm with Ugraded Garmin Chart Plotter



Pilothouse Settee



Galley



On Deck Galley



**Galley / Upgraded Refrigerator & Microwave
2017**



Main Salon Bar / Entertainment Center



Main Salon



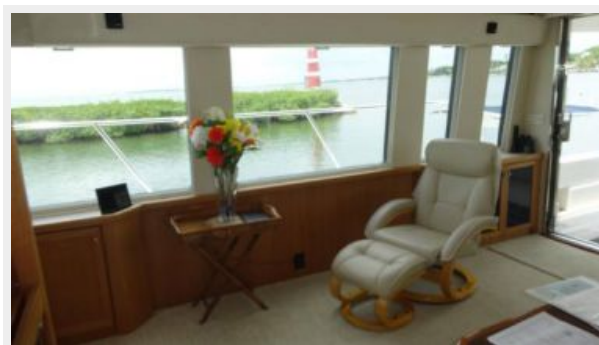
Main Salon with Hi-Lo Cocktail / Dining Table



Main Salon



Main Salon

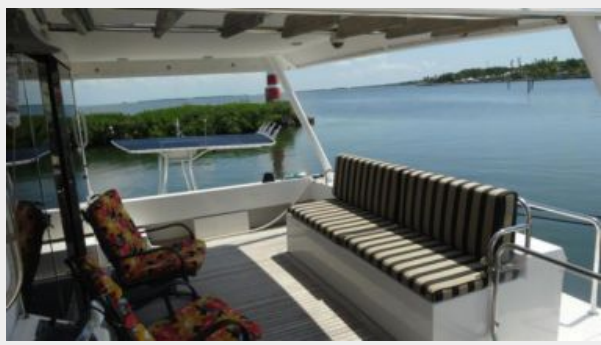


Generators Remote Start / Stop Controls

Ships Electric AC/DC Panel



Aft Deck Settee / Crew Access



Aft Deck



Custom Aft Deck Hinged Ladder



Aft Deck Ladder to Boat Deck / Flybridge



Aft Deck Control Station with Bow Thruster



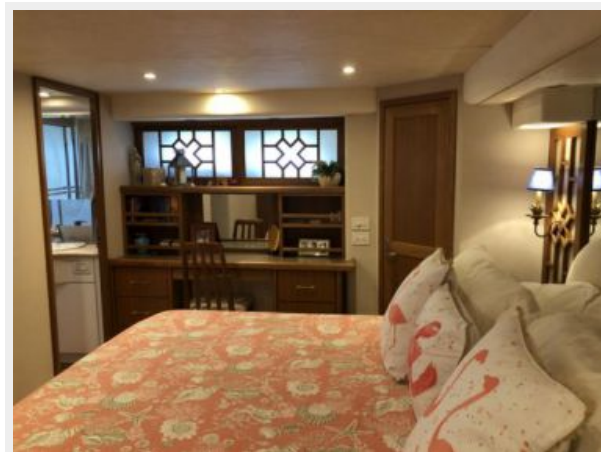
Master Stateroom with King Berth



Master Stateroom



Master Stateroom



Master Stateroom Head



Master Head Custom Linen / Cloth Hamper Cabinet



Forward VIP Stateroom



Forward VIP Stateroom



Forward VIP Stateroom Head



Forward VIP Stateroom Head



Port Guest Twin Berth Stateroom



Twin Berth Stateroom Ensuite Head



Crew Storage Locker / Freezer / Fresh Water Head

Aft Crew / Laundry Center



Laundry Center

Crew Single Berth



Full Beam Stand Up Engine Room



Port Engine



Starboard Engine



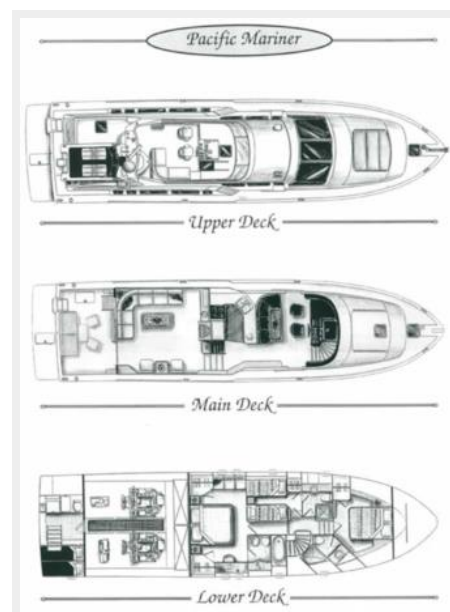
Profile



Profile



Layout



КОНТАКТЫ

Андрей Шестаков (Andrey Shestakov) – ведущий яхтенный брокер отдела продаж яхт и судов компании Shestakov Yacht Sales Inc. Официальный представитель Shestakov Yacht Sales Inc. для русскоговорящих клиентов в центральном офисе компании в Майами/Форт Лодердейл/Флорида/США.

Контактная информация

Email: andrey@shestakovyachtsales.com

Web: shestakovyachtsales.com

Телефоны

Краснодарский край: **+7(918)465-66-44**

США, Майами, Флорида: **+1(954)274-4435**

Время работы

Понедельник – Суббота: **9:00 - 21:00**
EDT

Воскресенье: **Закрыто**

Адрес



Harbour Towne Marina, 850 NE 3rd St,
STE 213, Dania, FL 33004