

2019 AZIMUT 50 FLYBRIDGE LA-SEA 5 — AZIMUT



Builder: AZIMUT

Year Built: 2018

Model: Motor Yacht

Price: PRICE ON APPLICATION

Location: United States

LOA: 50' 0" (15.24m)

Beam: 15' 3" (4.65m)

Min Draft: 4' 11" (1.50m)

Cruise Speed: 26 Kts. (30 MPH)

Max Speed: 32 Kts. (37 MPH)

Our experienced yacht broker, Andrey Shestakov, will help you choose and buy a yacht that best suits your needs 2019 Azimut 50 Flybridge LA-SEA 5 — AZIMUT from our catalogue. Presently, at Shestakov Yacht Sales Inc., we have a wide variety of yachts available on our sale's list. We also work in close contact with all the big yacht manufacturers from all over the world.

If you would like to buy a yacht 2019 Azimut 50 Flybridge LA-SEA 5 — AZIMUT or would like help answering any questions concerning purchasing, selling or chartering a yacht, please call +1(954)274-4435

TABLE OF CONTENTS

TABLE OF CONTENTS	2
SPECIFICATIONS	3
Basic Information	3
Dimensions	3
Speed, Capacities and Weight	3
Accommodations	3
Hull and Deck Information	4
Engine Information	4
DETAILED INFORMATION	5
Options	5
Exterior	6
Internal Layout	9
Electrical System	14
Other Systems	16
Exclusions	18
Disclaimer	18
PHOTOS	20
CONTACTS	26
Contact details	26
Telephones	26
Office hours	26
Address	26

SPECIFICATIONS

Basic Information

Category: Motor Yacht

Sub Category: Flybridge

Model Year: 2019

Year Built: 2018

Country: United States

Coast Guard #: 1291403

Vessel Top: Hardtop

Dimensions

LOA: 50' 0" (15.24m)

Beam: 15' 3" (4.65m)

Min Draft: 4' 11" (1.50m)

Clearance: 17' 1" (5.21m)

Speed, Capacities and Weight

Cruise Speed: 26 Kts. (30 MPH)

Cruise Speed Range: 290

Max Speed: 32 Kts. (37 MPH)

Displacement: 52910.94288 Pounds

Water Capacity: 155 Gallons

Holding Tank: 46 Gallons

Fuel Capacity: 580 Gallons

Fuel Consumption: 1 Gallons

Accommodations

Total Cabins: 3

Total Berths: 6

Sleeps: 8

Total Heads: 2

Captain Cabin: True

Crew Cabin: 1

Crew Berths: 1

Crew Sleeps: 1

Crew Heads: 1

Hull and Deck Information

Hull Material: Fiberglass

Deck Material: Teak and Fiberglass

Hull Color: White

Interior Designer: Stefano Righini

Engine Information

Engines: 2

Manufacturer: Volvo Penta

Model: D11

Fuel Type: Diesel

DETAILED INFORMATION

Options

- Additional Seakeeper control station on fly
- Audio/Video Package
- Cockpit chair (each) mod. Oskar
- Cockpit table
- Co-pilot seat in main helm
- Crew Cabin with Air Conditioning
- Dimmers in galley and fly
- Dimmers in salon and lower deck
- Extra socket
- Flagpole
- Floating Line (4" high - black)
- Flybridge Furniture w/Sink, Refrigerator
- Glendenning cable master 20mt
- Icemaker in cockpit
- LED lighting - Interior and exterior
- Lounge furniture on aft fly (nr.2 Love seats batyline grey fabric)
- Raymarine Platinum Package
- Refrigerator in galley & storage area
- Refrigerator drawer type in cockpit
- Scenic lights in lower deck
- Seakeeper Stabilizer
- Set of linen (crew cabin excluded)
- Set of linen - crew cabin
- Set of linen - Sofa Bed in salon
- Set of pottery
- Stainless steel set of cooking pans
- Starboard salon sofa/bed w/ hi-lo table
- Teak Deck on swim platform
- Teak on cockpit deck
- Tufted finishing on sofas settees
- Two decoration light sconces in salon
- Floodlights installed on aft flybridge
- Washer-dryer combo unit
- Wooden floor in salon & dinette

ADVANCED PACK

- Add'l control searchlight at lower helm
- Bow Thrusters

- Chaincounter control at main helm
- Decor
- Double Racor filters for main engines
- Easy Docking manouvering joystick for engine and thrusters (Xenta)
- Electric Mooring winches in cockpit
- External covers package (mesh cover for wind)
- Miele appliances (microwave combo and cooktop)
- Potholder
- Spare conduits connecting engine room
- wheelhouse/radar arch
- Sunbathing cushions on bow
- Hard Top LED lights
- Spare set of zincs
- Upgrade external cushions in Batyline fabric
- Sail awning with 4 poles

Exterior

Flybridge

- Accessible from the outside, cockpit stairs, port side.
- GRP cockpit stairs with 6 steps
- Teak external step flooring
- Non-slip floor
- Access door: watertight in aluminum and Plexiglas
- Smoked plexiglas windbreak with stainless steel and aluminum frame
- GRP rollbar
- Handrail: NMMA compliant stainless steel (tube 30 X 1.5) (stern fly handrail, fly access protection handrail, fly railing, mobile fly handrail)
- Bow sundeck
- Helm seat for 1 person
- Adjustable steering wheel (4-spoked steering wheel white painted)
- C-shaped sofa connected to sundeck
- Teak table with central stainless steel leg

- 1 bow locker (in front of instrument board)
- 1 locker under bench, RH side
- Manual HELLA 24V searchlight (on roll bar)
- Stainless steel light mast
- Flybridge instrument board consisting of:-Main engine instruments (thermometer, rev counter)-BRONZE series electronic navigation instruments-Engine start-up controls-Bow anchor winch controls-Horn control-Trim tab control-Bow thruster control-12V socket-Chain meter counter
- Scuppers with stainless steel grids and Azimut logo
- "50" logos, placed externally on the roll- bar glass, one on each side

Azimut logos, placed externally on the tails of the GRP superstructure, one on each side **Bow**

- Anchor chain and fender locker with water drainage
- DELTA 25kg galvanized steel anchor
- 75 m long high strength 10 mm gaged chain
- Bow roller
- 2000W WINCH
- 2 stainless steel bitts L. 300 mm oval tube
- Sundeck with non-slip finish
- Chain wash pump
- Non-slip floor
- Scuppers with stainless steel grids and Azimut logo
- Forward facing 6-seater sofa with seat and back cushions+ two underlying lockers

Walkways

- Filling with diesel: 2 "Diesel" filler caps diam. 88 mm with cover
- Filling with fresh water: 1 "Water" refill cap, diam. 85 mm
- Black water outlet: 1 "Waste" water cap diam. 75 mm without cover
- 2 stainless steel bitts L. 300 mm oval tube (intermediate)

- Non-slip floor
- Side handrail
- Fender holder: in stainless steel and high resistance PVC. Knurled section = (39.8 X 7.8) mm
- Pulpit

Cockpit

- Double cockpit access via stainless steel and Plexiglas gate
- 2 stainless steel T-head bitts H. 110 mm W. 350 mm
- 2 handrails (RH and LH) on the side of the deckhouse
- Warping station: dim. 1230X210
- Aft stainless steel left/right chock
- Vertical stainless steel double door with tempered glass
- 4-seater C-shaped cockpit bench (in GRP integrated in the deck, width 2.47 m)
- Cockpit bench cushions
- 1 locker under cockpit bench, LH side
- 1 port deckhouse column locker
- Lockers below bitt (one each side)
- RH locker with battery cut-out
- Engine room access via door in cockpit floor
- Crew cabin access via hatch in cockpit bench
- Non-skid floor (excluding side walkway access steps)
- Stern platform curved handrail
- Fly access stairs handrail
- Handles on the cockpit bench arm rests
- 2 loudspeakers
- Lighting: spotlights in cockpit ceiling panel

- Hot and cold water shower head
- Scuppers with stainless steel grids and Azimut logo

Platform

- Hydraulic platform
- Stern platform lights
- Non-slip floor
- Swimming ladder
- INSTALLABLE TENDER:-WORKING DIMENSIONS OF PLATFORM: 3.5 x 1.13 m-System max. net capacity (SYMMETRI- CAL): 800 kg (excluding platform)-Max. permitted capacity (asymmetri- cal): 370 kg (including platform)-HYPOTHETICAL PLATFORM TENDER: 3.2 x 1.5 m.-HYPOTHETICAL WILLIAMS TENDER:WILLIAMS Turbo Jet 285

Internal Layout

Saloon

- Decapè finish oak cupboards
- Carpeted floor
- Cupboard on port side
- (1) 4-seater C-shaped sofa on starboard side
- Suitable for installation of TV system with aerial
- Ceiling and wall upholstery: 2-tone fabric (ivory and brown, Nextel)
- Roman blinds for stern windows and sliding blind for saloon door

Dinette

- Dining area on left with rectangular fold- able table
- Carpeted floor
- Below deck accommodation ladder with carpeted steps

Galley

- Below deck to left of stairs

- Galley top and floor in laminate
- Glass ceramic range with 4 plates and pot holder
- Overhead extraction hood with active carbon filters
- Microwave oven + grill
- 1 stainless steel sink
- Fridge + 220-liter upright freezer
- Openable porthole

Corridor

- Carpeted below deck access
- Spotlight lighting
- Fabric bulwark upholstery
- Corridor grabrails

Owner's Cabin

- Located midship
- Double bed placed in the center astern with headboard
- 2 nightstands
- Vanity unit with mirror
- Cabinets with doors and shelves on right and left
- Wardrobe with hanger bar on left side
- Wardrobe with shelves in front of bed
- Power LED strips + headboard lighting
- 2 openable portholes
- 3 + 3 rectangular hull windows
- Direct access to the head from the corridor leading to the owner's cabin with internal stairs
- 1 mirror in wardrobe
- Metal Venetian blinds

- Fabric wall upholstery and wood paneling
- Fabric ceiling panels + some areas in Nextel
- TV system setup
- 110 V sockets
- Air conditioning system control panel

Owner's Head

- Located forward of the owner's cabin on the starboard side
- Access from owner's cabin
- GRP top and cognac (brown) colored Vetro Freddo sink
- Tecma toilet
- Chromed mixer taps
- Separate shower enclosure; flat shower door
- Chromed shower column
- Cupboard with 1 openable door next to washbasin top and under-basin cabinet with shelves
- Spotlight lighting
- 1 openable porthole
- Metal Venetian blinds
- Non-slip GRP flooring in shower
- Sockets
- Head accessories
- Head extractor: forced intake (from the shower ceiling panel)

Starboard-Side Guest Cabin

- 2 fixed pullman berths
- 1 nightstand next to beds
- 1 wardrobe with coat rack and shelves

- Lockers under bed
- fabric ceiling panel + some areas in Nex- tel
- Fabric bulwark upholstery
- Openable round porthole
- Metal Venetian blinds
- Carpeted floor
- Spotlight lighting
- 2 headboard lights
- Access to bathroom leading to corridor
- Sockets
- Air conditioning system control panel

Guest / VIP Bathroom

- Positioned abaft of the VIP cabin on the port side
- Washbasin with GRP top
- Direct access from the VIP cabin or from the corridor
- GRP top and cognac (brown) colored Vetro Freddo sink
- Chromed mixer tap
- Tecma toilet
- Separate shower enclosure with glass door
- Chromed shower column
- Spotlight lighting
- Underbasin cabinet with shelves
- Metal Venetian blinds
- Non-slip GRP flooring in shower
- Head extractor: forced intake (from the shower ceiling panel)
- Head accessories

- Openable round porthole
- Socket

VIP Cabin

- Located towards the bow, it is accessed via a central corridor
- Foldaway double bed with large locker underneath
- Wooden headboard
- 2 openable wall units with 2 storage areas (each side) over the windows
- 1 wardrobe on the starboard stern wall with hanger bar and shelves
- 1 wardrobe on the port stern wall with hanger bar
- 2 under bed lockers
- 2 headboard lights
- Fabric ceiling panels + some areas in Nex- tel.
- Lighting consisting of power strips in windows pelmet area + 2 ceiling spotlights + headboard light
- Emergency exit in ceiling through concealed rectangular hatchway leading to bow sundeck
- Direct access to guest head
- Mirror inside wardrobe
- 2 openable round portholes inserted in windows
- Metal Venetian blinds
- Fabric-upholstered bulwarks
- Fabric-upholstered ceiling panel
- Carpeted floor
- Air conditioning system control panel
- 110 V sockets

Crew Cabin

- Located at stern

- Access from cockpit bench
- Single bed with under-bed compartments
- 1 wall unit
- 1 wardrobe
- 1 bathroom cabinet
- Fabric bulwark upholstery
- GRP ceiling + upholstered panels
- Bulwark shelves, 1 at the foot of the bed, 1 over the rubber hold
- Openable round porthole with 250 mm. dia. over cockpit bench
- GRP non-slip floor
- 1 directional headboard wall light
- Spotlight lighting
- Fabric blind
- Crew head
- Tecma toilet
- White resin washbasin
- Chrome mixer with extractable shower head
- Shower area with waterproof curtain
- Wall unit with mirror
- Under sink door
- Power socket
- Head accessories

Electrical System

Shore-powered power supply

- Onboard voltages:

- 220V-60Hz AC

- 24V DC from battery bank

- 12V DC for VHF equipment and cigarette lighter socket

- The main boards are in the wheelhouse, engine room and crew area.
- The power circuit breakers that protect the instrument panel, engine controls, navigation instruments and shore power socket and generator selector switches are located in the wheelhouse.
- Other power circuit breakers that protect the various 12V DC and 100V AC utilities are located under the wheelhouse and are protected by a cover.
- Additional circuit breakers are located on the main panels in engine room to protect the various 12V DC utilities and the 110V AC utilities in the crew area
- Junction boxes are installed in all areas.

Generator

- 1 Kohler standard 3.5 kW 230V generator located in engine room

Shore Power Sockets

- 1 60A socket astern
- 1 for air conditioning (OPT)

Batteries

- Services: 6 400 Ah@24V DC, AGM type batteries
- Engines: 4 200 Ah@24V DC, AGM type batteries
- Generator: 1100Ah@12V, AGM type batteries
- 24 V battery charger: Mastervolt 24/60 3 Output- 60A-10A-10°
- 12V battery charger: Mastervolt 12/15 2 Output- 15°

Lights and Sockets

- AC sockets: 230V for main utility power supply
- DC sockets: cigarette lighter type (wheelhouse)
- 24 V lighting (halogen)

- 24V watertight external lights

Other Systems

Bilge system

- (3) 24V electric pumps (crew cabin, engine room, owner's cabin) with auto operation using level switch + wheelhouse controls
- 2 manual emergency pumps; 1 in owner's cabin and 1 in locker on port side of cockpit
- 1 Supersub Smart 650 24 V electric bilge pump, 24 l/min
- Level alarms in wheelhouse
- Rapid pumping of engine room connected to LH engine seawater system

Fire Extinguishing System

- Pull handle in cockpit on port side and emergency switch on emergency panel
- (1) 12 kg homologated canister with nozzles on engines
- Fuel delivery to engine and generator shut-off

Fuel System

- 2 aluminum tanks in engine room with a capacity of 1100 l and a total capacity of 2200 l
- Electronic fuel gauge on both tanks
- Optical fuel gauge on LH tank
- Single settling filters for engines
- 1 filter for generator
- 2 diesel fillers on walkway
- 2 breather pipes on bulwark
- Remote diesel shut-off (engine and generator) via 24V solenoid valve
- Pipe connecting the two tanks used to adjust the fuel supply
- Fuel drawing faucet on both tanks

Fresh Water System

- 590l polyethylene tank located under the bed in owner's cabin
- Water filling from port walkway
- Level sensor with electronic gauge in wheelhouse
- 1 tank discharge on the port bulwark
- 1 water pressure pump with electronic control
- 1 water heater, 60l
- Stern shore power socket on port side
- Hot/cold water pipe: bathrooms, galley, cockpit, bathroom platform shower; Cold water only in flybridge washbasin; cold water only in engine room
- Fresh water toilet flushing
- System that can be divided by ACORN manifolds
- Toilet fresh water supply

Black Water System

- 175 l polyethylene tank located under the floor in the galley/corridor
- Level sensor with gauge in wheelhouse
- 1 tank discharge pipe on starboard bulwark with anti-odor filter
- MANUAL pump operating switch with control switch in the wheelhouse
- 1 50 l/min macerator pump
- Intake from starboard walkway
- Outboard discharge
- Tecma toilet (with macerator pump). All toilets discharge into a tank

Gray Water System

- 175 l polyethylene tank located under accommodation corridor
- Tank discharge on port bulwark with anti-odor filter
- Level sensor with gauge in wheelhouse
- Water discharge directly into the sea by way of pump

- MAN/AUTO pump operating switch with control switch in the wheelhouse
- Three-way valve in galley for deciding whether to discharge into the sea or in the tank
- 1 50 l/min pump
- 16 l collection tank with integrated transfer/24V pump astern, under the crew tray for the crew utilities.
- Built-in level sensor in tank that automatically operates the pump that discharges directly into the sea

Seawater System

- Engine cooling system: includes (2) 3" seawater intakes with filter and valve (1 per engine)
- Generator cooling system: includes (1) 1" seawater intake with filter and valve
- Air conditioning cooling system: (1) 1" seawater intake with filter and valve
- Chain wash pump: (1) 1" seawater intake with filter and valve

Ventilation/Extraction

- Head ventilation: forced intake by way of 24V extractors
- Engine room:- Natural air intake through air duct with water separator (1 each side)- Forced ventilation: 2 24V extractors (1 each side)

MISC

- Steering system: hydraulic power steering with 2 round profile rudders.
- Trim tab system: consisting of 2 AISI 316 blades, activated by hydraulic cylinder, 24V electro-hydraulic control unit
- Air conditioning system:-Water-based system, WORLD version-1 compressor in engine room (60,000 total BTU)-1 seawater pump with relative intake-Each area has its own control panel making it independent

Exclusions

Owner's personal belongings.

Disclaimer

The Company offers the details of this vessel or yacht in good faith but cannot guarantee or warrant the accuracy of this information nor warrant the condition of the vessel. A buyer should

instruct his representatives, agents, or his surveyors, to investigate such details as the buyer desires validated. This vessel or yacht is offered subject to prior sale, price change, or withdrawal without notice.

PHOTOS

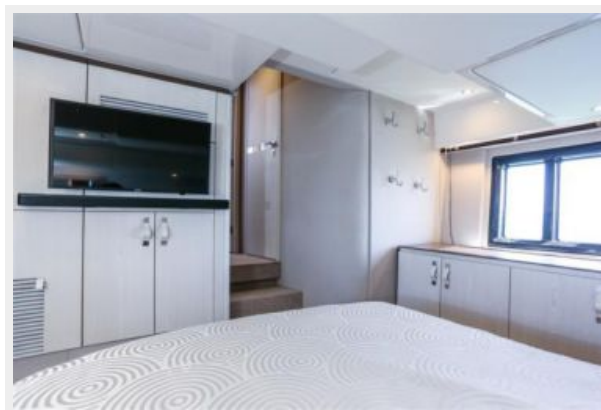












CONTACTS

Andrey Shestakov, leading yacht broker of the sales department of Shestakov Yacht Sales Inc. Shestakov Yacht Sales Inc., the official representative of the Miami/Fort Lauderdale FL headquarters.

Contact details

Email: **andrey@shestakovyachtsales.com**

Web: shestakovyachtsales.com/en/

Telephones

USA: **+1(954)274-4435**

Office hours

Monday – Saturday: **9:00 - 21:00 EDT**

Sunday: **closed**

Address



Harbour Towne Marina, 850 NE 3rd St,
STE 213, Dania, FL 33004