

VIRGEN DEL MAR — GRAND BANKS



Builder: GRAND BANKS

Year Built: 1975

Model: Motor Yacht

Price: PRICE ON APPLICATION

Location: Spain

LOA: 50' 11" (15.50m)

Beam: 16' 1" (4.90m)

Max Draft: 5' 0" (1.50m)

Cruise Speed: 10 Kts. (12 MPH)

Max Speed: 12 Kts. (14 MPH)

Our experienced yacht broker, Andrey Shestakov, will help you choose and buy a yacht that best suits your needs **Virgen del Mar — GRAND BANKS** from our catalogue. Presently, at Shestakov Yacht Sales Inc., we have a wide variety of yachts available on our sale's list. We also work in close contact with all the big yacht manufacturers from all over the world.

If you would like to buy a yacht **Virgen del Mar — GRAND BANKS** or would like help answering any questions concerning purchasing, selling or chartering a yacht, please call **+1(954)274-4435**

TABLE OF CONTENTS

TABLE OF CONTENTS	2
SPECIFICATIONS	3
Overview	3
Basic Information	4
Dimensions	4
Speed, Capacities and Weight	4
Accommodations	4
Hull and Deck Information	4
Engine Information	5
PHOTOS	6
CONTACTS	13
Contact details	13
Telephones	13
Office hours	13
Address	13

SPECIFICATIONS

Overview

Equipment

- New Yanmar 315HP Engines from 2016 with 715 hours -New propellers 2016
- Generator ONAN 12kw (1998)
- Bow Thruster.
- Autopilot NECO.
- Sounder FURUNO FCV-585.
- Sounder RAYTHEON L265.
- Plotter-Radar RAYMARINE C120.
- Plotter GEONAV 11color.
- VHF ICOM IC-M505 with repeater in fly.
- VHF SAILOR RT143.
- Shore Power & Battery charger.
- Dishwasher MIELE.
- Electric Oven BIFINETT.
- Induction hob.
- Fridge/freezer.
- Electric Anchor winch.
- Swimming platform with swimming ladder.
- Tender ASTEC 345 with outboard Suzuki 15hp

Basic Information

Category: Motor Yacht

Sub Category: Flybridge

Model Year: 1975

Year Built: 1975

Refit Year: 2016

Refit Type: New Engines

Country: Spain

Vessel Top: Bimini Top

Fly Bridge: Yes

Cockpit: Yes

Dimensions

LOA: 50' 11" (15.50m)

Beam: 16' 1" (4.90m)

Max Draft: 5' 0" (1.50m)

Speed, Capacities and Weight

Cruise Speed: 10 Kts. (12 MPH)

Max Speed: 12 Kts. (14 MPH)

Displacement: 59524.81074 Pounds

Water Capacity: 500.077694436 Gallons

Fuel Capacity: 999.89121682 Gallons

Accommodations

Total Cabins: 4

Total Heads: 3

Hull and Deck Information

Hull Material: Wood

Hull Configuration: Deep Vee

Engine Information

Engines: 2

Manufacturer: Yanmar

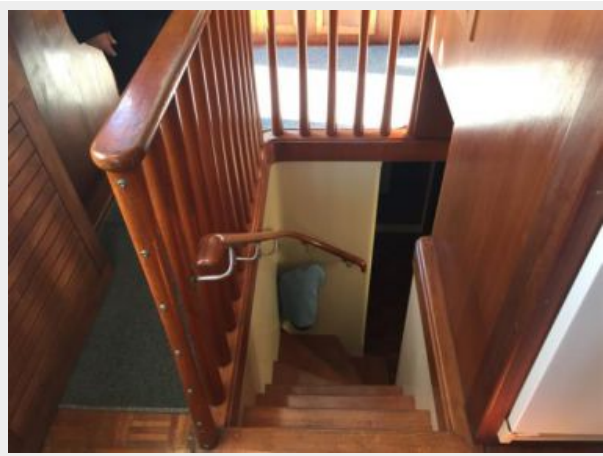
Engine Type: Inboard

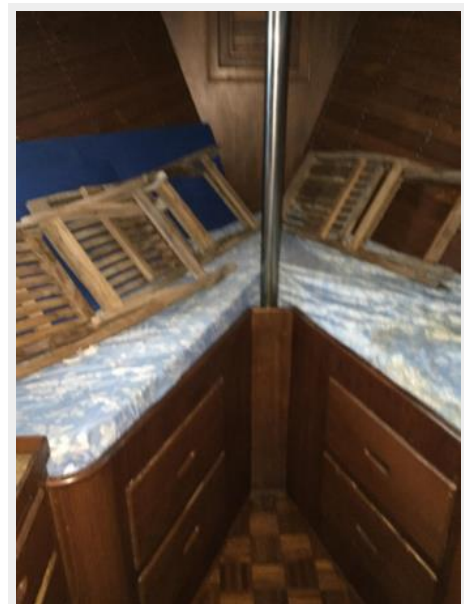
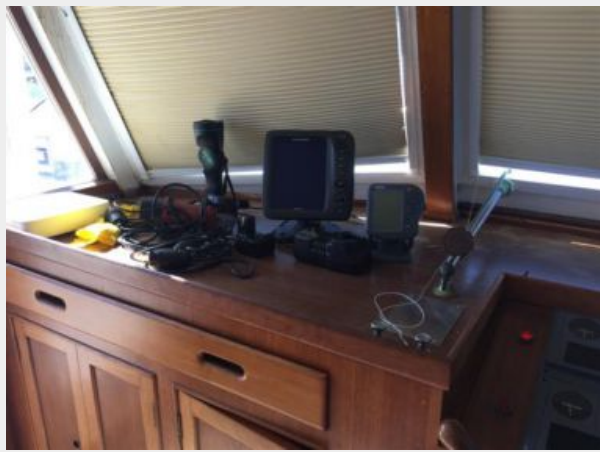
Fuel Type: Diesel

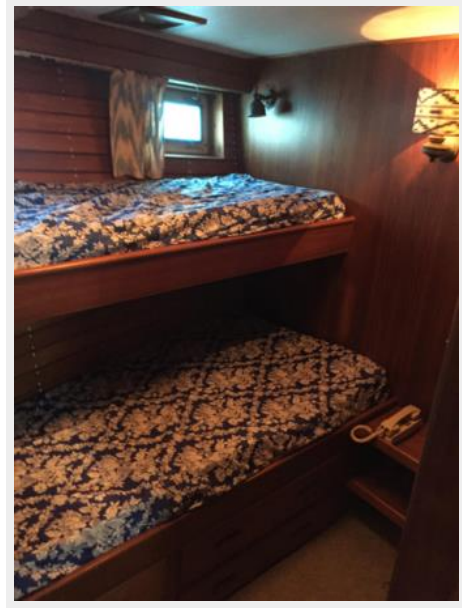
PHOTOS



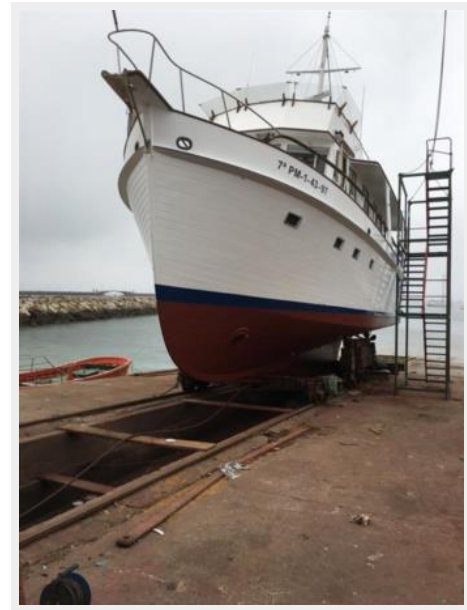












CONTACTS

Andrey Shestakov, leading yacht broker of the sales department of Shestakov Yacht Sales Inc. Shestakov Yacht Sales Inc., the official representative of the Miami/Fort Lauderdale FL headquarters.

Contact details

Email: andrey@shestakovyachtsales.com

Web: shestakovyachtsales.com/en/

Telephones

USA: +1(954)274-4435

Office hours

Monday – Saturday: **9:00 - 21:00** EDT

Sunday: **closed**

Address



Harbour Towne Marina, 850 NE 3rd St,
STE 213, Dania, FL 33004