

BELLEZZA — FAIRLINE



Судостроитель: FAIRLINE

Год постройки: 2002

Модель: Моторная яхта

Цена: ЦЕНА ЯХТЫ ПО ЗАПРОСУ

Местонахождение: United States

Длина общая: 58' 0" (17.68m)

Ширина: 16' 0" (4.88m)

Мин. осадка: 4' 7" (1.40m)

Крейс. скорость: 28 Kts. (32 MPH)

Макс. скорость: 32 Kts. (37 MPH)

Купить Bellezza — FAIRLINE а также выбрать подходящую вам яхту из нашего каталога яхт вам поможет опытный яхтенный брокер Андрей Шестаков. На сегодняшний день компания Shestakov Yacht Sales Inc. имеет большое количество яхт в собственном списке продаж, а также тесно сотрудничает со всеми крупными яхтенными производителями по всему миру.

Для того чтобы купить яхту Bellezza — FAIRLINE а также проконсультироваться по любому вопросу связанному с покупкой, продажей, чартером яхт позвоните по телефону **+7(918)465-66-44**.

ОГЛАВЛЕНИЕ

ОГЛАВЛЕНИЕ	2
ХАРАКТЕРИСТИКИ	5
Основная информация	5
Размеры	5
Скорость, вместимость и масса	5
Размещение	5
Корпус и палуба	6
Информация о двигателе	6
ПОДРОБНОЕ ОПИСАНИЕ	7
Accommodations	7
Key Features	7
Main Salon	8
Dinette	8
Master Stateroom	8
VIP Stateroom	8
Guest Stateroom	8
Galley/Utility	8
Main and Aft Deck	9
Flybridge	9
Helm and Electronics	9
Electrical	10
Engine and Mechanical	10
Exclusions	11
Mechanical Disclaimer	11
Disclaimer	11
Исключения	11
Отказ от ответственности	11
ФОТОГРАФИИ	13

Deck	13
Starboard Bow	13
Side Deck	13
Starboard Aft Qtr	13
Stern Profile	14
Swim Platform	14
Transom	14
Teak - like new!	14
Aft Deck	14
Salon	14
Salon	15
Lower Helm	15
Upper Helm	15
Upper Helm - Windshield	15
Dinette	15
Salon Seating - sistership	15
Master Stateroom	16
Master Head	16
VIP Stateroom	16
Guest Stateroom	16
Guest Head	16
Flybridge	16
Upper Helm	17
Upper Helm Electronics	17
Seating Forward of Upper Helm	17
Flybridge Companionway	17
Flybridge Sunpad Cushions	17
Flybridge Seating or Sunbathing	17
Port Engine	18

Starboard Engine	18
Engine Room	18
Engine Room	18
Engine Room	19
Engine Room	19
Engine Room	19
КОНТАКТЫ	20
Контактная информация	20
Телефоны	20
Время работы	20
Адрес	20

ХАРАКТЕРИСТИКИ

Основная информация

Тип судна: Моторная яхта

Подкатегория: Flybridge

Модельный год: 2002

Год постройки: 2002

Страна: United States

Номер регистрации в береговой
охране: 1161160

Верх: Bimini Top

Открытая палуба мостика: Да

Кубрик: Да

Размеры

Длина общая: 58' 0" (17.68m)

Ширина: 16' 0" (4.88m)

Мин. осадка: 4' 7" (1.40m)

Скорость, вместимость и масса

Крейс. скорость: 28 Kts. (32 MPH)

Макс. скорость: 32 Kts. (37 MPH)

Водоизмещение: 47000 Pounds

Вместимость воды: 266 Gallons

Объем топливного бака: 721 Gallons

Размещение

Всего кают: 3

Спальные места: 6

Всего ком. состава: 2

Корпус и палуба

Материал корпуса: Fiberglass

Информация о двигателе

Двигатели: 2

Производитель: Caterpillar

Модель: 3406E

Тип двигателя: Inboard

Тип топлива: Diesel

ПОДРОБНОЕ ОПИСАНИЕ

Accommodations

Sleeps 6 owners and guests in three staterooms including two guest heads and showers.

The 58 Squadron combines luxury, performance and practicality. Through-hull anchoring and expansive stowage keeps decks safe and tidy. Large oval flybridge with asymmetrical design makes it ideal for socializing. As you curve around the front of the three seater helm, positioned centrally, you will notice the large, upholstered semicircular sunbed. Behind the helm is a large settee with an adjustable table that will convert into a sunbathing area. There is a bar, with sink, ice maker, refrigerator and electric griddle and twin bimini tops.

The double deck layout offers full standing headroom throughout. The lower helm, has a madrone veneered instrument panel. The electrically adjustable pilot & co-pilot seats are located starboard forward of the fully equipped galley. Just to starboard of the helm is an aircraft style side exit door. This ample sized vessel boasts three staterooms, two with doubles and one twins. The Master occupies the entire forward section of the boat and features a queen size bed and head and shower facilities en-suite.

The Aft cockpit has a large alfresco settee that is shaded by the flybridge overhang. The transom leads to the vast bathing platform via the port or starboard side gates. Lacquered and polished fine wood decorate the entertainment center and the salon area which includes a six-seater dining area and a curvaceous bar with ice maker. The laundry room is located off the galley and has a freezer and Washer/Dryer. This 58 Squadron is fully equipped for cruising, comfort and relaxation.

Key Features

- Low Hrs. On Reliable Cat 3406e Engines 1440 Hrs (6/2019)
- New AGM Batteries (05/2016)
- Newer Flybridge Cushions
- Newer OEM Teak Decks in Perfect Condition
- Sat Tv
- Sat Receivers in All Locations (4)
- 4 TV's
- Double Bimini Tops
- Isinglass for Front Section
- Additional Blue Lights
- Ice Makers (Flybridge & Salon)
- Dishwasher
- Washer/Dryer
- New MDP Pro 100amp Battery Charger (2016)

Main Salon

Semi-circular settee with storage under and low table. Hi gloss cherry cabinetry incorporating: Ice maker, TV and Bose audio system, Cutlery set, Drinks unit with set of crystal glasses. Stainless steel framed, curved full width door to aft teak laid cockpit. Tinted glass to side windows (electrically operated), recessed overhead lighting, overhead grab rail, wooden blinds.

Dinette

Semi-circular dinette at raised bridge deck level facing the lower helm position, with an open view forward and access stairway to flybridge and AC/DC control panel.

Master Stateroom

King sized 6'6" X 5'7" double bed with innerspring mattress and under storage, Designer soft goods, Twin wardrobes with interior lights, Mid-level storage compartments, Recessed lighting, Reading lights, TV with SAT receiver, A/C controls, AM/FM/CD, Twin opening port holes with wooden venetian blinds, Large hatch with fly screen and privacy screen to foredeck, Full length mirror, Access to spacious en-suite head with sink and separate shower stall.

VIP Stateroom

Double 6'6" innerspring bed with under storage, Designer soft goods, Desk/Vanity unit, Double wardrobe with interior light, Twin opening port holes with fly screens and wooden venetian blinds, A/C control, TV with SAT receiver, AM/FM Radio, Mid-level storage doors, Recessed lighting, Reading lights, Private access to spacious day head with separate shower stall.

Guest Stateroom

Twin 6'6" single beds with innerspring mattresses, designer soft goods, bedside table, Mid-level storage compartments, Wardrobe with interior light, A/C control, TV with SAT receiver, AM/FM Stereo, Twin opening port holes with fly screens and venetian blinds, Recessed lighting, reading lights.

Galley/Utility

- Air Conditioner
- Dishwasher
- Freezer
- Refrigerator
- 4 Burner Ceramic Cook Top

- Microwave
- Fresh Water System
- Washer/Dryer
- Central Vacuum System
- Twin Sink Basin
- Smoke Alarm
- Abundant Storage
- Avonite Counter
- Garbage Disposal
- Bone China Dinner Service

Main and Aft Deck

Main Deck

Stainless steel through hull anchor system, Delta Anchor, 25 fathoms calibrated chain, Electric anchor winch, Twin Stainless steel bow & stern cleats, two pairs of stainless steel spring cleats, Stainless steel cleat and grab rail on each aft wing, Stainless steel pulpit and side deck rails with solid second rail and fender baskets, Full set of IMCO navigation lights, Moulded slip resistant deck surface, Sunbathing area on foredeck with cushions.

Aft Deck

Teak stairway to flybridge, Teak laid cockpit floor, Bench seating with access to large aft storage area, Twin transom gates to extra-large teak laid bathing platform, Hot & cold transom shower, Twin storage lockers, Access hatch to stowage hold, Fender storage, Twin warping drums, White cockpit overhead lights.

Flybridge

Twin Access via stairway from salon and by teak stairway with stainless handrail on aft deck. Blue Perspex hatch to internal stairway, large sunbathing area forward of helm position, seating to starboard of helm that converts to tilting sunbed, Flybridge bar complete with refrigerator, ice maker, sink, barbecue griddle and trash bin. Large C-shaped seating area with table that can be electrically lowered to convert area into sunbed. Stainless steel guard rails and grab rails and abundant storage.

Helm and Electronics

Lower Helm

Stainless steel windscreen with electrically opening side window, Madrone wood finish

instrument panel, electrically adjustable double helm seat, Electric single lever engine controls for engines and gearboxes, Full engine instrumentation, audible alarms, Remote anchor controls, Chart table and light, High speed compass, water level gauge, Bilge pump switches, Navigation & running light switches, 12V outlet, Door to side deck.

Upper Helm

- Full Engine Instrumentation (Both)
- Water Level Gauge (Lower)
- Map Light (Lower)
- Raymarine E125 12.1 Radar/GPS (Upper 2015)
- Raytheon 430 VHF/Loudhailer (Lower)
- Raymarine I70 Multi-Function (Both 2015)
- Raymarine E127 12.1" Radar/GPS (Both 2015)
- Simrad AP20 (Both)
- Raymarine VHF (Both 2015)
- Three Forward Facing Helm Seats and Most Items Repeated.
- Caterpillar Digital Display System (Lower)
- Bow Thruster Controls (Both)
- Remote Spotlight (Both)
- Trim Tab Control (Both)
- Tank Watch (Lower)
- Engine Synchronizers (Both)
- 12 Volt Outlet (Both)

Electrical

- 220v/110v/60hz Electrical System, Electrical Bonding and Lighting to ABYC Standards
- Battery Bank
- 220v/110v AC Electrical System
- 12v/24v DC Electrical System
- Electrical Bonding System
- Cablemaster
- Generator 21.5kw (2605 Hrs- 6/2019)
- Battery Parallel Switch
- Dockside Electrical Cable
- MDP Pro Series 100amp Battery Charger (2016)
- Voltage Meter
- Circuit Breaker Panel
- 75,000 Btu Chilled Ac/Reverse Heat

Engine and Mechanical

- Drip Less Shaft Seals
- Cathodic Protection
- Ventilation Fans
- Oil Transfer System
- Automatic Fire Control System
- Caterpillar 3406e 800hp (1440 Hrs. 6/2019)
- Engine Room Lights
- Fuel Filters
- Sea Strainers
- Sea Cocks On Fittings Below Waterline

Exclusions

Owners personal belongings, please inquire.

Mechanical Disclaimer

Engine hours are as of the date of the original listing and are a representation of what the listing broker is told by the owner and/or actual reading of the engine hour meters. The broker cannot guarantee the true hours. It is the responsibility of the purchaser and/or his agent to verify engine hours, warranties implied or otherwise and major overhauls as well as all other representations noted on the listing brochure.

Disclaimer

The company offers the details of this vessel in good faith but cannot guarantee or warrant the accuracy of this information nor warrant the condition of the vessel. A buyer should instruct his agents, or his surveyors, to investigate such details as the buyer desires validated. This vessel is offered subject to prior sale, price change or withdrawal without notice.

Исключения

При продаже яхты исключаются личные вещи владельца.

Отказ от ответственности

Компания предоставляет описание судна или яхты добросовестно, но не может гарантировать точность этой информации, а также не ручается за техническое состояние. Покупатель должен проинструктировать своих агентов или оценщиков исследовать представленную информацию более подробно, по собственному желанию.

Продажа судна или яхты, изменение цены или снятие с продажи будет происходить без предварительного уведомления.

ФОТОГРАФИИ

Deck



Starboard Bow



Side Deck



Starboard Aft Qtr



Stern Profile



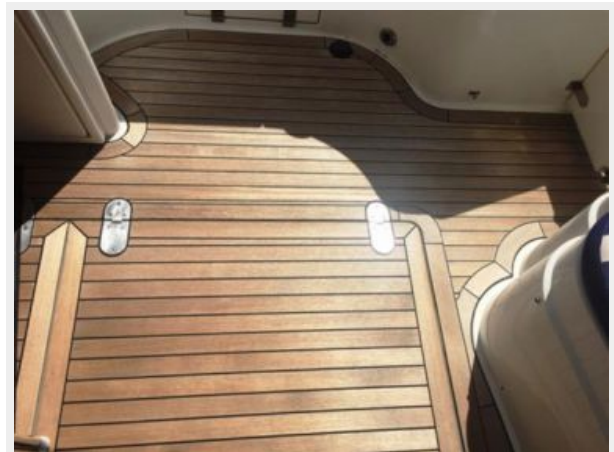
Swim Platform



Transom



Teak - like new!



Aft Deck



Salon



Salon



Lower Helm



Upper Helm



Upper Helm - Windshield



Dinette



Salon Seating - sistership



Master Stateroom



Master Head



VIP Stateroom



Guest Stateroom



Guest Head



Flybridge



Upper Helm



Upper Helm Electronics



Seating Forward of Upper Helm



Flybridge Companionway



Flybridge Sunpad Cushions



Flybridge Seating or Sunbathing



Port Engine



Starboard Engine



Engine Room



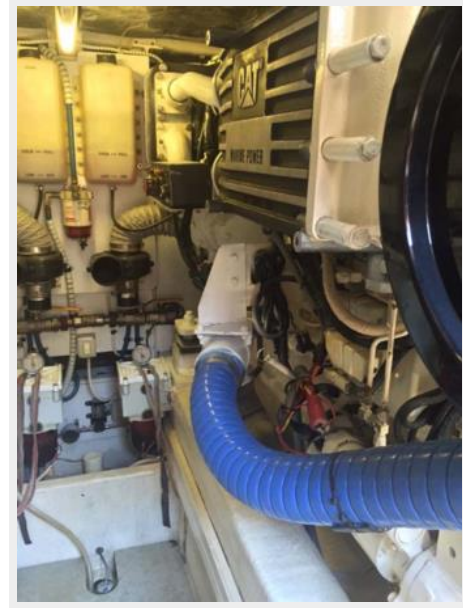
Engine Room



Engine Room



Engine Room



Engine Room



КОНТАКТЫ

Андрей Шестаков (Andrey Shestakov) – ведущий яхтенный брокер отдела продаж яхт и судов компании Shestakov Yacht Sales Inc. Официальный представитель Shestakov Yacht Sales Inc. для русскоговорящих клиентов в центральном офисе компании в Майами/Форт Лодердейл/Флорида/США.

Контактная информация

Email: andrey@shestakovyachtsales.com

Web: shestakovyachtsales.com

Телефоны

Краснодарский край: **+7(918)465-66-44**

США, Майами, Флорида: **+1(954)274-4435**

Время работы

Понедельник – Суббота: **9:00 - 21:00**
EDT

Воскресенье: **Закрито**

Адрес



Harbour Towne Marina, 850 NE 3rd St,
STE 213, Dania, FL 33004