

BETTINA VITA — NEPTUNUS



Судостроитель: NEPTUNUS

Год постройки: 1995

Модель: Моторная яхта

Цена: **ЦЕНА ЯХТЫ ПО ЗАПРОСУ**

Местонахождение: United States

Длина общая: 73' 0" (22.25m)

Ширина: 19' 6" (5.94m)

Мин. осадка: 5' 3" (1.60m)

Крейс. скорость: 16 Kts. (18 MPH)

Макс. скорость: 28 Kts. (32 MPH)

Купить **Bettina Vita — NEPTUNUS** а также выбрать подходящую вам яхту из нашего каталога яхт вам поможет опытный яхтенный брокер Андрей Шестаков. На сегодняшний день компания **Shestakov Yacht Sales Inc.** имеет большое количество яхт в собственном списке продаж, а также тесно сотрудничает со всеми крупными яхтенными производителями по всему миру.

Для того чтобы купить яхту **Bettina Vita — NEPTUNUS** а также проконсультироваться по любому вопросу связанному с покупкой, продажей, чартером яхт позвоните по телефону **+7(918)465-66-44**.

ОГЛАВЛЕНИЕ

ОГЛАВЛЕНИЕ	2
ХАРАКТЕРИСТИКИ	6
Обзор	6
Основная информация	7
Размеры	7
Скорость, вместимость и масса	7
Размещение	7
Корпус и палуба	8
Информация о двигателе	8
ФОТОГРАФИИ	9
1995 Neptunus 218/73 motor yacht	9
1995 Neptunus 218/73 motor yacht	9
1995 Neptunus 218/73 motor yacht	9
1995 Neptunus 218/73 motor yacht	9
IMG_7604	9
IMG_7588	9
IMG_7603	10
bow seating and sun pad	10
upper helm	10
name used in "Gemini Man"	10
Neptunus 218/73 stern	10
aft swim deck	10
Drone 5	11
1995 Neptunus 218/73 motor yacht	11
1995 Neptunus 218/73 motor yacht	11
main salon	11
IMG_7717	11
IMG_7719	11

galley	12
main salon	12
salon desk	12
IMG_7698	12
main salon	12
IMG_7700	12
new teak and holly sole	13
IMG_7701	13
IMG_7708	13
aft salon doors leading to deck	13
galley	13
new appliances	13
galley	14
IMG_7751	14
IMG_7730	14
VIP stateroom	14
VIP Stateroom	14
IMG_0658	14
IMG_7605	15
VIP Head	15
IMG_7626	15
VIP ensuite	15
below decks	15
port guest stateroom	15
twin berths in guest stateroom	16
IMG_7682	16
guest ensuite	16
guest ensuite	16
guest shower	16

master stateroom	16
master stateroom	17
IMG_7645	17
master stateroom	17
IMG_7644	17
master ensuite	17
master ensuite	17
IMG_7667	18
master stateroom port	18
IMG_7647	18
IMG_0652	18
helm	18
helm	18
IMG_7790	19
IMG_7761	19
helm	19
Neptunus 218/73 helm	19
New Garmin electronics	19
New Garmin GPS/Plotters	19
IMG_7768	20
IMG_7766	20
IMG_7767	20
IMG_7799	20
IMG_7791	20
engine bay	20
engine room	21
IMG_7508	21
16V92 rebuilt Detroit Diesel engines < 500 hours	21
IMG_7519	21

NEW generators - < 500 hrs	21
water maker	21
Neptunus_Valuation	22
neptunus layout diagram	22
КОНТАКТЫ	23
Контактная информация	23
Телефоны	23
Время работы	23
Адрес	23

ХАРАКТЕРИСТИКИ

Обзор

MAJOR \$200K PRICE REDUCTION!

Step aboard this stunning 1995 Neptunus 218/73 Motoryacht and feel like a movie star! A major 2018 remodel updated this dual station flybridge Motoryacht to modern standards of elegance.

Originally designed by Frank Mulder for Neptunus Yachts in the Netherlands. This vessel was extensively remodeled prior to filming for the movie "Gemini Man" starring Will Smith and "The Scratched 8." The film was released in October 2019.

THIS IS A 73 FOOT YACHT FOR LESS THAN 400,000. MAKE THE BUY OF A LIFETIME.

Major Overhaul by Detroit Diesel in October 2016 plus two new 2016 Kohler generators and Garmin electronics! Engines and Generators have less than 500 hrs!! Three stateroom ensuites, three heads, luxury galley, plus foredeck storage. Headroom of 6'6" for all lower deck staterooms, salon, and flybridge. The powerful twin-engine Detroit Diesels economically cruise at 16 knots running at 1600 RPMs. The bow efficiently moves water and easily handles 3+ foot waves at 4-8 second intervals. All new teak and holly sole in the main salon, new teak swim platform, and new teak aft cockpit. New cushions on the foredeck, aft cockpit, and new sofa in the main salon. Some foredeck work and a bottom job is required to address cosmetic and restoration options for new owners. All necessary refurbishment has been quoted at less than \$42k. The vessel is generously priced to accommodate market conditions and new owner retrofit/repairs. **REPLACEMENT VALUE OVER \$4,635,000.00**

NEW main salon, aft deck, and swim platform teak installed March 2018

NEW main salon upholstery and exterior upholstery March 2018

NEW Garmin navigation, Simrad, Sonar, Yacht Controller, Windlass installed November 2017

NEW Generator sets, exhaust system, sea fire protection, appliances installed October 2016

MARAD approved for Charter - August 2019

*****Call, text, or email Michael Harris at 843-868-1212 today for more information or to schedule a showing.*****

ALL OFFERS ENCOURAGED

Quick close, cash offers preferred.

Основная информация

Тип судна: Моторная яхта	Подкатегория: Pilothouse
Модельный год: 1995	Год постройки: 1995
Год обновления: 2018	Вид обновления: Refurbished engines, brightwork, cushions
Страна: United States	Номер регистрации в береговой охране: 1049146
Верх: Hardtop	Открытая палуба мостика: Да

Размеры

Длина общая: 73' 0" (22.25m)	Длина палубы: 73' 0" (22.25m)
Ширина: 19' 6" (5.94m)	Мин. осадка: 5' 3" (1.60m)
Трапы: 28' 6" (8.69m)	

Скорость, вместимость и масса

Крейс. скорость: 16 Kts. (18 MPH)	Крейсерская скорость поворота: 1600 Kts.
Макс. скорость: 28 Kts. (32 MPH)	Макс. скорость поворота: 2300 Kts.
Чистый вес: 48 Pounds	Вместимость воды: 450 Gallons
Вместимость сточного бака: 400 Gallons	Объем топливного бака: 1400 Gallons

Размещение

Всего кают: 3	Всего коек: 4
Спальные места: 6	Всего ком. состава: 3

Корпус и палуба

Материал корпуса: Fiberglass

Материал палубы: Teak

Комплектация корпуса: Semi Vee

Цвет корпуса: Navy Blue

Информация о двигателе

Двигатели: 2

Производитель: Detroit Diesel

Модель: 16V 92TA DDEC III

Тип двигателя: Inboard

Тип топлива: Diesel

ФОТОГРАФИИ

1995 Neptunus 218/73 motor yacht



1995 Neptunus 218/73 motor yacht



1995 Neptunus 218/73 motor yacht



1995 Neptunus 218/73 motor yacht



IMG_7604



IMG_7588



IMG_7603



bow seating and sun pad



upper helm



name used in "Gemini Man"



Neptunus 218/73 stern



aft swim deck



Drone 5



1995 Neptunus 218/73 motor yacht



1995 Neptunus 218/73 motor yacht



main salon



IMG_7717



IMG_7719



galley



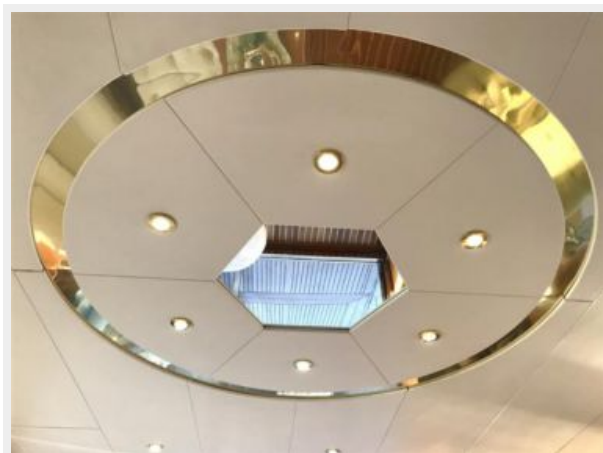
main salon



salon desk



IMG_7698



main salon



IMG_7700



new teak and holly sole



IMG_7701



IMG_7708



aft salon doors leading to deck



galley



new appliances



galley



IMG_7751



IMG_7730



VIP stateroom



VIP Stateroom



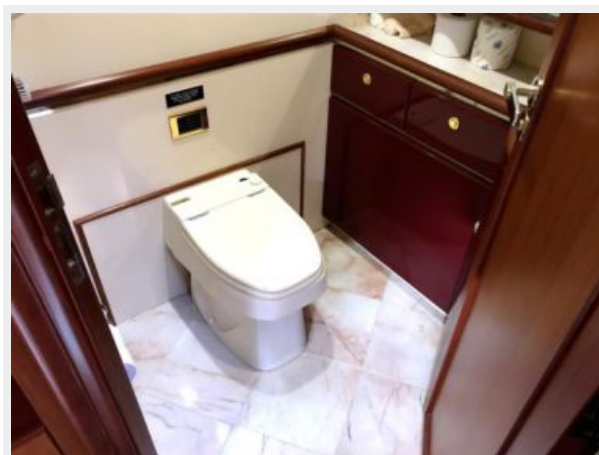
IMG_0658



IMG_7605



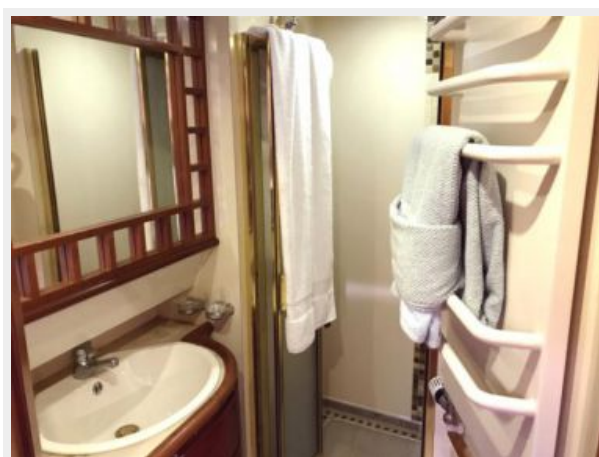
VIP Head



IMG_7626



VIP ensuite



below decks



port guest stateroom



twin berths in guest stateroom



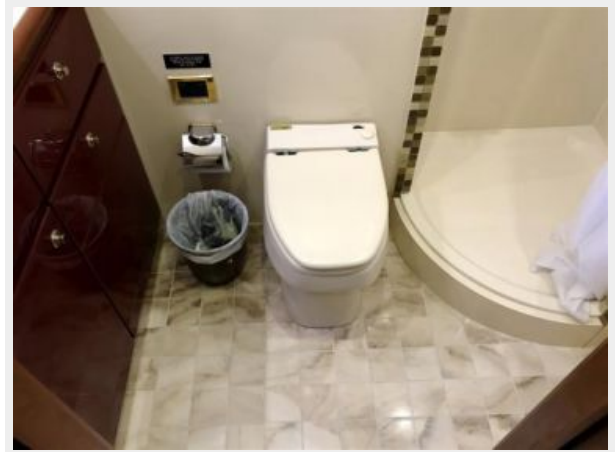
IMG_7682



guest ensuite



guest ensuite



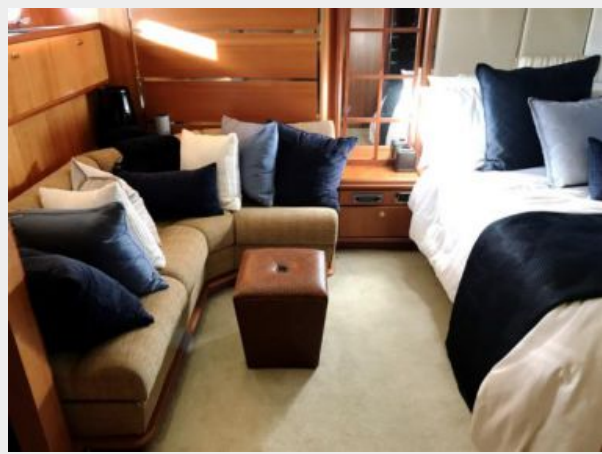
guest shower



master stateroom



master stateroom



IMG_7645



master stateroom



IMG_7644



master ensuite



master ensuite



IMG_7667



master stateroom port



IMG_7647



IMG_0652



helm



helm



IMG_7790



IMG_7761



helm



Neptunus 218/73 helm



New Garmin electronics



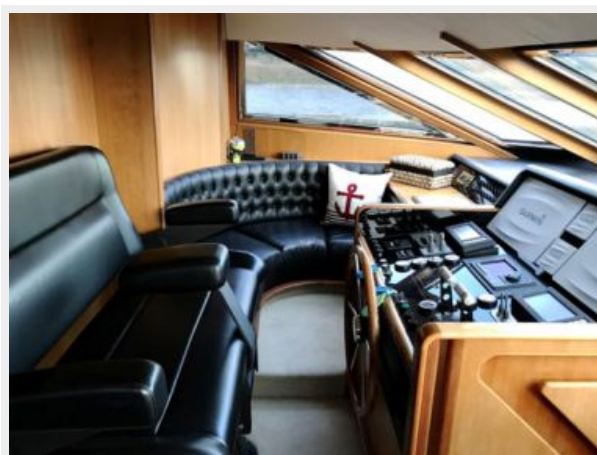
New Garmin GPS/Plotters



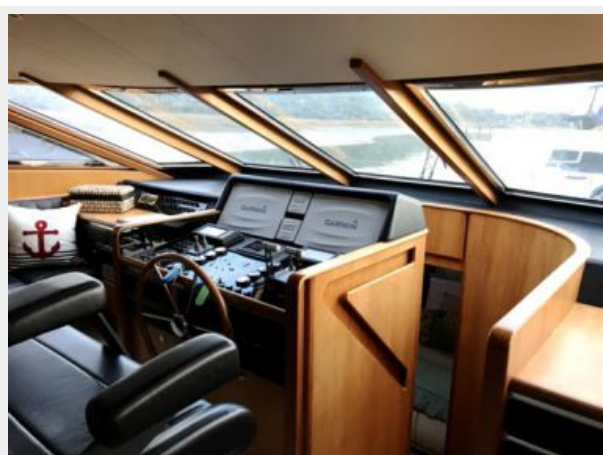
IMG_7768



IMG_7766



IMG_7767



IMG_7799



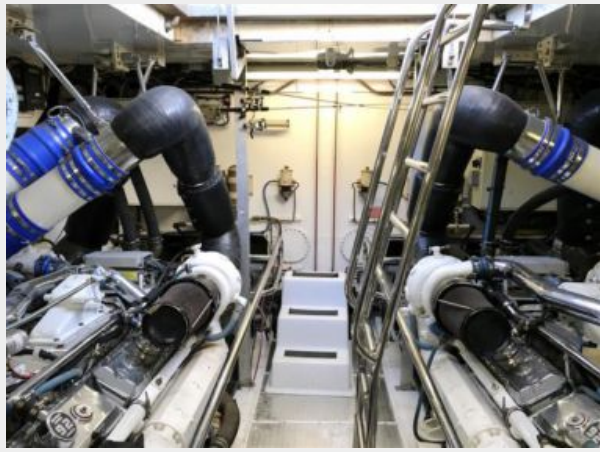
IMG_7791



engine bay



engine room



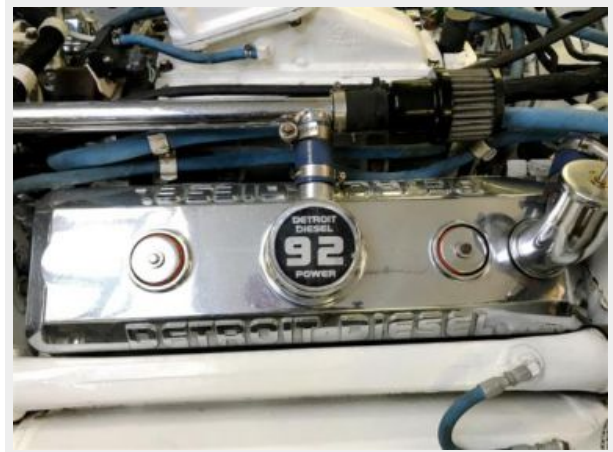
IMG_7508



IMG_7519



16V92 rebuilt Detroit Diesel engines & 500 hours



NEW generators - & 500 hrs



water maker



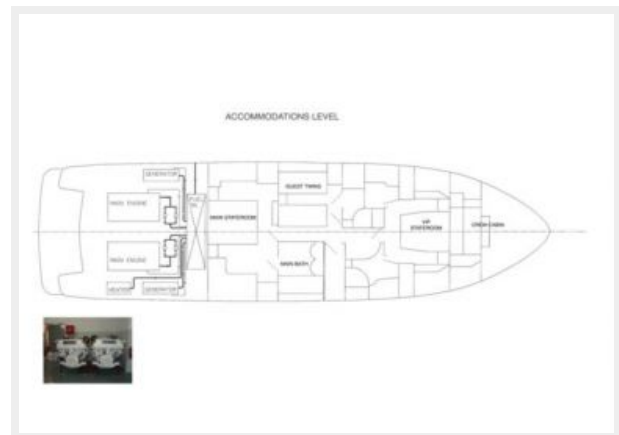
Neptunus_Valuation

NEPTUNUS YACHTS, ST. CATHARINES, ONTARIO, CANADA (MIC; XVP;NCL) NEPTUNUS CANADA LTD			
Model Year	1995	Hull Material	Fiberglass
Model	218/72 SEDAN	Hull Configuration	Semi Vee (Modified Vee)
Length Overall	73'	Draft	5' 3"
Length On Deck	73'	Beam	19' 6"
Boat Type	Sedan Cruiser	Weight	96000 lbs.
Engine Type	Inboard Twin 1450D Detroit Diesel	Ballast	

The information presented here is believed to be reliable but not guaranteed. For various reasons, including the subjective nature of vessel evaluations and the possibility of incomplete or inaccurate information regarding comparable vessels and sales thereof, we do not make any warranties whatsoever regarding this report, and WE EXPRESSLY DISCLAIM ALL WARRANTIES OF MERCHANTABILITY OR FITNESS FOR A PARTICULAR PURPOSE. BUC does not provide expert witness testimony.

Current Retail Value Range	\$718,000-\$789,000 Price changed after 115th edition.
Fair Retail Value Adjusted for Better Condition in the South Atlantic & Florida	\$841,500-\$924,500
Replacement Value	\$5,730,000

neptunus layout diagram



КОНТАКТЫ

Андрей Шестаков (Andrey Shestakov) – ведущий яхтенный брокер отдела продаж яхт и судов компании Shestakov Yacht Sales Inc. Официальный представитель Shestakov Yacht Sales Inc. для русскоговорящих клиентов в центральном офисе компании в Майами/Форт Лодердейл/Флорида/США.

Контактная информация

Email: andrey@shestakovyachtsales.com

Web: shestakovyachtsales.com

Телефоны

Краснодарский край: **+7(918)465-66-44**

США, Майами, Флорида: **+1(954)274-4435**

Время работы

Понедельник – Суббота: **9:00 - 21:00**
EDT

Воскресенье: **Закрито**

Адрес



Harbour Towne Marina, 850 NE 3rd St,
STE 213, Dania, FL 33004