

FORE ACES — HINCKLEY



Судостроитель: HINCKLEY

Год постройки: 2007

Модель: Моторная яхта

Цена: **ЦЕНА ЯХТЫ ПО ЗАПРОСУ**

Местонахождение: United States

Длина общая: 55' 3" (16.84m)

Ширина: 17' 9" (5.41m)

Макс. осадка: 2' 11" (0.89m)

Крейс. скорость: 26 Kts. (30 MPH)

Макс. скорость: 36 Kts. (41 MPH)

Купить **FORE ACES — HINCKLEY** а также выбрать подходящую вам яхту из нашего каталога яхт вам поможет опытный яхтенный брокер Андрей Шестаков. На сегодняшний день компания **Shestakov Yacht Sales Inc.** имеет большое количество яхт в собственном списке продаж, а также тесно сотрудничает со всеми крупными яхтенными производителями по всему миру.

Для того чтобы купить яхту **FORE ACES — HINCKLEY** а также проконсультироваться по любому вопросу связанному с покупкой, продажей, чартером яхт позвоните по телефону **+7(918)465-66-44**.

ОГЛАВЛЕНИЕ

ОГЛАВЛЕНИЕ	2
ХАРАКТЕРИСТИКИ	4
Обзор	4
Основная информация	4
Размеры	4
Скорость, вместимость и масса	5
Размещение	5
Корпус и палуба	5
Информация о двигателе	5
ПОДРОБНОЕ ОПИСАНИЕ	6
Accommodations	6
Salon	6
Galley	6
Master Stateroom	7
Twin Guest Stateroom	8
Pilothouse Helm Station / Electronics	8
Flybridge Equipment & Electronics	9
Deck Equipment	10
Cockpit Equipment	10
Electrical Equipment	11
Engine & Mechanical Equipment	11
Исключения	12
Отказ от ответственности	12
ФОТОГРАФИИ	13
КОНТАКТЫ	19
Контактная информация	19
Телефоны	19
Время работы	19

Адрес

19

ХАРАКТЕРИСТИКИ

Обзор

HIGHLY MOTIVATED SELLER - Most aggressively priced 55' flybridge on the market - One of only five built - Over \$100k in recent upgrades!

The 55' MKII Talaria remains Hinckley's flagship model to this day in their impressive power yacht line up. Hinckley has pioneered and perfected their Carbon / Kevlar resin infused hulls and composite parts by use of Scrimp technology for over a decade. With use of these processes the 55' Talaria MKII hull and superstructure's strength and light weight are second to none in her class when compared to her other composite vessel competitors

Основная информация

Тип судна: Моторная яхта

Подкатегория: Flybridge

Модельный год: 2007

Год постройки: 2007

Год обновления: 2017

Вид обновления: Flag Blu hull paint, all new soft goods, all machinery serviced

Страна: United States

Верх: Hardtop

Открытая палуба мостика: Да

Размеры

Длина общая: 55' 3" (16.84m)

Длина по ватерлинии: 51' 0" (15.54m)

Ширина: 17' 9" (5.41m)

Макс. осадка: 2' 11" (0.89m)

Трапы: 23' 1" (7.04m)

Длина привального бруса: 55' 3" (16.84m)

Скорость, вместимость и масса

Крейс. скорость: 26 Kts. (30 MPH)

Макс. скорость: 36 Kts. (41 MPH)

Водоизмещение: 65500 Pounds

Вместимость воды: 200 Gallons

Вместимость сточного бака: 100 Gallons **Объем топливного бака:** 1200 Gallons

Размещение

Всего кают: 2

Спальные места: 4

Всего ком. состава: 2

Корпус и палуба

Материал корпуса: Carbon Composite

Комплектация корпуса: Planing

Дизайнер корпуса: Michael Peters

Информация о двигателе

Двигатели: 2

Производитель: MAN

Модель: V12's

Тип топлива: Diesel

ПОДРОБНОЕ ОПИСАНИЕ

Accommodations

The 55' MKII Talaria remains Hinckley's flag ship model to this day in their impressive power yacht line up. Hinckley has pioneered and perfected their Carbon / Kevlar resin infused hulls and composite parts by use of Scrimp technology for over a decade. With use of these processes the 55' Talaria MKII hull and superstructure's strength and light weight are second to none in her class when compared to her other composite vessel competitors. FORE ACES a flybridge model, is one of only five built and features custom hardtop with four Bowmar skylight hatches. She is currently with her second owner since new and has been maintained to what Hinckley would consider bristol condition. In 2017, FORE ACES underwent a complete Flag Blue hull paint job, new soft goods throughout, refinishing and touch up of satin cherry interior joinery along with all machinery serviced. This vessel represents a unique opportunity to own a well maintained and upgraded flybridge model that provides a 26 knot plus cruise in complete comfort.

Salon

- Custom crafted satin cherry joinery throughout
- Electric blinds for side salon windows
- "L" shaped seating to stbd
- Hi/lo cherry table that converts to berth for (2)
- Power sliding vertical window at helm station for better visibility while maneuvering
- U-line icemaker hidden behind cherry door
- Curved glass stainless steel frame wall to wall floor to ceiling aft bulkhead w/black out shades
- Centerline fixed overhead cherry grab rail
- Sharp 37" Aquos TV on hi/lo lift w/ Bose stereo system
- (2) Custom crafted cherry chairs
- (2) Wall mounted sconces
- High gloss teak and holley sole
- 12v DC overhead lighting
- 12v DC plug receptacle
- Overheads - Gloss cherry baton panels w/ white perforation

Galley

- Corian tops w/ bullnose edging
- Dual basin stainless steel sink
- Custom molded "in counter" Grunert refrigeration box

- Gaggenau 2-burner glass cooktop
- (2) U-Line Echelon series refrigeration drawers
- Commercial stainless steel Sharp R-930 microwave
- Liebherr Grand Crus series wine cooler
- Custom cherry wine storage rack for (12)
- (2) Above counter dry storage w/ sliding cherry doors
- Lofted satin cherry cupboards and drawers throughout
- Fixed oval shaped porthole w/shade
- MarineAir climate control display
- Analog freshwater tank level gauge
- (2) GFCI protected outlets
- Broan trash compactor w/ cherry panel face

Master Stateroom

- Queen bed centerline w/ storage space below w/ ram assist
 - (4) Fixed oval shaped port holes with shades
 - (2) Double door closets w/ hanging racks & automatic DC lighting
 - Built-in settee & end table, to port
 - Built-in vanity / desk centerline forward in the cabin
 - (5) Single door storage lockers with shelving
 - (7) Lofted sliding drawers for clothes storage
 - (2) Recessed bedside nooks
 - (4) Wall mounted lighting sconces
 - Rope lighting underneath bed perimeter
 - Bose stereo system
 - MarineAir climate control display
 - (3) Outlet receptacles
 - DC Overhead lighting
 - High gloss teak and holley sole
 - Overheads - Gloss cherry baton panels w/ white perforation
 - Bowmar skylight hatch w/stainless steel handles blackout shade & screen combo
- Master Bath:
- Vac-U-Flush toilet
 - Stainless steel sink
 - Corian tops w/ bullnose edging
 - Vertical mirror w/ cherry trim
 - Horizontal mirror w/ cherry trim over sink
 - Oval shaped port hole w/ shade & screen
 - Cherry door closet w/ dual shelves
 - Fiberglass door closet underneath sink for storage / equipment access
 - (2) Stainless steel towel racks

- GFCI protected outlet
- Bowmar skylight hatch w/stainless handles, blackout shade / screen combo
- Stall shower w/ glass panel doors and Grohe fixture
- DC overhead lighting
- Air Conditioning supply vent
- Teak and holley sole
- Overheads - Gloss cherry baton panels w/ white perforation

Twin Guest Stateroom

- Custom crafted satin cherry joinery throughout
- (2) Twin berths w/ access hatches underneath
- Bowmar skylight hatch w/ stainless steel handles, blackout shade/screen combo
- Lofted cupboards and drawers throughout
- (2) Fixed oval shaped portholes w/ shades
- (2) DC reading lights
- DC overhead lighting
- MarineAir climate control display
- Power distribution panel access w/ security locks
- Helm electronics access panel
- High gloss teak and holley sole
- Overheads - Gloss cherry baton panels w/ white perforation Guest Bath:
- Vac-U-flush toilet
- Stainless steel sink
- Maroon Corian top with bullnose edging
- Oversized mirror with cherry trim
- Oval shaped openable port hole with shade and bug screen
- (2) Stainless steel towel racks
- TankWatch black water tank level monitor
- GFCI protected outlet
- Stand-up shower w/ folding glass doors and Grohe fixture
- Bowmar skylight hatch w/ stainless steel handles, blackout shade/screen combo
- Cherry door closet w/ dual shelves
- Fiberglass door closet underneath sink for storage /equipment access
- DC Overhead lighting

Pilothouse Helm Station / Electronics

- (2) Stidd adjustable helm chairs
- Infused carbon fiber console
- Raymarine 15" HybridTouch chart plotter / radar displays
- Raymarine Depth/Speed/Temp sensor

- Man 10" Engine display screen
- Exalto wiper controller for (3) wipers
- ACR spot light controller
- Lectro Tab trim tab controller
- Ocean Pursuits ships alarm panel system
- Emergency bilge pump controller
- Fire Boy alarm panel
- Marine Air digital diagnostic controller for chilled water system
- (2) Analog fuel tank gauges
- RexRoth engine control control binnacle
- Hinckley JetStick controller
- Raymarine Autopilot display
- Emergency backup bucket controller system
- Standard Horizon Command Mic VHF
- (2) Custom fabricated stainless steel cup holders
- Custom stainless steel foot rest
- Custom mahogany and stainless steel steering wheel
- (2) main engine start/stop switches

Flybridge Equipment & Electronics

- Custom fixed hardtop w/ (4) Bowmar skylight hatches and recessed DC lighting
- Entire helm dashboard is hinged for easy servicing and troubleshooting access
- Wide handle combination stainless steel and teak ladder for comfortable up / down access
- Stainless steel and curved Lexan windshield
- L-shaped seating arrangement w/ fixed height cherry table
- (4) Underneath seating storage lockers
- (2) Dashboard large storage lockers
- (2) Raymarine 15" HybridTouch chart plotter / radar displays
- Raymarine Depth/Speed/Temp sensor
- Man Engine 10" display screen
- Exalto wiper controller for (3) wipers
- ACR spot light controller
- Lectro Tab trim tab controller
- Ocean Pursuits ships alarm system
- (2) Analog fuel tank gauges
- RexRoth engine control control binnacle
- Hinckley JetStick controller
- Raymarine Autopilot display
- Fireboy alarm panel
- DC Navigation switch panel
- (2) Engine start / stop switches
- Stidd adjustable helm seat w/ double pedestal

- Red DC floor accent lighting
- (2) Bose speakers
- (4) Custom stainless steel cup holders
- Refrigeration cool box underneath port seating arrangement
- 12v DC plug outlet
- GFCI Protected outdoor outlet with stainless steel face cover
- Ritchie fluxgate compass

Deck Equipment

- Muir 2500 Series hydraulic windless
- Danforth stainless steel anchor
- ACR dual beam spotlight
- (4) Flush deck weather tight hatches w/ fender & line basins, port and stbd side decks
- (2) Hidden diesel fuel tank fills, one per side
- (2) Flush deck weather tight hatches w/ access bow storage compartment & anchor gear
- Flush deck weather tight hatch with access to top of anchor gear
- Tall stainless steel bow rail
- Stainless steel walk way grab rails port and starboard side decks
- (5) Bowmar stainless steel skylight hatches located on trunk cabin top
- (6) Custom molded flush stainless steel line chocks flush with teak tow rails
- (8) Stainless steel cleats (4) per side
- New bottom paint (Oct '19)

Cockpit Equipment

- Teak cockpit sole
- (3) Ocean LED underwater lights
- (6) Fiberglass door storage lockers w/ equipment access
- Oversized centerline hatch for access to generator, Hamilton drives and water maker system
- Molded fiberglass steps for accessing port and starboard side decks
- Molded fiberglass swim step w/ teak inserts
- Swim step access door in transom on starboard side w/ heavy duty stainless steel hardware
- Custom retractable forward facing bench seat
- DC switch panel control for lighting and power engine hatch lift
- (2) Bose speakers
- (2) Glendenning CM-7 50A shore power cord reels - port side cockpit
- Outlet receptacle

Electrical Equipment

- Digital volt meter for house battery bank
- Digital volt meter for engine start banks
- Digital voltmeter for all banks via source selector switch
- Digital volt meter for shore power input and generator output via source selector switch
- Digital volt meter for shore power and generator frequency via source selector switch
- Digital volt meter for AC current loads via source selector switch
- MasterVolt charger display
- MasterVolt inverter display
- ProMariner galvanic isolator display
- Shore power / generator source selection switches
- (2) Shore power main breakers
- Separate sub panel for inverter loads
- All circuit breakers features "circuit on" LED indication
- Westerbeke generator start/stop panel w/ analog gauges
- Sea Recovery water maker start/stop panel
- Lexan tinted door for panel protection

Engine & Mechanical Equipment

- Twin MAN V12 Turbo After Cooled, 1360 HP, 2300 RPM
- DeAngleo / Centek marine exhaust system for main engines
- Twin Disc MG-5145 Series gearboxes with reduction ratio of 1.03:1
- Hamilton 403 Series jet propulsion units (Serviced, Oct '19)
- SeaStar hydraulic steering system
- Westerbeke 15 KW Generator, BTDC series 120/240v AC & 24v DC (1192 hrs)
- (4) Raycor 75100MAX for main engine fuel filtration
- Raycor 500MA for generator fuel filtration
- New main engine raw water intake valves (Oct '19)
- Main engine heat exchangers serviced (Oct '19)
- Rule/ Bilge switch bilge pumping / monitoring system w/ (2) audible alarm panels
- Centek water separating exhaust system for generator
- (2) Fireboy fixed suppression units, alarm panels at both helm stations in ER & Lazarette
- Reverso oil change system for mains, gearboxes, and generator
- Emergency impeller bilge pump off of port main engine
- Hydraulic PTO off port main engine for bow thruster and windless
- Easily accessed fuel isolation valves for all engines
- Commercial sound insulation and perforation throughout
- Sea Recovery Aqua whisper series watermaker
- MasterVolt 24/100 series charger
- Master Volt 24/50 series charger
- MasterVolt AC/DC Inverter

- (4) 8D batteries – replaced '16
- (2) Glendenning CM-7 50A shore power cord reels – port side cockpit
- Lectro trim tabs
- Side Power hydraulic thruster
- Stainless steel hot water heater
- (2) Jabsco diaphragm pump freshwater system
- Rule grey box systemsA/C System:
- Marine Air Chilled Water system
- (3) 24,000 BTU Chillers units
- (2) Digital diagnostic controller displays (lower helm & ER)
- Chilled water circulating pump
- Sea water cooling pump w/ Groco strainer
- (5) Air handler units with zone control

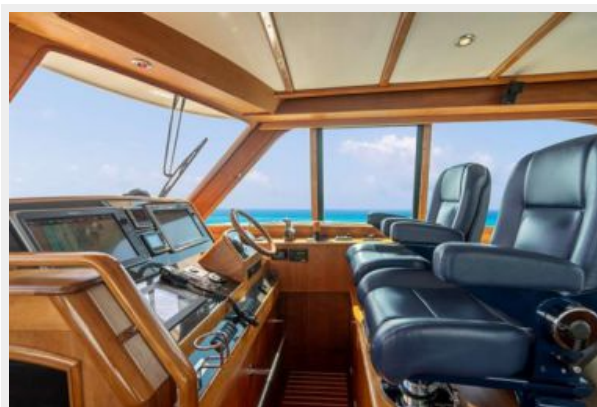
Исключения

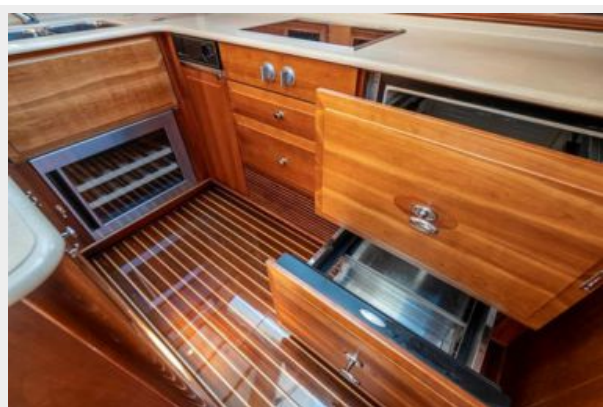
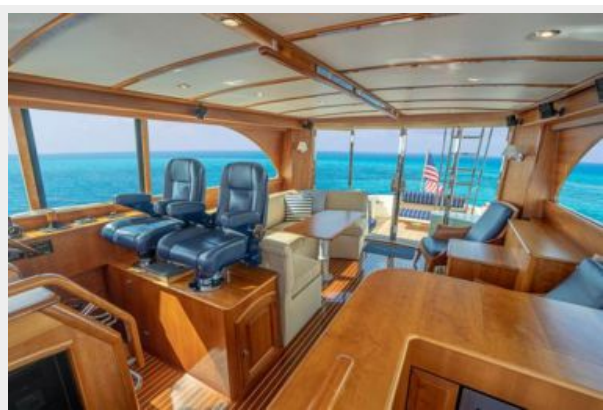
При продаже яхты исключаются личные вещи владельца.

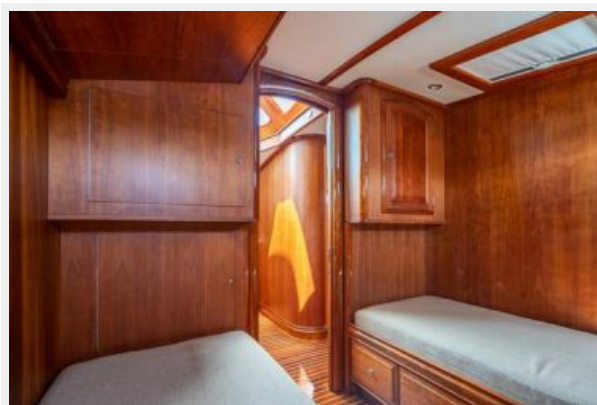
Отказ от ответственности

Компания предоставляет описание судна или яхты добросовестно, но не может гарантировать точность этой информации, а также не ручается за техническое состояние. Покупатель должен проинструктировать своих агентов или оценщиков исследовать представленную информацию более подробно, по собственному желанию. Продажа судна или яхты, изменение цены или снятие с продажи будет происходить без предварительного уведомления.

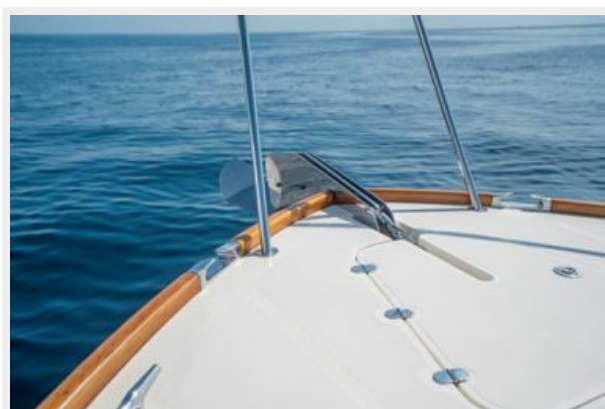
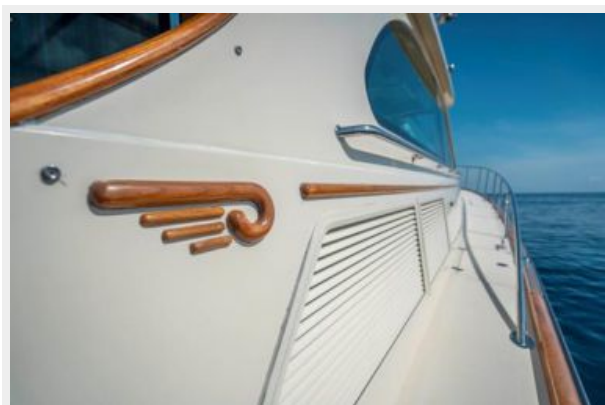
ФОТОГРАФИИ

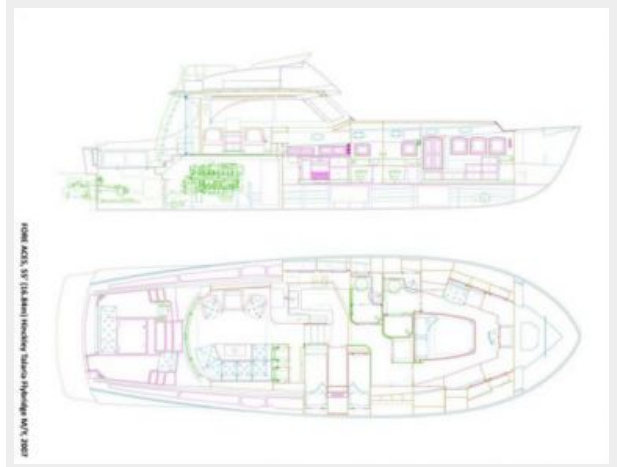












КОНТАКТЫ

Андрей Шестаков (Andrey Shestakov) – ведущий яхтенный брокер отдела продаж яхт и судов компании Shestakov Yacht Sales Inc. Официальный представитель Shestakov Yacht Sales Inc. для русскоговорящих клиентов в центральном офисе компании в Майами/Форт Лодердейл/Флорида/США.

Контактная информация

Email: andrey@shestakovyachtsales.com

Web: shestakovyachtsales.com

Телефоны

Краснодарский край: **+7(918)465-66-44**

США, Майами, Флорида: **+1(954)274-4435**

Время работы

Понедельник – Суббота: **9:00 - 21:00**
EDT

Воскресенье: **Закрето**

Адрес



Harbour Towne Marina, 850 NE 3rd St,
STE 213, Dania, FL 33004