

## FORGIVEN — SEA RAY



**Builder:** SEA RAY

**Year Built:** 1997

**Model:** Motor Yacht

**Price:** PRICE ON APPLICATION

**Location:** United States

**LOA:** 38' 2" (11.63m)

**Beam:** 14' 3" (4.34m)

**Min Draft:** 3' 2" (0.97m)

**Max Draft:** 3' 2" (0.97m)

**Cruise Speed:** 7.5 Kts. (9 MPH)

**Max Speed:** 10 Kts. (12 MPH)

Our experienced yacht broker, Andrey Shestakov, will help you choose and buy a yacht that best suits your needs **FORGIVEN — SEA RAY** from our catalogue. Presently, at Shestakov Yacht Sales Inc., we have a wide variety of yachts available on our sale's list. We also work in close contact with all the big yacht manufacturers from all over the world.

If you would like to buy a yacht **FORGIVEN — SEA RAY** or would like help answering any questions concerning purchasing, selling or chartering a yacht, please call **+1(954)274-4435**

# TABLE OF CONTENTS

TABLE OF CONTENTS	2
SPECIFICATIONS	5
Overview	5
Basic Information	5
Dimensions	5
Speed, Capacities and Weight	5
Accommodations	6
Hull and Deck Information	6
Engine Information	6
DETAILED INFORMATION	7
GENERAL DESCRIPTION	7
ENGINE NOTES	7
NOTABLE FEATURES	8
Exclusions	8
Disclaimer	8
PHOTOS	9
1998 Sea Ray 370 Aft Cabin & 10 ft Sun Dolphin	9
1998 Sea Ray 370 Aft Cabin	9
Spacious flybridge with new canvas	9
10 ft Sun Dolphin and Outboard	9
side-power bow thruster	9
flybridge helm	9
Garmin GPSmap chart plotter	10
New canvas and isinglass	10
new canvas and isinglass	10
flybridge with all new canvas	10
1998 Sea Ray 370 Aft Cabin	10
1998 Sea Ray 370 Aft Cabin bow	10

1998 Sea Ray 370 Aft Cabin sun deck	11
covered sun deck	11
wet bar with sink and ice maker	11
YES - the ice maker works!	11
Spacious sunlit main salon	11
wide beam main salon	11
main salon looking aft	12
well-appointed galley	12
large galley with refrigerator, stove top, and sink	12
lots of galley counters and cabinets	12
new refrigerator and freezer	13
3-burner electric cooktop	13
passageways below decks	13
forward VIP berth	13
walk-around v-berth	13
port quarter berth	13
day head with sink	14
spacious aft cabin	14
large aft cabin with ensuite	14
aft cabin looking port	14
ensuite with shower, sink, head	14
Tripp-Lite 3KW inverter	14
Battery charger	15
Nextgen 5.5 KW generator	15
Yanmar DIESELS	15
2002 Yanmar 100hp diesel	15
2002 Yanmar 100 hp diesel	15
engine room	15
dry and clean bilge	16

---

clean and organized engine room	16
1998 Sea Ray 370 Aft Cabin	16
1998 Sea Ray 370 Aft Cabin	16
CONTACTS	17
Contact details	17
Telephones	17
Office hours	17
Address	17

# SPECIFICATIONS

## Overview

PRICE REDUCED! One of the most popular cruising aft cabin motor-yachts Sea Ray ever produced. Well-appointed interior boasts expansive salon with L-shaped sofa, two roomy staterooms, generous storage, mini stateroom opposite of galley can be configured into utility room.

Engine Power has been modified for efficiency and long range cruising like a trawler. Converted to Twin 2002 Yanmar 100hp Diesel Engines. 5.5 kw NexGen Generator, Air Conditioning, Bowthruster, and many more features will be sure to impress the avid yachtsman.

## Basic Information

Category: Motor Yacht	Sub Category: Aft Cabin
Model Year: 1998	Year Built: 1997
Country: United States	Vessel Top: Bimini Top
Fly Bridge: Yes	

## Dimensions

LOA: 38' 2" (11.63m)	Beam: 14' 3" (4.34m)
Min Draft: 3' 2" (0.97m)	Max Draft: 3' 2" (0.97m)

## Speed, Capacities and Weight

Cruise Speed: 7.5 Kts. (9 MPH)	Cruise Speed Range: 500
Max Speed: 10 Kts. (12 MPH)	Displacement: 24000 Pounds
Water Capacity: 100 Gallons	Holding Tank: 54 Gallons
Fuel Capacity: 300 Gallons	

---

## Accommodations

---

**Total Cabins:** 3

**Total Berths:** 5

**Sleeps:** 5

**Total Heads:** 2

---

## Hull and Deck Information

---

**Hull Material:** Fiberglass

**Deck Material:** Fiberglass

**Hull Configuration:** Modified V-Hull

**Hull Color:** WHITE

**Hull Designer:** BRUNSWICK

---

## Engine Information

---

**Engines:** 2

**Manufacturer:** Yanmar

**Model:** 4JH3-HTE Turbo Diesel

**Fuel Type:** Diesel

---

# DETAILED INFORMATION

---

## GENERAL DESCRIPTION

---

The Sea Ray 370 Aft Cabin is a sport yacht that enables you to spend the night away from home. Powered by twin Yanmar 100hp Diesel Inboard Engines, the 370 Aft Cabin features a flybridge center helm station, 3 cabins, new canvas, generator, and a dinghy.

A wide 14-foot, three-inch beam enables the 370 Aft Cabin to provide ample, level walkways to the foredeck on both port and starboard sides. Welded stainless steel stanchions with through-bolted stainless steel handrails and bow rail ensure passengers a safe trip forward and aft.

The spacious aft deck is covered by a fiberglass hardtop, has port and starboard entrance doors, and can be fully enclosed by custom side and aft skirts. This deck features 12-volt lighting, a built-in wet bar with sink, ice maker, beverage holders, and trash receptacle. Access the bridge from the aft deck via portside molded steps. Two adjustable captain's chairs face the helm station. Guests can relax on the bench seat or the aft-facing sun lounger on the starboard side. The aluminum-framed Venturi windshield is tinted for optimum viewing. The center helm station has burl instrument panels with custom backlit instrumentation and electronics package that includes a VHF radio, GPS/Chartplotter, Autopilot, Depth.

Below decks, there's a large salon with an L-shaped sofa, a dining - cocktail table and an entertainment center. In the aft master stateroom, a queen-size bed with innerspring mattress ensures maximum comfort. Cedar-lined closets and a hanging locker with mirrored doors provide plenty of room for clothing. The en suite head has a VacuFlush toilet, Corian vanity with sink, and shower with seat and bifold door. The forward stateroom features a full-size pedestal bed, cedar-lined hanging lockers with mirrored doors, side shelf storage, a privacy door, and private access to the main head. The forward head compartment features a VacuFlush toilet, molded vanity with sink and Corian countertop, and pullout shower wand. The port stateroom features a twin bed and built-in storage. The galley has a 7.4-cubic-foot refrigerator - freezer, flush-mounted three-burner electric stove, and microwave

## ENGINE NOTES

---

She began her original life with twin 385HP gas engines then was converted to twin 100HP Yanmar 4JH3-HTE Turbo Diesel. The port engine engine has 3570hrs and the starboard engine has 4550hrs. These engines are 2002 model year and used originally in 45ft sailboats. The racors installed are setup for larger diesel engines in the future. The generator is a 5.5Kw NextGen with 1075hrs. The conversion is documented with all receipts provided during survey or serious inquires. She does not plane anymore but now cruises at Trawler speeds. • Top speed is 10mph • Cruising speed is 8.5mph 450 Mile Range• Long Range cruising is 6MPH with an estimated range of 620 miles.

---

## NOTABLE FEATURES

---

- Top speed is 9 knots at 3,500 RPMs
- Cruising speed is 7.4 knots at 2,500 RPMs with 450 Mile Range
- Long Range cruising is 6 knots with an estimated range of 620 miles.

### Specifications

Fuel : 300 Gallons of Diesel (2x150 gallon tanks Aluminum)Waste : 50 GallonsHot Water Heater : 10 GallonsFresh Water : 100 Gallons**SidePower Bow Thruster** dual prop with new battery and charger.**Vacuflush** have been maintained properly and parts replaced as needed.Forward Head pump has new Duck valves, upgraded quiet run electric motor, and bowel.Aft Head Pump Duck valves, upgraded quiet run electric motor, and bowel.**Air Conditioning** Throughout 10K BTU MarineAire AC less than 2yrs old in Forward cabin 16k BTU Webasto AC 2yrs old in salon 16k BTU Cruise Air AC 5yrs old in aft cabinConvection Microwave Oven3 Burner Electric Stove Cook TopUnder Counter **Fridge 2 months old** (AC)Forward V berth is a Queen size bedAft Cabin is a Queen size bed with new Tulo MattressPort side cabin/Storage is a single bed.Selling with the boat is a **10ft Sun Dolphin** with a new **Tohatsu 6hp four stroke** that has roughly 15hrs on it.**SeaDek** on the aft swim platform and stepsGarmin 4055 GPS/Charplotter43 inch Panasonic Flat screen TV in the Salon13 inch LG TV in forward cabin13 inch View Sonic TV in aft Cabin

---

## Exclusions

Owner's personal belongings.

---

## Disclaimer

The Company offers the details of this vessel or yacht in good faith but cannot guarantee or warrant the accuracy of this information nor warrant the condition of the vessel. A buyer should instruct his representatives, agents, or his surveyors, to investigate such details as the buyer desires validated. This vessel or yacht is offered subject to prior sale, price change, or withdrawal without notice.



# PHOTOS

**1998 Sea Ray 370 Aft Cabin**



**1998 Sea Ray 370 Aft Cabin & 10 ft Sun Dolphin**



**10 ft Sun Dolphin and Outboard**



**Spacious flybridge with new canvas**



**flybridge helm**



**side-power bow thruster**



**Garmin GPSmap chart plotter**



**New canvas and isinglass**



**new canvas and isinglass**



**flybridge with all new canvas**



**1998 Sea Ray 370 Aft Cabin**



**1998 Sea Ray 370 Aft Cabin bow**





**1998 Sea Ray 370 Aft Cabin sun deck**



**covered sun deck**



**wet bar with sink and ice maker**



**YES - the ice maker works!**



**Spacious sunlit main salon**



**wide beam main salon**



**main salon looking aft**



**well-appointed galley**



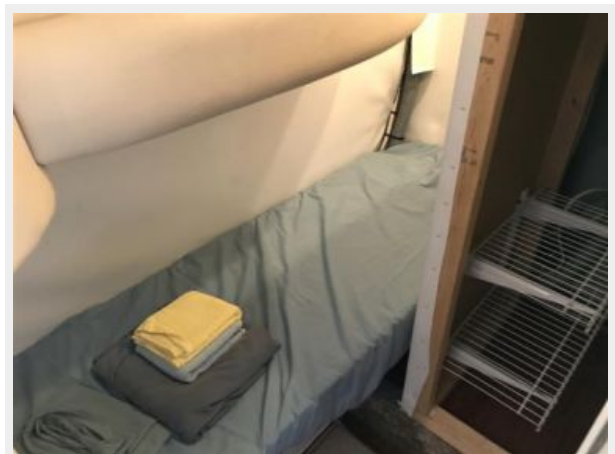
**large galley with refrigerator, stove top, and sink**



**lots of galley counters and cabinets**





**new refrigerator and freezer****3-burner electric cooktop****passageways below decks****forward VIP berth****walk-around v-berth****port quarter berth**

**day head with sink**



**spacious aft cabin**



**large aft cabin with ensuite**



**aft cabin looking port**



**ensuite with shower, sink, head**



**Tripp-Lite 3KW inverter**

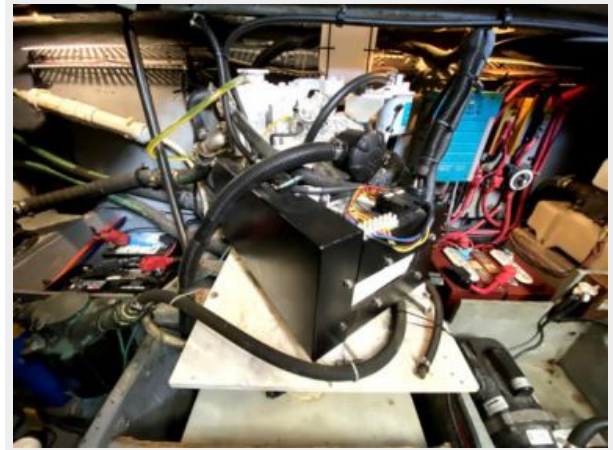




**Battery charger**



**Nextgen 5.5 KW generator**



**Yanmar DIESELS**



**2002 Yanmar 100hp diesel**



**2002 Yanmar 100 hp diesel**



**engine room**



**dry and clean bilge**



**clean and organized engine room**



**1998 Sea Ray 370 Aft Cabin**



**1998 Sea Ray 370 Aft Cabin**





# CONTACTS

---

Andrey Shestakov, leading yacht broker of the sales department of Shestakov Yacht Sales Inc. Shestakov Yacht Sales Inc., the official representative of the Miami/Fort Lauderdale FL headquarters.

## Contact details

---

Email: **andrey@shestakovyachtsales.com**

Web: [shestakovyachtsales.com/en/](http://shestakovyachtsales.com/en/)

## Telephones

---

USA: **+1(954)274-4435**

## Office hours

---

Monday – Saturday: **9:00 - 21:00 EDT**

Sunday: **closed**

## Address

---



Harbour Towne Marina, 850 NE 3rd St,  
STE 213, Dania, FL 33004