

## ROAA TRADE — SUNSEEKER



**Builder:** SUNSEEKER

**Year Built:** 2015

**Model:** Cruiser

**Price:** PRICE ON APPLICATION

**Location:** United States

**LOA:** 57' 0" (17.37m)

**Beam:** 15' 5" (4.70m)

**Max Draft:** 4' 3" (1.30m)

**Cruise Speed:** 23 Kts. (26 MPH)

**Max Speed:** 32 Kts. (37 MPH)

Our experienced yacht broker, Andrey Shestakov, will help you choose and buy a yacht that best suits your needs **ROAA TRADE — SUNSEEKER** from our catalogue. Presently, at Shestakov Yacht Sales Inc., we have a wide variety of yachts available on our sale's list. We also work in close contact with all the big yacht manufacturers from all over the world.

If you would like to buy a yacht **ROAA TRADE — SUNSEEKER** or would like help answering any questions concerning purchasing, selling or chartering a yacht, please call **+1(954)274-4435**

---

# TABLE OF CONTENTS

---

TABLE OF CONTENTS	2
SPECIFICATIONS	3
Overview	3
Basic Information	3
Dimensions	4
Speed, Capacities and Weight	4
Accommodations	4
Hull and Deck Information	4
Engine Information	4
DETAILED INFORMATION	5
Cockpit	5
Salon	5
Galley	5
Accommodations	6
Helm	7
Deck Equipment	7
Mechanical & Electrical	8
Construction	8
Exclusions	8
Disclaimer	8
PHOTOS	10
CONTACTS	19
Contact details	19
Telephones	19
Office hours	19
Address	19

---

# SPECIFICATIONS

---

## Overview

---

### *Ready to Cruise & Priced to Sell*

This 57 Predator is a trade from a loyal Sunseeker owner. After 3 years of appreciating this 57 Predator, the owner moved into a new Sunseeker making this well-loved express cruiser available.

Sleek and sexy, open and spacious, the Sunseeker Predator line brings style to the yachting community with this ideal model for day trips or extended cruising. The cockpit can be covered and the salon can be fully enclosed or when opened and combined these 2 areas provide an al fresco entertainment platform.

Comfortable accommodations are available for up to 6 with a 3 cabin/2 head layout plus an additional aft cabin for crew or an extra guest. Satin finish bleached white oak with gloss wenge accents create a stunning interior. The large galley is open to the salon with a dinette conveniently located to port.

Powered with twin Volvo Penta IPS 950's @725 hp each, her Pod Drives allow easy joystick maneuvering in tight quarters or while docking.

- Bow and Stern Thrusters
- Tender garage with hydraulic lift door
- Hydraulic lift swim platform

**BRING OFFERS - WILL TAKE TRADES**

## Basic Information

---

**Category:** Cruiser

**Sub Category:** Sport Cruiser

**Model Year:** 2015

**Year Built:** 2015

**Country:** United States

**Vessel Top:** Electronic Sunroof

**Cockpit:** Yes

---

## Dimensions

---

**LOA:** 57' 0" (17.37m)

**Beam:** 15' 5" (4.70m)

**Max Draft:** 4' 3" (1.30m)

**MFG Length:** 57' 9" (17.60m)

---

## Speed, Capacities and Weight

---

**Cruise Speed:** 23 Kts. (26 MPH)

**Cruise Speed Range:** 250

**Max Speed:** 32 Kts. (37 MPH)

**Displacement:** 61509 Pounds

**Water Capacity:** 158 Gallons

**Fuel Capacity:** 581 Gallons

---

## Accommodations

---

**Total Cabins:** 3

**Total Heads:** 2

---

## Hull and Deck Information

---

**Hull Material:** Fiberglass

**Hull Configuration:** Deep Vee

---

## Engine Information

---

**Engines:** 2

**Manufacturer:** Volvo Penta

**Model:** IPS 950

**Engine Type:** Inboard

**Fuel Type:** Diesel

---

## DETAILED INFORMATION

---

### Cockpit

---

Step aboard the large hydraulic swim platform and ascend the stairs into the fully covered aft cockpit. Extra large U-shape seating with a folding teak table present a welcome area to gather and entertain. There is a giant sunpad across the stern and a wet bar with ice maker, refrigerator and grill.

- Large sunpad
- Retractable electric awning
- Tender garage
- Wet bar with custom teak doors, refrigerator, ice maker and electric BBQ grill
- Upholstered settee w/storage below
- Teak cockpit table on stainless steel pedestal
- Stern safety gate
- Engine room access hatch
- 24v Overhead lighting
- 24v Low-level lighting
- Teak-laid cockpit and steps
- 4 x Sonance speakers

### Salon

---

The 57 Predator's salon can convert from a fully enclosed, air conditioned room to a completely open sport cruiser. The sunroof extends almost the entire length of the salon while the aft glass door slides open to port and the entire window and door can be lowered. With the sunroof open and the the sliding door and aft window lowered, the 57 is now a large, open entertainment area.

- U-Settee w/storage below
- Dining table
- Samsung 40" TV, Radio/CD/DVD/w/Bluetooth
- 24v Overhead lighting
- Stainless steel sliding cockpit door to aft cockpit w/drop down to create a completely open platform
- Teak deck

### Galley

---

The U-shaped galley is convenient for meal preparation or a quick snack. Open to the salon above with windows all around, the galley is airy and accessible. Cabinets all around and below counter fridge/freezer is only one of three fridges on the boat. The dinette to starboard completes

the eat-in space.

- Refrigerator/freezer
- 4-Burner ceramic cooktop
- Exhaust fan
- Microwave oven
- Stainless steel sink
- 6 place settings-China and flatware
- Cabinet and drawer storage
- Opening porthole w/screen
- Settee w/table opposite
- 22" Samsung
- Fusion DVD/CD/radio
- TV

---

## Accommodations

---

### MASTER-Full Beam

The full beam master is aft. Giant hull side windows provide beautiful aquatic vistas.

- Queen berth w/storage below
- Outboard cabinets and drawers
- Nightstands
- Settee
- Hanging locker with mirrored door
- Panoramic windows with opening portholes
- 40" Samsung TV
- Harmon Kardon Blu-ray/DVD/CD/radio
- Ensuite head and shower

### VIP-Forward

- Centerline Double berth w/storage and drawers beneath
- Outboard cabinets
- Hanging locker w/mirrored door
- 24v Overhead lighting
- Opening portholes and curtains
- Deck hatch
- 22" Samsung TV
- Fusion DVD/CD/radio
- En suite head and shower shared w/Guest Cabin

### GUEST CABIN-Starboard

- Over/under twin berths w/storage below
- 24v Reading lights
- Hanging locker with mirrored door
- Opening porthole w/screen and curtain
- 22" Samsung TV
- Fusion DVD/CD/radio

---

## Helm

---

Well equipped, the helm has all needed for safe navigation. Dual helm seats and 360 degree visibility provide ease of operation.

- Upholstered helm seats
- Console with piano black type fascia
- Hydraulic steering
- 2 x Simrad multifunction touch screen Chartplotter w/Simrad GPS
- Simrad radar
- Simrad Autopilot
- Simrad VHF radio w/DSC function
- Simrad Go-Free WiFi module
- Volvo Penta IPS dynamic positioning system
- Analog engine instrumentation
- Electric speedlog
- Depth sounder
- Rudder indicator
- Compass
- Horn
- Trim tab controls

---

## Deck Equipment

---

Combining style with functions, the deck spaces are convenient and well designed. Aft, the underwater lights provide an aquarium effect at night.

- Lewmar 25kg Delta anchor w/ 60m chain
- Lewmar 24v V5GD anchor winch
- Stemhead roller and anchor stop
- Self-draining chain locker-fender storage
- Pulpit and cockpit rails in stainless steel
- Foredeck sun pad w/adjustable back rests
- 2 x Speakers w/Sonos connect
- 16 x Low level LED side deck lights (8 per side)
- 2 x 24v pantograph wipers windshield washers

- Sanshin remote controlled searchlight
- Curved safety glass windscreen
- Retractable electric cockpit canopy
- Fresh water deck wash system
- Lewmar stern docking winches
- 4 x Aqualuma underwater lights

---

## Mechanical & Electrical

---

- Twin Volvo Penta IPS 950 @725 hp each
- 13.5kW Onan generator
- Sleipner 24v Bow Thruster
- Twin Kahlenburg Air Horns
- FM 200 fire extinguishing system
- Multi Alert Security and Monitoring System
- Plumbing and wiring for watermaker
- 6 x 24v Engine batteries
- 4 x 24v House batteries
- 2 x 12v Generator batteries
- 24v Battery charger
- 12v Battery charger
- Waterheater

---

## Construction

---

- Hand-laid GRP
- Gel coat including stripes
- Vinylester skin coat with powderbound mat
- Stitched multi-axial reinforced single-skin bottom
- Balsa-cored hull topsides
- PVC foam-cored deck and superstructure
- Hull stiffened with longitudinal stringers supported by transverse bulkheads and floors

---

## Exclusions

---

Owner's personal belongings.

---

## Disclaimer

---

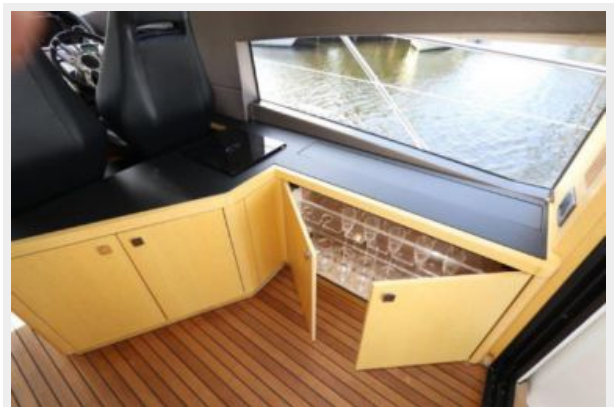
The Company offers the details of this vessel or yacht in good faith but cannot guarantee or warrant the accuracy of this information nor warrant the condition of the vessel. A buyer should



instruct his representatives, agents, or his surveyors, to investigate such details as the buyer desires validated. This vessel or yacht is offered subject to prior sale, price change, or withdrawal without notice.

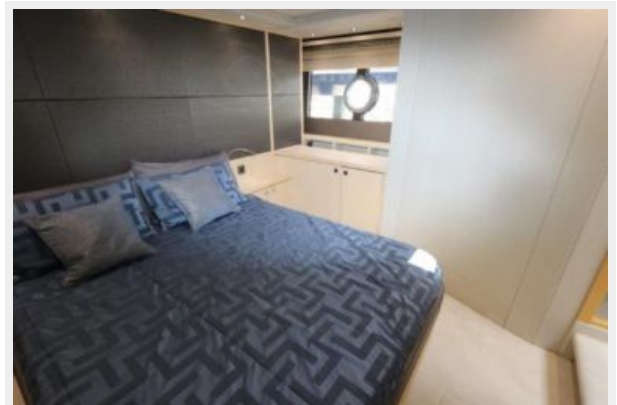
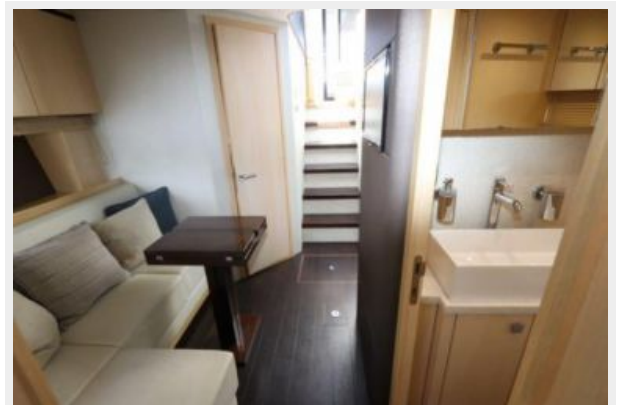
# PHOTOS



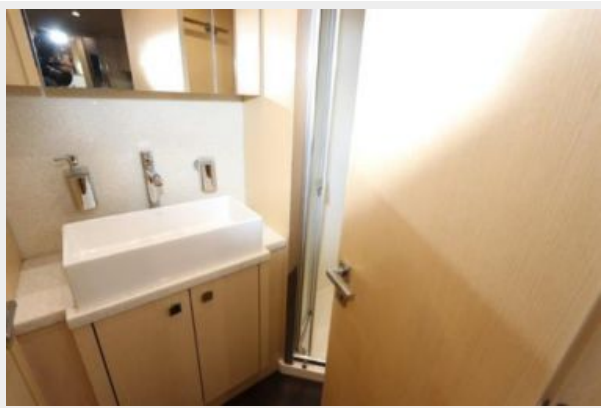


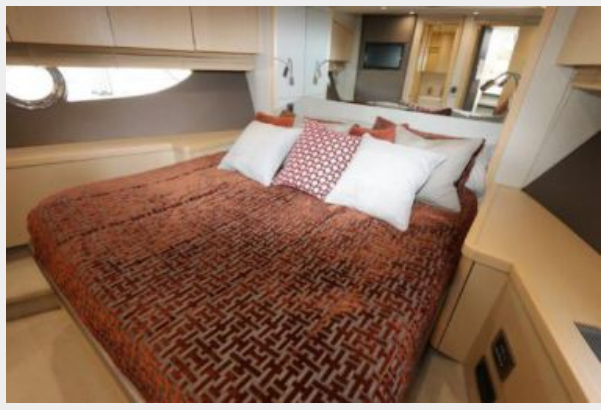




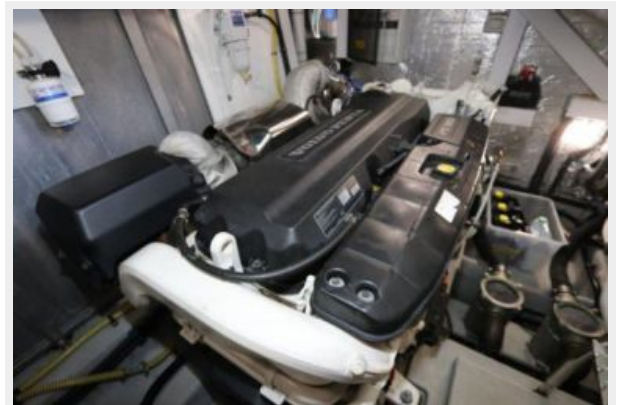




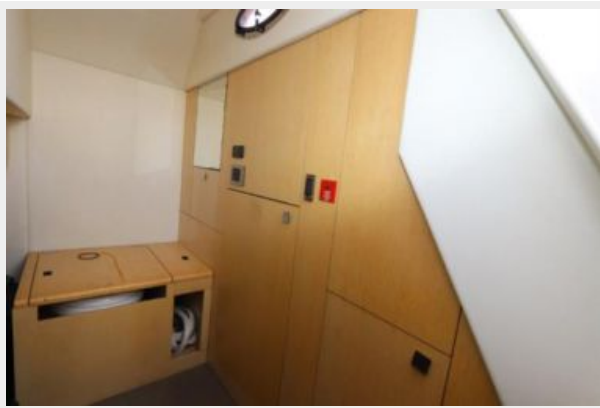
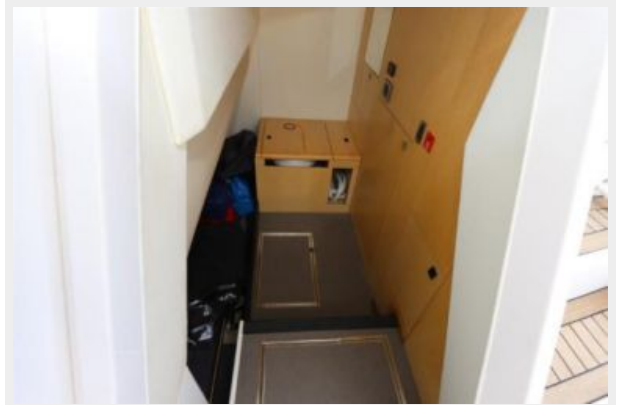














# CONTACTS

---

Andrey Shestakov, leading yacht broker of the sales department of Shestakov Yacht Sales Inc. Shestakov Yacht Sales Inc., the official representative of the Miami/Fort Lauderdale FL headquarters.

## Contact details

---

Email: [andrey@shestakovyachtsales.com](mailto:andrey@shestakovyachtsales.com)

Web: [shestakovyachtsales.com/en/](http://shestakovyachtsales.com/en/)

## Telephones

---

USA: +1(954)274-4435

## Office hours

---

Monday – Saturday: **9:00 - 21:00** EDT

Sunday: **closed**

## Address

---



Harbour Towne Marina, 850 NE 3rd St,  
STE 213, Dania, FL 33004