

JET PRIVÉ — AZIMUT



Builder: [AZIMUT](#)

Year Built: 2016

Model: Cruiser

Price: PRICE ON APPLICATION

Location: United States

LOA: 50' 0" (15.24m)

Beam: 15' 3" (4.65m)

Max Draft: 4' 11" (1.50m)

Our experienced yacht broker, Andrey Shestakov, will help you choose and buy a yacht that best suits your needs JET PRIVÉ — AZIMUT from our catalogue. Presently, at Shestakov Yacht Sales Inc., we have a wide variety of yachts available on our sale's list. We also work in close contact with all the big yacht manufacturers from all over the world.

If you would like to buy a yacht JET PRIVÉ — AZIMUT or would like help answering any questions concerning purchasing, selling or chartering a yacht, please call +1(954)274-4435

TABLE OF CONTENTS

TABLE OF CONTENTS	2
SPECIFICATIONS	5
Overview	5
Basic Information	5
Dimensions	5
Speed, Capacities and Weight	5
Accommodations	6
Hull and Deck Information	6
Engine Information	6
PHOTOS	7
Bow	7
Port Profile	7
Starboard Bow	7
Starboard Profile	7
Stern	7
Starboard Profile	7
Aerial Shot	8
Foredeck	8
Foredeck Sun Pad	8
Foredeck Sun Pad	8
Cockpit	8
Cockpit	8
Port Side Deck Looking Aft	9
Port Side Deck Looking Aft	9
Starboard Side Deck Looking Forward	9
Swim Platform and Transom	9
Bridge Seating	9
Bridge Aft Seating	9

Bridge Helm	10
Bridge Seating	10
Bridge Seating	10
Bridge Seating	10
Bridge Wet Bar and Seating	10
Bridge Wet Bar	10
Salon	11
Salon Entertainment	11
Salon Seating	11
Dinette	11
Galley	11
Galley	11
Lower Helm	12
Lower Helm Electronics	12
Raymarine Engine Hours	12
Master Stateroom	12
Master Stateroom	12
Master Stateroom	12
Master Stateroom	13
Master Stateroom	13
Master Head/Wash Basin	13
Master Head/Shower	13
VIP Stateroom	13
VIP Stateroom	13
Guest Stateroom	14
VIP and Guest Staterooms	14
Guest Head	14
Guest Head	14
Crew Quarters	15

Crew Quarters	15
Engine Room	15
Engine Room	15
Engine Room	15
CONTACTS	16
Contact details	16
Telephones	16
Office hours	16
Address	16

SPECIFICATIONS

Overview

Price Just Reduced - BOAT SHOW SPECIAL!

This 2016 50 Azimut Flybridge Yacht is in Showroom Condition, Turnkey and ready for a Cruise to the Bahamas or any waters of your choice.

Equipped and Powered by Twin Volvo D11 with very low hours including the cleanest engine room on the market. No feature spared by the Original Owner who even purchased a Separate Xenta Wireless Remote to assist the Xenta Joystick Control system at both Helms.

NOT FOR SALE TO US RESIDENTS WHILE IN US WATERS

ANY US RESIDENT CAN PURCHASE THIS BOAT WITH AN OFFSHORE CLOSING

Basic Information

Category: Cruiser

Sub Category: Sport Cruiser

Model Year: 2016

Year Built: 2016

Country: United States

Fly Bridge: Yes

Dimensions

LOA: 50' 0" (15.24m)

Beam: 15' 3" (4.65m)

Max Draft: 4' 11" (1.50m)

MFG Length: 52' 1" (15.87m)

Speed, Capacities and Weight

Displacement: 54670 Pounds

Water Capacity: 156 Gallons

Fuel Capacity: 555 Gallons

Accommodations

Total Cabins: 3

Total Heads: 2

Hull and Deck Information

Hull Material: Fiberglass

Hull Configuration: Deep Vee

Engine Information

Engines: 2

Manufacturer: Volvo Penta

Model: D11

Engine Type: Inboard

Fuel Type: Diesel

PHOTOS

Port Profile



Bow



Starboard Bow



Starboard Profile



Starboard Profile



Stern



Aerial Shot



Foredeck



Foredeck Sun Pad



Foredeck Sun Pad



Cockpit



Cockpit



Port Side Deck Looking Aft



Port Side Deck Looking Aft



Starboard Side Deck Looking Forward



Swim Platform and Transom



Bridge Seating



Bridge Aft Seating



Bridge Helm



Bridge Seating



Bridge Seating



Bridge Seating



Bridge Wet Bar and Seating



Bridge Wet Bar



Salon



Salon Entertainment



Salon Seating



Dinette



Galley



Galley



Lower Helm



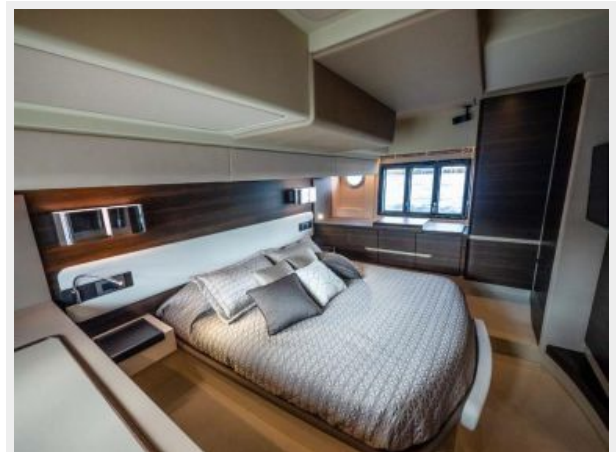
Lower Helm Electronics



Raymarine Engine Hours



Master Stateroom



Master Stateroom



Master Stateroom



Master Stateroom



Master Stateroom



Master Head/Shower



Master Head/Wash Basin



VIP Stateroom



VIP Stateroom



Guest Stateroom



VIP and Guest Staterooms



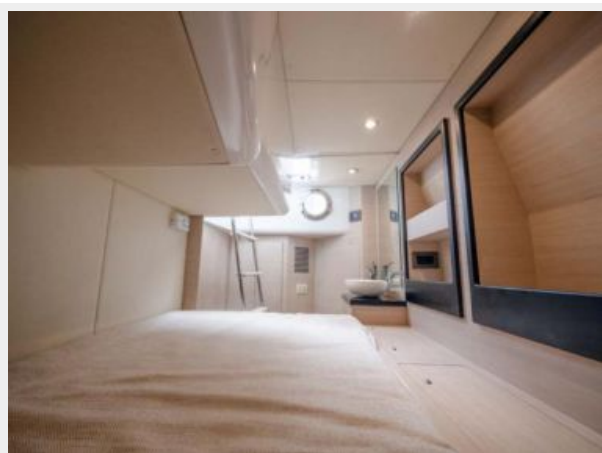
Guest Head



Guest Head



Crew Quarters



Crew Quarters



Engine Room



Engine Room



Engine Room



CONTACTS

Andrey Shestakov, leading yacht broker of the sales department of Shestakov Yacht Sales Inc. Shestakov Yacht Sales Inc., the official representative of the Miami/Fort Lauderdale FL headquarters.

Contact details

Email: andrey@shestakovyachtsales.com

Web: shestakovyachtsales.com/en/

Telephones

USA: +1(954)274-4435

Office hours

Monday – Saturday: **9:00 - 21:00** EDT

Sunday: **closed**

Address



Harbour Towne Marina, 850 NE 3rd St,
STE 213, Dania, FL 33004