

SPIRIT — SABRE YACHTS



Builder: SABRE YACHTS

Year Built: 1980

Model: Cruising/Racing Sailboat

Price: **PRICE ON APPLICATION**

Location: United States

LOA: 34' 0" (10.36m)

Beam: 10' 6" (3.20m)

Min Draft: 3' 11" (1.19m)

Max Draft: 7' 9" (2.36m)

Our experienced yacht broker, Andrey Shestakov, will help you choose and buy a yacht that best suits your needs **Spirit — SABRE YACHTS** from our catalogue. Presently, at Shestakov Yacht Sales Inc., we have a wide variety of yachts available on our sale's list. We also work in close contact with all the big yacht manufacturers from all over the world.

If you would like to buy a yacht **Spirit — SABRE YACHTS** or would like help answering any questions concerning purchasing, selling or chartering a yacht, please call **+1(954)274-4435**

TABLE OF CONTENTS

TABLE OF CONTENTS	2
SPECIFICATIONS	3
Overview	3
Basic Information	3
Dimensions	3
Speed, Capacities and Weight	4
Accommodations	4
Hull and Deck Information	4
Engine Information	4
DETAILED INFORMATION	5
Accommodations & Layout	5
Galley	5
Electronics/Navigation Equipment	5
Sails & Rigging	6
Mechanical	6
Electrical	6
Deck & Hull	6
Exclusions	7
Disclaimer	7
PHOTOS	8
CONTACTS	13
Contact details	13
Telephones	13
Office hours	13
Address	13

SPECIFICATIONS

Overview

- Nice sailing vessel at a great price! Perfect for racing and daysailing fun! Beautiful lines and sporting a fresh awlgrip paint job! Centerboard version gives you flexibility to point well under sail as well as gunkhole in your favorite anchorage. Sleeps 5 in air conditioned comfort. Nicely updated. Shoal draft centerboard 3'11" - 7'9"
- NEW Garmin Color EchoMap Plus 74CV GPS (New 2019)
- New Xantrex battery charger (2019)
- Fresh alwgrip hull and deck paint, Kiwi grip nonskid (2018)
- All thru hulls and seacocks replaced (2018)
- Complete bottom job (2018), blasted, epoxy barrier coated, antifouling paint
- Exhaust riser replaced with composite riser (2018)
- Electric fuel pump (2018)
- Rebuilt Volvo engine and transmission (2014), 500 hrs SOH
- Raymarine Autopilot (2014)
- Reverse cycle AC & heat (2014)

Basic Information

Category: Cruising/Racing Sailboat

Sub Category: Daysailer

Model Year: 1980

Year Built: 1980

Country: United States

Dimensions

LOA: 34' 0" (10.36m)

LWL: 25' 4" (7.72m)

Beam: 10' 6" (3.20m)

Min Draft: 3' 11" (1.19m)

Max Draft: 7' 9" (2.36m)

Speed, Capacities and Weight

Displacement: 11800 Pounds

Water Capacity: 76 Gallons

Holding Tank: 10 Gallons

Fuel Capacity: 30 Gallons

Accommodations

Total Cabins: 1

Sleeps: 5

Total Heads: 1

Hull and Deck Information

Hull Material: Fiberglass

Engine Information

Engines: 1

Manufacturer: Volvo

Model: MD-11C

Fuel Type: Diesel

DETAILED INFORMATION

Accommodations & Layout

- Accommodations for 5 adults
- Marine Air reverse cycle air conditioning (2014)
- V berth with filler, quarter berth and 2 bench settees
- Bulkhead mounted teak dining table, opens 1/2 and full width
- Traditional bench settees port and starboard with storage behind
- Nav desk to port of companionway with quarterberth
- U shaped galley to starboard of companionway
- Teak and holly sole
- Teak joinery and cabinet doors
- (2) Opening hatches
- (4) fixed portlights
- (4) Opening portlights
- Sliding companionway hatch
- New Jabsco manual toilet, never used (2018)

Galley

- U shaped galley
- Double SS sinks
- Hot and cold pressure water system
- Origo alcohol 2 burner stove and oven w/counter cover
- Frigoboat top loading refrigeration
- Cabinets, drawers and ample storage

Electronics/Navigation Equipment

- Garmin GPS color EchoMap Plus 74CV (2014)
- New transducer to install
- Raymarine Autopilot (2014)
- Standard Horizon VHF Radio
- Handheld VHF
- Datamarine depth gauge
- Compass
- Sony radio and CD player, speakers
- Navigation lights

Sails & Rigging

- Keel stepped mast
- Aluminum mast with single spreader
- Wire standing rigging
- Harken roller furling unit
- 110 Jib (1980) usable condition, new sheets
- Mainsail (1993) usable condition, new main halyard
- Wisker pole on mast
- Harken traveller on cabin top
- (2) Lewmar #43 primary winches
- (3) Lewmar #16 winches

Mechanical

- 23 hp Volvo MD-11C diesel engine, reported rebuilt by previous owner (2014) at 3543 hours, now 500 hrs SOH
- Transmission reported rebuilt (2014)
- Racor filter
- Fiberglass strut, cutlass bearing (2018)
- All new thruhulls and bronze seacocks (2018)
- Exhaust riser replaced with composite riser (2018)
- Electric fuel pump (2018)
- Jabsco manual toilet (2018)
- Y valve and holding tank
- Hot water heater
- Rule automatic bilge pump (2019)
- Whale gusher manual bilge pump

Electrical

- (2) Group 27 Gel house batteries (2017)
- (1) 12V start battery 120V AC panel
- Alternator
- Xantrex Tru Charge 40 A Battery charger (2019)
- Xantrex battery monitor
- Guest battery selector switch
- (2) 30 amp electrical inlets
- Shore power cords

Deck & Hull

- Anchor locker
- CQR Anchor with 30' chain and 250' rode (2018)
- Spare Danforth anchor
- Raw water washdown
- Deck cleats
- SS bow rail
- SS stanchions and double lifelines with side gates
- Teak toe rail
- SS stern rail
- SS swim ladder
- Teak cockpit table
- Self draining mesh Cockpit cushions
- Cockpit lockers
- Tan Bimini top and Mainsail cover (tired)
- Lifesling
- Lines and fenders
- PFD's
- Teak handrails
- Rubrail with SS strake
- Non skid deck
- Complete bottom job (2018) includes blasting, epoxy barrier coat and anti-fouling paint
- Centerboard
- Hull awlgrip paint (2018)
- Deck awlgrip paint and Kiwi grip non skid (2018)
- 9; Neptune roll up inflatable dingy with aluminum bottom (2017)
- 2.5 hp Mercury outboard (2019)

Exclusions

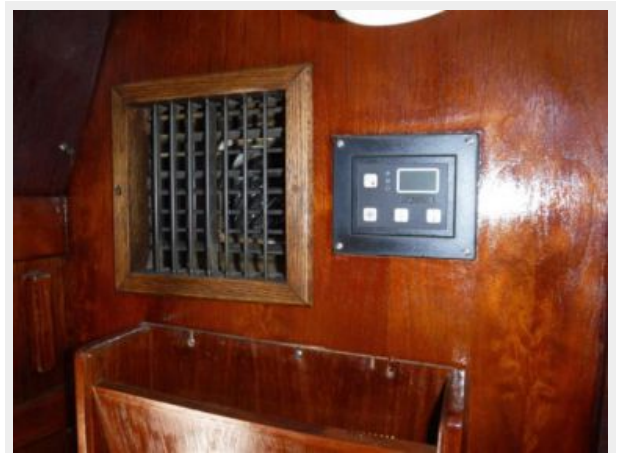
Owner's personal belongings.

Disclaimer

The Company offers the details of this vessel or yacht in good faith but cannot guarantee or warrant the accuracy of this information nor warrant the condition of the vessel. A buyer should instruct his representatives, agents, or his surveyors, to investigate such details as the buyer desires validated. This vessel or yacht is offered subject to prior sale, price change, or withdrawal without notice.

PHOTOS











CONTACTS

Andrey Shestakov, leading yacht broker of the sales department of Shestakov Yacht Sales Inc. Shestakov Yacht Sales Inc., the official representative of the Miami/Fort Lauderdale FL headquarters.

Contact details

Email: andrey@shestakovyachtsales.com

Web: shestakovyachtsales.com/en/

Telephones

USA: +1(954)274-4435

Office hours

Monday – Saturday: **9:00 - 21:00** EDT

Sunday: **closed**

Address



Harbour Towne Marina, 850 NE 3rd St,
STE 213, Dania, FL 33004