

CORDINA — BROWARD



Builder: BROWARD

Year Built: 1999

Model: Motor Yacht

Price: PRICE ON APPLICATION

Location: United States

LOA: 88' 0" (26.82m)

Beam: 20' 0" (6.10m)

Max Draft: 6' 4" (1.93m)

Cruise Speed: 15 Kts. (17 MPH)

Max Speed: 20 Kts. (23 MPH)

Our experienced yacht broker, Andrey Shestakov, will help you choose and buy a yacht that best suits your needs **Cordina — BROWARD** from our catalogue. Presently, at Shestakov Yacht Sales Inc., we have a wide variety of yachts available on our sale's list. We also work in close contact with all the big yacht manufacturers from all over the world.

If you would like to buy a yacht **Cordina — BROWARD** or would like help answering any questions concerning purchasing, selling or chartering a yacht, please call **+1(954)274-4435**

TABLE OF CONTENTS

| | |
|------------------------------|----|
| TABLE OF CONTENTS | 2 |
| SPECIFICATIONS | 7 |
| Overview | 7 |
| Basic Information | 7 |
| Dimensions | 7 |
| Speed, Capacities and Weight | 8 |
| Accommodations | 8 |
| Hull and Deck Information | 8 |
| Engine Information | 8 |
| DETAILED INFORMATION | 9 |
| Easy Flow of the Yacht | 9 |
| Accommodations | 10 |
| Ample Crew Quarters | 10 |
| Recent Upgrades | 10 |
| Pilothouse Equipment | 11 |
| Electronics | 11 |
| Deck and Equipment | 12 |
| Power Systems | 12 |
| Mechanical Support | 13 |
| Safety | 14 |
| Mechanical Disclaimer | 14 |
| Disclaimer | 14 |
| Exclusions | 14 |
| Disclaimer | 14 |
| PHOTOS | 15 |
| Bow | 15 |
| Starboard Bow | 15 |
| Port Bow view | 15 |

| | |
|----------------------------------|----|
| Pilothouse Helm | 15 |
| Pilothouse Helm | 15 |
| Pilothouse Helm | 15 |
| Pilothouse | 16 |
| Pilothouse | 16 |
| Main Salon | 16 |
| Main Salon | 16 |
| Main Salon | 16 |
| Main Salon | 16 |
| Main Salon | 17 |
| Main Salon Dining | 17 |
| Main Salon Dining | 17 |
| Galley and Dinette | 17 |
| Galley | 17 |
| Galley | 17 |
| Dinette | 18 |
| Galley | 18 |
| Galley | 18 |
| Galley and Dinette | 18 |
| Day Head | 19 |
| Day Head | 19 |
| Master Stateroom | 19 |
| Master Stateroom | 19 |
| Master Stateroom | 19 |
| Master Stateroom | 19 |
| Master Stateroom | 20 |
| Master Stateroom | 20 |
| Master Stateroom Head | 20 |
| Master Stateroom Head and Shower | 20 |

| | |
|---|----|
| Master Stateroom Head | 21 |
| Master Stateroom Head and Shower | 21 |
| Port Guest Stateroom | 21 |
| Port Guest Stateroom | 21 |
| Port Guest Stateroom | 22 |
| Port Guest Stateroom | 22 |
| Port Guest Stateroom Head | 22 |
| Port Guest Stateroom | 22 |
| Port Guest Stateroom Head and Shower | 23 |
| Starboard Guest Stateroom | 23 |
| Starboard Guest Stateroom | 23 |
| Starboard Guest Stateroom | 23 |
| Starboard Guest Stateroom | 23 |
| Starboard Guest Stateroom | 23 |
| Starboard Guest Stateroom Head and Shower | 24 |
| Starboard Guest Stateroom Head | 24 |
| Crew Quarters | 24 |
| Crew Quarters | 24 |
| Crew Quarters | 25 |
| Crew Quarters Head | 25 |
| Crew Quarters Head | 25 |
| Crew Quarters Head and Shower | 25 |
| Washer and Dryer | 26 |
| Port Foredeck | 26 |
| Foredeck and Windlass | 26 |
| Starboard Foredeck | 26 |
| Windlass and Foredeck Seating | 27 |
| Foredeck Seating | 27 |
| Port Side Deck | 27 |

| | |
|----------------------------------|----|
| Starboard Side Deck | 27 |
| Flybridge Helm Deck | 28 |
| Flybridge Helm and Electronics | 28 |
| Flybridge Helm and Electronics | 28 |
| Flybridge Helm Deck | 28 |
| Helm Seat | 28 |
| Flybridge Helm Deck | 28 |
| Flybridge Port Seating | 29 |
| Flybridge Seating | 29 |
| Flybridge Starboard Seating | 29 |
| Flybridge Port Seating | 29 |
| Flybridge looking aft | 29 |
| Radar Arch and Davit | 29 |
| Radar Arch and Davit | 30 |
| Radar Arch and Davit | 30 |
| Cockpit to Port | 30 |
| Cockpit Seating and Spiral Steps | 30 |
| Cockpit to Starboard | 31 |
| Cockpit | 31 |
| Cockpit Seating | 31 |
| Cockpit Seating | 31 |
| Engine Room | 31 |
| Engine Room | 31 |
| Engine Room | 32 |
| Engine Room | 32 |
| Engine Room | 32 |
| Engine Room | 32 |
| CONTACTS | 33 |
| Contact details | 33 |

| | |
|--------------|----|
| Telephones | 33 |
| Office hours | 33 |
| Address | 33 |

SPECIFICATIONS

Overview

CORDINA is your chance of a lifetime to own a custom-built American Aluminum Motor Yacht that has stood the test of time! Mr Denison knew how to build yachts and has dominated the custom large yacht market, for almost two decades. Browards hold a lot of fuel, water, and with a range of over 2000 miles, can cruise up and down the east coast on one tank...or cruise the islands all winter on one fueling. With stabilizers and the strong aluminum hull, you will not have the creaking that's typical of a fiberglass hull. Plus, with all locally sourced parts and components, there is never an issue with replacements.

This yacht has a full beam salon and guest staterooms that are located separately from the owners full beam stateroom. Crew quarters are forward of the "eat in" galley. A full walk-in engine room features the best equipment centered around Cat 3412 engines and Northern light generators. Browards truly are the best value on the Motor Yacht market today! With a current replacement cost estimated at over \$9million, you can have the same yachting experience for a fraction of the cost, without the huge depreciation. Heck, even some new 50ft Center Consoles sell for more! This is an exceptional opportunity to have that mini-megayacht experience, but wth the ability to get dock space most anywhere!

Basic Information

| | |
|------------------------|-------------------------|
| Category: Motor Yacht | Sub Category: Flybridge |
| Model Year: 1999 | Year Built: 1999 |
| Country: United States | Vessel Top: Hardtop |
| Fly Bridge: Yes | Cockpit: Yes |

Dimensions

| | |
|----------------------|--------------------------|
| LOA: 88' 0" (26.82m) | LWL: 78' 3" (23.85m) |
| Beam: 20' 0" (6.10m) | Max Draft: 6' 4" (1.93m) |

Speed, Capacities and Weight

Cruise Speed: 15 Kts. (17 MPH)

Cruise Speed RPM: 1800 Kts.

Max Speed: 20 Kts. (23 MPH)

Max Speed RPM: 2300 Kts.

Water Capacity: 1050 Gallons

Holding Tank: 600 Gallons

Fuel Capacity: 6260 Gallons

Accommodations

Total Cabins: 5

Total Heads: 6

Crew Cabin: 1

Hull and Deck Information

Hull Material: Aluminum

Engine Information

Engines: 2

Manufacturer: Caterpillar

Model: 3412C

Engine Type: Inboard

Fuel Type: Diesel

DETAILED INFORMATION

Easy Flow of the Yacht

Coming aboard the aft deck via the Marquipt boarding ladder, the yacht seems much bigger than its 88 feet! The aft deck has a custom teak table and bench seating as well as a full fridge and TV for aft deck dining or cocktails. The flybridge can be accessed from aft deck by spiral staircase steps.

Moving forward into the salon through the aft entry door, you note that the interior is very well appointed with tasteful furnishing and interior finishes. To port is a sofa that seats four, along with two swivel barrel chairs and a glass coffee table. To forward is seating for six at a formal glass dining table with 6 chairs. On the forward bulkhead is a bar with beautifully carved custom cabinetry and storage.

Moving forward on the port side is a custom day head and to starboard is the private entry to the Master stateroom below. The MSR suite features king-size berth, walk-in closets, flatscreen TV and lots of custom cabinetry. Just forward of the suite are separate His and Her heads with showers. There is an additional washer and dryer in this area. From the MSR, there is also access to the forward deck through sliding glass doors on each side.

Again moving forward on the port side is the hallway to the pilothouse which is accessible on either port or starboard side. Then you enter the galley with an eat-in dinette to port. For quick bites or breakfast, there is barstool seating at the center island prep station with sink. Galley is equipped with stove and oven, enormous side-by-side refrigerator/freezer on the forward wall and a wine cooler and shelving is on the aft wall.

Forward of Galley down stairs, is the crew quarters with washer and dryer and the 4th stateroom or extra crew quarters, and two separate heads with showers.

On the starboard aft side of the salon, there is an entertainment area and desk. Just forward to the starboard is the stairwell that leads down to the two guest stateroom suites with private heads, and access to the spacious, full stand-up engine room located on the forward bulkhead wall.

Back up on deck level, the entrance to the wheelhouse is midship where the Captain can drive the yacht in inclement weather with full Helm controls. Bench seating is provided on this level for guests.

Going up the stairs you enter the very spacious flybridge with bench helm seating for four. Flybridge features a wet bar with refrigerator and ice maker. Entertain and relax with two custom teak tables and very large L-shaped bench seats with beautiful blue cushions.

You owe it to yourself to see this exceptional yacht personally. Call Listing Broker now to arrange your showing,

Accommodations

Master Stateroom:

Below Amidship: The Master stateroom is located separately with its own entrance. It is full beam with a walkaround King-sized berth. The MSR suite features a settee to starboard and dressing table to port, and twin walk-in cedar-lined closets. The Heads feature "his and her" separate showers and toilets. The stateroom also features a built-in refreshment station with a coffee maker, microwave and mini refrigerator/freezer. The MSR has separate air conditioning controls and units. The entertainment center features a flatscreen TV, AM/FM Stereo with i-Pad docking station. All lighting has dimmer switches and the suite features two walk-in closets (one lockable) and more than ample drawer storage space.

Port and Starboard Staterooms Below and aft of the engine room:

Both aft guest suites have a separate private entrance. Inside, you will find a walkaround queen berth with spacious ensuite Heads with stall showers and freshwater flush toilets. Both have flatscreen TV's, DVD players, AM/FM stereos, i-Pad docking stations and cedar-lined closets, as well as separate air-conditioning controls and units. These guest suites are each as big as the mastersuite on many other 60ft yachts!

Forward State Room:

The forward stateroom can be used for extra crew or as an additional Guest stateroom, depending on the owners preference. It has a double berth, cedar-lined hanging locker, storage drawers and its own TV, AM/FM stereo and head with shower.

Ample Crew Quarters

Crew Quarters:

Crew is quartered forward of the galley and has over and under twin bunks, TV/Stereo, cedar-lined hanging locker, storage drawers and a separate Head with full stand-up shower. More space than in any European crew quarters of a yacht of similar size.

Recent Upgrades

- Bottom Job October 2018
- New Exterior paint and striping 2017 and more touch up's 2019
- Top and Lighting system Flybridge 2015
- Underwater lights 2015
- NAIAD stabilizers serviced May 2017
- 4000 Hour service and inspection by Charlie Smithwich April 2017
- Interior updated 2017

- A/C system new 2016
- New toilets throughout the boat 2016
- New Sewage Macerator pump and system refit June 2017
- Offshore WIFI telephone and internet system May 2017
- New Mattress in Master state room May 2017
- New wallpaper in galley, saloon and master stateroom May 2017
- New furniture in saloon May 2017

Pilothouse Equipment

- 24" Stainless steel ships wheel
- 3 Windshield washer/wiper controls
- Caterpillar electronic controls with alarm panels and start and stop switches
- Windshield defogger control
- 10" DVR monster linked to the engine room
- 10X Zoom dome camera
- Nobeltec Chart Plotter
- ACR 1000 spotlight
- Alarm panel for bilge alarms
- Engine room heat detector alarm (Ultra safely systems)
- Fuel Gauges
- Overhead mini halogen lights
- Centerline padded helm seat that slides back and forth to optimize room
- Large drawers and foot rest below helm
- 2 Locker shelves
- Fire alarm sensor
- Chelsea brass clock and barometer
- Pull out drawers for computer keypad

Electronics

- Radars; Furuno FR811/6 10 KW 72 mile radar
- Danforth Compass
- Robertson AP 300X Auto pilot
- Furuno RD 30 Depth sounder and Furuno FI 50
- Nobeltec CPU Chart plotter
- Robertson RI-135 rudder angle indicator
- Ships computer
- Link wind speed and log
- KVH Tracvision II Stabilized DDS system with 2 receivers, KVH Sat Com with Fax option Model K-3
- Panasonic KX T616 telephone and intercom system

- M-12 2 Com VHF
- Motorola M-600B cell phone with antenna

Deck and Equipment

- 10' Custom Passarelle with 2 handrails for Med mooring stern boarding.
- Aluminum Swim platform with teak overlay.
- Locker on swim platform with hot and cold water.
- Marquipt 6 step boarding ladder.
- Deck lighting.
- Stainless steel railings.
- Spare SS plow anchor with 160 ft of 1" line.

Foredeck:

- 3000 LB Ideal windless with foot controls.
- SS Anchor chute, 2 SS hawes eyes.
- Forfjord 210lb anchor with 36- go 1/2" chain and ideal chain stripper.
- 2 Buell Stombos 12" triplex horns (air).
- Lighting on the bow 500W.

Boat Deck:

- Nautical Structures EZ-1500-3 davit out base for tender lifting.
- Fresh air intakes for engines as to minimize salt in the engine room.
- Fresh water spigot.
- Flag and mast.

Flybridge Equipment:

- New custom hardtop (new 2017).
- Island Bar with Kohler SS ink and fixtures, Icemaker, under sounder U line refrigerator/freezer, Weber BBQ.
- 2 Reclining sun lounges.
- 33" Outdoor TV.
- Stereo speakers with controls.
- Four Person helm seats.
- Windshield and frame.
- Center line helm station.
- 30" Edison SS wheel

Power Systems

- 2- Northern Lights 40 KW Generators S 6050 hours P 5450
- A-Sea Power Converter for 50Hz or 60 HZ power
- Ships Power: 12V/24V DC; 100V/220V-AC
- Sentry 40 Amp 12 V Consta-volt Battery Chargers (dedicated to house and generators)
- Sentry 50 Amp Vanner battery equalizer-engines
- Perko battery shut-off switches-engines
- 2-8D Lead acid 165 amp generator batteries
- 2-12D Lead acid batteries dedicated to electronics
- Sentry 40 Amp 12 V battery charger dedicated to electronics

Mechanical Support

- Naiad 30 Hp hydraulic Bow thruster with PTO off port generator with proportional controls
- Naiad M11 #302 stabilizers with dual Jabsco pumps and 9 sq ft fins (seals and rams new 2011)
- New 6/2015 Aqua 10 Ton Air Conditioning System (2 new 5 ton chillers)
- New 2014 1800 GPD FCI MAXQ Watermaker and flush options
- Triple Racor fuel filter for each generator
- Racor 1000 fuel filters for each generators
- Leeson fuel transfer system
- Fill rite meter for fuel filling
- Leeson ^ point oil change system
- 2 Hydraulic Power assist steering with 2 Jabsco cooling pumps May 2017
- Custom High speed rudders
- Electric heat strips at all Ari handlers for interior heaters
- 2-3/4 HP Raw water AC cooling pumps
- 2-1/2 HP Chiler circulating pump for A/C system
- Oberdorfer 110 black water pump out pump
- Deck fitting for black water pump out
- Emergency fuel priming and transfer pump
- 2 Aqua pure drinking water filters
- PAR on demand shower pumps
- 110 Head hunter fresh water pump with expansion tank
- ER fresh water spigot with hose
- Dock water inlets with pressure regulators
- 6 PAR DC bilge pumps 2 in Engine room; 2 Amidship, 1 in VIP and 1 in Crew
- 110V bilge pump in the engine room keel
- 2-1/2 HP Air compressors in the lazzerette
- Fire Control System-Dual Kiddie CO2 with heat sensors in the ER
- Emergency engine driven crash pumps on both engines
- 5 Blade bronze propellers
- Fuel tanks (day tank 3850 gal; wing tanks on port and starboard 1200 gal each) Total 6250 Gal

- Lube oil tank 125 gallons (aluminium)
- Waste oil tank 125 gallons (aluminum)
- (2) 40 gallon hot water tanks

Safety

- Zodiac 12 man liferaft
- Revere 6 man Solas life raft
- Life Ring with smoke/light attachment
- EPIRB with hydrostatic release May 2017
- New bilge pumps 2017
- Fire system recertified 2019

Mechanical Disclaimer

Engine hours are as of the date of the original listing and are a representation of what the listing broker is told by the owner and/or actual reading of the engine hour meters. The broker cannot guarantee the true hours. It is the responsibility of the purchaser and/or his agent to verify engine hours, warranties implied or otherwise and major overhauls as well as all other representations noted on the listing brochure.

Disclaimer

The Company offers the details of this vessel in good faith but cannot guarantee or warrant the accuracy of this information nor warrant the condition of the vessel. A buyer should instruct his agents, or his surveyors, to investigate such details as the buyer desires validated. This vessel is offered subject to prior sale, price change, or withdrawal without notice.

Exclusions

Owner's personal belongings.

Disclaimer

The Company offers the details of this vessel or yacht in good faith but cannot guarantee or warrant the accuracy of this information nor warrant the condition of the vessel. A buyer should instruct his representatives, agents, or his surveyors, to investigate such details as the buyer desires validated. This vessel or yacht is offered subject to prior sale, price change, or withdrawal without notice.

PHOTOS

Bow



Starboard Bow



Port Bow view



Pilothouse Helm



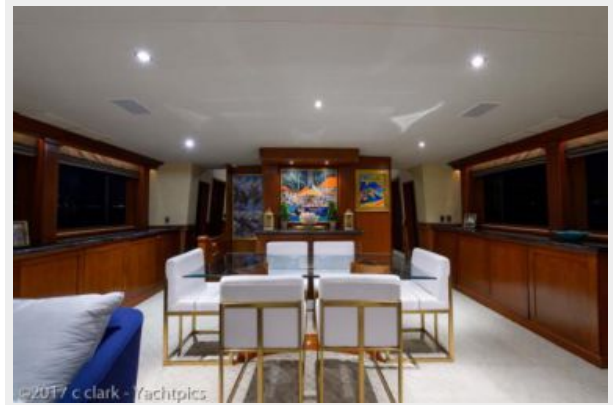
Pilothouse Helm

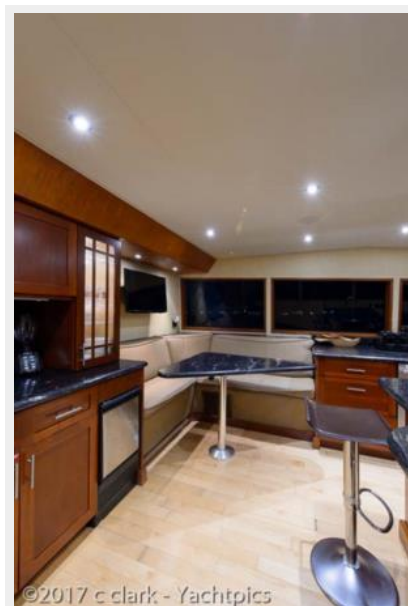


Pilothouse Helm



Pilothouse**Pilothouse****Main Salon****Main Salon****Main Salon****Main Salon**

Main Salon**Main Salon Dining****Main Salon Dining****Galley and Dinette****Galley****Galley**

Galley**Dinette****Galley****Galley and Dinette**

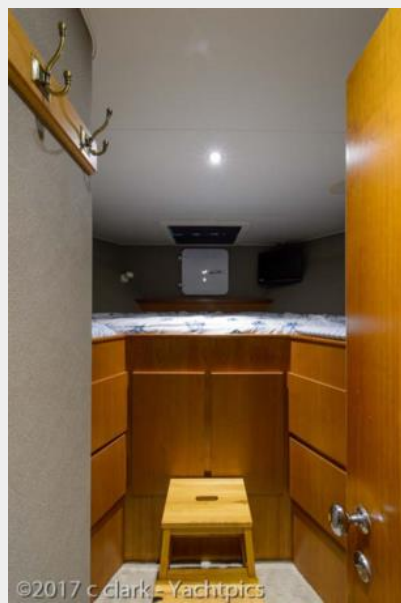
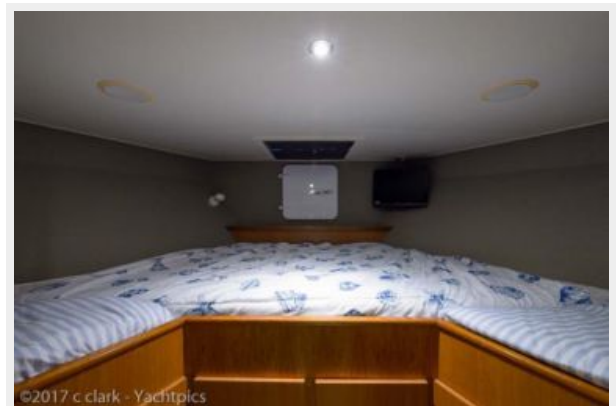
Day Head**Day Head****Master Stateroom****Master Stateroom****Master Stateroom****Master Stateroom**

Master Stateroom**Master Stateroom****Master Stateroom Head****Master Stateroom Head and Shower**

Master Stateroom Head**Master Stateroom Head and Shower****Port Guest Stateroom****Port Guest Stateroom**

Port Guest Stateroom**Port Guest Stateroom****Port Guest Stateroom Head****Port Guest Stateroom**

Port Guest Stateroom Head and Shower**Starboard Guest Stateroom****Starboard Guest Stateroom****Starboard Guest Stateroom****Starboard Guest Stateroom****Starboard Guest Stateroom**

Starboard Guest Stateroom Head**Starboard Guest Stateroom Head and Shower****Crew Quarters****Crew Quarters**

Crew Quarters**Crew Quarters Head****Crew Quarters Head****Crew Quarters Head and Shower**

Washer and Dryer



Port Foredeck



Foredeck and Windlass



Starboard Foredeck



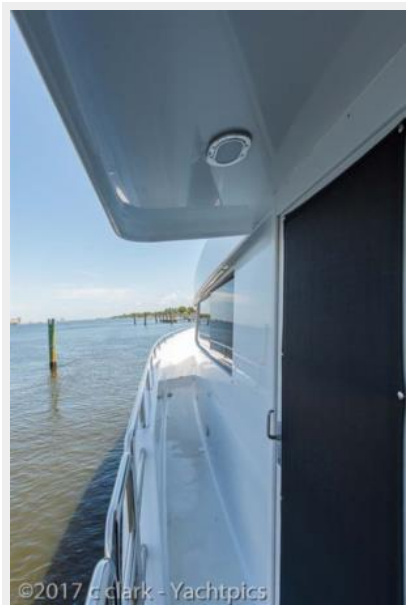
Windlass and Foredeck Seating



Foredeck Seating

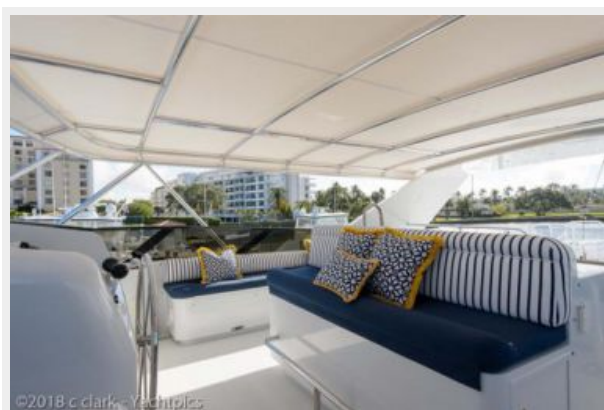


Port Side Deck



Starboard Side Deck



Flybridge Helm Deck**Flybridge Helm and Electronics****Flybridge Helm and Electronics****Flybridge Helm Deck****Helm Seat****Flybridge Helm Deck**

Flybridge Port Seating**Flybridge Seating****Flybridge Starboard Seating****Flybridge Port Seating****Flybridge looking aft****Radar Arch and Davit**

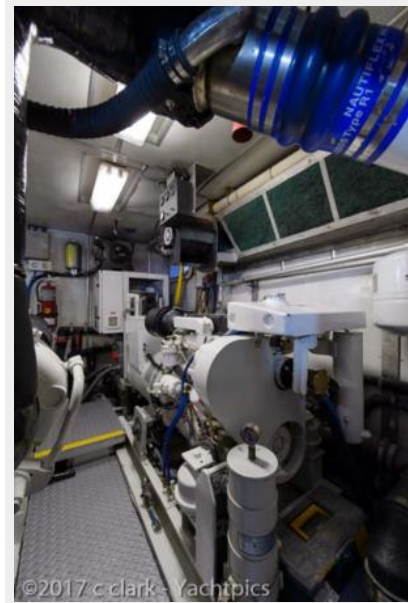
Radar Arch and Davit**Radar Arch and Davit****Cockpit to Port****Cockpit Seating and Spiral Steps**

Cockpit**Cockpit to Starboard****Cockpit Seating****Cockpit Seating****Engine Room****Engine Room**

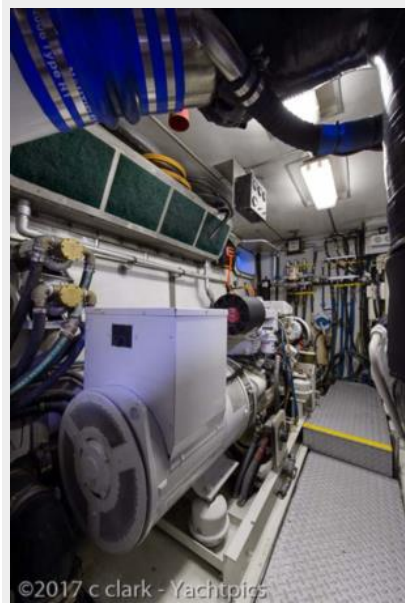
Engine Room



Engine Room



Engine Room



Engine Room



CONTACTS

Andrey Shestakov, leading yacht broker of the sales department of Shestakov Yacht Sales Inc. Shestakov Yacht Sales Inc., the official representative of the Miami/Fort Lauderdale FL headquarters.

Contact details

Email: **andrey@shestakovyachtsales.com**

Web: shestakovyachtsales.com/en/

Telephones

USA: **+1(954)274-4435**

Office hours

Monday – Saturday: **9:00 - 21:00 EDT**

Sunday: **closed**

Address



Harbour Towne Marina, 850 NE 3rd St,
STE 213, Dania, FL 33004