

DESTINY — MERRITT BOAT WORKS



Судостроитель:
MERRITT BOAT WORKS

Год постройки: 2011

Модель: Sport Yacht

Цена: ЦЕНА ЯХТЫ ПО ЗАПРОСУ

Местонахождение: United States

Длина общая: 86' 0" (26.21m)

Ширина: 21' 0" (6.40m)

Макс. осадка: 5' 8" (1.73m)

Крейс. скорость: 30 Kts. (35 MPH)

Макс. скорость: 38 Kts. (44 MPH)

Купить **DESTINY — MERRITT BOAT WORKS** а также выбрать подходящую вам яхту из нашего каталога яхт вам поможет опытный яхтенный брокер Андрей Шестаков. На сегодняшний день компания **Shestakov Yacht Sales Inc.** имеет большое количество яхт в собственном списке продаж, а также тесно сотрудничает со всеми крупными яхтенными производителями по всему миру.

Для того чтобы купить яхту **DESTINY — MERRITT BOAT WORKS** а также проконсультироваться по любому вопросу связанному с покупкой, продажей, чартером яхт позвоните по телефону **+7(918)465-66-44**.

ОГЛАВЛЕНИЕ

ОГЛАВЛЕНИЕ	2
ХАРАКТЕРИСТИКИ	5
Обзор	5
Основная информация	5
Размеры	5
Скорость, вместимость и масса	6
Размещение	6
Корпус и палуба	6
Информация о двигателе	6
ПОДРОБНОЕ ОПИСАНИЕ	7
Highlights	7
Walk-Through	7
Main Cabin	8
Accommodations	8
Companionway and Laundry Equipment	10
Electronics and Navigation Equipment	10
Electrical Equipment Details	11
Engine and Mechanical Details	12
Deck and Hull	12
Cockpit and Fishing Equipment	13
Enclosed Bridge Deck	13
Tower	14
Tender	14
Security System	14
Fire Fighting and Safety Equipment	14
Exclusions	15
Broker's Remarks	15
Исключения	15

Отказ от ответственности	15
ФОТОГРАФИИ	16
Salon - looking forward to Galley/Dinette	16
Salon - Entertainment Center to Port	16
Salon - looking aft from Galley/Dinette	16
Companionway - looking aft	16
Companionway - looking forward	16
Companionway	16
Master Stateroom - Port	17
Master Stateroom	17
Master Bath	17
Master Bath	17
VIP Stateroom - Forward	17
VIP Bath	17
Crew/Guest Stateroom - Port	18
Enclosed Bridge Helm	18
Enclosed Bridge Helm	18
Cockpit	18
Fighting Chair / Cockpit	18
Cockpit / Mezzanine Merritt	18
Fighting Chair	19
Cockpit - view from Bridge	19
Aft - View up to Tower	19
Ladder to Tower Aft	19
Aft Bridge	19
Aft Bridge Controls	19
Electrical Panels	20
Electric Room and Pantry	20
Engine Room	20

Engine Room	20
Engine Room	20
Engine Room	20
Engine Room	21
Engine Controls	21
КОНТАКТЫ	22
Контактная информация	22
Телефоны	22
Время работы	22
Адрес	22

ХАРАКТЕРИСТИКИ

Обзор

DESTINY provides the ultimate in comfort and styling in a large, custom, enclosed bridge sportfishing yacht. Launched in 2011, she is the first in the 86' series and one of only two built with the enclosed bridge.

DESTINY has been kept under cover at Merritt's since new and lightly used, with only 550 hours on 2400 hp MTU engines.

DESTINY features three staterooms, each with ensuite head and shower, and separate crew quarters with ensuite head and shower accessible through the engine room and pump room.

DESTINY is the only Enclosed Bridge 86' on the market. This 86' Merritt currently available for purchase on the brokerage market and represents an outstanding opportunity!

Основная информация

Тип судна: Sport Yacht

Подкатегория: Катер для спортивной рыбалки

Модельный год: 2011

Год постройки: 2011

Страна: United States

Верх: Enclosed

Открытая палуба мостика: Да

Размеры

Длина общая: 86' 0" (26.21m)

Ширина: 21' 0" (6.40m)

Макс. осадка: 5' 8" (1.73m)

Скорость, вместимость и масса

Крейс. скорость: 30 Kts. (35 MPH)

Крейсерская скорость поворота: 1900 Kts.

Макс. скорость: 38 Kts. (44 MPH)

Макс. скорость поворота: 2450 Kts.

Водоизмещение: 110000 Pounds

Вместимость воды: 500 Gallons

Вместимость сточного бака: 185 Gallons **Объем топливного бака:** 3950 Gallons

Размещение

Всего кают: 4

Всего ком. состава: 5

Корпус и палуба

Материал корпуса: Composite

Дизайнер корпуса: Merritt's Boat & Engine Works

Дизайнер экстерьера: Merritt's Boat & Engine Works

Дизайнер интерьера: Merritt's Boat & Engine Works

Информация о двигателе

Двигатели: 2

Производитель: MTU

Модель: 16V2000 M93

Тип двигателя: Inboard

Тип топлива: Diesel

ПОДРОБНОЕ ОПИСАНИЕ

Highlights

- Pedigreed custom sportfish
- Beautiful book-matched teak interior joinery
- Enclosed bridge
- Mezzanine seating with air conditioning in cockpit
- Jack Hopewell tower
- Day head
- 18' Maverick HPX-V flats boat on bow

Walk-Through

Entering the Salon from the air conditioned Mezzanine deck, the Day Head is to port and an L-shaped leather sofa is starboard with rod and reel storage underneath and custom teak coffee table.

Forward of the sofa is the Dinette with seating for four. Three bar chairs facing the Galley are to port. The spacious Galley is equipped with four under-counter Sub-Zero refrigerated drawers and two freezer drawers, cocktail ice machine, dishwasher, and Miele induction range and convection oven.

Forward of the Galley is the very large walk-in Electric Room and Pantry with ample storage for extended cruising. The companionway stairs are starboard leading down to the Crew Quarters on the port side. Forward in the companionway are storage closets and the Laundry center. To port is the Master Stateroom with walk-around queen bed with storage underneath and "his and hers" nightstands. Three large hanging closets provide ample room for clothes. The ensuite bathroom is forward with marble countertops and glass tile flooring.

Continuing forward down the companionway is the Starboard Guest Stateroom with over/under bunks and hanging locker. The ensuite head and shower are forward.

All the way forward is the VIP Stateroom with walk-around bed and ensuite head and shower forward.

The spacious Cockpit is equipped with seating for four on the air conditioned Mezzanine with a large teak armrest /drink box. Tackle storage is under the seating and cockpit controls are underneath on the port side. Two large freezers and a large refrigerator are housed in the Mezzanine deck and there is a large storage area under the hinged steps that lead up to the Mezzanine.

The varnished teak Release fighting chair has a built-in rocket launcher and offset stanchion. Under-gunnel lockers provide room for gaffs and cleaning equipment.

A large spiral staircase leads up from the Mezzanine deck to the Bridge Deck with full controls for fishing on the starboard side, aft of the enclosed bridge.

Entering the Enclosed Bridge, to port is a sink and under-counter refrigerator and freezer drawers and storage drawers. To starboard is an L-shaped lounge with granite and teak table top. A large electronics dash houses four 19" VEI monitors and myriad electronics. A leather Crown helm chair is on centerline, large leather bench seats are both port and starboard each with large storage drawers below.

Main Cabin

SALON:

- L-Shaped leather sofa
- Rod and reel storage beneath sofa
- Custom teak coffee table
- 3 Pedestal bar stools at Galley counter
- Recessed overhead lighting

GALLEY:

- Teak-trimmed granite countertops
- 4 Sub-Zero under-counter pull-out refrigerator drawers
- 2 Sub-Zero under-counter pull-out freezer drawers
- KitchenAid cocktail ice machine
- Dishwasher
- Miele 4-burner cooktop induction range
- Miele convection oven
- Sharp convection/microwave oven
- Cabinets and drawers for storage
- Large pantry

DINETTE:

- Starboard. opposite Galley
- Teak/upholstered bench seating for 4
- Teak-trimmed granite pedestal table

DAY HEAD:

- Aft and port in the Salon

Accommodations

MASTER STATEROOM:

- Walk-around queen bed
- Storage under bed
- "His and Hers" built-in nightstands with drawers
- Upholstered headboard
- Wall-mounted lamps above each nightstand
- Recessed lighting in overhead and above headboard
- Built-in vanity with drawers, mirror and seat
- 3 Hanging closets for clothes
- TV in cabinetry, opposite bed
- Drawer storage below TV

EN SUITE BATH:

- Marble countertops
- Vanity with sink and storage and mirrored medicine cabinet
- Glass tile flooring
- Teak-trimmed shower door
- Headhunter toilet
- Recessed lighting in overhead

GUEST STATEROOM - STARBOARD:

- Upper and lower twin berths
- Recessed lighting in overhead
- Hanging locker and drawer storage
- TV
- En suite bath with vanity and sink, stall shower and Headhunter toilet

VIP STATEROOM - PORT:

- Walk-around queen bed
- Nightstands with drawers
- Recessed lighting in overhead and behind bed
- Cabinetry and drawers for storage

VIP EN SUITE BATH:

- Marble countertops
- Vanity with sink and storage and mirrored medicine cabinet
- Teak-trimmed shower door
- Headhunter toilet
- Recessed lighting in overhead

CREW QUARTERS:

- Upper and lower bunks
- Recessed lighting
- Watertight door/access to Engine Room and Pump Room

Companionway and Laundry Equipment

- Companionway stairs forward of Galley
- Access to crew quarters
- Storage closets, forward
- Whirlpool stacked washer and dryer, forward
- Access to Owner's and Guest accommodations

Electronics and Navigation Equipment

A/V:

- Main A/V: NAD - Crestron
- Audio System - NAD VISO 5
- Satellite TV - KVH system with DirecTV
- TVs - 8 total
- DVD Players - 7 total
- SatCom
- Ship's Printer - HP Office Jet Pro 6978

ENCLOSED BRIDGE:

- Radar #1: Furuno 25 kW - 96nm
- Radar #2: Furuno 6 kW - 64nm
- Autopilot: Simrad AP50
- GPS #1: Furuno
- GPS #2: Garmin
- Plotter Software: Nobeltec Trident Time Zero
- Depth/Video Sounders: Furuno FCV-1200L
- Nightvision: Ocean View
- Spotlight: Carlisle & Finch
- Monitors: 4 x VEI -19" with VEI switching
- Compasses: Ritchie
- VHF: 2 x Icom IC-M604
- AIS: Furuno FA-150
- Telephone System: Panasonic
- Bow Thruster Controls: Muir
- Trim Tabs: Bennett
- Rudder angle: Jastram rudder angle and rudder order displays

- Multi-display: Furuno RD-30
- ADDF: Simrad Taiyo TD-L1550 A
- TV: Samsung 26"

ADDITIONAL EQUIPMENT ON ENCLOSED BRIDGE:

- 3 Windshield wipers
- Windshield defroster
- Fuel gauges
- Fuel transfer switches
- Water gauge
- Hydraulic outrigger switches
- Bilge indicators/alarms
- 2 Bridge air conditioning units
- Overhead lights and speakers
- 8 Storage drawers
- Stainless steel freshwater sink
- Refrigerator and freezer drawers
- L-shaped settee with table and storage under seats
- 2 Built-in leather helm seats
- Crown Mariner helm seat

AFT BRIDGE HELM:

- Steering and control station, starboard aft, with bow thruster controls in handles
- VEI 12" monitor
- Furuno NavNet 3D controller
- Furuno RD-30
- Bar stool-type seat behind helm
- Aft-facing seat with fold-out footrest
- 2 Miya Epoch US-9R electric teaser reels behind sliding doors in overhead
- 9 Rod holders across aft bridge rail

Electrical Equipment Details

GENERATORS:

- Twin 38 kW Northern Lights generators
- Hours: Port: 460 Stbd: 541 (as of July 2019)
- Fuel consumption: 3 GPH
- Shore Power: 2 x 100-amp Single phase / 240 Volts / 60 hz with retractors and Atlas shore power converters

BATTERIES:

- Main Engines: 2 x Odyssey 24V
- Generators Starting: 2 x Odyssey 24V
- General Service: Odyssey 24V
- Emergency: Odyssey 24V

A/C SYSTEM:

- MarineAir chilled water air conditioning system

Engine and Mechanical Details

ENGINES:

- Twin 2400 hp MTU diesels, 2011, model 16V2000 M93
- Hours: Port: 544; Stbd: 535 (as of July 2019)
- Cruising Speed: 30 kts @ 1900 RPM
- Max Speed: 38 kts @ 2450 RPM
- 6-Blade NiBral propellers

TANKS:

- 4 Aluminum fuel tanks hold a combined 3950 gallons (approx)
- 2 Fiberglass-wrapped plastic fresh water tanks hold a combined 500 gallons (approx)
- 185-gallon capacity holding tank

ADDITIONAL EQUIPMENT:

- Watermakers: 2 x Watermakers, Inc., model WMS 1950
- Bow Thruster: Quantum hydraulic
- Steering System: Jastram
- Fuel Separators/Filtration: 6 x Racor, 2 x Algae-X
- Fresh Water System: Headhunter, Inc.
- Bilge Water System: Rule - Arid bilge system
- Air Compressor: Werther Int'l.
- Water Heater: 2 x Seaward 20-gallon tanks
- Head System: 5 x Headhunter Inc. toilets with fresh water flush

Deck and Hull

- Anchor Windlass System: Muir Atlantic 4000 hydraulic
- Blue Star 110 lb stainless steel anchor
- Anchor Chain and Rode: 600' x 7/8" x 3-strand nylon rope; 30' x 1/2" high-tensile chain
- 2 Underwater Lights
- MarQuip 1700 davit

- Fresh water wash down in anchor locker
- 110V outlet in anchor locker
- Compressed air in anchor locker

Cockpit and Fishing Equipment

- Air conditioned Mezzanine with seating for 4
- Triple spreader Rupp hydraulic outriggers
- Varnished teak Release fighting chair with built-in 5-rod rocket launcher on offset stanchion
- 2 In-deck bait wells
- Large in-deck fish box with Eskimo ice dump and macerator pump
- Walk-thru transom door
- Under-gunnel gaff and mop lockers
- 2 Freezers and refrigerator on Mezzanine deck
- Teak refrigerated drink box next to Mezzanine seating
- Storage area under hinged Mezzanine steps
- Cockpit controls with rudder jog lever and bow thruster control in slide-out drawer under seating on port side
- Fresh water wash down
- Headhunter Sting Ray salt water pump in Lazarette
- Eskimo ice machine
- Tackle storage under Mezzanine seating
- 2 Air conditioning discharge vents in Cockpit overhead
- Lights and speakers in Cockpit overhead
- 6 Rod holders in covering boards
- 3 Rod holders in each aft tower leg
- Custom teak boarding steps
- Spiral staircase from Cockpit to Bridge Deck

Enclosed Bridge Deck

- Accessed via spiral staircase from Cockpit
- Full controls for fishing, starboard aft
- Wet bar with under-counter refrigerator and freezer drawers
- Storage drawers
- L-Shaped lounge starboard
- Teak trimmed granite topped table
- 4 x VEI 19" monitors and full compliment of electronics at Helm dashboard
- Crown leather helm chair on centerline
- Leather bench seats with storage drawers beneath, port and starboard
- Recessed lighting in overhead

Tower

- Jack Hopewell tower
- VEI 12" monitor with NavNet 3D controller
- Icom IC-M504 VHF
- Furuno RD-30
- Simrad RI 35 rudder indicator
- Auto-pilot switch
- Bow thruster control
- Engine displays
- Furuno LH3000 loud hailer
- Fresh water wash down
- Kahlenberg horns

Tender

- Maverick 18' HPX-V flats boat with 150 hp Yamaha 4-stroke engine

Security System

- 3 Cameras in Engine Room
- 1 Camera in Pump Room
- 1 Camera on Tower
- Ship's safe in Master Stateroom

Fire Fighting and Safety Equipment

FIRE FIGHTING EQUIPMENT:

- Smoke Detector in Galley/Companionway
- Fixed FM System
- 9 Portable fire extinguishers

SAFETY EQUIPMENT:

- Givins 6-man life raft in soft bag
- 24" Life ring
- ACR Globalfix iPRO 406 GPS EPIRB
- 2 Flare kits
- Medical Kit

Exclusions

- Owner's personal items
- Fishing rods and tackle

Broker's Remarks

DESTINY represents a rare opportunity for a knowledgeable sport fisherman to acquire a Merritt!

Highest quality craftsmanship abounds in this very lightly used yacht, kept under-cover at Merritt's in Pompano Beach, FL and only used a few weeks each spring in the Bahamas. Never lived aboard and always maintained by Merritt's. Engines equipped with new style injectors, maintained by Owen at Pro Diesel.

DESTINY is one of only two Merritt yachts built with an enclosed bridge and **DESTINY** is the only 86' currently offered for sale on the brokerage market!

A "must see" for the serious buyer in search of the ultimate luxury sport fishing yacht!

Исключения

При продаже яхты исключаются личные вещи владельца.

Отказ от ответственности

Компания предоставляет описание судна или яхты добросовестно, но не может гарантировать точность этой информации, а также не ручается за техническое состояние. Покупатель должен проинструктировать своих агентов или оценщиков исследовать представленную информацию более подробно, по собственному желанию. Продажа судна или яхты, изменение цены или снятие с продажи будет происходить без предварительного уведомления.

ФОТОГРАФИИ

Salon - looking forward to Galley/Dinette



Salon - Entertainment Center to Port



Salon - looking aft from Galley/Dinette



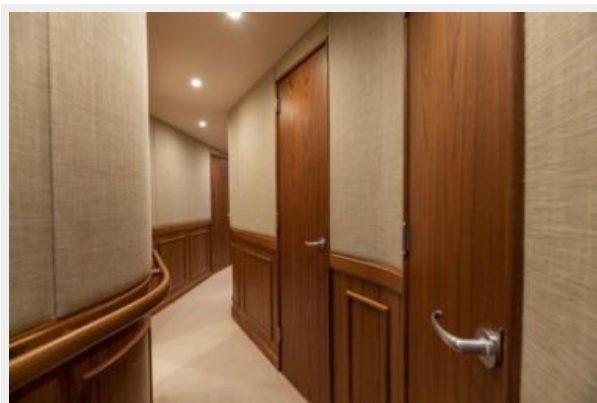
Companionway - looking aft



Companionway - looking forward



Companionway



Master Stateroom - Port



Master Stateroom



Master Bath



Master Bath



VIP Stateroom - Forward



VIP Bath



Crew/Guest Stateroom - Port



Enclosed Bridge Helm



Enclosed Bridge Helm



Cockpit



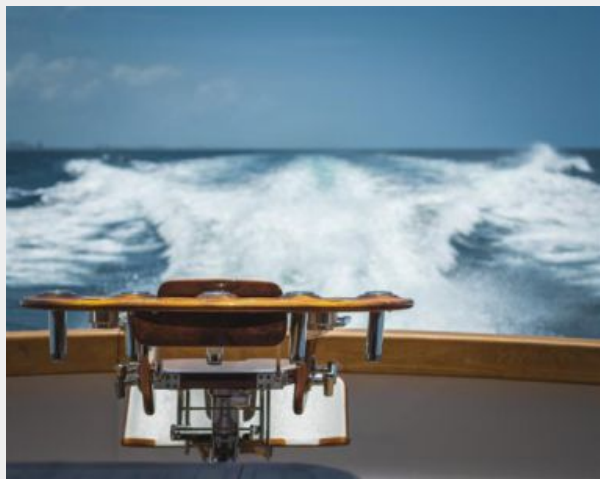
Fighting Chair / Cockpit



Cockpit / Mezzanine Merritt



Fighting Chair



Cockpit - view from Bridge



Aft - View up to Tower



Ladder to Tower Aft



Aft Bridge



Aft Bridge Controls



Electric Room and Pantry



Electrical Panels



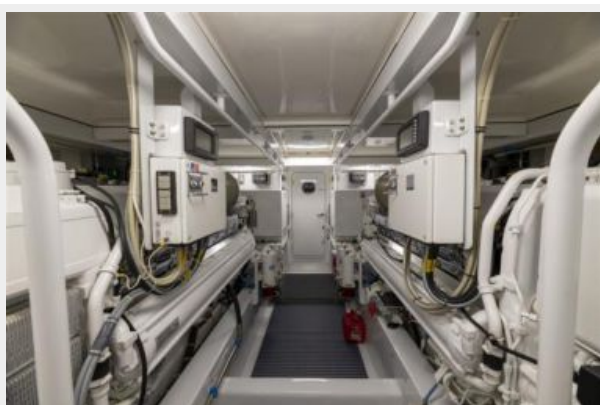
Engine Room



Engine Room



Engine Room



Engine Room



Engine Room



Engine Controls



КОНТАКТЫ

Андрей Шестаков (Andrey Shestakov) – ведущий яхтенный брокер отдела продаж яхт и судов компании Shestakov Yacht Sales Inc. Официальный представитель Shestakov Yacht Sales Inc. для русскоговорящих клиентов в центральном офисе компании в Майами/Форт Лодердейл/Флорида/США.

Контактная информация

Email: andrey@shestakovyachtsales.com

Web: shestakovyachtsales.com

Телефоны

Краснодарский край: **+7(918)465-66-44**

США, Майами, Флорида: **+1(954)274-4435**

Время работы

Понедельник – Суббота: **9:00 - 21:00**
EDT

Воскресенье: **Закрыто**

Адрес



Harbour Towne Marina, 850 NE 3rd St,
STE 213, Dania, FL 33004