

IMAGINE — GULFSTAR



Builder: GULFSTAR

LOA: 44' 0" (13.41m)

Year Built: 1981

Min Draft: 5' 6" (1.68m)

Model: Cruising Sailboat

Price: PRICE ON APPLICATION

Location: United States

Our experienced yacht broker, Andrey Shestakov, will help you choose and buy a yacht that best suits your needs **Imagine — GULFSTAR** from our catalogue. Presently, at Shestakov Yacht Sales Inc., we have a wide variety of yachts available on our sale's list. We also work in close contact with all the big yacht manufacturers from all over the world.

If you would like to buy a yacht **Imagine — GULFSTAR** or would like help answering any questions concerning purchasing, selling or chartering a yacht, please call **+1(954)274-4435**

TABLE OF CONTENTS

| | |
|----------------------------------|----|
| TABLE OF CONTENTS | 2 |
| SPECIFICATIONS | 3 |
| Basic Information | 3 |
| Dimensions | 3 |
| Speed, Capacities and Weight | 3 |
| Accommodations | 3 |
| Hull and Deck Information | 3 |
| Engine Information | 3 |
| DETAILED INFORMATION | 4 |
| Accommodations | 4 |
| Galley | 4 |
| Mechanical | 5 |
| Electrical | 5 |
| Electronics/Navigation Equipment | 5 |
| Sails & Rigging | 6 |
| Deck Equipment | 6 |
| Excluded but negotiable | 7 |
| Disclaimer | 7 |
| Exclusions | 7 |
| Disclaimer | 7 |
| PHOTOS | 8 |
| CONTACTS | 18 |
| Contact details | 18 |
| Telephones | 18 |
| Office hours | 18 |
| Address | 18 |

SPECIFICATIONS

Basic Information

Category: Cruising Sailboat

Sub Category: Center Cockpit

Model Year: 1981

Year Built: 1981

Country: United States

Dimensions

LOA: 44' 0" (13.41m)

LWL: 35' 6" (10.82m)

Min Draft: 5' 6" (1.68m)

Clearance: 55' 0" (16.76m)

Speed, Capacities and Weight

Displacement: 260000 Pounds

Water Capacity: 160 Gallons

Holding Tank: 35 Gallons

Fuel Capacity: 80 Gallons

Accommodations

Total Cabins: 2

Total Heads: 2

Hull and Deck Information

Hull Material: Fiberglass

Engine Information

Manufacturer: Yanmar

Model: Turbo

Fuel Type: Diesel

DETAILED INFORMATION

Accommodations

- Roomy 2 cabin 2 head layout
- Sleeps 6 in air conditioned comfort
- New salon upholstery, cream microsuede (2013)
- Comfortable L shaped settee to port
- Centerline teak drop leaf dining table, seats 6
- Bench settee to starboard with custom flip down cocktail table
- Teak and holly sole and accent carpets
- Teak cabinet doors with cane inserts, generous storage throughout
- Varnished teak joinery and teak arch bulkhead
- White lap and gap headliner
- Navigation desk and work station with upholstered seat
- Passageway cabinets outboard, engine room door inboard
- Master berth aft, hanging lockers, cabinets
- Ensuite master head with vanity sink and lighted faucet, separate shower stall and new freshwater flush electric toilet
- Guest cabin in forward V berth with removable filler, drawers and hanging locker
- Dual access head with fresh water flush electric toilet and vanity sink
- Most lighting is LED
- Sony Home Theatre, 39" flatscreen TV, Sony stereo with subwoofers and speakers
- 12V fans
- Opening hatches with screens
- Opening ports screens
- White UV interior shades

Galley

- Practical U shape galley to port of companionway
- 3 burner Robert Shaw propane stove and oven
- (2) 10# aluminum propane tanks in vented locker (recertified 2018)
- Microwave oven
- Double SS sink with single lever faucet
- Pressure H/C water system
- Freshwater hand pump
- Purified water dispenser (2017)
- Vitrofrigo Top loading refrigeration and freezer (2017)
- Laminate countertops and cabinet doors

Mechanical

- Yanmar 75 hp turbo (2006) 750 hours
- Dual Racor filters and pressure gauge
- Straight shaft, standard stuffing box
- 3 bladed prop (2015)
- New Fuel gauge and sending unit (2018)
- Large engine room with excellent passageway access
- Spectra Ventra watermaker 120 GPD, new membrane to install
- (2) 10K btu Cruiseair AC Units (recent service June 2019)
- (1) Marine elegance electric fresh water flush toilet (2019)
- (1) Raritan Sea-era electric freshwater flush toilet (2019)
- Raritan 6 gal hot water heater (2006)
- Primary bilge pump (2014)
- Bronze seacocks and thruhulls

Electrical

- 8kw Westerbeke generator (2006), 1035 hours
- Renology 400 Watt Solar Panel system with 40 Amp MPPTRenology controller and Bluetooth reader (2018)
- 3000 Watt Xantrex Freedom Inverter and remote panel (2014)
- (4) Apex 8D House batteries, 1000 AH (2017)
- (3) Start batteries for engine, generator and windlass (2017)
- (5) Guest 12V fans (2019)

Electronics/Navigation Equipment

- New Pedestal guard and Navpod (2017)
- NMEA 2000 backbone (2017)
- Garmin 24mi Radar (2017)
- Garmin 4208 Chartplotter (2008)
- Garmin GMI10 wind instrument and masthead transducer (2015)
- Simrad AP24 Autopilot (2017)
- Simrad AP24 Autoopilot computer and compass (2017)
- Standard Horizon VHS Radio with RAM mic at helm (2017)
- Sharkspere Seawatch omnidirectional television antenna (2017)
- 39" Visio HD TV (2015)
- 1000 watt Sony home theatre (2014)
- SSB
- Satellite Phone and antenna (needs activation)
- LED spreader lights (2017)

- LED aft deck light (2018)

Sails & Rigging

- Partially battened Mainsail, 2 reefs (2003)
- Mack Pack with lazy jacks (2015)
- Profurl roller furling unit Genoa (2003)
- Aluminum mast and boom
- Keel stepped mast
- Double spreaders
- Insulated backstay
- Standing rigging inspected 2012
- Hard boom vang
- (2) Barient #32 ST Primary winches
- (1) Barient #21 winch for mainsheet
- (1) Lewmar #16 ST winch on cockpit coaming
- (1) Barient #21 winch on mast
- (1) Barient #9 on boom

Deck Equipment

- Ideal electric windlass with foot controls
- 44# Rochna Vulcan anchor w/160' 3/8" chain and 140' 5/8" rode
- Single bow roller, chain fall, raw water washdown
- (2) Danforth anchors with chain and rode
- Teak grate bow pulpit and SS bow rails
- Tall SS Stanchions with solid SS top rail and lifeline, side gates
- Deck mounted Switlik 6 person Life raft (needs recertification)
- Ditch bag with 406 EPIRB
- SS Cowl dorade vents with sheet guard
- Navy Sunbrella Dodger w/SS grab rail, Bimini and complete eisenglass enclosure (2014)
- Cockpit cushions (2017)
- Long bench cockpit seating
- Teak cockpit coaming
- Teak grate in cockpit sole
- New SS double bend binacle for new Navpod and electronics
- Folding teak cockpit table
- Magma BBQ grill (2017)
- Custom dingy davits with raised solar panel
- Teak toe rail
- Bow, stern and midship cleats
- SS stern rails

- Swim ladder
- Stern deck lockers
- Lifesling
- Deck box storage with Sunbrella covers
- Jerry jugs with Sunbrella covers
- (4) Opening hatches with covers
- (10) Opening portlights
- (4) Fixed portlights
- Docklines and fenders
- Fresh bottom paint (2018)

Excluded but negotiable

- NEW West Marine 310 RIB dingy (2019)
- NEW Propane 9.9hp Outboard (2019)

Disclaimer

The Company offers the details of this vessel in good faith but cannot guarantee or warrant the accuracy of this information nor warrant the condition of the vessel. A buyer should instruct his agents, or his surveyors, to investigate such details as the buyer desires validated. This vessel is offered subject to prior sale, price change, or withdrawal without notice.

Exclusions

Owner's personal belongings.

Disclaimer

The Company offers the details of this vessel or yacht in good faith but cannot guarantee or warrant the accuracy of this information nor warrant the condition of the vessel. A buyer should instruct his representatives, agents, or his surveyors, to investigate such details as the buyer desires validated. This vessel or yacht is offered subject to prior sale, price change, or withdrawal without notice.

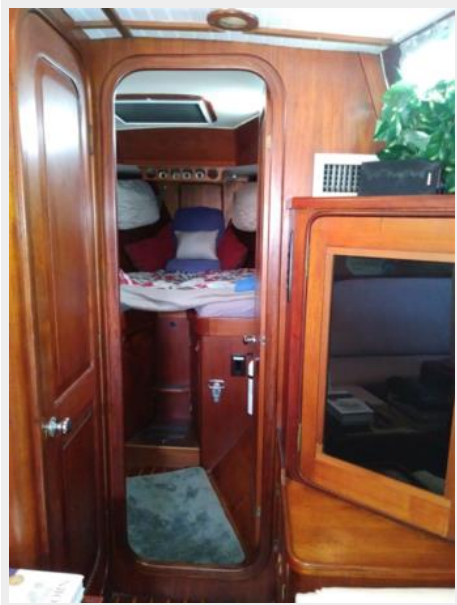
PHOTOS



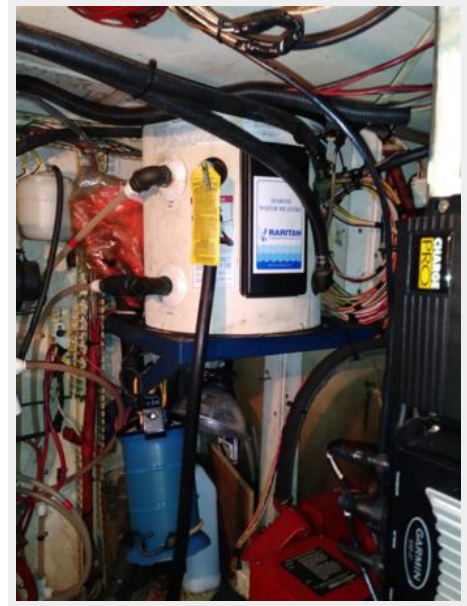


















CONTACTS

Andrey Shestakov, leading yacht broker of the sales department of Shestakov Yacht Sales Inc. Shestakov Yacht Sales Inc., the official representative of the Miami/Fort Lauderdale FL headquarters.

Contact details

Email: andrey@shestakovyachtsales.com

Web: shestakovyachtsales.com/en/

Telephones

USA: +1(954)274-4435

Office hours

Monday – Saturday: **9:00 - 21:00** EDT

Sunday: **closed**

Address



Harbour Towne Marina, 850 NE 3rd St,
STE 213, Dania, FL 33004