

## WAFARER — STANLEY WILLIAMS



**Builder:** STANLEY WILLIAMS

**Year Built:** 1984

**Model:** Cruising Yacht

**Price:** PRICE ON APPLICATION

**Location:** United States

**LOA:** 38' 0" (11.58m)

**Beam:** 12' 2" (3.71m)

**Min Draft:** 3' 6" (1.07m)

**Cruise Speed:** 15 Kts. (17 MPH)

**Max Speed:** 20 Kts. (23 MPH)

Our experienced yacht broker, Andrey Shestakov, will help you choose and buy a yacht that best suits your needs **Wafarer — STANLEY WILLIAMS** from our catalogue. Presently, at Shestakov Yacht Sales Inc., we have a wide variety of yachts available on our sale's list. We also work in close contact with all the big yacht manufacturers from all over the world.

If you would like to buy a yacht **Wafarer — STANLEY WILLIAMS** or would like help answering any questions concerning purchasing, selling or chartering a yacht, please call **+1(954)274-4435**

# TABLE OF CONTENTS

TABLE OF CONTENTS	2
SPECIFICATIONS	5
Overview	5
Basic Information	5
Dimensions	5
Speed, Capacities and Weight	5
Accommodations	6
Hull and Deck Information	6
Engine Information	6
DETAILED INFORMATION	7
Overview	7
Exclusions	8
Disclaimer	9
PHOTOS	10
2	10
3	10
4	10
5	10
6	10
7	10
8	11
9	11
10	11
11	11
12	11
13	11
14	12
15	12

---

16	12
17	12
18	12
19	12
20	13
21	13
22	13
23	13
24	13
25	13
26	14
27	14
28	14
29	14
30	14
31	14
32	15
33	15
34	15
35	15
36	15
37	15
38	16
39	16
40	16
41	16
42	16
43	16
44	17

---

---

45	17
CONTACTS	18
Contact details	18
Telephones	18
Office hours	18
Address	18

---

# SPECIFICATIONS

---

## Overview

---

True Maine Downeast Lobster Yacht, one of the most beautiful boats on the coast of Maine. Over this past winter, the owner had the older CAT replaced with a NEW 400HP YANMAR diesel. We can't say enough about how classy "Wayfarer" looks and feels. She is the first Stanley 38 that John Williams Boat Company launched. She was designed and built in 1983/84 for a family from Wilmington, Delaware and Boca Grand, Florida. Please give us a call to learn more about this fantastic opportunity!

## Basic Information

---

**Category:** Cruising Yacht

**Sub Category:** Downeast

**Model Year:** 1984

**Year Built:** 1984

**Country:** United States

## Dimensions

---

**LOA:** 38' 0" (11.58m)

**Beam:** 12' 2" (3.71m)

**Min Draft:** 3' 6" (1.07m)

**MFG Length:** 38' 0" (11.58m)

## Speed, Capacities and Weight

---

**Cruise Speed:** 15 Kts. (17 MPH)

**Max Speed:** 20 Kts. (23 MPH)

**Displacement:** 16500 Pounds

**Water Capacity:** 100 Gallons

**Holding Tank:** 20 Gallons

**Fuel Capacity:** 100 Gallons

---

## Accommodations

---

**Total Cabins:** 1

**Total Berths:** 5

**Total Heads:** 1

---

## Hull and Deck Information

---

**Hull Material:** Fiberglass

**Hull Configuration:** Semi-Displacement

---

## Engine Information

---

**Engines:** 1

**Manufacturer:** Yanmar

**Model:** 6 Cylinder

**Engine Type:** Inboard

**Fuel Type:** Diesel

# DETAILED INFORMATION

## Overview

### Accommodations

- Traditional Herreshoff decor with satin finish and off-white bulkheads
- Mahogany ledger boards, corner posts, trim molding door frames and doors
- Forward there is a spacious v-berth with a 7' length. In addition to the fixed v-berth there are two pipe berths that swing into upper bunks for two additional berths and act as back rests for the lower bunks when not in use.
- Aft of the v-berth area there is a dinette that seats four at a varnished Mahogany drop leaf table. Outboard the settee there is a large hanging locker to port and a chest of drawers to stbd. There is a nice large shelf with fiddles on top of the stowage units as well as lift outs for additional stowage under the settee seats.
- The Galley to port and the Head to stbd. aft of the settees. The Galley has a large top load refrigeration system, stainless steel sink, storage locker, 3 burner Paul Luke propane stove, sliding door locker outboard the counter top and a large locker under the sink. The Head has a shower, stainless steel sink and counter top with locker stowage underneath.
- Webasto Evo 40D diesel cabin heater- for a nice warm cabin!
- Bronze port lights

Engine New Yanmar 400hp Common Rail Injection, just installed, engine beds replaced, new exhaust, shaft, prop etc. smooth and quite running with a transferable 2 year warranty (we will provide specific dates). All work was completed by one of Maine's premier yacht yards.

- 2 Year engine warranty-(specific date will be supplied)
- Kanzaki Transmission KMH 61A
- New dual Racor fuel system
- New stuffing box
- New shaft
- New 4 Blade Prop.
- The new engine is truly an amazing feature! A true classic with a modern powertrain, for years of reliability.

Cockpit and Helm area The cockpit is spacious with side decks that are flush so you can sit comfortably on them. There is a stern seat with cushion and back rest. Cockpit sole is teak. There are hatches in the sole to access bilge areas and systems There is a Lewmar winch on the stern deck to handle the tender. The mast and boom are Sitka Spruce and afford many useful functions including displaying the US ensign and your personal colors

- Captain's helm seat
- Portside helm area seating

- Large windshield areas
- An overall open and fun area for entertaining!

## Electronics

- Raymarine A127 Radome
- Raymarine A127 Chartplotter
- Authelm ST 80 Depth Sounder
- Perko Manual spotlight-hardtop mounted
- Icom VHF

## Electrical

- 12 DC System
- 2- 4D Lead acid batteries
- 12V distribution panel with breakers
- Xantex HF 18000 inverter/charger
- 30 Amp 120 V System with Panel
- Shorepower cord.
- GFCI Outlets for galley and head

## Galley

- Hot and Cold Pressure water - Webasto 6.5 Hot water tank, heat exchanger or shorepower heated.
- Paul Luke 2-burner propane stove with oven
- New Webasto Isotherm refrigeration system
- Single Stainless Steel deep well sink
- Lots of storage for dishware and supplies

## Deck

- CQR #35 Anchor with line and chain
- Ideal Anchor Capstan
- Sitka Spruce mast/boom with spreader lights
- Swim platform with ladder.
- Bowsprit
- Wagner hydraulic steering system
- Windshield wipers(3)

## Exclusions

---



Owner's personal belongings.

## Disclaimer

---

The Company offers the details of this vessel or yacht in good faith but cannot guarantee or warrant the accuracy of this information nor warrant the condition of the vessel. A buyer should instruct his representatives, agents, or his surveyors, to investigate such details as the buyer desires validated. This vessel or yacht is offered subject to prior sale, price change, or withdrawal without notice.

# PHOTOS

2



3



4



5



6



7



8



9



10



11



12



13



14



15



16



17



18



19



20



21



22



23



24



25



26



27



28



29



30



31



32



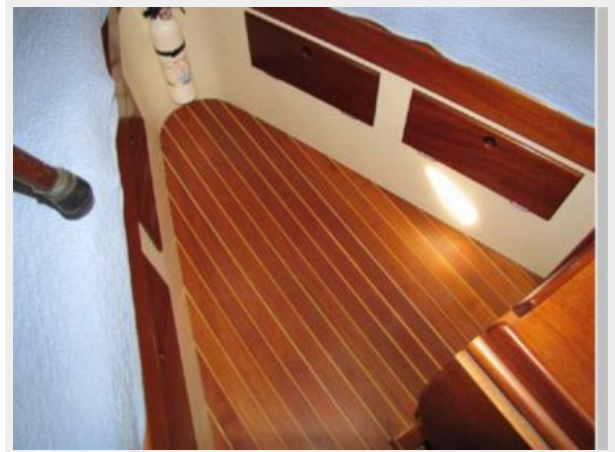
33



34



35



36



37



38



39



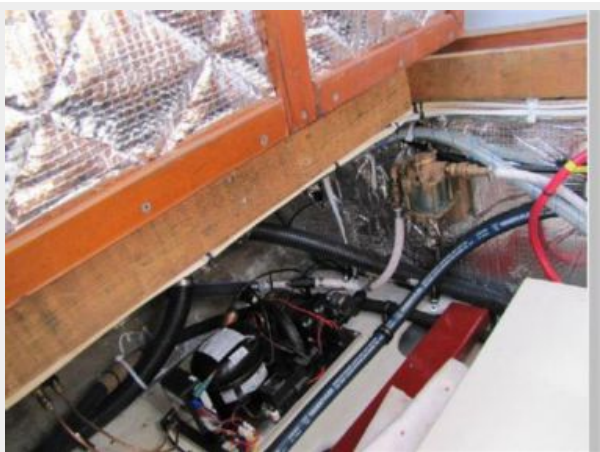
40



41



42



43





44



45



---

# CONTACTS

---

Andrey Shestakov, leading yacht broker of the sales department of Shestakov Yacht Sales Inc. Shestakov Yacht Sales Inc., the official representative of the Miami/Fort Lauderdale FL headquarters.

---

## Contact details

---

Email: [andrey@shestakovyachtsales.com](mailto:andrey@shestakovyachtsales.com)

Web: [shestakovyachtsales.com/en/](http://shestakovyachtsales.com/en/)

---

## Telephones

---

USA: +1(954)274-4435

---

## Office hours

---

Monday – Saturday: **9:00 - 21:00** EDT

Sunday: **closed**

---

## Address

---



Harbour Towne Marina, 850 NE 3rd St,  
STE 213, Dania, FL 33004