

CORSICA LADY — MAINSHIP



Судостроитель: MAINSHIP

Год постройки: 1998

Модель: Траулер

Цена: **ЦЕНА ЯХТЫ ПО ЗАПРОСУ**

Местонахождение: United States

Длина общая: 37' 0" (11.28m)

Ширина: 14' 2" (4.32m)

Мин. осадка: 3' 8" (1.12m)

Макс. осадка: 3' 8" (1.12m)

Крейс. скорость: 10 Kts. (12 MPH)

Макс. скорость: 14 Kts. (16 MPH)

Купить **Corsica Lady — MAINSHIP** а также выбрать подходящую вам яхту из нашего каталога яхт вам поможет опытный яхтенный брокер Андрей Шестаков. На сегодняшний день компания **Shestakov Yacht Sales Inc.** имеет большое количество яхт в собственном списке продаж, а также тесно сотрудничает со всеми крупными яхтенными производителями по всему миру.

Для того чтобы купить яхту **Corsica Lady — MAINSHIP** а также проконсультироваться по любому вопросу связанному с покупкой, продажей, чартером яхт позвоните по телефону **+7(918)465-66-44**.

ОГЛАВЛЕНИЕ

ОГЛАВЛЕНИЕ	2
ХАРАКТЕРИСТИКИ	4
Обзор	4
Основная информация	4
Размеры	4
Скорость, вместимость и масса	4
Размещение	5
Корпус и палуба	5
Информация о двигателе	5
ПОДРОБНОЕ ОПИСАНИЕ	6
Main Description	6
EXTERIOR AND COCKPIT	6
Flybridge	6
INTERIOR WALK THROUGH	8
Main cabin	8
Galley	8
Lower Helm	8
Companionway	9
Master Stateroom	9
Guest Stateroom	9
Head	9
Electronics	9
DECK EQUIPMENT	10
Engine and Mechanical Equipment	10
Fire & Safety Equipment	10
RECENT REPAIRS AND UPGRADES -- RECEIPTS AVAILABLE	10
Exclusions	11
Tender	11

Disclaimer	11
Исключения	11
Отказ от ответственности	11
ФОТОГРАФИИ	12
КОНТАКТЫ	28
Контактная информация	28
Телефоны	28
Время работы	28
Адрес	28

ХАРАКТЕРИСТИКИ

Обзор

Corsica Lady is a 1998 Mainship 350 coastal cruiser with classic trawler lines, built on a faster modified-V hull with shallow, full length keel. One of Mainship's more popular models, *Corsica Lady* features timeless, stylish lines and an open salon/galley/interior helm layout. Both the interior and exterior spaces of *Corsica Lady* are designed for ease of movement, living, comfort, entertainment, and cruising.

The single Caterpillar 300 hp diesel engine is powerful enough to reach a top speed of 14 knots, but is economical enough to cruise efficiently at 8-10 knots.

After crossing their wake on The Great Loop,

the owners are ready for their next adventure,

and *Corsica Lady* is ready for hers.

Основная информация

Тип судна: Траулер

Модельный год: 1998

Год постройки: 1998

Страна: United States

Размеры

Длина общая: 37' 0" (11.28m)

Длина по ватерлинии: 34' 9" (10.59m)

Ширина: 14' 2" (4.32m)

Мин. осадка: 3' 8" (1.12m)

Макс. осадка: 3' 8" (1.12m)

Трапы: 19' 2" (5.84m)

Скорость, вместимость и масса

Крейс. скорость: 10 Kts. (12 MPH)

Макс. скорость: 14 Kts. (16 MPH)

Вместимость воды: 130 Gallons

Вместимость сточного бака: 30 Gallons

Объем топливного бака: 300 Gallons

Размещение

Всего кают: 2

Всего коек: 2

Всего ком. состава: 1

Корпус и палуба

Материал корпуса: Fiberglass

Информация о двигателе

Двигатели: 1

Производитель: Caterpillar

Модель: 3116

Тип двигателя: Inboard

Тип топлива: Diesel

ПОДРОБНОЕ ОПИСАНИЕ

Main Description

Corsica Lady is a 1998 Mainship 350 coastal cruiser with classic trawler lines, built on a faster modified-V hull with shallow, full length keel. One of Mainship's more popular models, *Corsica Lady* features timeless, stylish lines and an open salon/galley/interior helm layout. Both the interior and exterior spaces of *Corsica Lady* are designed for ease of movement, living, comfort, entertainment, and cruising.

The single Caterpillar 300 hp diesel engine is powerful enough to reach a top speed of 14 knots, but is economical enough to cruise efficiently at 8-10 knots.

After crossing their wake on The Great Loop,
the owners are ready for their next adventure,
and *Corsica Lady* is ready for hers.

EXTERIOR AND COCKPIT

Boarding *Corsica Lady* is via the swim platform with a centered transom door, or over the gunwales on either the port or starboard side, and down a few removable steps that can be used on either side. The large cockpit has a hardtop roof with rod holders and a removable shade curtain across the stern. The molded staircase to the flybridge on the starboard side is easy to navigate. The foredeck is reached via comfortable walkways on both the port and starboard sides. The large screened, sliding door provides entry to the main cabin.

A large hatch just outside the sliding door leads to a mechanical space with access to the generator, water tanks, battery switches and shaft seal. A smaller lazarette further aft provides access to the aft end of the generator, stern thruster and its battery, steerage, and storage space. Two additional storage compartments are in the transom port and starboard of the centered door.

A portable propane Weber BBQ grill sits on the transom, and is attached to a fiberglass propane tank with fuel level sights for easy grilling. A wooden flag pole is mounted on the transom. The ship's bell is mounted next to the main cabin door, at the bottom of the flybridge steps.

An Atkins & Hoyle crane with a wired control is mounted on the transom, aft to port, which makes loading and unloading the dinghy onto the swim platform very convenient. The current owner added two hawse pipes and cleats to the transom for extra secure line handling.

Flybridge

The large flybridge and sundeck provides a great place for navigating, entertaining, or relaxing. Tall railings around the sundeck and stairwell provide extra safety and security.

The flybridge is enclosed with a navy blue Sunbrella bimini top, an eisenglass front window, and navy blue mesh screens on three sides (New 02/2017). There are two large bench seats on either side of the flybridge, with backrests on the end that turn them into chaise lounges, with covers. There is abundant seating beneath and behind the bench seats. A fold up table, with storage in the center, is between the bench seats, and can be used as a dinette. A single Pompanette captain's chair (New 09/2018) is centered at the flybridge helm. A small, removable table is mounted starboard of the captain's chair. The helm has a full storage cover, and is outfitted with the following equipment:

Garmin 8212

Garmin AIS600 Automatic Identification System Transceiver

Garmin GXM52 Sirius Marine Transceiver

Garmin B60 Transducer with Temperature for 8212 and 741X

Garmin GMR24xHD Radar

Garmin GSD22 Sounder Sonar

Standard Horizon Eclipse DSC+ VHF marine radio

Yacht Thruster bow and stern thruster control

VDO System Guages

Rule High water alarm

Battery Monitor BM-1

12V electrical outlets (2) 12v aux plugs and (2) USB added by current owner

Simrad AP-11 Autopilot

Windlass controls

Saturn AquaMeter Compass

Trim tab controls

Raymarine tri-data control (Out Of Service)

A deck box is located along the aft rail of the sundeck and two white folding deck chairs are included with the boat. A short, foldable mast is located in the center of the sundeck. A Lifesling is mounted on the sundeck railing.

INTERIOR WALK THROUGH

Once inside the main cabin of Corsica Lady the entertainment center and L shaped galley are to port; the companionway to the berthing compartments and head is centered forward; and the lower helm, seating/dining area and desk are to starboard. A full-sized door on the starboard side leads outside for ease of line handling. Going down the steps into the companionway the guest cabin is to port, across from the head to starboard, and the master cabin is forward in the bow.

Main cabin

The 14' 2" beam of Corsica Lady provides a large open floor plan salon/galley/helm area. The sole was replaced (01/2017) with Allure Teak Resilient Plank flooring for easy cleaning and maintenance, and is covered with a large area rug. Hinged panels in the sole provide access to the engine compartment; there are ladder steps into the engine compartment. The electrical panel is inside the aft sliding door to starboard. Large windows forward, the starboard wing door, and the screened aft sliding door provide natural lighting and fresh airflow to the space. The center panel of the windshield opens, and there are two windshield wipers. White mesh covers fit over the outside of the windshield. The salon seating area is starboard, and features two easy to clean free-standing chairs with matching ottomans (New 02/2017). An easily managed folding table is between the chairs. A built-in desk area with a Corian surface is aft to starboard. The entertainment center, featuring a Sceptre flat screen TV is aft to port. Grab rails are mounted on the salon ceiling.

Galley

The galley to port on Corsica Lady features everything needed for extended cruising, including: Corian counters Princess three burner electric stove and oven, with a folding top featuring a cutting board A LED light over the stove Nova Kool three quarter height refrigerator with separate freezer compartment below (12V/120) GE Turntable microwave oven Black & Decker Spacemaker coffee maker Pull out racks in some cabinets for ease of storage Mounted spice rack Mounted mug rack Mounted plate storage rack Mounted knife rack Nickel door handles added Removable Corian sink cover over 1/2 of the sink Pur water filter on sink faucet with spare filters

Lower Helm

The lower helm of Corsica Lady is to starboard and includes: Garmin GPSmap 741xs Standard Horizon Eclipse DSC+ VHF marine radio VDO System Guages Remote Control for bow and stern thruster Saturn AquaMeter Compass Trim tab controls Raymarine tri-data control (Out Of Service)

Companionway

Two of the companionway steps are hinged for storage. The sole is Allure Teak Resilient Plank flooring.

Master Stateroom

The master stateroom on Corsica Lady is located all the way forward in the bow. The centered queen-size berth has walk-around access, reading lights, courtesy lights, under bed storage drawers, and hanging lockers to port and starboard. There is a private entrance to the head to starboard, which makes the master stateroom en-suite. The sole is carpeted. Two portlights and an overhead hatch provide natural light and airflow. All doors have full length mirrors on both sides, as well as a full length wall mounted mirror. There are numerous wall hooks mounted around the stateroom. The master stateroom mattress on the Corsica Lady was replaced with a 7' custom marine mattress (01/2018). There is additional storage under the mattress.

Guest Stateroom

The guest cabin is to port, aft of the master cabin on Corsica Lady and features a queen-size berth, storage under the mattress, a hanging locker, reading lights, a clever storage cabinet with clear doors, a wall mounted full length mirror, numerous mounted wall hooks, full length mirrors mounted on both sides of the door, and a storage nook next to the berth. There is a large shelf on top of the hanging locker for added storage. Just over half of the berth is tucked under the galley floor but there is plenty of open space so that guests won't feel confined. A portlight and overhead hatch provide plenty of natural light and airflow. The sole is Allure Teak Resilient Plank flooring.

Head

The bright and modern head features a fresh water Vacu Flush toilet, molded vanity with sink, storage cabinets and a large circular mirror over the vanity. The large shower stall has glass accordion doors and a wall mounted/hand held shower head, which provide a very comfortable space to shower. A portlight and overhead hatch with a solar fan provide natural light and airflow. Access is via a private door from the master cabin and a second door from the companionway, for guests and day use. Both doors have full length mirrors mounted on both sides. There is a plastic holding tank, as well as a macerator.

Electronics

Garmin 8212 Garmin GPSMap 471xs chartplotter Garmin GMR24xHD Radar Garmin AIS600 Automatic Identification System Transceiver Garmin GXM52 Sirius Marine Transceiver Garmin B60 Transducer with Temperature for 8212 and 741X Garmin GSD22 Sounder Sonar (2)

Standard Horizon Eclipse DSC+ VHF marine radio Yacht Thruster bow and stern thruster control (Upper Helm) Remote Control for bow and stern thruster (Lower Helm) Simrad AP-11 Autopilot Kisaе DC/AC 2000W True SineWave Inverter Rule High water alarm Battery Monitor BM-1 12V electrical outlets (2) 12v aux plugs and (2) USB added by current owner (Upper helm) (2) USB added by current owner (Lower helm) Windlass controls Trim tab controls Island Time Marina WiFi System with wireless router Stereo speakers Wiring for stereo ? No stereo currently installed (2) Raymarine tri-data control (Out Of Service)

DECK EQUIPMENT

Corsica Lady features the following deck equipment: West Marine 10' RIB dinghy with cover Tohatsu MFS6CDS 6 hp short shaft 4 stroke motor (04/2017) Bow Pulpit Delta main anchor with snubber and 230' chain Spare Delta anchor Spare Danforth anchor Lofrans Project capstan with foot switches on foredeck Safety rails and stainless steel deck fittings Fresh water wash down on bow and stern

Engine and Mechanical Equipment

Corsica Lady features the following engine and mechanical equipment: Single Caterpillar 3116 300 hp marine diesel main engine, 3043 hours ZF gearbox (Type IRM220A-1) Racor diesel fuel filter with vacuum guage Onan 8.0kW Generator with approx. 700 hours Bow Thruster 5HP SidePower Stern Thruster (Installed 03/2017) Oil Exchange System 2 - Air Marine Systems 16,000 BTU air conditioners model VCP16K 6 Gallon Water heater

Fire & Safety Equipment

Corsica Lady features the following fire and safety equipment: Halon fire suppression system (4) Portable fire extinguishers (New 06/2019) (2) Carbon Monoxide detectors Full walk-around side decks with waist high rails Lifesling Life jackets (2 Harness style, 2 Belt style, numerous orange) Throwable cushion Flares Electric horn Intellisense IS-150 Security System (Not used by current owner) 2019 USCG Safety Inspection Certification and Decal

RECENT REPAIRS AND UPGRADES -- RECEIPTS AVAILABLE

In addition to regular oil changes, impeller replacement, and new zincs as needed, the following repairs and upgrades were completed on Corsica Lady: 2018 Installed 300 Simplex Stern Thruster with Dual Joystick Control (02/2018) 2017 New forward bilge pump (01/2017) Garmin electronics installed (01/2017) New aft bilge pump (02/2017) New shower pump and switch (02/2017) Painted bottom with Interlux Aqua/One (03/2017) Replace cutlass bearing (03/2017) New Shaft (03/2017) New engine cooling pump (05/2017) New raw water pump (06/2017) New alternator (06/2017)

Exclusions

Owners personal belongings

Tender

10? West Marine RIB Dinghy (2016) with cover Tohatsu MFS6CDS 6 hp short shaft 4 stroke motor (04/2017)

Disclaimer

The Company offers the details of this vessel in good faith but cannot guarantee or warrant the accuracy of this information nor warrant the condition of the vessel. A buyer should instruct his agents, or his surveyors, to investigate such details as the buyer desires validated. This vessel is offered subject to prior sale, price change, or withdrawal without notice.

Исключения

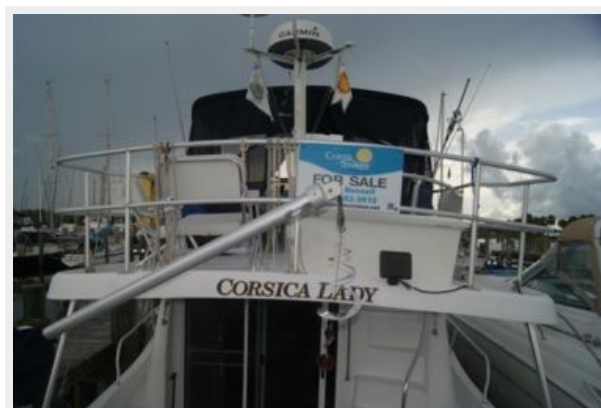
При продаже яхты исключаются личные вещи владельца.

Отказ от ответственности

Компания предоставляет описание судна или яхты добросовестно, но не может гарантировать точность этой информации, а также не ручается за техническое состояние. Покупатель должен проинструктировать своих агентов или оценщиков исследовать представленную информацию более подробно, по собственному желанию. Продажа судна или яхты, изменение цены или снятие с продажи будет происходить без предварительного уведомления.

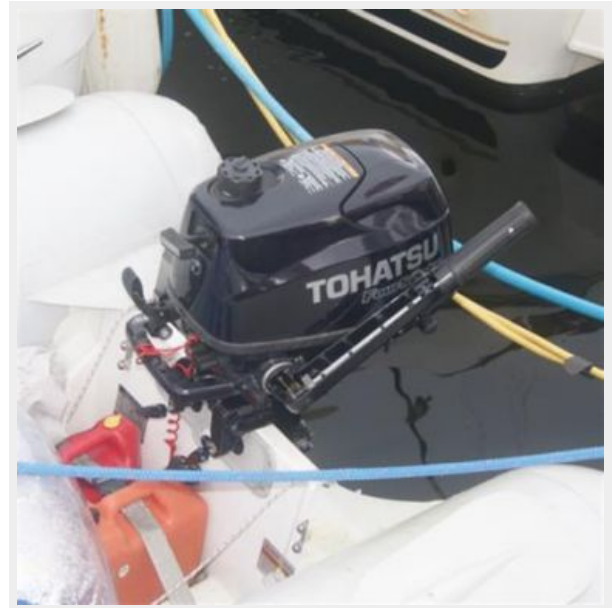
ФОТОГРАФИИ

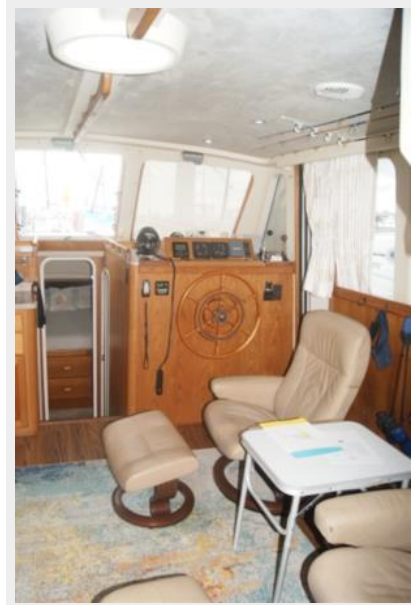






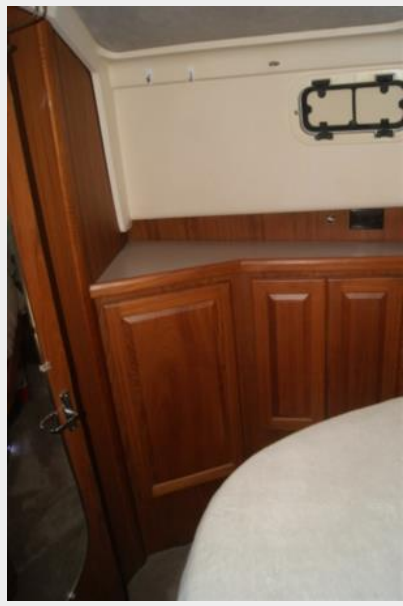


























КОНТАКТЫ

Андрей Шестаков (Andrey Shestakov) – ведущий яхтенный брокер отдела продаж яхт и судов компании Shestakov Yacht Sales Inc. Официальный представитель Shestakov Yacht Sales Inc. для русскоговорящих клиентов в центральном офисе компании в Майами/Форт Лодердейл/Флорида/США.

Контактная информация

Email: andrey@shestakovyachtsales.com

Web: shestakovyachtsales.com

Телефоны

Краснодарский край: **+7(918)465-66-44**

США, Майами, Флорида: **+1(954)274-4435**

Время работы

Понедельник – Суббота: **9:00 - 21:00**
EDT

Воскресенье: **Закрито**

Адрес



Harbour Towne Marina, 850 NE 3rd St,
STE 213, Dania, FL 33004