

FALCON 28 — FALCON



Builder: FALCON

Year Built: 1996

Model: Motor Yacht

Price: PRICE ON APPLICATION

Location: Greece

LOA: 91' 11" (28.00m)

Beam: 20' 10" (6.33m)

Max Draft: 7' 9" (2.35m)

Cruise Speed: 20 Kts. (23 MPH)

Max Speed: 23 Kts. (26 MPH)

Our experienced yacht broker, Andrey Shestakov, will help you choose and buy a yacht that best suits your needs **FALCON 28 — FALCON** from our catalogue. Presently, at Shestakov Yacht Sales Inc., we have a wide variety of yachts available on our sale's list. We also work in close contact with all the big yacht manufacturers from all over the world.

If you would like to buy a yacht **FALCON 28 — FALCON** or would like help answering any questions concerning purchasing, selling or chartering a yacht, please call **+1(954)274-4435**

TABLE OF CONTENTS

TABLE OF CONTENTS	2
SPECIFICATIONS	3
Overview	3
Basic Information	3
Dimensions	3
Speed, Capacities and Weight	3
Accommodations	3
Hull and Deck Information	4
Engine Information	4
PHOTOS	5
CONTACTS	11
Contact details	11
Telephones	11
Office hours	11
Address	11

SPECIFICATIONS

Overview

An exceptional condition Falcon 28m totally Refitted in 2017 with 5 cabins layout Plus 5 persons crew. She is vat paid with Commercial license since 2018. A very elegant yacht with plenty of interior and exterior volumes that can accommodate up to 10 Guests in 5 cabins out of which 4 are double all with en-suite facilities. She is powered by two MTY engines 16V2000 series and can smoothly cruise at the speed of 20 knots with top speed at to 24knots. Her economic speed at 15 knots with consumption of 250l/hour.

Basic Information

Category: Motor Yacht

Sub Category: Flybridge

Year Built: 1996

Refit Year: 2017

Country: Greece

Fly Bridge: Yes

Dimensions

LOA: 91' 11" (28.00m)

Beam: 20' 10" (6.33m)

Max Draft: 7' 9" (2.35m)

Speed, Capacities and Weight

Cruise Speed: 20 Kts. (23 MPH)

Max Speed: 23 Kts. (26 MPH)

Water Capacity: 264.172052 Gallons

Fuel Capacity: 2641.72052 Gallons

Accommodations

Total Cabins: 5

Sleeps: 10

Total Heads: 5

Crew Cabin: 2

Crew Sleeps: 5

Hull and Deck Information

Hull Material: GRP

Engine Information

Engines: 2

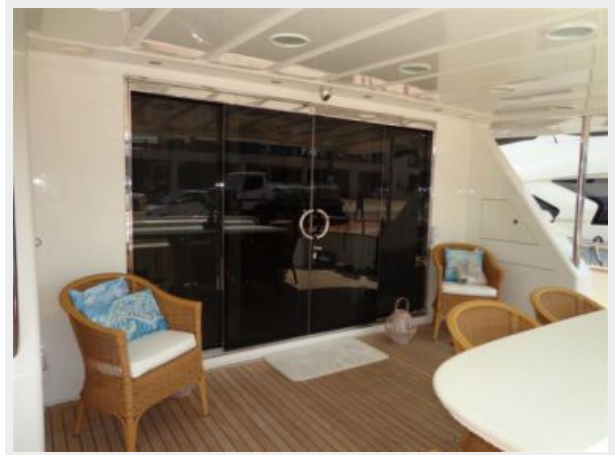
Manufacturer: MTU

Model: 16V2000

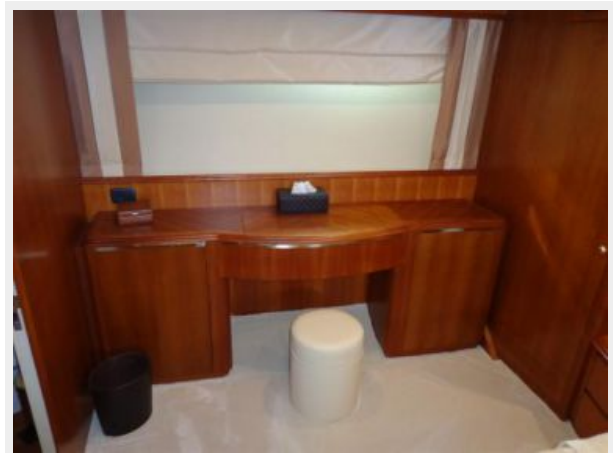
Engine Type: Inboard

Fuel Type: Diesel

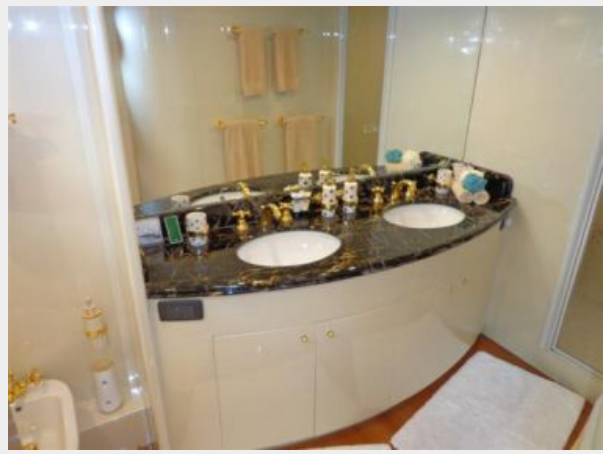
PHOTOS













CONTACTS

Andrey Shestakov, leading yacht broker of the sales department of Shestakov Yacht Sales Inc. Shestakov Yacht Sales Inc., the official representative of the Miami/Fort Lauderdale FL headquarters.

Contact details

Email: andrey@shestakovyachtsales.com

Web: shestakovyachtsales.com/en/

Telephones

USA: +1(954)274-4435

Office hours

Monday – Saturday: **9:00 - 21:00** EDT

Sunday: **closed**

Address



Harbour Towne Marina, 850 NE 3rd St,
STE 213, Dania, FL 33004