

MENTAL FLOSS — MAINSHIP



Builder: MAINSHIP

Year Built: 2006

Model: Trawler

Price: **PRICE ON APPLICATION**

Location: United States

LOA: 34' 0" (10.36m)

Beam: 14' 3" (4.34m)

Max Draft: 3' 4" (1.02m)

Our experienced yacht broker, Andrey Shestakov, will help you choose and buy a yacht that best suits your needs **Mental Floss — MAINSHIP** from our catalogue. Presently, at Shestakov Yacht Sales Inc., we have a wide variety of yachts available on our sale's list. We also work in close contact with all the big yacht manufacturers from all over the world.

If you would like to buy a yacht **Mental Floss — MAINSHIP** or would like help answering any questions concerning purchasing, selling or chartering a yacht, please call **+1(954)274-4435**

TABLE OF CONTENTS

| | |
|-----------------------------------|----|
| TABLE OF CONTENTS | 2 |
| SPECIFICATIONS | 3 |
| Overview | 3 |
| Basic Information | 3 |
| Dimensions | 3 |
| Speed, Capacities and Weight | 4 |
| Accommodations | 4 |
| Hull and Deck Information | 4 |
| Engine Information | 4 |
| DETAILED INFORMATION | 5 |
| INSTALLED EQUIPMENT | 5 |
| Manufacturer Provided Description | 5 |
| Exclusions | 5 |
| Disclaimer | 5 |
| PHOTOS | 6 |
| CONTACTS | 11 |
| Contact details | 11 |
| Telephones | 11 |
| Office hours | 11 |
| Address | 11 |

SPECIFICATIONS

Overview

Complete with a 14'2" beam, full walk around deck, no ladders, real steps to fly bridge, heavy duty SS 1.25" hand rails, she's the safest boat for kids to seniors.

- Only 1100 hours on Twin 240 Yanmars, slow cruise @ 8 or fast cruise @ 15 ..845 hours on gen

- Forward stateroom w-A/C, elect head & shower, galley down w/refer, two burner elect stove, microwave, toaster oven, SS sink, lots of cabinets & counter space.

- Main salon has a second larger A/C, sleeper sofa, a nice table w/ two chairs, TV, stereo, wood mini blinds, French doors to a covered aft deck w/transom storage & door to dive platform w/dingy brackets... -New complete fly bridge enclosure W/seating for 8 plus a fiberglass deck box, two deck chairs, two rod holders.. Raymarine touch screen GPS, W/radar, depth, speed etc. Fusion stereo.

Seller will consider smaller boat trade in

Basic Information

Category: Trawler

Sub Category: Sedan

Model Year: 2006

Year Built: 2006

Country: United States

Fly Bridge: Yes

Cockpit: Yes

Dimensions

LOA: 34' 0" (10.36m)

Beam: 14' 3" (4.34m)

Max Draft: 3' 4" (1.02m)

Clearance: 16' 5" (5.00m)

Speed, Capacities and Weight

Displacement: 20000 Pounds

Water Capacity: 70 Gallons

Holding Tank: 30 Gallons

Fuel Capacity: 250 Gallons

Accommodations

Total Cabins: 1

Hull and Deck Information

Hull Material: Fiberglass

Engine Information

Engines: 2

Manufacturer: Yanmar

Engine Type: Inboard

Fuel Type: Diesel

DETAILED INFORMATION

INSTALLED EQUIPMENT

Accommodations Number of single berths: 4 Number of cabins: 1 Number of heads: 1
Electronics VHF Radar Compass Depthsounder GPS TV set Inside Equipment Hot water Air conditioning Heating Electric head Electric bilge pump Refrigerator Microwave oven Battery charger Electrical Equipment Shore power inlet Generator Electrical Circuit: 110V Outside Equipment/Extras Electric windlass Covers Bimini Top

Manufacturer Provided Description

Mainship engineers and designers have utilized every available space in the 34 to offer a centerline queen berth master stateroom, full head with stall shower and a salon large enough to entertain in. The galley includes a two-burner range, microwave oven, coffee maker and dual-voltage refrigerator and freezer. Countertops are genuine Corian and all hardware and fixtures are first-class. The covered aft deck includes molded steps to the bridge for safe and easy access. The upper helm station carries full instrumentation, and there is plenty of room for electronics as well. An optional lower station is available as well. The proven hull design is easily driven by the standard single diesel or by twins. A full sand shoe protects the single screw model, while twin screws are recessed into efficient tunnels for shallow water operation.

Exclusions

Owner's personal belongings.

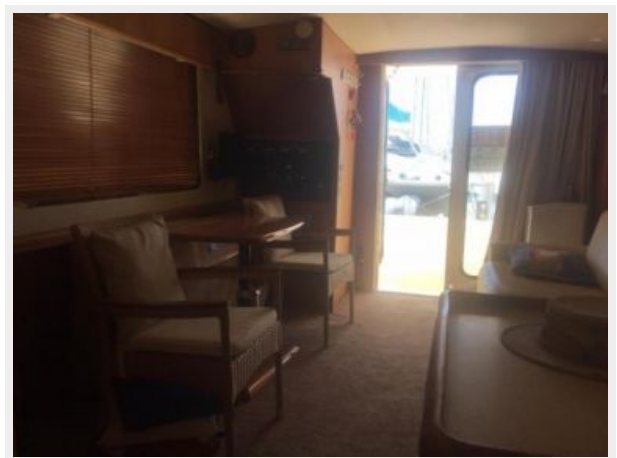
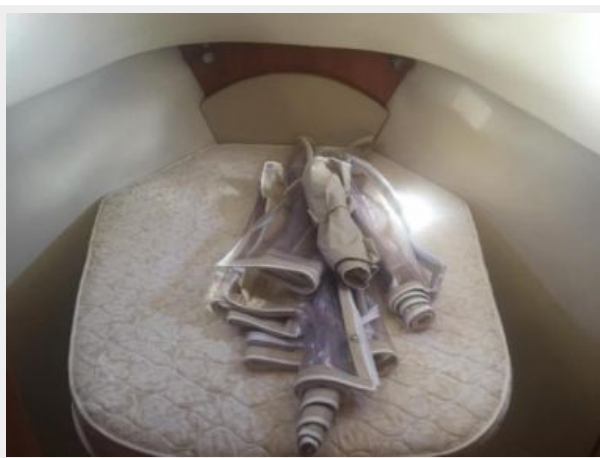
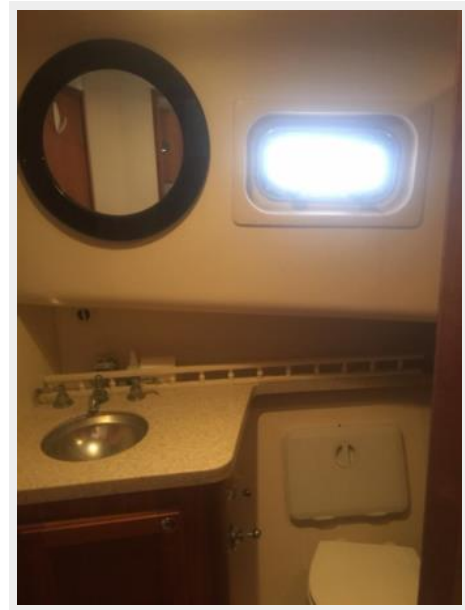
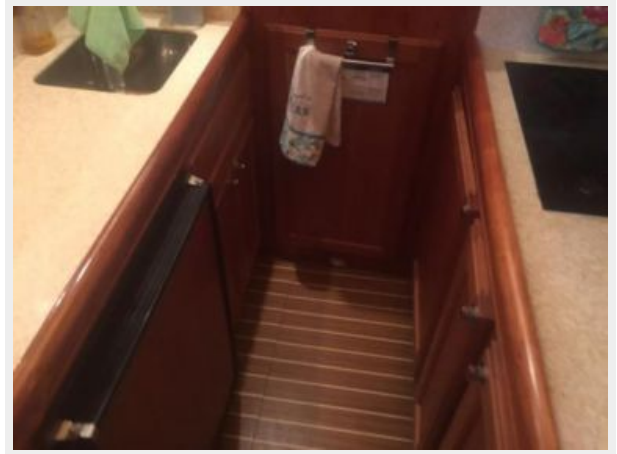
Disclaimer

The Company offers the details of this vessel or yacht in good faith but cannot guarantee or warrant the accuracy of this information nor warrant the condition of the vessel. A buyer should instruct his representatives, agents, or his surveyors, to investigate such details as the buyer desires validated. This vessel or yacht is offered subject to prior sale, price change, or withdrawal without notice.

PHOTOS











CONTACTS

Andrey Shestakov, leading yacht broker of the sales department of Shestakov Yacht Sales Inc. Shestakov Yacht Sales Inc., the official representative of the Miami/Fort Lauderdale FL headquarters.

Contact details

Email: andrey@shestakovyachtsales.com

Web: shestakovyachtsales.com/en/

Telephones

USA: +1(954)274-4435

Office hours

Monday – Saturday: **9:00 - 21:00** EDT

Sunday: **closed**

Address



Harbour Towne Marina, 850 NE 3rd St,
STE 213, Dania, FL 33004