

OHANA — ABSOLUTE



Судостроитель: ABSOLUTE

Год постройки: 2017

Модель: Моторная яхта

Цена: **ЦЕНА ЯХТЫ ПО ЗАПРОСУ**

Местонахождение: Bahamas

Длина общая: 52' 6" (16.00m)

Ширина: 15' 3" (4.65m)

Макс. осадка: 3' 8" (1.12m)

Крейс. скорость: 14 Kts. (16 MPH)

Макс. скорость: 25 Kts. (29 MPH)

Купить Ohana — ABSOLUTE а также выбрать подходящую вам яхту из нашего каталога яхт вам поможет опытный яхтенный брокер Андрей Шестаков. На сегодняшний день компания Shestakov Yacht Sales Inc. имеет большое количество яхт в собственном списке продаж, а также тесно сотрудничает со всеми крупными яхтенными производителями по всему миру.

Для того чтобы купить яхту Ohana — ABSOLUTE а также проконсультироваться по любому вопросу связанному с покупкой, продажей, чартером яхт позвоните по телефону **+7(918)465-66-44**.

ОГЛАВЛЕНИЕ

ОГЛАВЛЕНИЕ	2
ХАРАКТЕРИСТИКИ	6
Обзор	6
Основная информация	6
Размеры	6
Скорость, вместимость и масса	6
Размещение	7
Корпус и палуба	7
Информация о двигателе	7
ПОДРОБНОЕ ОПИСАНИЕ	8
Deck	8
Bow	8
Cockpit	8
Flybridge	9
Technical Equipment	10
Main Deck	10
Galley	11
Lower Deck Access	12
Full Beam Master Cabin	12
Master Head	12
Bow VIP Cabin	13
Central Guest Cabin	13
Central Head	13
Other Equipment	14
\$250,000 in Optional Extras Included!	14
Exclusions	15
Mechanical Disclaimer	15
Disclaimer	16

Исключения	16
Отказ от ответственности	16
ФОТОГРАФИИ	17
Underway - Starboard Forward	17
Underway - Bow	17
Underway - Port Forward	17
Lower Helm	17
Lower Helm	17
Lower Helm and Salon	17
Main Salon	18
Main Salon and Galley	18
Galley	18
Salon Looking Aft	18
Stairs to Staterooms	18
Stairs to Staterooms	18
Master Stateroom	19
Master Stateroom	19
Master Stateroom	19
Master Stateroom	19
Master Stateroom	19
Master Head	19
Master Head	20
VIP Guest Stateroom	20
VIP Guest Stateroom	20
VIP Guest Stateroom	20
VIP Guest Head	21
VIP Guest Stateroom	21
Central Guest Cabin	21
Central Guest Cabin	21

Guest Head	22
Foredeck Sunpad	22
Foredeck Sunpad Headrests	22
Foredeck	22
Foredeck Seating	22
Port Side Deck	22
Starboard Side Deck to aft	23
Starboard Side Deck Aft	23
Helm	23
Helm	23
Helm	23
Helm	23
Helm Seat	24
Flybridge Seating	24
Flybridge Seating	24
Flybridge Seating	24
Flybridge Seating	24
Flybridge	24
Flybridge	25
Flybridge	25
Stairs from Flybridge to Aft Deck	25
Aft Deck	25
Aft Deck	25
Aft Deck	25
Aft Deck	26
Dinghy	26
Dinghy	26
Swim Platform and Dinghy	26
Engine Room	26

Engine Room	26
Engine Room	27
Engine Room	27
Engine Room	27
Engine Room	27
Port Aft Running	27
Stern View Running	27
Starboard Aft Running	28
Starboard Side Running	28
Deck Layouts	28
Port Side Running	28
КОНТАКТЫ	29
Контактная информация	29
Телефоны	29
Время работы	29
Адрес	29

ХАРАКТЕРИСТИКИ

Обзор

JUST REDUCED \$50,000

The "OHANA" has come to the market due to a change in the owners plans. She is the ONLY pre-owned 52' Absolute Navetta available in the entire US today. She is in IMMACULATE condition and ready to cruise anywhere one desires. She was built and has been cared for with an OPEN CHECK BOOK and is loaded with many extras. Please carefully take a look at the listing and do not hesitate to call today. It is a great opportunity for the next buyer to purchase this TURN KEY vessel immediately.

Not for sale to US residents while in US Waters.

Основная информация

Тип судна: Моторная яхта

Модельный год: 2017

Год постройки: 2017

Страна: Bahamas

Верх: Hardtop

Открытая палуба мостика: Да

Кубрик: Да

Размеры

Длина общая: 52' 6" (16.00m)

Ширина: 15' 3" (4.65m)

Макс. осадка: 3' 8" (1.12m)

Скорость, вместимость и масса

Крейс. скорость: 14 Kts. (16 MPH)

Макс. скорость: 25 Kts. (29 MPH)

Водоизмещение: 57320 Pounds

Вместимость воды: 160 Gallons

Объем топливного бака: 528 Gallons

Размещение

Всего кают: 4

Всего ком. состава: 3

Корпус и палуба

Материал корпуса: Fiberglass

Комплектация корпуса: Semi-Displacement

Информация о двигателе

Двигатели: 2

Производитель: Volvo Penta

Модель: D6-IPS 600

Тип двигателя: Inboard

Тип топлива: Diesel

ПОДРОБНОЕ ОПИСАНИЕ

Deck

- Stainless steel railing
- Stempost stainless steel protection cover
- Stainless steel deck apparel
- Stern bollards (two) with fairlead, mid-ship (two) and bow bollards (two) with protection plate
- Bollards (two) at stern for crossing lines
- Raised gunwale
- Storage compartment for boat hook
- Storage compartments in side walkways
- Non-skid side walkways
- Covering side walkways with lighting
- Screens for windscreen and side windows
- White deck and deckhouse
- Windscreen wipers (two)
- Ship-hull in white color with smoke tinted windows
- Fuel loading from both sides with protective teak cover and fuel sump pit

Bow

- Area in the bow for mooring with non-skid floor
- Bow dinette with sun pad housing and glass holders
- Sofa with cream color cushions in quick drainage foam
- Loudspeakers with fixed remote control and local volume adjustment for sound system connected with the radio in Flybridge
- Storage compartments for fenders
- Anchor winch with 21 kg (46 lbs.) zinc-plated anchor and 75 mt (246 ft.) chain
- Anchor windlass with chain counter
- Stainless steel anchor roller
- Self-draining anchor chain locker with hatch for inspection

Cockpit

- Sofa with cream color cushions in quick drainage foam
- Loudspeakers with fixed remote control and local volume adjustment for sound system connected with the radio in Flybridge
- Compartments for mooring lines
- Storage compartment under the stairs

- Grey microfiber ceiling with LED lights
- Solid teak floor and steps
- Courtesy lights
- Stainless steel and plexiglass cockpit access door
- Aft storage compartment
- Platform with boarding ladder
- Hot and cold water shower
- Direct water connection to shore
- Quay power sockets (two) and cable

Flybridge

- Aerodynamic windscreen with the upper outline made of stainless steel
- Adjustable-height plexiglass deflector for Flybridge dashboard
- Sofas (two) in cream color quick drainage foam on the sides of the piloting place with adjustable backrest for sunbathing function
- U-shaped sofa with cream color cushion in quick drainage foam and teak table
- Wet bar with sink, fridge, Corian worktop and storage compartment
- Non-skid floor
- Storage compartment for life-raft
- Aft area that can be provided with loungers with adjustable backrests (extra)
- Loudspeakers
- Storage compartment
- Stairway with fiberglass structure, solid teak steps, stainless steel handrail and courtesy lights
- Flybridge access with hatchway railing
- Flybridge aft area railing

Flybridge Instrument Panel:

- Ergonomic dashboard with anti-glare viewing angle
- 12" GPS display
- Volvo Package Software (cruise control, trip computer, low speed, single lever)
- Maneuvering Joystick
- Electronic and adjustable steering wheel
- Automatic pilot
- Alarms display
- VHF with DSC
- Trim tabs control with position indicator
- Anchor windlass remote control
- Compass
- Fusion Radio with iPod and iPhone slot, local volume control in the flybridge, bow area and cockpit

- Sliding driving seat with fap and cover
- Dashboard cover
- Glass holders and glove compartment
- USB port

Technical Equipment

- Electrical System 120/240V (60Hz)
- Kohler generator 20Kw
- 60,000 BTU Tropical air conditioning with quay docks and dedicated cables
- White engine room
- Inner and external LED lights
- Cablemaster (two - 50A-60Hz) with remote control
- Volvo ACP anti-corrosion kit
- Galvanic Isolators
- Engines room air intakes with air/water separating grilles
- FM200 fire-fighting system with automatic stop engines and generator
- Portable fire extinguishers provided in different areas of the boat
- Safety kit with smoke detection and siren
- Fuel tanks with Crossover Connections (two) and double inlets
- Racor fuel pre-filters with water presence sensor and acoustic signaling on dashboard
- Electric bilge pump for fluid suction
- Use of fire resistant materials for sea water plumbing
- Common drainage system
- Hot and cold water distribution double system with individual centralized shut-off valves
- Deck cleaning with fresh water and quay connection
- Boiler
- Automatic chargers dedicated to service batteries, engines and generator
- Hydraulic trim tabs
- Black water tank with suction on deck
- Black antifouling (propellers not included)
- Propeller rope cutters
- Sacrificial anodes for salt water
- Odor-resistant sanitary pipes
- Fire-retardant and soundproofing covering for engine room
- Deck and hull easily inspectable integrated structure
- Digital terrestrial TV antenna with TV antenna connection cables, satellite wiring and HDMI connection cables

Main Deck

- Straight Canaletto walnut with matt finishing furnishings

- Ivory color leather U-Shaped sofa with straight Canaletto walnut table
- 2 seater leather sofa in ivory color
- Electrical opening window
- Lava color Durmast oak floor
- Ceiling-mounted stainless steel handrail with ivory color leather
- Side smoke tinted windows
- Sliding door fabric curtain
- Venetian blinds for side windows
- Three-leaves smoke tinted glass access door to the hall with two sliding leaves
- Ivory color leatherette coated ceilings with mat lacquered finishing
- Courtesy lights

Main Deck Instrument Panel:

- Leather dashboard with carbon finishing inserts
- 12" GPS display
- Touch screen Volvo 7 EVC
- Volvo Package Software (cruise control, trip computer, low speed, single lever)
- Maneuvering Joystick
- Electronic and adjustable steering wheel
- Automatic pilot
- Alarms display
- VHF with DSC
- Trim tabs control with position indicator
- Anchor windlass remote control
- Compass
- Single sliding leather captain seat with thigh rise fap
- Glass holder
- Footrests in grey lava durmast oak
- USB port

Galley

- Kitchen designed in an "L-Shape" with the hob on a splayed corner with Corian countertop with marble nuances
- Straight Canaletto walnut with matt finishing corner cabinet
- Stainless steel sink with telescopic tap
- Electrical household appliances: combined microwave/grill, pyroceram cooktop with fiddle pans and fridge column with freezer
- Extractor vapors and fumes
- Stainless steel waste bin built-in kitchen countertop
- Ivory color gloss varnished wall cabinets
- Wide straight Canaletto walnut with matt finishing cabinet with dark brown leatherette

inserts opposite to the kitchen

- Lava color Durmast oak floor

Lower Deck Access

- Stairs made of lava color Durmast oak with stainless steel and dark brown leather handrail
- Hallway room with lava color Durmast oak floor
- Walls coated in ivory colored Eco-leather
- Courtesy lights

Full Beam Master Cabin

- Straight Canaletto walnut with matte finishing
- Longitudinal double bed with memory foam mattress and drawers
- Dark brown leather headboard with Straight Canaletto walnut with matte finishing
- Ceiling reading lights
- Straight Canaletto walnut with matte finishing bedside tables with ivory colored leatherette inserts
- Straight Canaletto walnut with matte finishing bedframe
- Straight Canaletto walnut with matte finishing cabinet with cross grains panel doors (five)
- Desk with vanity, mirror with lights and high gloss finishing
- Leather sofa in ivory color
- Walk-in wardrobe with lighting, drawers, shelves and door with mirror inside
- Wide windows and opening portholes (two)
- Ivory colored leatherette wall
- Venetian blinds
- Courtesy lights
- Bathroom access pocket door
- Leatherette coated ceiling
- Rice-color carpet floor
- Wide compartment for washing machine/tumble dryer (extra) housing

Master Head

- Straight Canaletto walnut with matte finishing corner cabinet
- Corian with marbled shades countertop with white ceramic sink, externally platinum chromed
- Wall cabinets with mirror
- Large shower with glass door, lacquered finishings in dark brown color and HPL walls made of high quality dark-wood finishing with grains in relief and hand spray with riser rail
- Opening portholes (two) with roller blinds

- HPL floor in high quality light-wood finishing with grains in relief
- Sliding door

Bow VIP Cabin

- Straight Canaletto walnut with matte finishing furnishings
- Double bed with memory foam mattress and drawers
- Dark brown leather headboard
- Ceiling reading lights
- Straight Canaletto walnut with matte finishing bedside table with ivory leatherette inserts
- Straight Canaletto walnut with matte finishing bedframe
- Straight Canaletto walnut with matte finishing wardrobe with cross grain panels door and mirror inside
- Wide windows with opening portholes (two)
- Hatch with ladder for emergency exit, flyscreen and roller blind
- Venetian blinds
- Courtesy lights
- Leatherette coated ceiling with ivory color gloss varnished finishings
- Rice-color carpet floor

Central Guest Cabin

- Straight Canaletto walnut with matte finishing furnishings
- Single beds (two) with memory foam mattresses
- Dark brown leather headboard and bedside tables with ivory color leatherette insert top
- Laquered ivory-colored bedframe
- Straight Canaletto walnut with matte finishing wardrobe with cross grain panels and door with mirror inside
- Ivory color leatherette walls with mirrors
- Opening portholes (two)
- Venetian blinds
- Courtesy lights
- Leatherette coated ceiling
- Rice-color carpet floor

Central Head

- Straight Canaletto walnut with matte finishing corner cabinet, Corian countertop with white ceramic sink, externally platinum chromed
- Wall cabinets with mirror
- Large shower with glass door, seat, lacquered finishings in dark brown color and HPL walls

made of high quality dark-wood finishing with grains in relief and hand spray with riser rail

- Opening porthole with roller blind
- Access doors (two) from the access room and from the VIP cabin
- HPL floor in high quality light-wood finishing with grains in relief

Other Equipment

- Life ring in housing
- Boat hook
- Fenders with customized covers (six)

\$250,000 in Optional Extras Included!

- **Custom painted hull**
- **Seakeeper 6**
- **Tender Chocks**
- **Entertainment System (Tracvision Satellite System TV6, BOSE System Lifestyle 650)**
- **Illuminated Transom Name**
- **Flybridge Enclosure**
- **Vents for Icemaker**
- **(4) Rod Holders**
- **Extra Key FOBS**
- **Delta Anchor**
- **Dock Box on Flybridge**
- **Viking Liferaft**
- **Garmin Maps Florida & Bahamas**
- **Mooring Boat Hook**
- **Miele Oven**
- **Fusion Amplifier and Wiring**
- **Garmin Wind Indicator**
- **(6) Dimmers**
- **Side and Forward Sonar**
- **Iridium SatPhone Dock/External Antenna/WiFi Hot Spot**
- **GSM Expander**
- **WiFi Hot Spot**
- **Digital Antenna**
- **APC Battery Backup**
- **(4) cameras**
- **TV DVR**
- **Upgrade to TV6 Domes**
- **DISH Network Receiver**
- **(4) Smoke/CO Sensors**

- (3) Apple TVs
- Bluray Player
- Watermaker
- Water Filtration System w/ UV Lamp & Carbon System & Undersink Purifier
- Fuel Polisher
- Oil Exchange System
- Spare Filters
- Spare Engine Parts, Filters, Zincs (remaining)
- Fully Customized 10ft Ribjet

Performance Data - OHANA

RPM	SPEED	GPH
1700	8.5	7
2100	10.8	12
2200	11	15
2400	12	17
2600	12.5	25
2700	13.5	26
2800	15	28
2900	15	31
3000	16	31
3100	17	35
3200	19	39
3300	20.5	42
3400	22.5	43

Exclusions

- Owner's Personal Items

Mechanical Disclaimer

Engine hours are as of the date of the original listing and are a representation of what the listing broker is told by the owner and/or actual reading of the engine hour meters. The broker cannot guarantee the true hours. It is the responsibility of the purchaser and/or his agent to verify engine hours, warranties implied or otherwise and major overhauls as well as all other representations noted on the listing brochure.

Disclaimer

The Company offers the details of this vessel in good faith but cannot guarantee or warrant the accuracy of this information nor warrant the condition of the vessel. A buyer should instruct his agents, or his surveyors, to investigate such details as the buyer desires validated. This vessel is offered subject to prior sale, price change, or withdrawal without notice.

Исключения

При продаже яхты исключаются личные вещи владельца.

Отказ от ответственности

Компания предоставляет описание судна или яхты добросовестно, но не может гарантировать точность этой информации, а также не ручается за техническое состояние. Покупатель должен проинструктировать своих агентов или оценщиков исследовать представленную информацию более подробно, по собственному желанию. Продажа судна или яхты, изменение цены или снятие с продажи будет происходить без предварительного уведомления.

ФОТОГРАФИИ

Underway - Starboard Forward



Underway - Bow



Underway - Port Forward



Lower Helm



Lower Helm



Lower Helm and Salon



Main Salon



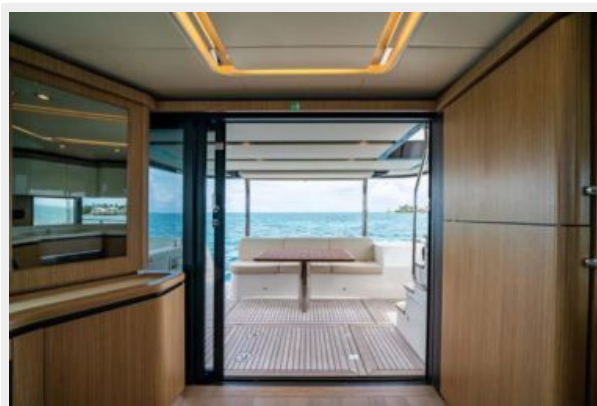
Main Salon and Galley



Galley



Salon Looking Aft



Stairs to Staterooms



Stairs to Staterooms



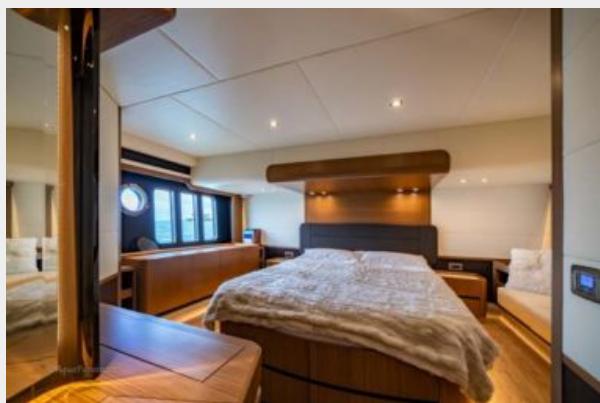
Master Stateroom



Master Stateroom



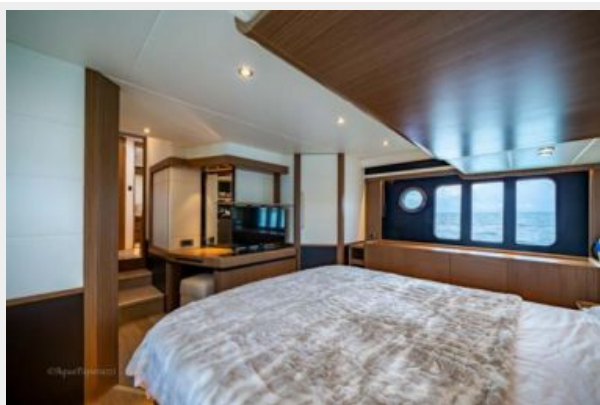
Master Stateroom



Master Stateroom



Master Stateroom



Master Head



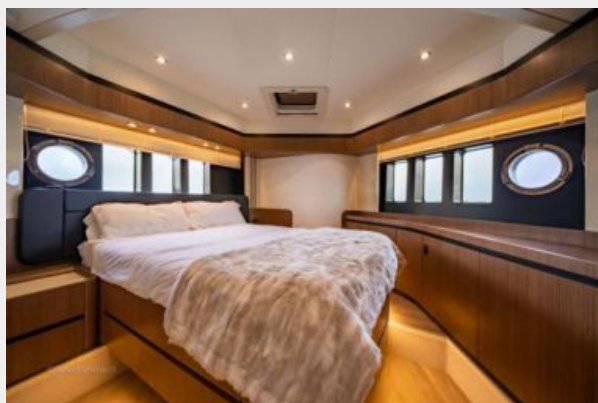
Master Head



VIP Guest Stateroom



VIP Guest Stateroom



VIP Guest Stateroom



VIP Guest Stateroom



VIP Guest Head



Central Guest Cabin



Central Guest Cabin



Guest Head



Foredeck Sunpad



Foredeck Sunpad Headrests



Foredeck



Foredeck Seating



Port Side Deck



Starboard Side Deck to aft



Starboard Side Deck Aft



Helm



Helm



Helm



Helm



Helm Seat



Flybridge Seating



Flybridge Seating



Flybridge Seating



Flybridge Seating



Flybridge



Flybridge



Flybridge



Stairs from Flybridge to Aft Deck



Aft Deck



Aft Deck



Aft Deck



Aft Deck



Dinghy



Dinghy



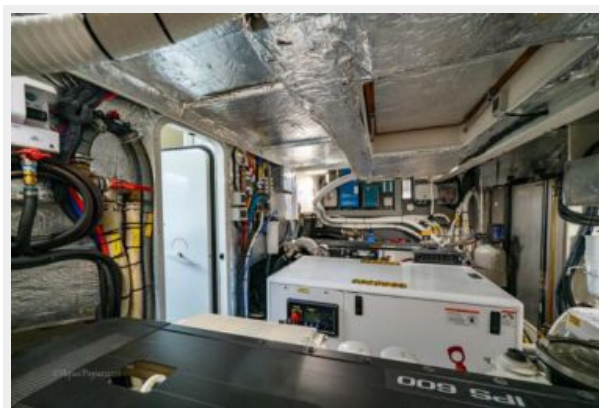
Swim Platform and Dinghy



Engine Room



Engine Room



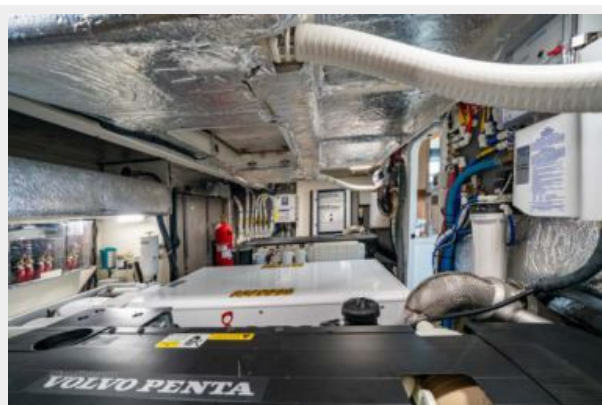
Engine Room



Engine Room



Engine Room



Engine Room



Port Aft Running



Stern View Running



Starboard Aft Running



Starboard Side Running



Port Side Running



Deck Layouts



КОНТАКТЫ

Андрей Шестаков (Andrey Shestakov) – ведущий яхтенный брокер отдела продаж яхт и судов компании Shestakov Yacht Sales Inc. Официальный представитель Shestakov Yacht Sales Inc. для русскоговорящих клиентов в центральном офисе компании в Майами/Форт Лодердейл/Флорида/США.

Контактная информация

Email: andrey@shestakovyachtsales.com

Web: shestakovyachtsales.com

Телефоны

Краснодарский край: **+7(918)465-66-44**

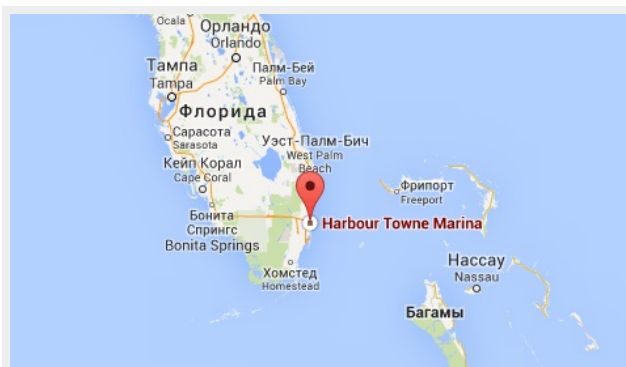
США, Майами, Флорида: **+1(954)274-4435**

Время работы

Понедельник – Суббота: **9:00 - 21:00**
EDT

Воскресенье: **Закрито**

Адрес



Harbour Towne Marina, 850 NE 3rd St,
STE 213, Dania, FL 33004