

POLOLA 2014 MONTE CARLO MCY 70 @ IX⁺ — MONTE CARLO YACHTS



Builder: MONTE CARLO YACHTS

Year Built: 2014

Model: Motor Yacht

Price: PRICE ON APPLICATION

Location: Mexico

LOA: 70' 0" (21.34m)

Beam: 17' 9" (5.41m)

Min Draft: 5' 5" (1.65m)

Max Draft: 5' 7" (1.70m)

Our experienced yacht broker, Andrey Shestakov, will help you choose and buy a yacht that best suits your needs POLOLA 2014 Monte Carlo MCY 70 @ Ixtapa Zihuatanejo — MONTE CARLO YACHTS from our catalogue. Presently, at Shestakov Yacht Sales Inc., we have a wide variety of yachts available on our sale's list. We also work in close contact with all the big yacht manufacturers from all over the world.

If you would like to buy a yacht POLOLA 2014 Monte Carlo MCY 70 @ Ixtapa Zihuatanejo — MONTE CARLO YACHTS or would like help answering any questions concerning purchasing, selling or chartering a yacht, please call +1(954)274-4435

TABLE OF CONTENTS

TABLE OF CONTENTS	2
SPECIFICATIONS	3
Overview	3
Basic Information	3
Dimensions	3
Speed, Capacities and Weight	3
Accommodations	3
Hull and Deck Information	4
Engine Information	4
DETAILED INFORMATION	5
Standard Features	5
Optional Equipment	7
Exclusions	9
Disclaimer	9
PHOTOS	10
CONTACTS	17
Contact details	17
Telephones	17
Office hours	17
Address	17

SPECIFICATIONS

Overview

2014 Monte Carlo MCY 70 @ Ixtapa Zihuatanejo Generators hours: Pot: 1791 Stbd: 2103

Basic Information

Category: Motor Yacht

Sub Category: Flybridge

Model Year: 2014

Year Built: 2014

Country: Mexico

Vessel Top: Hardtop

Fly Bridge: Yes

Cockpit: Yes

Dimensions

LOA: 70' 0" (21.34m)

Beam: 17' 9" (5.41m)

Min Draft: 5' 5" (1.65m)

Max Draft: 5' 7" (1.70m)

Speed, Capacities and Weight

Displacement: 82000 Pounds

Water Capacity: 221 Gallons

Fuel Capacity: 1057 Gallons

Accommodations

Total Cabins: 4

Total Heads: 3

Crew Cabin: 1

Hull and Deck Information

Hull Material: Fiberglass

Engine Information

Engines: 2

Manufacturer: MTU

Model: V8 1200

Engine Type: Inboard

Fuel Type: Diesel

DETAILED INFORMATION

Standard Features

4 Cabins

Galley upstairs

Crew quarters layout with 2 separate crew cabins (2 berths)

Front cockpit layout with full portuguese bridge

Tropical Air Conditioning (including crew quarters - generator upgrade recommended)

Upgrade to 2 x 23 kVA generators

Bow Thruster (electric)

Flaps

Manouvering Joystick ZF POD 4000 version (on main deck and flybridge dashboards)

Searchlight

Engine, Generator oil change system

Engine driven emergency bilge pump

Automatic fire fighting system

Up/down lifting platform

Concealed gangway

Teak floor on cockpit

Teak floor on sideways

Teak floor on bathing platform

Sideways teak hand rails

Teak tables (1 for aft cockpit and 1 for flybridge with fixed legs ; 2 for front cockpit with electrically adjustable legs)

Light system for crystal fashion plates

External cushions

Flag stem

Aft access to engines room /crew quarters

Dock side water inlet

Barbecue on fly bridge

Fridge on flybridge

Ice maker on flybridge

Refrigerator with freezer (190 litres)

Dimmers for main deck saloon and cockpit lights

Bidet in owner's bathroom

Portholes mosquito nets

Wood floor on main deck saloon

Towel sets for bathrooms (2 sets per bathroom)

Tecma seats

LED light system

Crockery, cutlery and glasses (set for 8)

Bose Home Theatre system - Lifestyle V 25 - for main deck saloon

40" LED for main deck saloon (up/down lift system and Blue-Ray DVD player included)

Radio CD player on fly bridge (remote control and speakers also on aft cockpit)

Radio CD player for bow lounge area

Monitoring and Control LCD displays (2x10") on main deck dashboard (including Radar/GPS Chartplotter with Raymarine G-series processor and keyboard)

Radar Chartplotter GPS Raymarine GS 125 (1x12" displays on flybridge dashboard)

Raymarine Radar Antenna (radome 48 nm)

Flaps indicators (main deck and fly bridge dashboards)

Chain counters (main deck and flybridge dashboards)

Raymarine Tridata

Raymarine Auto Pilot Evolution (main deck and flybridge dashboards)

Raymarine VHF DSC (main deck and flybridge dashboards)

Antifouling

Optional Equipment

Electric shore power cable - glendinning system (2 units)

Stern Thruster (electric)

Aft mooring winches

Humphree interceptors with Automatic Trim

Humphree Interceptors with Autolist + Coordinated Turn options - requires Automatic Trim option to be included

Double Racor filters for engines

Racor filters for generator

Water maker 58 US gal/h

Megayachts underwater lights (3)

Concealed lights for front cockpit area

Cradle for tender on bathing platform

Semi-automatic electric watertight door from saloon to starboard sideway

Doors for side access (2)

Teak floor on fly bridge

Additional cleats on aft deck

Additional cleats on sideways

Aft cockpit armchairs (3 units)

Carbon Fiber T-Top on flybridge with soft sliding top (not available with bimini cover)

Front Cockpit cover

Closing for Aft Cockpit (on main deck)

Windows and windscreen external covers

Sunpad, sofas and table covers

Hull and aft side deck painting

Boat name (stainless steel lettering) to be quoted

Boat name (stainless steel lettering with retrolight - price per letter) to be quoted

Miele (or equivalent) appliances (oven, galley extractor, hobs)

Additional separate freezer (65 liters) + 260 liters fridge in lieu of standard refrigerator with freezer

Wine cellar

Dish washer

Washer & dryer

Safe box in owner's cabin

Decor Extra Luxe

Satellite television system - KVH TV6 (including wiring for decoder for main deck saloon and owner's cabin + dummy dome)

32" LED for owner's cabin (with Blue-Ray DVD player)

26" LED and blue ray DVD for VIP cabin

Monitoring and Control LCD displays (2x15") on main deck dashboard (including Radar/GPS

Chartplotter with Raymarine G-series processor and keyboard)

Raymarine Radar Antenna (Open Array 72 nm - super HD 48") Upgrade Package 1: 1 additional Raymarine GS125 12" display on fly bridge with Raymarine

chartplotter processor

Upgrade Package 2: 2 x Raymarine GS165 15,4" display pack for fly bridge - requires Upgrade

Package 1 to be included first

Videocamera (aft cockpit and engine room)

Exclusions

Owner's personal belongings.

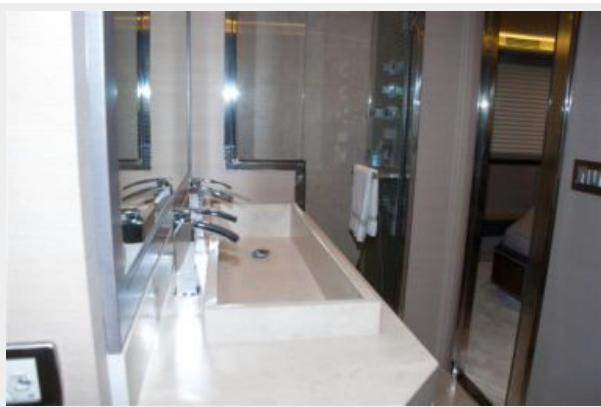
Disclaimer

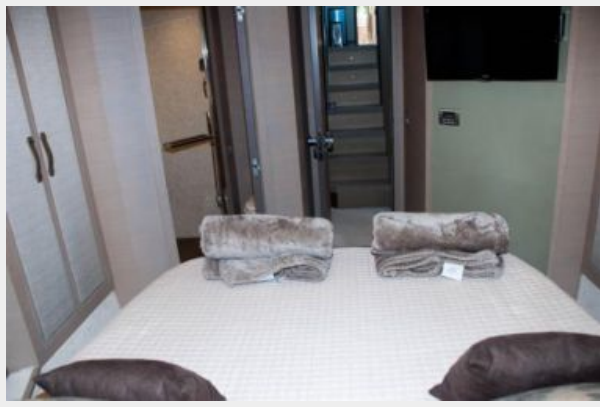
The Company offers the details of this vessel or yacht in good faith but cannot guarantee or warrant the accuracy of this information nor warrant the condition of the vessel. A buyer should instruct his representatives, agents, or his surveyors, to investigate such details as the buyer desires validated. This vessel or yacht is offered subject to prior sale, price change, or withdrawal without notice.

PHOTOS















CONTACTS

Andrey Shestakov, leading yacht broker of the sales department of Shestakov Yacht Sales Inc. Shestakov Yacht Sales Inc., the official representative of the Miami/Fort Lauderdale FL headquarters.

Contact details

Email: andrey@shestakovyachtsales.com

Web: shestakovyachtsales.com/en/

Telephones

USA: +1(954)274-4435

Office hours

Monday – Saturday: **9:00 - 21:00** EDT

Sunday: **closed**

Address



Harbour Towne Marina, 850 NE 3rd St,
STE 213, Dania, FL 33004