

## TOUCHÉ — CUSTOM



**Builder:** CUSTOM

**Year Built:** 2017

**Model:** Motor Yacht

**Price:** PRICE ON APPLICATION

**Location:** France

**LOA:** 37' 9" (11.50m)

**Beam:** 10' 3" (3.10m)

**Min Draft:** 0' 0" (0.00m)

**Max Draft:** 3' 8" (1.10m)

**Cruise Speed:** 30 Kts. (35 MPH)

**Max Speed:** 38 Kts. (44 MPH)

Our experienced yacht broker, Andrey Shestakov, will help you choose and buy a yacht that best suits your needs **TouChé — CUSTOM** from our catalogue. Presently, at Shestakov Yacht Sales Inc., we have a wide variety of yachts available on our sale's list. We also work in close contact with all the big yacht manufacturers from all over the world.

If you would like to buy a yacht **TouChé — CUSTOM** or would like help answering any questions concerning purchasing, selling or chartering a yacht, please call **+1(954)274-4435**

# TABLE OF CONTENTS

TABLE OF CONTENTS	2
SPECIFICATIONS	3
Overview	3
Basic Information	3
Dimensions	3
Speed, Capacities and Weight	4
Accommodations	4
Hull and Deck Information	4
Engine Information	4
DETAILED INFORMATION	5
TOUCHÉ	5
Exclusions	5
Disclaimer	5
PHOTOS	6
CONTACTS	10
Contact details	10
Telephones	10
Office hours	10
Address	10

# SPECIFICATIONS

---

## Overview

---

Classic Essentials & Modern Innovation, Minimalist Hull Lines & Intelligently Designed Interior. Combining durability and cost-effective practicality, this vessel has taken inspiration from both the racing and the aviation industries. TOUCHE' can host up to 8 guests at a time. She is quick, stylish, and practical. Her elegant lines, detailed work and highly sophisticated interior and exterior materials make her appealing to the eye. However, she is not just a pretty face. The two powerful Yanmar diesel engines lift her effortlessly onto the plane. This is due to her deep V-hull, which ensures her guests experience both exhilaration and joy. Built by Sole, the Kymo is very well appointed with top quality accessories, a comfortable aft sunbathing area & swim platform and a stainless-steel anchor. A double cabin also is on board, making it also possible to stay overnight. TOUCHE' interior possesses full standing headroom, a spacious cabin with shower, a well-appointed galley and double berth, with teak decking and leather upholstery which complements the stylish ride.

The Owner has just done a full cosmetic refit in 2021 and the boat is in impeccable conditions. This included touch up paint, deep cleaning and renewal of the furniture and upholstery, custom made kitchen table, new carpets, new drive station, engine room/bilge paint, new GPRS System, antifouling, as well as electrical system service and engine service completed in June 2021.

## Basic Information

---

**Category:** Motor Yacht

**Model Year:** 2017

**Year Built:** 2017

**Country:** France

**Vessel Top:** Bimini Top

**Cockpit:** Yes

## Dimensions

---

**LOA:** 37' 9" (11.50m)

**Beam:** 10' 3" (3.10m)

**Min Draft:** 0' 0" (0.00m)

**Max Draft:** 3' 8" (1.10m)

---

## Speed, Capacities and Weight

---

**Cruise Speed:** 30 Kts. (35 MPH)

**Max Speed:** 38 Kts. (44 MPH)

**Gross Tonnage:** 9 Pounds

**Fuel Capacity:** 132.086026 Gallons

---

## Accommodations

---

**Total Cabins:** 1

**Sleeps:** 2

**Total Heads:** 1

---

## Hull and Deck Information

---

**Hull Material:** GRP

**Hull Configuration:** Planing

---

## Engine Information

---

**Engines:** 2

**Manufacturer:** Yanmar

**Model:** 8VL320

---

# DETAILED INFORMATION

---

## TOUCHÉ

---

Classic Essentials & Modern Innovation, Minimalist Hull Lines & Intelligently Designed Interior. Combining durability and cost-effective practicality, this vessel has taken inspiration from both the racing and the aviation industries. TOUCHE' can host up to 8 guests at a time. She is quick, stylish, and practical. Her elegant lines, detailed work and highly sophisticated interior and exterior materials make her appealing to the eye. However, she is not just a pretty face. The two powerful Yanmar diesel engines lift her effortlessly onto the plane. This is due to her deep V-hull, which ensures her guests experience both exhilaration and joy. Built by Sole, the Kymo is very well appointed with top quality accessories, a comfortable aft sunbathing area & swim platform and a stainless-steel anchor. A double cabin also is on board, making it also possible to stay overnight. TOUCHE' interior possesses full standing headroom, a spacious cabin with shower, a well-appointed galley and double berth, with teak decking and leather upholstery which complements the stylish ride.

The Owner has just done a full cosmetic refit in 2021 and the boat is in impeccable conditions. This included touch up paint, deep cleaning and renewal of the furniture and upholstery, custom made kitchen table, new carpets, new drive station, engine room/bilge paint, new GPRS System, antifouling, as well as electrical system service and engine service completed in June 2021.

## Exclusions

---

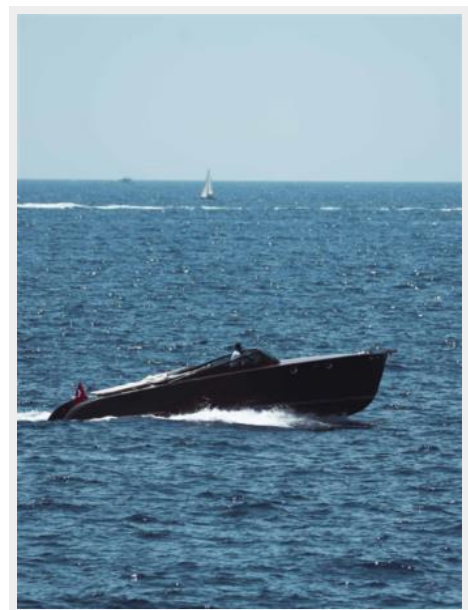
Owner's personal belongings.

## Disclaimer

---

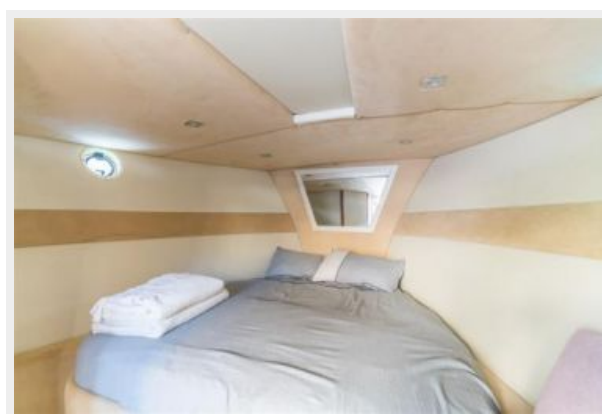
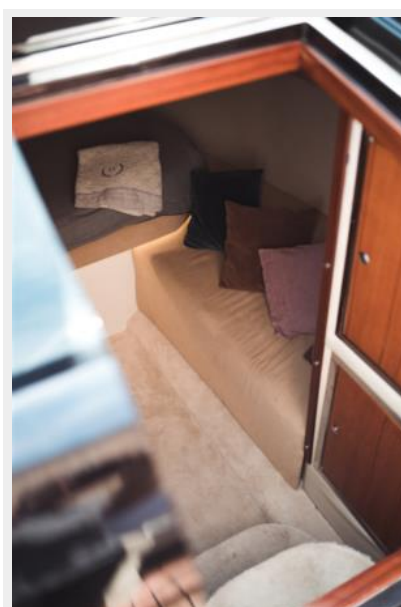
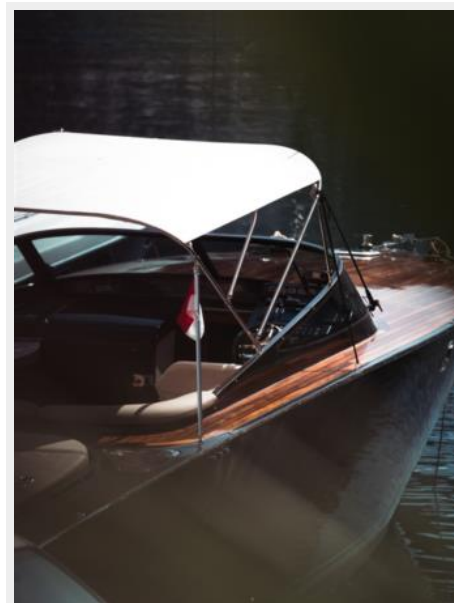
The Company offers the details of this vessel or yacht in good faith but cannot guarantee or warrant the accuracy of this information nor warrant the condition of the vessel. A buyer should instruct his representatives, agents, or his surveyors, to investigate such details as the buyer desires validated. This vessel or yacht is offered subject to prior sale, price change, or withdrawal without notice.

# PHOTOS

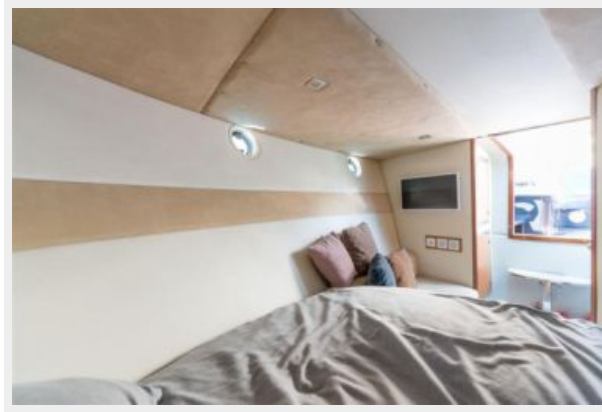












# CONTACTS

---

Andrey Shestakov, leading yacht broker of the sales department of Shestakov Yacht Sales Inc. Shestakov Yacht Sales Inc., the official representative of the Miami/Fort Lauderdale FL headquarters.

## Contact details

---

Email:  
**andrey@shestakovyachtsales.com**

Web: [shestakovyachtsales.com/en/](http://shestakovyachtsales.com/en/)

## Telephones

---

USA: **+1(954)274-4435**

## Office hours

---

Monday – Saturday: **9:00 - 21:00 EDT**

Sunday: **closed**

## Address

---



Harbour Towne Marina, 850 NE 3rd St,  
STE 213, Dania, FL 33004