

ONE MORE — VIKING



Builder: VIKING

Year Built: 2013

Model: Sport Fisherman

Price: PRICE ON APPLICATION

Location: United States

LOA: 55' 0" (16.76m)

Beam: 17' 9" (5.41m)

Max Draft: 5' 1" (1.55m)

Our experienced yacht broker, Andrey Shestakov, will help you choose and buy a yacht that best suits your needs **One More — VIKING** from our catalogue. Presently, at Shestakov Yacht Sales Inc., we have a wide variety of yachts available on our sale's list. We also work in close contact with all the big yacht manufacturers from all over the world.

If you would like to buy a yacht **One More — VIKING** or would like help answering any questions concerning purchasing, selling or chartering a yacht, please call **+1(954)274-4435**

TABLE OF CONTENTS

TABLE OF CONTENTS	2
SPECIFICATIONS	6
Overview	6
Basic Information	6
Dimensions	6
Speed, Capacities and Weight	6
Accommodations	7
Hull and Deck Information	7
Engine Information	7
DETAILED INFORMATION	8
Notable Updates and Options	8
Salon	8
Galley / Dinette	8
Companionway	9
Master Stateroom	9
VIP Stateroom	9
Guest Stateroom	9
Master / Guest Heads	10
Flybridge / Helm	10
Cockpit and Fishing Equipment	10
Electronics	11
Mechanical	11
Electrical	12
Engine Room	12
Exclusions	12
Exclusions	12
Disclaimer	13
PHOTOS	14

2013 55 Viking Convertible - Salon	14
2013 55 Viking Convertible - Profile	14
2013 55 Viking Convertible Salon	14
2013 55 Viking Convertible Salon	14
2013 55 Viking Convertible Salon	14
2013 55 Viking Convertible Salon	14
2013 55 Viking Convertible Dinette	15
2013 55 Viking Convertible Dinette	15
2013 55 Viking Convertible Galley	15
2013 55 Viking Convertible Galley	15
2013 55 Viking Convertible Galley	15
013 55 Viking Convertible Galley	15
2013 55 Viking Convertible Breakers	16
2013 55 Viking Convertible Galley	16
2013 55 Viking Convertible Master Stateroom	16
2013 55 Viking Convertible Master Stateroom	16
2013 55 Viking Convertible Master Stateroom	16
013 55 Viking Convertible Master Stateroom	16
2013 55 Viking Convertible Master Stateroom	17
2013 55 Viking Convertible Master Head	17
2013 55 Viking Convertible Master Head	17
2013 55 Viking Convertible VIP SR	17
2013 55 Viking Convertible VIP Head	17
013 55 Viking Convertible VIP SR	17
2013 55 Viking Convertible VIP Head	18
2013 55 Viking Convertible VIP Head	18
2013 55 Viking Convertible VIP Head	18
2013 55 Viking Convertible Guest Stateroom	18
2013 55 Viking Convertible Guest Stateroom	18

2013 55 Viking Convertible Helm	18
2013 55 Viking Convertible Helm	19
2013 55 Viking Convertible Helm	19
2013 55 Viking Convertible Helm	19
2013 55 Viking Convertible Helm	19
2013 55 Viking Convertible Helm	19
2013 55 Viking Convertible Helm	19
2013 55 Viking Convertible Helm	20
2013 55 Viking Convertible Helm	20
2013 55 Viking Convertible Flybridge	20
2013 55 Viking Convertible Flybridge	20
2013 55 Viking Convertible Cockpit	20
2013 55 Viking Convertible Cockpit	20
2013 55 Viking Convertible Cockpit	21
2013 55 Viking Convertible Cockpit	21
2013 55 Viking Convertible Cockpit	21
2013 55 Viking Convertible Cockpit	21
2013 55 Viking Convertible Cockpit	21
2013 55 Viking Convertible Cockpit	21
2013 55 Viking Convertible Engine Room	22
2013 55 Viking Convertible Generator	22
2013 55 Viking Convertible Water Maker	22
2013 55 Viking Convertible Seakeeper	22
2013 55 Viking Convertible Teaser Reels	22
2013 55 Viking Convertible Bow	22
2013 55 Viking Convertible Port Bow	23
2013 55 Viking Convertible Port Profile	23
2013 55 Viking Convertible Stbd Profile	23
2013 55 Viking Convertible Stbd Profile	23

2013 55 Viking Convertible Starboard Profile	23
2013 55 Viking Convertible Profile	23
2013 55 Viking Convertible Transom Profile	24
2013 55 Viking Convertible Tower	24
2013 55 Viking Convertible Tower	24
2013 55 Viking Convertible Transom Profile	24
CONTACTS	25
Contact details	25
Telephones	25
Office hours	25
Address	25

SPECIFICATIONS

Overview

2013 55 Viking Convertible presented by Galati Yacht Sales in Destin, Florida. The highly sought after second-generation 55' Viking Convertible flaunts grace and style. Packed with fuel and speed, the 55 Viking is a true tournament contender at any venue. One More will further wet your appetite with the addition of a Seakeeper 9, custom teak deck, custom teak mezzanine, tuna tubes, water-maker, and cockpit ice machine. One more has a well-appointed interior with tasteful accents. It also boasts the preferred VIP forward stateroom with cross over layout. The master stateroom is mid-ship down the companionway to starboard. It is important to note that a very desirable feature of the 55 is its spacious 3 stateroom 2 head layout with side by side lower berths situated fore and aft. Each member has a twin, double or queen berth to sleep in. The salon features an L-shaped lounge with storage below. Forward in the salon, the spacious galley with island counter and barstools is forward to starboard. One More's custom helm chairs, bridge seadeck, SAT TV, SAT phone, cockpit rocket launcher, and bow thruster put the finishing touches on this outstanding vessel. This is the 55 you have been waiting for, it has finally hit the market. Don't miss the opportunity to own a best in class, late model Viking with all the right extras!

Basic Information

Category: Sport Fisherman

Model Year: 2013

Year Built: 2013

Country: United States

Coast Guard #: 1249172

Dimensions

LOA: 55' 0" (16.76m)

Beam: 17' 9" (5.41m)

Max Draft: 5' 1" (1.55m)

MFG Length: 55' 0" (16.76m)

Speed, Capacities and Weight

Water Capacity: 225 Gallons

Holding Tank: 100 Gallons

Fuel Capacity: 1615 Gallons

Accommodations

Total Cabins: 3

Sleeps: 6

Total Heads: 2

Hull and Deck Information

Hull Material: Fiberglass

Engine Information

Engines: 2

Manufacturer: MAN

Model: V12 Series 1550

Engine Type: Inboard

Fuel Type: Diesel

DETAILED INFORMATION

Notable Updates and Options

- Palm Beach Tower, New September 2017
- Seakeeper Gyro 9, New September 2017
- Garmin 7212 in tower, New September 2017
- Garmin 7612 in cockpit, New September 2017
- Teak cockpit
- Teak mezzanine deck
- Refrigerated port mezzanine step box
- Refrigerated cockpit step box
- Refrigerated drink box
- Release teak helm pod
- Eskimo ice chipper
- Sea Recovery 1400 GPD watermaker
- Additional fuel tank (205 gallons)
- (4) Underwater lights
- Anchor windlass

Salon

- Air conditioning with reverse cycle heat
- Overhead LED recessed lighting
- High gloss teak finish throughout
- Teak cabinetry with maple finished drawers
- High gloss cocktail table
- Teak valances
- Silhouette blinds
- Custom-wrapped window treatments
- Decorative rope lighting behind valances
- Home theater system with 49" flat-screen TV
- Bose surround sound
- Blu Ray player
- L-shaped lounge with storage underneath

Galley / Dinette

- Full-length custom tile backsplash
- Sub-Zero refrigerator/freezer with varnished teak face
- Electric surface-mounted range

- Microwave/convection oven
- Stainless steel sink with satin nickel faucet
- Garbage disposal
- Dinette table with high gloss finish
- Dinette couch with removable cushions and storage underneath
- Teak-faced storage cabinets and drawers with finished maple interiors

Companionway

- Central vacuum unit connections with accessories
- Laundry center with stackable front loading washer and dryer
- Overhead recessed LED lighting
- Awlgrip bilge areas with access hatches

Master Stateroom

- Air conditioning with reverse cycle heat with temperature control
- Queen-size bed with upgraded pillow top mattress
- Finished maple storage underneath bed
- End tables with drawer and door storage
- Credenza with drawer storage
- Teak hanging locker with finished maple interior
- Upholstered headboard
- Overhead reading lights with separate switches
- Recessed stereo speakers
- 32" HD flat-screen TV

VIP Stateroom

- Air conditioning with reverse cycle heat with temperature control
- Optional crossover stateroom arrangement
- Teak hanging locker with maple-lined interior
- Reading lights with separate switches
- Recessed stereo speakers
- Flat-screen TV
- Overhead LED lighting
- Decorative rope lighting underneath bed and behind valances

Guest Stateroom

- Air conditioning with reverse cycle heat with temperature control
- Side by side twin berth arrangement
- Maple-lined hanging locker with storage drawer underneath
- Overhead LED lighting
- Recessed stereo speakers

Master / Guest Heads

- Air conditioning/heat
- Engineered stone countertops
- Satin nickel hardware
- Amtico flooring
- Electric Sealand series heads
- Overhead recessed LED lights
- Lower vanity with teak face
- Mirrored wall behind upper vanity
- Medicine cabinet with doors
- Stall shower with glass door and nickel hardware
- Satin nickel towel bars and rings

Flybridge / Helm

- Center console walkaround helm
- Custom sea deck on flybridge
- Top-mounted single-lever electronic controls
- Electronic trolling valves
- Freezer box at forward end
- Freshwater outlet
- Furuno RD-33 depth finder
- Companion seat with removable cushions and cover
- Lounge seating to port and starboard with storage underneath
- Refrigerated drink box
- Starboard jump seat facing aft
- 12V stereo with flush-mounted to aft ends of bridge
- Trim tab control switch mounted at console
- VHF and ICOM 604 with antenna and mounts

Cockpit and Fishing Equipment

- Rupp 40' outriggers
- Teaser reels

- Rocket launcher
- Live bait well in sole
- Transom fish box plumbed with Tuna Tube configuration
- Transom door with gate
- (6) Rod holders on aft bridge rail
- (6) Haunch rod holders
- Cockpit tackle center
- Cockpit freezer in mezzanine
- Electric reel outlets
- Cockpit coaming bolsters
- Cockpit dodgers
- Recessed tri-color lighting in flybridge overhang
- Seawater washdown
- Transom swim steps
- 12" Garmin multifunction display

Electronics

- (2) Garmin GPS 8550
- (2) Garmin 17" XGA touch displays
- XM weather, XM radio
- Garmin GSD26 digital color sounder with chirp
- Garmin GHP 12 autopilot
- Garmin 1204 XHD radar
- (2) ICOM M504 VHF radios
- KVH V3 SAT phone with voice and data
- KVH HD 7 SAT TV system
- Class A AIS
- Upgraded Fusion stereo on flybridge
- Custom flybridge lighting
- WIFI throughout
- Simrad 7" Multipurpose display, New Sept 2017

Mechanical

- Freshwater system
- Centralized seawater system
- DC power-assist hydraulic steering, Seastar
- External sea strainers
- Fire suppression system
- Oil changing system
- Racor fuel/water separators

- 220V AC electric water heater

Electrical

- Onan 21.5 kW diesel generator
- Glendinning cablemaster
- 24V DC ship's service throughout
- (2) Battery chargers with thermal cutoff
- Master electrical panel in salon
- 120V duplex receptacles with GFCI throughout

Engine Room

- Twin MAN V12 1550HP Common Rail diesel engines
- 21KW Onan generator
- Fuel priming pumps
- Seakeeper SK9
- 1400 gpd Watermaker
- Eskimo crushed ice machine
- Fuel transfer system
- Oil change system
- Delta T system
- Glendenning cable master
- Back up seawater pump plumbed in parallel
- Jabsco Cockpit Fuel Transfer Pump with quick connect fittings for bladders
- Two 3HP Pentair tuba tube pumps
- Cockpit freezer compressor, new July 2019

Exclusions

- Owner's personal gear and fishing equipment
- Fighting chair
- Epirb
- Life raft

Exclusions

Owner's personal belongings.

Disclaimer

The Company offers the details of this vessel or yacht in good faith but cannot guarantee or warrant the accuracy of this information nor warrant the condition of the vessel. A buyer should instruct his representatives, agents, or his surveyors, to investigate such details as the buyer desires validated. This vessel or yacht is offered subject to prior sale, price change, or withdrawal without notice.

PHOTOS

2013 55 Viking Convertible - Profile



2013 55 Viking Convertible - Salon



2013 55 Viking Convertible Salon



2013 55 Viking Convertible Salon



2013 55 Viking Convertible Salon



2013 55 Viking Convertible Salon



2013 55 Viking Convertible Dinette



2013 55 Viking Convertible Dinette



2013 55 Viking Convertible Galley



2013 55 Viking Convertible Galley



2013 55 Viking Convertible Galley



013 55 Viking Convertible Galley



2013 55 Viking Convertible Galley



2013 55 Viking Convertible Breakers



2013 55 Viking Convertible Master Stateroom



2013 55 Viking Convertible Master Stateroom



2013 55 Viking Convertible Master Stateroom



013 55 Viking Convertible Master Stateroom



2013 55 Viking Convertible Master Stateroom



2013 55 Viking Convertible Master Head



2013 55 Viking Convertible Master Head



2013 55 Viking Convertible VIP SR



013 55 Viking Convertible VIP SR



2013 55 Viking Convertible VIP Head



2013 55 Viking Convertible VIP Head



2013 55 Viking Convertible VIP Head



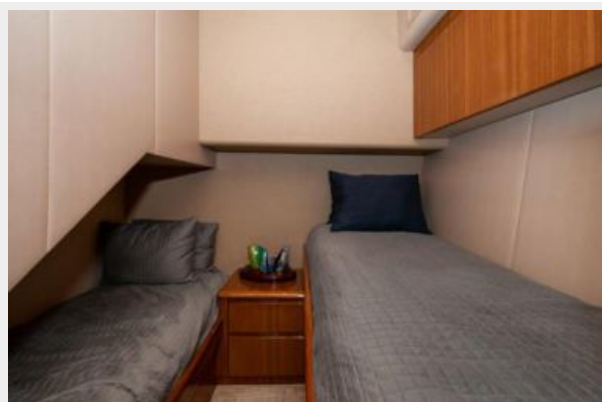
2013 55 Viking Convertible VIP Head



2013 55 Viking Convertible Guest Stateroom



2013 55 Viking Convertible Guest Stateroom



2013 55 Viking Convertible Helm



2013 55 Viking Convertible Helm



2013 55 Viking Convertible Helm



2013 55 Viking Convertible Helm



2013 55 Viking Convertible Helm



2013 55 Viking Convertible Helm



2013 55 Viking Convertible Helm



2013 55 Viking Convertible Helm



2013 55 Viking Convertible Helm



2013 55 Viking Convertible Flybridge



2013 55 Viking Convertible Flybridge



2013 55 Viking Convertible Cockpit



2013 55 Viking Convertible Cockpit



2013 55 Viking Convertible Cockpit



2013 55 Viking Convertible Cockpit



2013 55 Viking Convertible Cockpit



2013 55 Viking Convertible Cockpit



2013 55 Viking Convertible Cockpit



2013 55 Viking Convertible Cockpit



2013 55 Viking Convertible Engine Room



2013 55 Viking Convertible Generator



2013 55 Viking Convertible Water Maker



2013 55 Viking Convertible Seakeeper



2013 55 Viking Convertible Teaser Reels



2013 55 Viking Convertible Bow



2013 55 Viking Convertible Port Profile



2013 55 Viking Convertible Port Bow



2013 55 Viking Convertible Stbd Profile



2013 55 Viking Convertible Stbd Profile



2013 55 Viking Convertible Starboard Profile



2013 55 Viking Convertible Profile



2013 55 Viking Convertible Transom Profile



2013 55 Viking Convertible Tower



2013 55 Viking Convertible Tower



2013 55 Viking Convertible Transom Profile



CONTACTS

Andrey Shestakov, leading yacht broker of the sales department of Shestakov Yacht Sales Inc. Shestakov Yacht Sales Inc., the official representative of the Miami/Fort Lauderdale FL headquarters.

Contact details

Email: andrey@shestakovyachtsales.com

Web: shestakovyachtsales.com/en/

Telephones

USA: +1(954)274-4435

Office hours

Monday – Saturday: **9:00 - 21:00** EDT

Sunday: **closed**

Address



Harbour Towne Marina, 850 NE 3rd St,
STE 213, Dania, FL 33004