

LENA VICTOIRE — GRAND BANKS



Builder: GRAND BANKS

Year Built: 2003

Model: Motor Yacht

Price: PRICE ON APPLICATION

Location: United States

LOA: 43' 3" (13.18m)

Beam: 13' 7" (4.14m)

Min Draft: 4' 2" (1.27m)

Max Draft: 4' 2" (1.27m)

Our experienced yacht broker, Andrey Shestakov, will help you choose and buy a yacht that best suits your needs **Lena Victoire — GRAND BANKS** from our catalogue. Presently, at Shestakov Yacht Sales Inc., we have a wide variety of yachts available on our sale's list. We also work in close contact with all the big yacht manufacturers from all over the world.

If you would like to buy a yacht **Lena Victoire — GRAND BANKS** or would like help answering any questions concerning purchasing, selling or chartering a yacht, please call **+1(954)274-4435**

TABLE OF CONTENTS

TABLE OF CONTENTS	2
SPECIFICATIONS	5
Overview	5
Basic Information	5
Dimensions	5
Speed, Capacities and Weight	5
Accommodations	6
Hull and Deck Information	6
Engine Information	6
DETAILED INFORMATION	7
Interior	7
Salon	7
Galley	7
Master Stateroom	8
Forward Stateroom	8
Electronics-Lower Station	9
Bridge Station	9
Fly Bridge	9
Engine Room	10
Deck	10
Excluded Items from sale:	11
Exclusions	12
Disclaimer	12
PHOTOS	13
Flybridge seating, helm seat, full bimini with enclosure	13
Flybridge aft seating, teak table, teak decks	13
Flybridge helm station with helmsman's chair	13
20190717_112800 lena	13

Aft deck with bench seat, lazarettes, dinghy stowage	14
Flybridge helm station electronics, compass	14
Foredeck with anchor windlass and anchor platform, teak deck	14
Exterior varnish in great condition, SS grab rails	14
Teak decks, storage for lines or fenders, window covers	15
Wide teak sidedecks, stainless steel handrails	15
Full flybridge enclosure, port entry door, high bulwarks	15
Salon looking forward to helm station	15
Dry bar with ice maker aft of lower helm	16
Lower helm with double helmseat, door to side deck	16
Settee and yacht table aft of helm seat, port side settee	16
Looking forward to L galley from starboard settee	16
L galley with upper and lower cabinets, 3 burner range, SS sink with cover	17
3 burner range with cover, storage drawers, refrigerator	17
Companionway looking aft, cupboards and hanging locker	17
Amidships companionway to forward stateroom	17
20190729_145127 lena	18
Forward stateroom v-berth, hanging locker	18
Aft cabin looking forward, hanging lockers, door to shower	18
Aft cabin island queen bed, bureau, hanging locker	18
Aft head with stainless steel sink, marble countertop	19
Aft shower, starboard & forward of berth	19
Twin Cummins engines, Onan generator	19
Engine room wiring	19
Engine room access from saloon	20
Port fuel tank	20
Lena Victoire Arrangement Plan	20
Lena Victoire Engine Rm Plan	20
Lena Victoire Fresh Water System	21

Lena Victoire Electrical Plan	21
CONTACTS	22
Contact details	22
Telephones	22
Office hours	22
Address	22

SPECIFICATIONS

Overview

Lena Victoire is a fine example of a well maintained and equipped Grand Banks 42 Classic Trawler. Tand comfortable, teak interior. The two-cabin layout with the saloon, lower helm, and galley between affords privacy with plenty of room for cooking, dining, and relaxing. The main cabin provides a 360-degree view through large opening windows and there are 2 doors (P & S) from the side decks. The spacious flybridge affords amazing views from the top of the boat, with ample seating shaded by a full bimini with an enclosure for protection during cool weather cruising. Grand Banks is also known for the size and easy access to its engine rooms. Lena Victoire's engine room shows the attention to mechanical maintenance that her owners have insisted upon.

Basic Information

Category: Motor Yacht	Sub Category: Classic
Model Year: 2003	Year Built: 2003
Country: United States	Vessel Top: Bimini Top
Fly Bridge: Yes	

Dimensions

LOA: 43' 3" (13.18m)	LWL: 41' 1" (12.52m)
Beam: 13' 7" (4.14m)	Min Draft: 4' 2" (1.27m)
Max Draft: 4' 2" (1.27m)	

Speed, Capacities and Weight

Displacement: 34000 Pounds	Water Capacity: 270 Gallons
Holding Tank: 30 Gallons	Fuel Capacity: 600 Gallons

Accommodations

Total Cabins: 2

Total Berths: 2

Sleeps: 4

Total Heads: 2

Hull and Deck Information

Hull Material: Fiberglass

Deck Material: Teak

Hull Color: White

Engine Information

Engines: 2

Manufacturer: Cummins

Model: 6CTA8.3M3

Engine Type: Inboard

Fuel Type: Diesel

DETAILED INFORMATION

Interior

General:

Woodwork and finishes in excellent condition. Teak and holly sole throughout, special lighting fixtures in forward, salon and aft cabins, custom fabrics, cedar lined closets, 3 separate air-conditioning systems, screens for all portholes and side windows, and tinted windows.

Salon

Lower Helm Station

Custom yacht table w/flip-up leaves, built-in storage

L-shaped settee on starboard side with storage under

2 chairs

Portside settee with storage under

Entertainment center with 15" Sharp LCD TV, Clarion stereo with CD, XM radio, KVH Tracvision satellite antenna, 2 stereo speakers.

Built-in w/U-line icemaker

Custom drapes

Teak and holly sole w/3 custom blue carpets

Tinted windows w/screens

Custom lighting

Galley

L-configuration

Double stainless steel sinks

Corian countertop

Sharp microwave convection oven

Electric cooktop

AC/DC Refrigerator/freezer

Exhaust fan

Storage cabinets and drawers incl. misc. pots/pans/utensils/silverware/glasses

Master Stateroom

Island queen bed w/mattress, custom bed coverings, storage drawers under bed

Closet with plumbing for washer/dryer

Custom cedar-lined hanging lockers, drawers

Head with vacuflush toilet, Corian countertop, stainless steel sink, tank monitor

Separate stall shower

Custom curtains for ports w/screens

TV jack

Forward Stateroom

Foam V berth with custom bed coverings

Custom curtains

Kewmar 20 hatch with Oceanair blind/screen

Hanging locker, drawers

Head with vacuflush toilet, Corian countertop, stainless sink, tank monitor

Custom curtains for ports w/screens

Electronics-Lower Station

*Furuno Navnet RDP13INT Plotter/Radar

*Raymarine E80 Chartplotter

*Simrad Autopilot

*Icom M502 VHF radio

*Furuno RD30 depth finder

*Sirius SR100 Weather Receiver

*DSM 300 Digital sounder

*Stern facing camera

*Searchlight control

*Navionics chart chips (approx 15)

*Lena Victoire Logbook

Bridge Station

*Searchlight control

*Simrad Autopilot

*Icom M502 VHF radio

*Raymarine E80 Chartplotter (with Sirius weather)

*Furuno 10.5: Nav Net Color Radar plotter

*DSM 300 digital sounder

Fly Bridge

*L-Settee stbd. w/storage under/canvas cover

*Sunbrella Navy Bimini, full enclosure

*Teak grate table w/canvas cover

*Stbd. aft-facing settee w/spare prop locker under

*Custom helmseat

*Port aft-facing settee w/propane locker under

Engine Room

*Twin Cummins 450jhp 6CTA8.3.3M3 diesel engines

*Onan 9kw MDKAL 5006494 Generator with Sound Shield

*Hydraulic steering system

*Four 8D Batteries

*High exhaust temperature alarms

*Glendenning synchronizers dual stations

*Reverso oil change pumps (both engines and genset)

*Fireboy fire protection system

*Racor fuel filters

*Raw water sea strainers

*Prosine 1800 inverter

*Bilge blower

*High water alarm sensor

*Dedicated generator battery

Deck

*Fore and aft connections for 110v 50 amp Shore Power system

*Stainless steel exterior handrails

*Fold-up swim ladder (swim platform mounted)

*Fresh water washdown forward and aft

*Fiberglass spray rails

*12 slat teak swim platform

- *Propane locker inside port flybridge settee
- *Rule T205 12v 2000lb electric dinghy lift system
- *Lofrans windlass w/3 controls
- *Delta anchor with 200-225' 5/8 " BBB chain rode
- *44lb Mantra anchor with 200' 3/8 BBB chain rode
- *Stainless steel rub rail on forward cap rails
- * Non-teak transom
- *Delta T vent system, upsized
- *(2) 50' Shore power cord
- *Shore power splitter (2) 30amp to (1) 50amp
- *10' Avon 311 RIB w/Honda outboard 2hp
- *Misc. power cord accessories
- *Bennett trim tabs upgraded to 48" wide, dual station controls
- *2 Spare props
- *Stbd. aft-facing settee w/spare prop locker
- *Magma stainless steel BBQ

Excluded Items from sale:

- Oriental table lamp in Salon
- Kilim rug in Salon
- 2 Oriental rugs in Master Stateroom
- Settee pillows in Salon (6)
- Lena Victoire Pillow
- Lena Victoire blankets
- Hand bearing compass in Chart table
- VHF hand-held radio

Exclusions

Owner's personal belongings.

Disclaimer

The Company offers the details of this vessel or yacht in good faith but cannot guarantee or warrant the accuracy of this information nor warrant the condition of the vessel. A buyer should instruct his representatives, agents, or his surveyors, to investigate such details as the buyer desires validated. This vessel or yacht is offered subject to prior sale, price change, or withdrawal without notice.

PHOTOS

Flybridge seating, helm seat, full bimini with enclosure



Flybridge aft seating, teak table, teak decks



20190717_112800 lena



Flybridge helm station with helmsman's chair



Flybridge helm station electronics, compass



Aft deck with bench seat, lazarettes, dinghy stowage



Foredeck with anchor windlass and anchor platform, teak deck



Exterior varnish in great condition, SS grab rails



Teak decks, storage for lines or fenders, window covers



Wide teak sidedecks, stainless steel handrails



Full flybridge enclosure, port entry door, high bulwarks



Salon looking forward to helm station



Lower helm with double helmseat, door to side deck



Dry bar with ice maker aft of lower helm



Settee and yacht table aft of helm seat, port side settee



Looking forward to L galley from starboard settee



L galley with upper and lower cabinets, 3 burner range, SS sink with cover



3 burner range with cover, storage drawers, refrigerator



Amidships companionway to forward stateroom



Companionway looking aft, cupboards and hanging locker



20190729_145127 lena

Forward stateroom v-berth, hanging locker



Aft cabin looking forward, hanging lockers, Aft cabin island queen bed, bureau, hanging door to shower



Aft shower, starboard & forward of berth



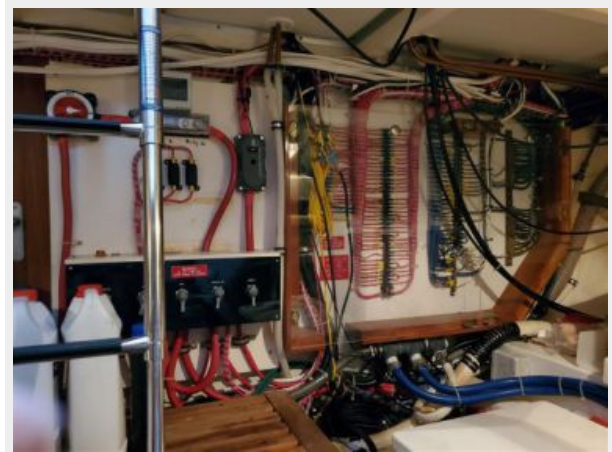
Aft head with stainless steel sink, marble countertop



Twin Cummins engines, Onan generator



Engine room wiring



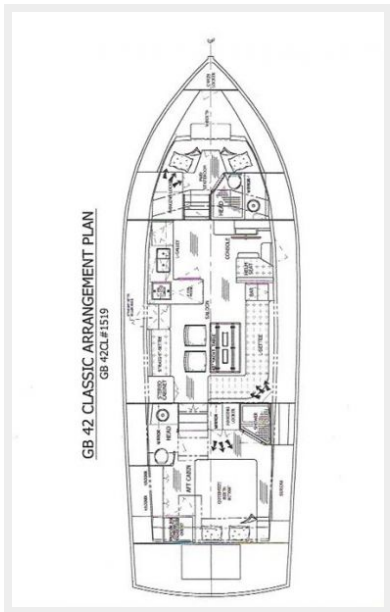
Engine room access from saloon



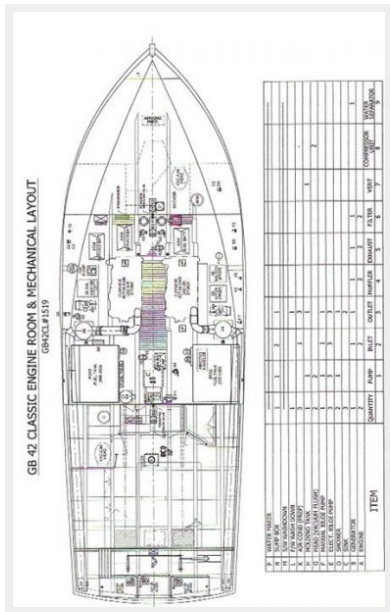
Port fuel tank



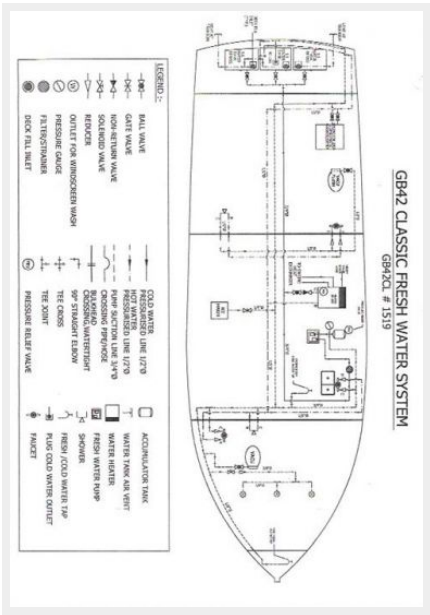
Lena Victoire Arrangement Plan



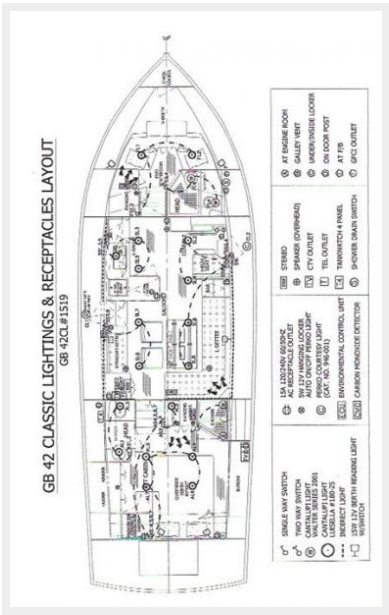
Lena Victoire Engine Rm Plan



Lena Victoire Fresh Water System



Lena Victoire Electrical Plan



CONTACTS

Andrey Shestakov, leading yacht broker of the sales department of Shestakov Yacht Sales Inc. Shestakov Yacht Sales Inc., the official representative of the Miami/Fort Lauderdale FL headquarters.

Contact details

Email: **andrey@shestakovyachtsales.com**

Web: shestakovyachtsales.com/en/

Telephones

USA: **+1(954)274-4435**

Office hours

Monday – Saturday: **9:00 - 21:00 EDT**

Sunday: **closed**

Address



Harbour Towne Marina, 850 NE 3rd St,
STE 213, Dania, FL 33004