

SCUBA SCENE — OCEANCO



Builder: OCEANCO

Year Built: 2010

Model: Motor Yacht

Price: PRICE ON APPLICATION

Location: Egypt

LOA: 143' 0" (43.59m)

Beam: 29' 0" (8.84m)

Max Draft: 15' 0" (4.57m)

Our experienced yacht broker, Andrey Shestakov, will help you choose and buy a yacht that best suits your needs **Scuba Scene — OCEANCO** from our catalogue. Presently, at Shestakov Yacht Sales Inc., we have a wide variety of yachts available on our sale's list. We also work in close contact with all the big yacht manufacturers from all over the world.

If you would like to buy a yacht **Scuba Scene — OCEANCO** or would like help answering any questions concerning purchasing, selling or chartering a yacht, please call **+1(954)274-4435**

TABLE OF CONTENTS

TABLE OF CONTENTS	2
SPECIFICATIONS	3
Overview	3
Basic Information	3
Dimensions	3
Speed, Capacities and Weight	3
Accommodations	3
Hull and Deck Information	4
Engine Information	4
DETAILED INFORMATION	5
Equipment	5
Additional Information	5
Exclusions	6
Disclaimer	6
PHOTOS	7
CONTACTS	16
Contact details	16
Telephones	16
Office hours	16
Address	16

SPECIFICATIONS

Overview

Outstanding Price and Value for a 143 foot Mega Yacht

4 Suites and 10 Twin Rooms

Full Salon - Restaurant and each Room has it's own Mini Bar and AC

Two Zodiac Tenders

Basic Information

Category: Motor Yacht

Sub Category: Flybridge

Model Year: 2010

Year Built: 2010

Country: Egypt

Fly Bridge: Yes

Cockpit: Yes

Dimensions

LOA: 143' 0" (43.59m)

Beam: 29' 0" (8.84m)

Max Draft: 15' 0" (4.57m)

Speed, Capacities and Weight

Displacement: 990000 Pounds

Water Capacity: 5300 Gallons

Holding Tank: 2100 Gallons

Fuel Capacity: 13200 Gallons

Accommodations

Total Cabins: 14

Hull and Deck Information

Hull Material: Steel

Engine Information

Engines: 2

Manufacturer: Cummins

Engine Type: Inboard

Fuel Type: Diesel

DETAILED INFORMATION

Equipment

Accommodations Seating Capacity: 28 Electronics Radio Autopilot DVD player TV set Computer Log-speedometer Repeater(s) Radar Detector CD player Compass VHF GPS Navigation center Cockpit speakers Plotter Radar Depthsounder Inside Equipment Dishwasher Bow thruster Microwave oven Oven Electric head Heating Manual bilge pump Fresh water maker Hot water Battery charger Air conditioning Washing machine Electric bilge pump Sea water pump Refrigerator Deep freezer Air compressor Stern thruster Electrical Equipment Generator Inverter Shore power inlet Electrical Circuit: 220V Outside Equipment/Extras Radar reflector Liferaft Cockpit shower Teak sidedecks Cockpit cushions Teak cockpit Tender Cockpit table Swimming ladder Hydraulic gangway Hydraulic windlass

Additional Information

Built: May 2011

Length: 143 feet / 43 meter, Beam: 29 feet / 9m.

Hull material: Marine Steel, Painted with metallic

Super constructions: wood painted with fiberglass.

Accommodation: 10 double rooms and 4 suites , all AC and included mini bar.

Engines: 2 Marine CUMMINES 1400 HP each 12 cylinder,

Generator: 4 marine silent generators each 80 KW.

Navigation Equipments:

SCANDINE- MARINE RADAR 48MILES, VHF, UHF, GPS, AUTO PILOT, 2 COMPASS, SONAR,

2 water maker 3200 LTR in 24 hours.

Tanks:

Fuel : 50 tons

Water: 30 tons

ICE MAKER 90 KG, per day,

2 DVD & LED TV

2 RIBS ZODIAC

CLASS SOCIETY: RINE REGISTER (IACS CLASS)

2 Stabilizers brand : Johnson Technics.

Engines Fuel Consumption

Cummings Diesel burn 35 Gal. per hour at Cruise speed and 55 Gal. by top speed.

The Main Generators burn : 4 gal a hour and the aux. Generators burn 2,5 Gal. a hour.

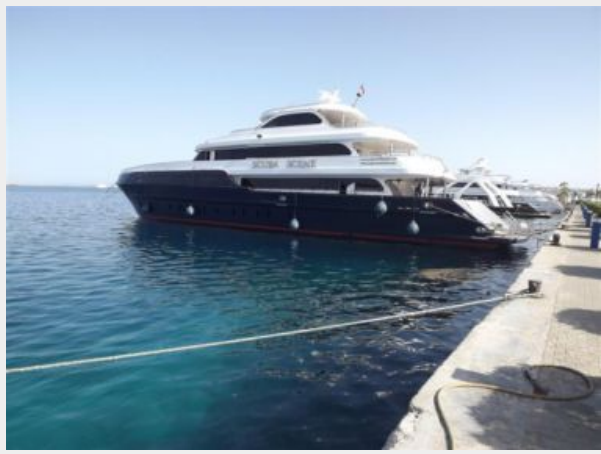
Exclusions

Owner's personal belongings.

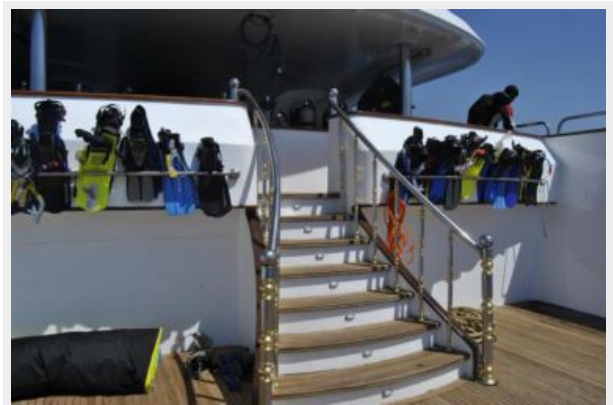
Disclaimer

The Company offers the details of this vessel or yacht in good faith but cannot guarantee or warrant the accuracy of this information nor warrant the condition of the vessel. A buyer should instruct his representatives, agents, or his surveyors, to investigate such details as the buyer desires validated. This vessel or yacht is offered subject to prior sale, price change, or withdrawal without notice.

PHOTOS



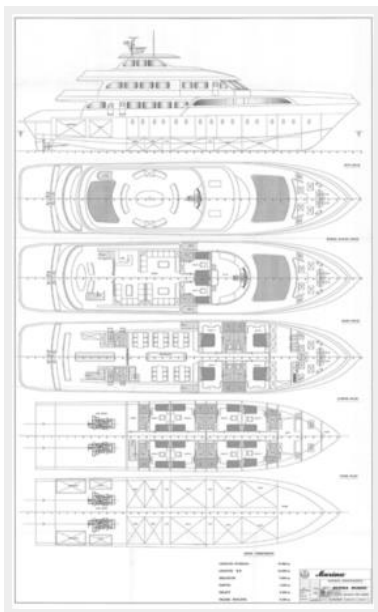


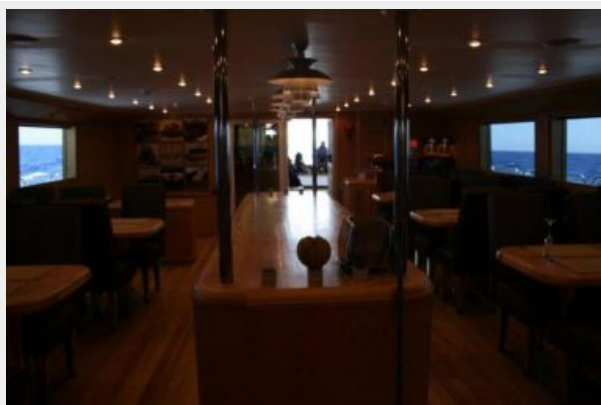


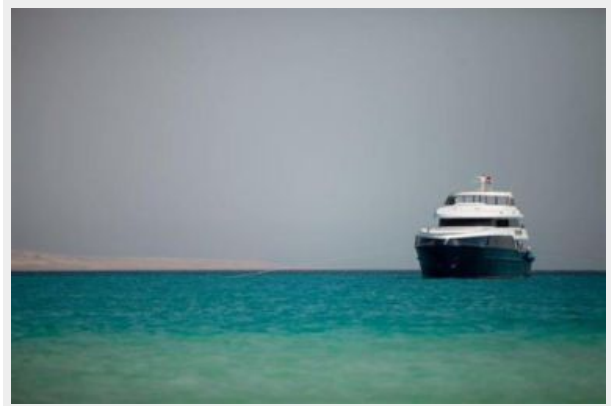












CONTACTS

Andrey Shestakov, leading yacht broker of the sales department of Shestakov Yacht Sales Inc. Shestakov Yacht Sales Inc., the official representative of the Miami/Fort Lauderdale FL headquarters.

Contact details

Email: **andrey@shestakovyachtsales.com**

Web: shestakovyachtsales.com/en/

Telephones

USA: +1(954)274-4435

Office hours

Monday – Saturday: **9:00 - 21:00** EDT

Sunday: **closed**

Address



Harbour Towne Marina, 850 NE 3rd St,
STE 213, Dania, FL 33004