

2012 32 EVERGLADES — EVERGLADES



Судостроитель: EVERGLADES

Длина общая: 32' 0" (9.75m)

Год постройки: 2012

Ширина: 10' 6" (3.20m)

Модель: Яхты с центральной консолью

Цена: ЦЕНА ЯХТЫ ПО ЗАПРОСУ

Местонахождение: United States

Купить 2012 32 Everglades — EVERGLADES а также выбрать подходящую вам яхту из нашего каталога яхт вам поможет опытный яхтенный брокер Андрей Шестаков. На сегодняшний день компания Shestakov Yacht Sales Inc. имеет большое количество яхт в собственном списке продаж, а также тесно сотрудничает со всеми крупными яхтенными производителями по всему миру.

Для того чтобы купить яхту 2012 32 Everglades — EVERGLADES а также проконсультироваться по любому вопросу связанному с покупкой, продажей, чартером яхт позвоните по телефону **+7(918)465-66-44**.

ОГЛАВЛЕНИЕ

ОГЛАВЛЕНИЕ	2
ХАРАКТЕРИСТИКИ	3
Обзор	3
Основная информация	7
Размеры	7
Скорость, вместимость и масса	8
Размещение	8
Корпус и палуба	8
Информация о двигателе	8
ФОТОГРАФИИ	9
КОНТАКТЫ	14
Контактная информация	14
Телефоны	14
Время работы	14
Адрес	14

ХАРАКТЕРИСТИКИ

Обзор

Length 32' 4"

Beam 10' 8"

Dry Weight (Boat Mfr. Pub) 9,500 lbs

Fuel Capacity 306 gal

- Self-bailing cockpit
- Variable deadrise deep v-hull
- NMMA, ABYC, and CE certified
- No wood construction – all composite
- High density, closed cell, structural foam flotation
- Hull laminate – premium gel coat, vinyl-ester barrier coat, vinyl-ester skin coat, polyester print barrier and knitted

biaxial fiberglass

- High density PVC composite transom
- Hull liner and deck mated perfectly for a rigid one-piece construction, adding to its long-term durability
- Hull liner completely finished inside with Class A surface
- Molded-in diamond non-skid
- Rigging troughs – molded-in and oversized for easy access
- ABS backing used to receive self tapping screws and bolts
- Aluminum frame work – custom fabricated in house meeting stringent standards, sand blasted then powder

coated using premium marine grade materials

- Gunwale boards – all hand laid and extra heavy-duty
- Caulking – high grade, non-yellowing, mildew resistant polyurethane (not silicone bath caulk)

- Wire harnesses – manufactured in house using marine grade, tinned copper wire, high grade heat shrink

connectors and waterproof Deutsch plugs

- Circuit protection – circuit breakers or fuses protect all electrical circuits
- Heavy-duty rub rail with 316 stainless steel insert and end caps
- 316-L stainless steel and chrome plated fasteners for additional corrosion and stain resistance
- All hardware bedded or gasketed to resist crevice corrosion
- 316-L cast stainless steel hinges and latches
- Heavy-duty, welded bow and stern eyes, bedded and sealed in polyurethane
- Upholstery – extra-heavy vinyl with acrylic top coat, Tenara™ thread, and anti-mildew backing - adhered to highdensity

plastic backing (no wood) with flow through foam cushions

- Bronze high speed intake strainers
- Painted aluminum 327 gal fuel tank

CONSOLE/HARDTOP

- Fiberglass hardtop with aluminum powder-coated frame includes blue/white LED lights, spreader lights,

electronics box, (5) rod holders, a set of kingfish rod holders

- Canvas life jacket storage in hardtop
- Stereo speakers mounted in the hardtop (2)
- Tempered glass, hydraulic sliding windshield
- Intelligent windshield wiper and washer system that automatically parks before the hydraulic windshield can

move to the down position

- Convenience tray with drink holders

- Console glove box/storage bin
- Stainless steel drink holders (4)
- Console hand rails
- Console power port – 15 A
- 316-L stainless steel steering wheel
- Molded-in fiberglass footrest at the helm
- Fire extinguisher (2)
- China-bowl head with macerator and holding tank – 9.5 gal
- Sink with shower in the head

DECK/COCKPIT

- 17.5 lb stainless steel anchor, 300' rode, 15' chain
- Bow casting platform
- Low-profile aluminum powder-coated bow rails 1 5/16" diameter
- 10" pull-up cleats cast – 316-L stainless steel, through bolted and bedded in polyurethane (6)
- Blue/white LED courtesy lighting with 316 stainless steel bezels
- Stereo speakers mounted in the boat (2)
- 316-L stainless steel drink holders (4)
- Raw-water sink with sprayer
- Sliding workstation drawer
- Cockpit area – 131 sf
- Cockpit coaming bolsters
- Powder coated toe rails
- Lockable transom gate with freeing port
- Retractable boarding ladder in transom with stainless steel grab rail

FISHABILITY

- Abundant space for electronics placement
- Command leaning post workstation
- Cooler capacity – 94 qt
- Circulating livewell with light and 3/8" clear acrylic lid with stainless steel friction hinges and latch – 43 gal
- 316-L stainless steel gunwale flush mounted rod holders bedded and through bolted (12)
- Transom rod holders (6)
- Kingfish rod holders
- Under gunwale power ports – 15 A
- Lockable rod storage
- Under gunwale rod racks - (4) total, (2) on each side
- Taco Grandslam Outrigger package – 18' poles

MECHANICAL/ELECTRICAL

- Auto anchor system – windlass
- Automatic bilge pump (3)
- Bilge pumps – 2,000 gph (1) & 3,700 gph (2)
- High-water alarm
- LED anchor light
- LED navigation lights
- Docking lights
- Ritchie(R) compass

- Stereo – AM/FM/Bluetooth ®/Auxiliary
- Electric horn
- 4 bank battery management system
- Battery charger
- Transom shore power outlet, dockside water- and fresh-water fill
- Fresh-water washdown – 35 gal
- Raw-water washdown
- Electric Lectrotab, twin cylinder, custom stainless steel trim tabs with position indicator and auto retract
- Underwater lights

SEATING

- Bow seating with cushions and storage
- Cushioned forward console seating
- Electric bow table
- Folding stern seats

Основная информация

Тип судна: Яхты с центральной консолью **Модельный год:** 2012

Год постройки: 2012

Страна: United States

Верх: Hardtop

Размеры

Длина общая: 32' 0" (9.75m)

Ширина: 10' 6" (3.20m)

Скорость, вместимость и масса

Объем топливного бака: 300 Gallons

Размещение

Всего ком. состава: 1

Корпус и палуба

Материал корпуса: Fiberglass

Информация о двигателе

Двигатели: 2

Производитель: Yamaha

Модель: 350

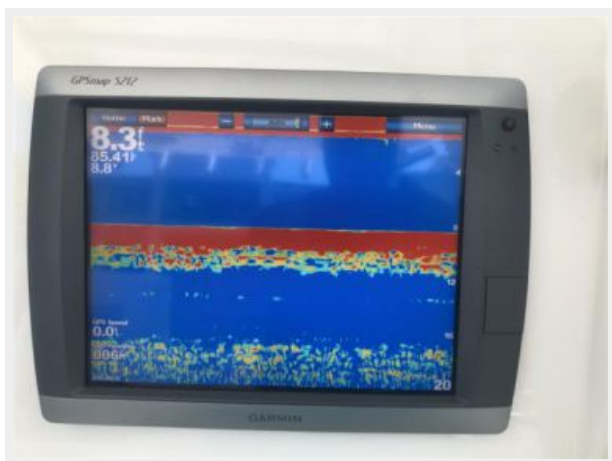
Тип двигателя: Outboard

Тип топлива: Gas

ФОТОГРАФИИ











КОНТАКТЫ

Андрей Шестаков (Andrey Shestakov) – ведущий яхтенный брокер отдела продаж яхт и судов компании Shestakov Yacht Sales Inc. Официальный представитель Shestakov Yacht Sales Inc. для русскоговорящих клиентов в центральном офисе компании в Майами/Форт Лодердейл/Флорида/США.

Контактная информация

Email: andrey@shestakovyachtsales.com

Web: shestakovyachtsales.com

Телефоны

Краснодарский край: **+7(918)465-66-44**

США, Майами, Флорида: **+1(954)274-4435**

Время работы

Понедельник – Суббота: **9:00 - 21:00**
EDT

Воскресенье: **Закрито**

Адрес



Harbour Towne Marina, 850 NE 3rd St,
STE 213, Dania, FL 33004