

K — BROWARD



Builder: BROWARD

Year Built: 1992

Model: Motor Yacht

Price: PRICE ON APPLICATION

Location: United States

LOA: 100' 0" (30.48m)

Beam: 20' 0" (6.10m)

Cruise Speed: 13 Kts. (15 MPH)

Max Speed: 16 Kts. (18 MPH)

Our experienced yacht broker, Andrey Shestakov, will help you choose and buy a yacht that best suits your needs K — BROWARD from our catalogue. Presently, at Shestakov Yacht Sales Inc., we have a wide variety of yachts available on our sale's list. We also work in close contact with all the big yacht manufacturers from all over the world.

If you would like to buy a yacht K — BROWARD or would like help answering any questions concerning purchasing, selling or chartering a yacht, please call +1(954)274-4435

TABLE OF CONTENTS

TABLE OF CONTENTS	2
SPECIFICATIONS	4
Overview	4
Basic Information	4
Dimensions	4
Speed, Capacities and Weight	4
Accommodations	4
Hull and Deck Information	4
Engine Information	5
DETAILED INFORMATION	6
Walkthrough	6
Upgrades	6
Flybridge	7
Galley	7
Salon	7
Accommodations	8
Deck Equipment	9
Tender and Toys	9
Electrical System	9
Electronics and Navigation Equipment	9
Engine and Mechanical	10
Crew Quarters/ Laundry Room	10
Fire and Safety	10
Notables	11
Exclusions	11
Disclaimer	11
PHOTOS	12
CONTACTS	26

Contact details	26
Telephones	26
Office hours	26
Address	26

SPECIFICATIONS

Overview

"K" is an exquisite, captain maintained Broward. Her spacious flybridge is ideal for entertaining, complete with a full wet bar, whether you like large parties or intimate gatherings, K can deliver. Both port and starboard engines have been rebuilt, along with both generators. Her owner has spent close to \$500,000 in upgrades, sparing no expense in maintaining her beauty and grace.

Huge Price Reduction Of \$251,000.!!!!!!! Now -\$899,000.!!!!!!

Basic Information

Category: Motor Yacht

Model Year: 1992

Year Built: 1992

Country: United States

Dimensions

LOA: 100' 0" (30.48m)

Beam: 20' 0" (6.10m)

Speed, Capacities and Weight

Cruise Speed: 13 Kts. (15 MPH)

Max Speed: 16 Kts. (18 MPH)

Water Capacity: 1000 Gallons

Fuel Capacity: 9000 Gallons

Accommodations

Total Cabins: 4

Total Heads: 4

Hull and Deck Information

Hull Material: Aluminum

Engine Information

Engines: 2

Manufacturer: Detroit Diesel

Model: 12V92TA

Engine Type: Inboard

Fuel Type: Diesel

DETAILED INFORMATION

Walkthrough

Entering the large, bright main salon from the aft deck, there is an U-shaped sofa to port with two coffee tables in front and an entertainment console to starboard flanked by two new leather lounge chairs. The large window on both sides and across the stern offer a panoramic view. At the forward end of the room is the dining table with eight chairs and a wet bar.

Forward to starboard, past the day head and the pilot house is the large country-style galley with the galley equipment and storage arrayed along the aft and port counters behind a center island. Forward is a table with a bench seat and chairs. The crew quarters, laundry and engine room access are down the stairs to starboard.

Down a staircase in the main salon are the guest accommodations. The full beam Master Suite is forward with a king berth, his and hers walk in closets and heads. His has a large shower with bench seats and hers has a Jacuzzi/shower combination. Aft to starboard is the VIP stateroom with a queen berth and en-suite head. To port is a double state room with twin berths and a fourth stateroom/office with upper and lower berths that convert into a couch and a large desk. All staterooms have en-suite heads.

The flybridge is accessed by the stairs in the pilot house or from the aft deck. The service and navigation area is forward with an island behind for the JennAir grill, beverage cooler and ice maker. Down either side are long bench seats and a raised, padded sunbathing area is across the aft end. There is a table for al-fresco dining across the aft end with four stools in front and seating on the front edge of the sun bathing platform. The area forward of the table is covered with an awning. Aft is the boat deck, which includes the tender crane, Capella tender and a brand new 2018 waverunner.

Upgrades

- Complete Awlgrip on exterior, extra millage- 4 coats (2018)
- New bottom paint (Nov 2018)
- New air handler- Main salon and staterooms (2016)
- (2) new chilled water chillers- 10 tons
- Teak composite on deck and swim platform (2016)
- Port lights replaced with tempered tinted glass
- New exterior flybridge cushions (2018)
- New LED lighting throughout interior
- Furuno monitor on flybridge (2018)
- New flat screen TV's in all staterooms and main salon
- New soft goods in all staterooms
- All countertops replaced with new granite

- Windlass replaced, new chain, epoxy anchor locker
- New Amtico flooring in galley
- New stabilizer seals (2017)

Flybridge

- JennAir grill
- U-Line fridge w/ icemaker
- Cushion seating all around
- Table seating for 6, AI-fresco dining
- Awning cover
- Sunpad
- Satellite TV and phone- KVH- V3
- Blue accent lights
- 2014 Capella tender- 4S Yamaha 70 Hp
- New 2018 Waverunner- 1 hour

Galley

- GE Cooktop and compact oven
- Kitchen Aide Refrigerator and Freezer (2016)
- GE dishwasher
- GE profile trash compactor
- Whirlpool microwave
- SubZero under counter fridge - salon
- Kitchen Aid icemaker - salon
- U-Line fridge - aft deck
- New granite countertop
- New Amtico flooring
- New stainless steel appliances
- Flatscreen TV
- DVD player

Salon

- New high grade carpet (2018)
- New upholstery on all built-ins
- (2) New leather lounge chairs with Ottoman
- New dining table
- Wetbar
- Panoramic views

- New flatcreen TV
- Sony DVD player
- Niles A/V receiver
- Denon CD changer
- Hafler Amps (2)

Accommodations

Master Stateroom

- Full beam master suite
- King berth
- His and her walk-in closets
- Ensuite his and her heads
- His head- Large shower
- Her head- Jacuzzi/ shower combination
- New flooring
- New soft goods
- New flatscreen TV
- Dvd player

VIP Stateroom

- Queen berth
- Ensuite head
- New flooring
- New soft goods
- New flatscreen TV

Portside Stateroom

- Twin berths
- Ensuite head
- New flooring
- New soft goods
- New flatscreen TV

Fourth Stateroom/ Office

- Upper and lower berths- Converts to a couch
- Large desk
- Ensuite head
- New flooring
- New soft goods

Day Head

- Newly remodeled
- New lighting fixtures
- New sink fixtures

Deck Equipment

- New anchor windlass
- Epoxy anchor locker
- Fjord 250 lb. anchor
- New anchor chain
- Nautical Structures davit
- Marquipt ladder (2014)
- Dock lines and fenders

Tender and Toys

- 2014 Capelli hard bottom tender- 4S Yamaha 70 Hp
- 2 kayaks
- Brand new, 2018 waverunner- 1 hour

Electrical System

- 110/220V AC, 60 Hz, single phase system
- 60kw Phaser/John Deere Generator
- 32kW Kohler generator
- Both generators rebuilt in 2015 (Port- 6613 hours, Starboard- 2257 hours)
- Shore Power: 220V AC, 60 Hz, single phase
- 12v/24v DC system
- Main Engine Start Batteries: (4) 8D (2015)
- GenSet Start Batteries: (2) 4D (2014)
- Emergency Battery Bank: (2) 12v - Constavolt charger
- Separate Comms/Nav Battery Bank

Electronics and Navigation Equipment

- New Furuno monitor
- KVH V-Sat 3 System with wireless (installed 2013)

- 2 x Furuno radar
- 48-mile Furuno radar (installed 2013)
- 6" Danforth compass
- 4" Danforth compass
- Furuno Nav Autopilot w/flybridge remote
- Depthsounder
- Raytheon RN 300 GPS
- Northstar 800 GPS
- Fusion stereo

Engine and Mechanical

- Twin Detroit Diesel 12V92TA main engines
- Port engine- 707 hours (Rebuilt 2015)
- Starboard engine- 2002 hours (Rebuilt 2014)
- New pumps
- ZF BW195 gearboxes; 2.5:1 ratio
- NAIAD 302 Stabilizer system w/ 9 sqft fins
- American bow thruster
- Triple Racor Fuel filters on main engines
- Algae X system
- AquaAir 10-ton air conditioning/ heat system (new chillers 2015)

Crew Quarters/ Laundry Room

Lower level to starboard - Crew Quarters, laundry room, engine room access

- Amtico flooring
- New soft goods
- New flatscreen TV
- Radio/ CD player

'K' offers a unique separate laundry room

Fire and Safety

- AIS
- Ghost alarm system
- 45lb Halon cylinder for engine room fixed fire fighting (serviced 2014)
- Fire extinguishers throughout (serviced 2014)

- (2) life rings
- USCG Safety package

Notables

- New teak table on aft deck
- Separate second laundry room with counter and storage space- before aft master stateroom

Exclusions

Owner's personal belongings.

Disclaimer

The Company offers the details of this vessel or yacht in good faith but cannot guarantee or warrant the accuracy of this information nor warrant the condition of the vessel. A buyer should instruct his representatives, agents, or his surveyors, to investigate such details as the buyer desires validated. This vessel or yacht is offered subject to prior sale, price change, or withdrawal without notice.

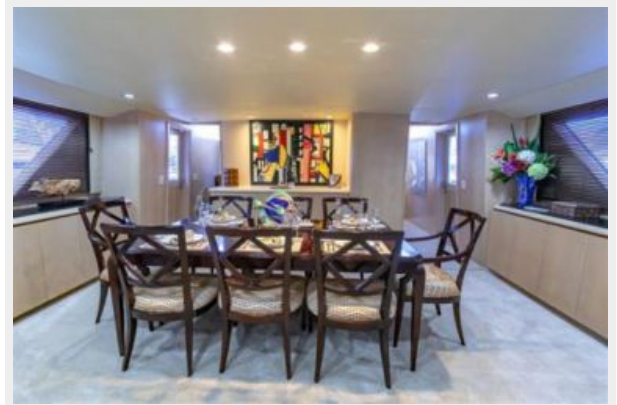
PHOTOS

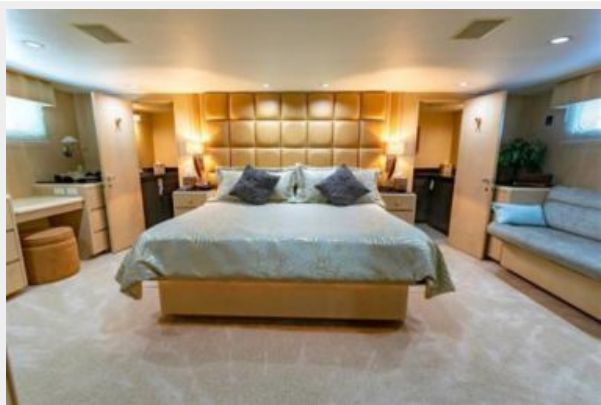




























CONTACTS

Andrey Shestakov, leading yacht broker of the sales department of Shestakov Yacht Sales Inc. Shestakov Yacht Sales Inc., the official representative of the Miami/Fort Lauderdale FL headquarters.

Contact details

Email: andrey@shestakovyachtsales.com

Web: shestakovyachtsales.com/en/

Telephones

USA: +1(954)274-4435

Office hours

Monday – Saturday: **9:00 - 21:00** EDT

Sunday: **closed**

Address



Harbour Towne Marina, 850 NE 3rd St,
STE 213, Dania, FL 33004