

K — BROWARD



Судостроитель: BROWARD

Год постройки: 1992

Модель: Моторная яхта

Цена: **ЦЕНА ЯХТЫ ПО ЗАПРОСУ**

Местонахождение: United States

Длина общая: 100' 0" (30.48m)

Ширина: 20' 0" (6.10m)

Крейс. скорость: 13 Kts. (15 MPH)

Макс. скорость: 16 Kts. (18 MPH)

Купить **K — BROWARD** а также выбрать подходящую вам яхту из нашего каталога яхт вам поможет опытный яхтенный брокер Андрей Шестаков. На сегодняшний день компания **Shestakov Yacht Sales Inc.** имеет большое количество яхт в собственном списке продаж, а также тесно сотрудничает со всеми крупными яхтенными производителями по всему миру.

Для того чтобы купить яхту **K — BROWARD** а также проконсультироваться по любому вопросу связанному с покупкой, продажей, чартером яхт позвоните по телефону **+7(918)465-66-44**.

ОГЛАВЛЕНИЕ

ОГЛАВЛЕНИЕ	2
ХАРАКТЕРИСТИКИ	4
Обзор	4
Основная информация	4
Размеры	4
Скорость, вместимость и масса	4
Размещение	4
Корпус и палуба	4
Информация о двигателе	5
ПОДРОБНОЕ ОПИСАНИЕ	6
Walkthrough	6
Upgrades	6
Flybridge	7
Galley	7
Salon	7
Accommodations	8
Deck Equipment	9
Tender and Toys	9
Electrical System	9
Electronics and Navigation Equipment	9
Engine and Mechanical	10
Crew Quarters/ Laundry Room	10
Fire and Safety	10
Notables	11
Исключения	11
Отказ от ответственности	11
ФОТОГРАФИИ	12
КОНТАКТЫ	26

Контактная информация	26
Телефоны	26
Время работы	26
Адрес	26

ХАРАКТЕРИСТИКИ

Обзор

"K" is an exquisite, captain maintained Broward. Her spacious flybridge is ideal for entertaining, complete with a full wet bar, whether you like large parties or intimate gatherings, K can deliver. Both port and starboard engines have been rebuilt, along with both generators. Her owner has spent close to \$500,000 in upgrades, sparing no expense in maintaining her beauty and grace.

Huge Price Reduction Of \$251,000.!!!!!!!!! Now -\$899,000.!!!!!!

Основная информация

Тип судна: Моторная яхта

Модельный год: 1992

Год постройки: 1992

Страна: United States

Размеры

Длина общая: 100' 0" (30.48m)

Ширина: 20' 0" (6.10m)

Скорость, вместимость и масса

Крейс. скорость: 13 Kts. (15 MPH)

Макс. скорость: 16 Kts. (18 MPH)

Вместимость воды: 1000 Gallons

Объем топливного бака: 9000 Gallons

Размещение

Всего кают: 4

Всего ком. состава: 4

Корпус и палуба

Материал корпуса: Aluminum

Информация о двигателе

Двигатели: 2

Производитель: Detroit Diesel

Модель: 12V92TA

Тип двигателя: Inboard

Тип топлива: Diesel

ПОДРОБНОЕ ОПИСАНИЕ

Walkthrough

Entering the large, bright main salon from the aft deck, there is an U-shaped sofa to port with two coffee tables in front and an entertainment console to starboard flanked by two new leather lounge chairs. The large window on both sides and across the stern offer a panoramic view. At the forward end of the room is the dining table with eight chairs and a wet bar.

Forward to starboard, past the day head and the pilot house is the large country-style galley with the galley equipment and storage arrayed along the aft and port counters behind a center island. Forward is a table with a bench seat and chairs. The crew quarters, laundry and engine room access are down the stairs to starboard.

Down a staircase in the main salon are the guest accommodations. The full beam Master Suite is forward with a king berth, his and hers walk in closets and heads. His has a large shower with bench seats and hers has a Jacuzzi/shower combination. Aft to starboard is the VIP stateroom with a queen berth and en-suite head. To port is a double state room with twin berths and a fourth stateroom/office with upper and lower berths that convert into a couch and a large desk. All staterooms have en-suite heads.

The flybridge is accessed by the stairs in the pilot house or from the aft deck. The service and navigation area is forward with an island behind for the JennAir grill, beverage cooler and ice maker. Down either side are long bench seats and a raised, padded sunbathing area is across the aft end. There is a table for al-fresco dining across the aft end with four stools in front and seating on the front edge of the sun bathing platform. The area forward of the table is covered with an awning. Aft is the boat deck, which includes the tender crane, Capella tender and a brand new 2018 waverunner.

Upgrades

- Complete Awlgrip on exterior, extra millage- 4 coats (2018)
- New bottom paint (Nov 2018)
- New air handler- Main salon and staterooms (2016)
- (2) new chilled water chillers- 10 tons
- Teak composite on deck and swim platform (2016)
- Port lights replaced with tempered tinted glass
- New exterior flybridge cushions (2018)
- New LED lighting throughout interior
- Furuno monitor on flybridge (2018)
- New flat screen TV's in all staterooms and main salon
- New soft goods in all staterooms
- All countertops replaced with new granite

- Windlass replaced, new chain, epoxy anchor locker
- New Amtico flooring in galley
- New stabilizer seals (2017)

Flybridge

- JennAir grill
- U-Line fridge w/ icemaker
- Cushion seating all around
- Table seating for 6, AI-fresco dining
- Awning cover
- Sunpad
- Satellite TV and phone- KVH- V3
- Blue accent lights
- 2014 Capella tender- 4S Yamaha 70 Hp
- New 2018 Waverunner- 1 hour

Galley

- GE Cooktop and compact oven
- Kitchen Aide Refrigerator and Freezer (2016)
- GE dishwasher
- GE profile trash compactor
- Whirlpool microwave
- SubZero under counter fridge - salon
- Kitchen Aid icemaker - salon
- U-Line fridge - aft deck
- New granite countertop
- New Amtico flooring
- New stainless steel appliances
- Flatscreen TV
- DVD player

Salon

- New high grade carpet (2018)
- New upholstery on all built-ins
- (2) New leather lounge chairs with Ottoman
- New dining table
- Wetbar
- Panoramic views

- New flatcreen TV
- Sony DVD player
- Niles A/V receiver
- Denon CD changer
- Hafler Amps (2)

Accommodations

Master Stateroom

- Full beam master suite
- King berth
- His and her walk-in closets
- Ensuite his and her heads
- His head- Large shower
- Her head- Jacuzzi/ shower combination
- New flooring
- New soft goods
- New flatscreen TV
- Dvd player

VIP Stateroom

- Queen berth
- Ensuite head
- New flooring
- New soft goods
- New flatscreen TV

Portside Stateroom

- Twin berths
- Ensuite head
- New flooring
- New soft goods
- New flatscreen TV

Fourth Stateroom/ Office

- Upper and lower berths- Converts to a couch
- Large desk
- Ensuite head
- New flooring
- New soft goods

Day Head

- Newly remodeled
- New lighting fixtures
- New sink fixtures

Deck Equipment

- New anchor windlass
- Epoxy anchor locker
- Fjord 250 lb. anchor
- New anchor chain
- Nautical Structures davit
- Marquipt ladder (2014)
- Dock lines and fenders

Tender and Toys

- 2014 Capelli hard bottom tender- 4S Yamaha 70 Hp
- 2 kayaks
- Brand new, 2018 waverunner- 1 hour

Electrical System

- 110/220V AC, 60 Hz, single phase system
- 60kw Phaser/John Deere Generator
- 32kW Kohler generator
- Both generators rebuilt in 2015 (Port- 6613 hours, Starboard- 2257 hours)
- Shore Power: 220V AC, 60 Hz, single phase
- 12v/24v DC system
- Main Engine Start Batteries: (4) 8D (2015)
- GenSet Start Batteries: (2) 4D (2014)
- Emergency Battery Bank: (2) 12v - Constavolt charger
- Separate Comms/Nav Battery Bank

Electronics and Navigation Equipment

- New Furuno monitor
- KVH V-Sat 3 System with wireless (installed 2013)

- 2 x Furuno radar
- 48-mile Furuno radar (installed 2013)
- 6" Danforth compass
- 4" Danforth compass
- Furuno Nav Autopilot w/flybridge remote
- Depthsounder
- Raytheon RN 300 GPS
- Northstar 800 GPS
- Fusion stereo

Engine and Mechanical

- Twin Detroit Diesel 12V92TA main engines
- Port engine- 707 hours (Rebuilt 2015)
- Starboard engine- 2002 hours (Rebuilt 2014)
- New pumps
- ZF BW195 gearboxes; 2.5:1 ratio
- NAIAD 302 Stabilizer system w/ 9 sqft fins
- American bow thruster
- Triple Racor Fuel filters on main engines
- Algae X system
- AquaAir 10-ton air conditioning/ heat system (new chillers 2015)

Crew Quarters/ Laundry Room

Lower level to starboard - Crew Quarters, laundry room, engine room access

- Amtico flooring
- New soft goods
- New flatscreen TV
- Radio/ CD player

'K' offers a unique separate laundry room

Fire and Safety

- AIS
- Ghost alarm system
- 45lb Halon cylinder for engine room fixed fire fighting (serviced 2014)
- Fire extinguishers throughout (serviced 2014)

- (2) life rings
- USCG Safety package

Notables

- New teak table on aft deck
- Separate second laundry room with counter and storage space- before aft master stateroom

Исключения

При продаже яхты исключаются личные вещи владельца.

Отказ от ответственности

Компания предоставляет описание судна или яхты добросовестно, но не может гарантировать точность этой информации, а также не ручается за техническое состояние. Покупатель должен проинструктировать своих агентов или оценщиков исследовать представленную информацию более подробно, по собственному желанию. Продажа судна или яхты, изменение цены или снятие с продажи будет происходить без предварительного уведомления.

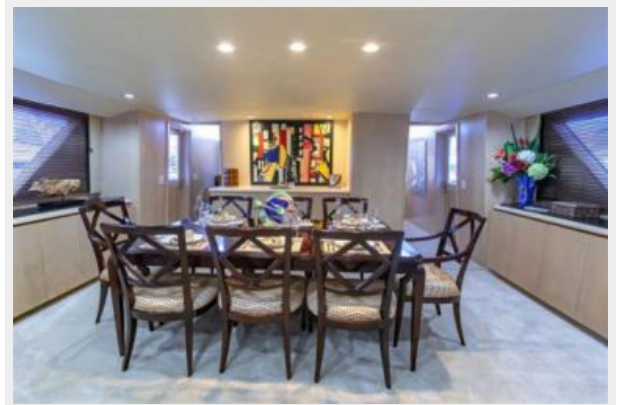
ФОТОГРАФИИ

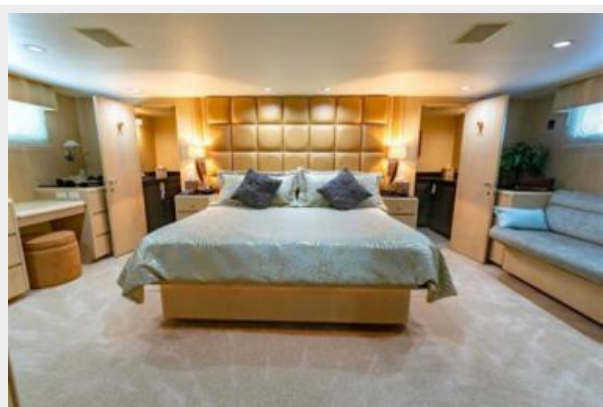










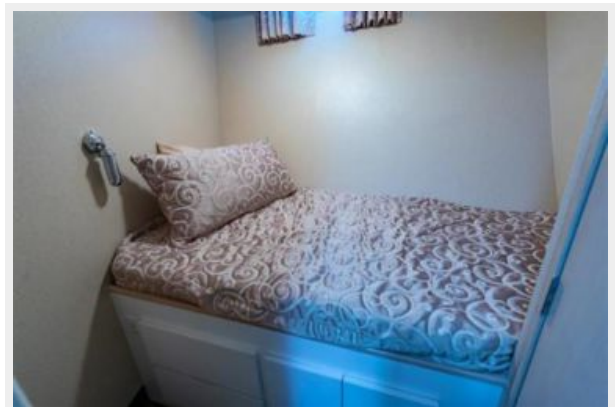


















КОНТАКТЫ

Андрей Шестаков (Andrey Shestakov) – ведущий яхтенный брокер отдела продаж яхт и судов компании Shestakov Yacht Sales Inc. Официальный представитель Shestakov Yacht Sales Inc. для русскоговорящих клиентов в центральном офисе компании в Майами/Форт Лодердейл/Флорида/США.

Контактная информация

Email: andrey@shestakovyachtsales.com

Web: shestakovyachtsales.com

Телефоны

Краснодарский край: **+7(918)465-66-44**

США, Майами, Флорида: **+1(954)274-4435**

Время работы

Понедельник – Суббота: **9:00 - 21:00**
EDT

Воскресенье: **Закрито**

Адрес



Harbour Towne Marina, 850 NE 3rd St,
STE 213, Dania, FL 33004