

CYNFUL — SEA RAY



Builder: [SEA RAY](#)

Year Built: 2004

Model: Motor Yacht

Price: PRICE ON APPLICATION

Location: United States

LOA: 39' 0" (11.89m)

Beam: 14' 3" (4.34m)

Max Draft: 3' 0" (0.91m)

Our experienced yacht broker, Andrey Shestakov, will help you choose and buy a yacht that best suits your needs **Cynful — SEA RAY** from our catalogue. Presently, at Shestakov Yacht Sales Inc., we have a wide variety of yachts available on our sale's list. We also work in close contact with all the big yacht manufacturers from all over the world.

If you would like to buy a yacht **Cynful — SEA RAY** or would like help answering any questions concerning purchasing, selling or chartering a yacht, please call **+1(954)274-4435**

TABLE OF CONTENTS

TABLE OF CONTENTS	2
SPECIFICATIONS	5
Overview	5
Basic Information	5
Dimensions	6
Speed, Capacities and Weight	6
Accommodations	6
Hull and Deck Information	6
Engine Information	6
DETAILED INFORMATION	7
Accommodations and Layout	7
Electronics & Navigation	7
Exclusions	8
Disclaimer	8
PHOTOS	9
2	9
3	9
4	9
5	9
6	9
7	9
8	10
9	10
10	10
11	10
12	10
13	10
14	11

15	11
16	11
17	11
18	11
19	11
20	12
21	12
23	12
22	12
24	12
25	12
26	13
27	13
28	13
29	13
30	14
31	14
33	14
32	14
34	15
35	15
36	15
37	15
39	15
38	15
41	16
40	16
43	16
42	16

44	17
45	17
46	17
47	17
CONTACTS	18
Contact details	18
Telephones	18
Office hours	18
Address	18

SPECIFICATIONS

Overview

"Cynful" is an exceptional yacht that has low hour Cummins Diesels, Updated Garmin Electronics, Bow Thruster and more! Her two stateroom, two head layout (both with stall showers) provides an incredible amount of room for cruising with friends and family. With a full hardtop and windshield providing minimum "canvas hassles" and an air conditioned and heated helm with great sight lines, "Cynful" is easy to operate and a pleasure to run!

Updates and Features Include:

- **Full Cummins Service Including Removal and Cleaning of Heat Exchangers, After Coolers, Gear Coolers and Fuel Coolers! - 2018**
- **New Fusion Stereo, Speakers and Subwoofer - 2018**
- **New Garmin 7612xsv Color Touchscreen Display, Chartplotter and GPS -2018**
- **New Garmin GMR 18HD 36NM Radar**
- **Raymarine Autopilot**
- **Bow Thruster**
- **Remote Windlass**
- **Propellers Tuned and Reconditioned -2018**
- **New Overhead Hatch in Hardtop - 2018**
- **Spare Propellers**
- **Replacement Hose Kit with All Hoses, Clamps and Impellers**
- **Back Up Filters, Belt Tensioner Pulleys, Racor Filters, etc.**
- **All Batteries Replaced - June of 2019**
- **All New Zincs - June of 2019**
- **Updated Canvas**
- **Freshly Waxed and Detailed**
-

Basic Information

Category: Motor Yacht

Sub Category: Aft Cabin

Model Year: 2004

Year Built: 2004

Country: United States

Dimensions

LOA: 39' 0" (11.89m)

LOD: 41' 9" (12.73m)

Beam: 14' 3" (4.34m)

Max Draft: 3' 0" (0.91m)

Speed, Capacities and Weight

Displacement: 26500 Pounds

Water Capacity: 100 Gallons

Holding Tank: 54 Gallons

Fuel Capacity: 300 Gallons

Accommodations

Total Cabins: 2

Hull and Deck Information

Hull Material: Fiberglass

Engine Information

Engines: 2

Manufacturer: Cummins

Model: 480CE

Engine Type: Inboard

Fuel Type: Diesel

DETAILED INFORMATION

Accommodations and Layout

"Cynful" is a very nice example of the popular Sea Ray 39/40 Motoryacht. The flush deck design of this boat provides a single level aft deck and helm area that keeps the captain social with their guest. The single exterior level design also creates easy to navigate walk around side decks making access to the bow and line handling a breeze. The helm area and aft deck are protected by a hardtop and full windshield so canvas is minimal and the area is air conditioned and heated. The aft deck has a built in bench seat with storage, wetbar with sink and refrigerator. The helm has a full suite of electronics and site lines are good in all directions. Moving into the cabin you will find a bright and open salon with beautiful cherry wood cabinetry complimented by neutral carpet and port and starboard ultra leather settees. A high gloss table with two stools provides additional seating and dining. The galley has hardwood floors, large refrigerator and freezer and abundant cabinet and drawer storage. A washer and dryer along with a guest head with shower is forward and the guest stateroom is located in the bow. The master stateroom is privately located aft of the salon and has a walk around queen berth and a split head with separate walk in shower.

Electronics & Navigation

- New Garmin 7612xsv Color Touchscreen Display Chartplotter/GPS
- New Garmin 18 HD Radome Radar
- Raymarine Autopilot
- Raymarine VHF w/ External Speaker
- Raymarine RN300 GPS
- Vetus Bow Thruster
- Cummins Vessel View Display
- Sea Ray Vessel Monitoring System
- ACR Remote Spotlight
- Trim Tabs
- Compass
- Full Analog Gauges
- Wood Grain Tilt Steering Wheel
- Wood Grain Dash Panels
- Fireboy Automatic Fire Extinguishing System Control
- Fusion Stereo Remote at Helm
- Synchronizer
- Slow Vessel Mode
- Cruise Control
- Helm 12V Outlet
- Power Windshield Vent

Exclusions

Owner's personal belongings.

Disclaimer

The Company offers the details of this vessel or yacht in good faith but cannot guarantee or warrant the accuracy of this information nor warrant the condition of the vessel. A buyer should instruct his representatives, agents, or his surveyors, to investigate such details as the buyer desires validated. This vessel or yacht is offered subject to prior sale, price change, or withdrawal without notice.

PHOTOS

2



3



4



5



6



7



8



9



10



11



12



13



14



15



16



17



18



19



20



21



22



23



24



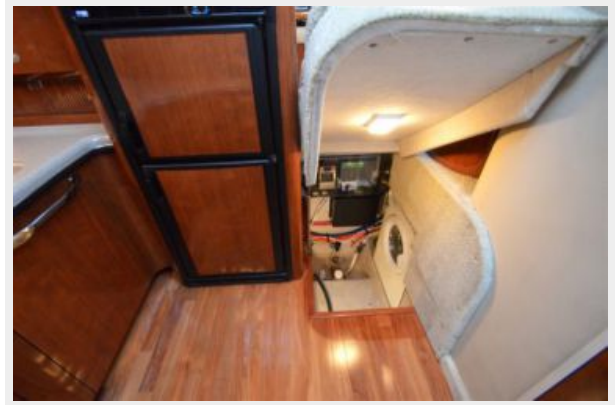
25



26



27



28



29



30



31



33



32



34



35



36



37



38



39



40



41



42



43



44



45



46



47



CONTACTS

Andrey Shestakov, leading yacht broker of the sales department of Shestakov Yacht Sales Inc. Shestakov Yacht Sales Inc., the official representative of the Miami/Fort Lauderdale FL headquarters.

Contact details

Email: andrey@shestakovyachtsales.com

Web: shestakovyachtsales.com/en/

Telephones

USA: +1(954)274-4435

Office hours

Monday – Saturday: **9:00 - 21:00** EDT

Sunday: **closed**

Address



Harbour Towne Marina, 850 NE 3rd St,
STE 213, Dania, FL 33004