

B.S.K. — BENETTI SAIL DIVISION



Builder: BENETTI SAIL DIVISION

Year Built: 1963

Model: SHELBY

Price: PRICE ON APPLICATION

Location: Monaco

LOA: 61' 5" (18.70m)

Beam: 16' 8" (5.06m)

Max Draft: 5' 11" (1.80m)

Cruise Speed: 12 Kts. (14 MPH)

Max Speed: 13 Kts. (15 MPH)

Our experienced yacht broker, Andrey Shestakov, will help you choose and buy a yacht that best suits your needs B.S.K. — BENETTI SAIL DIVISION from our catalogue. Presently, at Shestakov Yacht Sales Inc., we have a wide variety of yachts available on our sale's list. We also work in close contact with all the big yacht manufacturers from all over the world.

If you would like to buy a yacht B.S.K. — BENETTI SAIL DIVISION or would like help answering any questions concerning purchasing, selling or chartering a yacht, please call **+1(954)274-4435**

TABLE OF CONTENTS

TABLE OF CONTENTS	2
SPECIFICATIONS	3
Overview	3
Basic Information	3
Dimensions	3
Speed, Capacities and Weight	3
Accommodations	4
Hull and Deck Information	4
Engine Information	4
PHOTOS	5
CONTACTS	9
Contact details	9
Telephones	9
Office hours	9
Address	9

SPECIFICATIONS

Overview

This vintage yacht which was launched in 1963, has always been meticulously maintained by the Owners. B.S.K. offers a truly unique opportunity to own a rare Benetti Dolphin. From 1963 only 8 yachts were constructed and even the Beatles owned one of them in USA. In 1960 His Highness Prince Rainier III, his wife Princess Grace Kelly and their children spent time on board on the same model.

Basic Information

Category: SHELBY

Sub Category: Classic

Model Year: 1963

Year Built: 1963

Refit Year: 2013

Refit Type: 2019

Country: Monaco

Dimensions

LOA: 61' 5" (18.70m)

Beam: 16' 8" (5.06m)

Max Draft: 5' 11" (1.80m)

Speed, Capacities and Weight

Cruise Speed: 12 Kts. (14 MPH)

Max Speed: 13 Kts. (15 MPH)

Gross Tonnage: 40 Pounds

Water Capacity: 1200 Gallons

Fuel Capacity: 2500 Gallons

Fuel Consumption: 100 Gallons

Accommodations

Total Cabins: 4

Sleeps: 7

Captain Cabin: True

Crew Sleeps: 2

Hull and Deck Information

Hull Material: Steel

Deck Material: Teak

Hull Configuration: Semi-Displacement

Hull Finish: Steel

Exterior Designer: Cantieri Navali Benetti

Interior Designer: Michele Bonan

Engine Information

Engines: 2

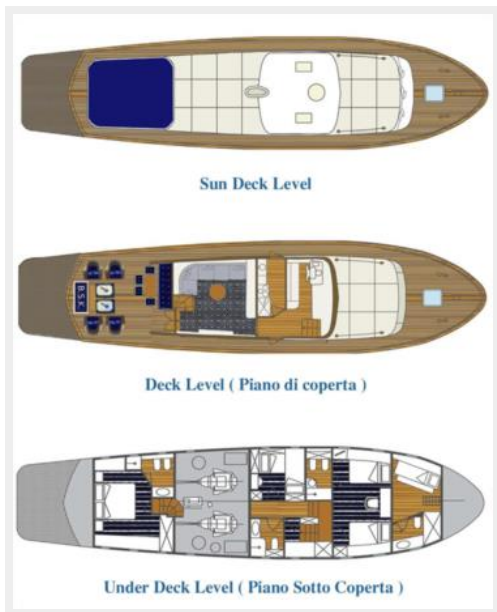
Manufacturer: Volvo Penta

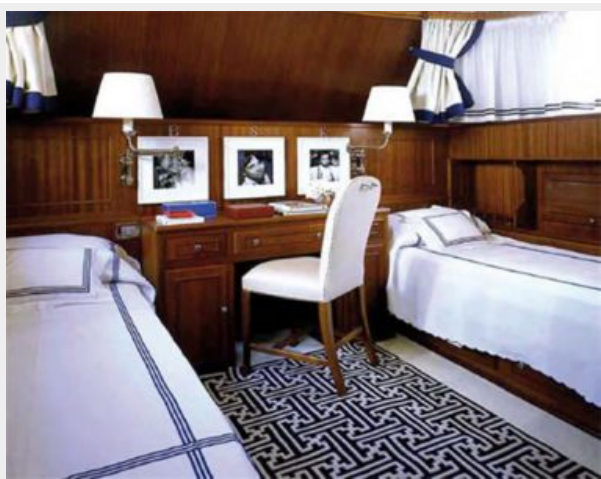
Model: D12 common rail

Engine Type: Inboard

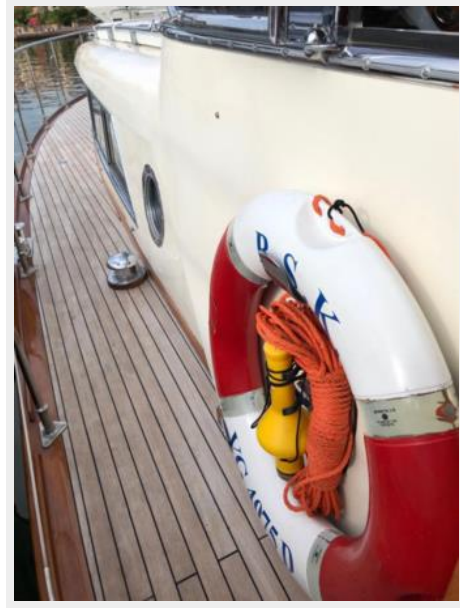
Fuel Type: Diesel

PHOTOS









CONTACTS

Andrey Shestakov, leading yacht broker of the sales department of Shestakov Yacht Sales Inc. Shestakov Yacht Sales Inc., the official representative of the Miami/Fort Lauderdale FL headquarters.

Contact details

Email: andrey@shestakovyachtsales.com

Web: shestakovyachtsales.com/en/

Telephones

USA: +1(954)274-4435

Office hours

Monday – Saturday: **9:00 - 21:00** EDT

Sunday: **closed**

Address



Harbour Towne Marina, 850 NE 3rd St,
STE 213, Dania, FL 33004