

ECLIPSE — HINCKLEY



Builder: HINCKLEY

Year Built: 1985

Model: Classic Yacht

Price: PRICE ON APPLICATION

Location: United States

LOA: 59' 3" (18.06m)

Beam: 15' 6" (4.72m)

Min Draft: 6' 6" (1.98m)

Max Draft: 12' 6" (3.81m)

Cruise Speed: 8 Kts. (9 MPH)

Max Speed: 10 Kts. (12 MPH)

Our experienced yacht broker, Andrey Shestakov, will help you choose and buy a yacht that best suits your needs **ECLIPSE — HINCKLEY** from our catalogue. Presently, at Shestakov Yacht Sales Inc., we have a wide variety of yachts available on our sale's list. We also work in close contact with all the big yacht manufacturers from all over the world.

If you would like to buy a yacht **ECLIPSE — HINCKLEY** or would like help answering any questions concerning purchasing, selling or chartering a yacht, please call **+1(954)274-4435**

TABLE OF CONTENTS

TABLE OF CONTENTS	2
SPECIFICATIONS	3
Overview	3
Basic Information	5
Dimensions	6
Speed, Capacities and Weight	6
Accommodations	6
Hull and Deck Information	6
Engine Information	6
PHOTOS	7
CONTACTS	11
Contact details	11
Telephones	11
Office hours	11
Address	11

SPECIFICATIONS

Overview

Accommodations and Layout

- Sleeps 6 guests, and 2 crew
- Forepeak gear/anchor locker.
- Forward Head - with shower.
- Forward Guest Staterooms - One port and one starboard.
- Port Forward Stateroom - has private Head and shower.
- Main Salon - Includes port side Dinette and starboard Settee.
- Galley - Aft of main salon to port.
- Navigation Station - Aft of main salon to starboard.
- Master Stateroom - Aft cabin with private Head and shower.

Construction, Deck and Hull

- Hand-laid fiberglass hull with Airexcore. Non-integral fiberglass fuel and water tanks. External lead ballast keel. Skeg-mounted rudder. Fiberglass centerboard with bronze leading edge (with wind forward of the beam allows improved pointing into the wind and dramatically decreases leeway). All this equals a true shoaling keel perfect for island exploring and contributes to her stiff and weatherly performance at sea. Fiberglass deck with molded non-skid surface bonded onto 7-1/2" recessed hull flange and thru bolted on 8" centers.
- Flag Blue Awlgrip Topsides with white boot stripe (Painted by Hinckley in 2016, Buffed and Waxed May 2019).
- Red bottom (Painted May 2019-Seahawk Biocop TF Anti-fouling).
- Flat deck surfaces are White gel-coat with tan non-skid area.
- Stainless steel bow and stern pulpits.
- Stainless steel stem fitting and chain plates (All bolts replaced 2015)
- Keel stepped double-spreading aluminum mast (Rewired, inspected and painted-Awlgrip 2009)
- Aluminum boom (Painted-Awlgrip 2009)
- Double stainless steel lifelines on stainless steel stanchions.
- Varnished teak toe-rails, deck trim, dorade boxes and lazarette hatches (Stripped and varnished annually).

- Stainless dorades and dorade guards.
- 16-Opening Ports and Hatches
- 4-Cabin Windows (Replaced 2017 with 3/8 inch Lexan)
- Edson stainless steel bracketed davit system- 250 lb weight rating with positive locking Spinlockcam™ cam cleats.
- 3 Blade bronze max propeller

Navigation and Electronics

- Raymarine E-120W Radar/ GPS Chartplotter (2016 with 2GB Central and South America Chart Chip)
- Simrad AP26 Autopilot.
- Simrad 12-Volt Auto-pilot with ER20 Remote Control.
- ICOM IC M170 Single Sideband Radio.
- Uniden UM525 VHF radio at Nav-station.
- Uniden remote VHF at Helm-station.
- Raytheon ST60 PLUS- Knot, Wind and Depth instruments- Double readout at nav-station and helm.
- Sony S-Drive AM/FM/CD/ USB Connect- Speaker controlled in salon, aft cabin and cockpit

Sail Inventory and Rigging

- (2) Mainsails- North sails (2014).
- (1) 130% roller-furling genoa.
- (1)140% roller-furling genoa.
- (1) 155% genoa- North sails 3DL.
- (1) 100% genoa.
- Storm Jib.
- Trysail.
- Staysail.
- Spinnaker.
- Standing rigging- Stainless steel rod, 1x19 wire with bronze/ stainless steel turnbuckles and fittings.
- Running rigging replaced fully in 2006, then replaced as needed (New spin Halyard 2014).
- Navtec hydraulic back stay tensioner and boom-vang (Rebuilt 2007).
- Harken roller furling headstay (Rebuilt 2007).
- Whisker pole- Aluminum.
- Spinnaker pole- Carbon Fiber.

- Barient Winches- (1) 48- Electric Center Out-haul, (2) 28-Secondaries, (4) 36-Primaries, (3) 27- Halyard Mast Mounted.

Mechanical

- Side-power 10-inch Bow-thruster with control on helm
- Northern Lights 12-KW diesel powered generator (2116 Hours)
- Marine Air 16,000 BTU Reverse Cycle Air-Conditioning and Heater (Plumbing,120- volt pumps and sea-strainers 2007)
- Isotherm Hot water heater (2012)
- Racor fuel filter system hoses for engine and generator
- Vacuum Gage on fuel filters (2015)
- 3 Aluminum LPG tanks (Spare for grill) on a 12-Volt switch
- 12-Volt Saltwater deck wash down
- 12-Volt Freshwater deck wash down
- 2 forward toilets on own system
- 1 toilet aft on separate (All toilets rebuilt in 2007, new hoses 2012)
- Foil-lined sound insulation in engine and generator rooms
- Lifeline Marine AGM Batteries: 7-37 House, 1-40 Bow Thruster, 1-37 Generator, 2 Main Engine Room

Additional Equipment

- 10ft North Atlantic Inflatable RIB Dinghy (Aluminum Bottom)
- 2018 Yamaha 10HP 4-Stroke Outboard Motor

Basic Information

Category: Classic Yacht

Model Year: 1985

Year Built: 1985

Refit Year: 2006

Refit Type: Full

Country: United States

Dimensions

LOA: 59' 3" (18.06m)

Beam: 15' 6" (4.72m)

Min Draft: 6' 6" (1.98m)

Max Draft: 12' 6" (3.81m)

Clearance: 74' 0" (22.56m)

Speed, Capacities and Weight

Cruise Speed: 8 Kts. (9 MPH)

Max Speed: 10 Kts. (12 MPH)

Displacement: 66000 Pounds

Water Capacity: 400 Gallons

Fuel Capacity: 300 Gallons

Accommodations

Total Cabins: 3

Hull and Deck Information

Hull Material: Fiberglass

Deck Material: Nonskid painted

Hull Configuration: Centerboard

Hull Color: Flag Blue

Hull Finish: Stainless Steel

Hull Designer: McCurdy & Rhodes

Engine Information

Engines: 1

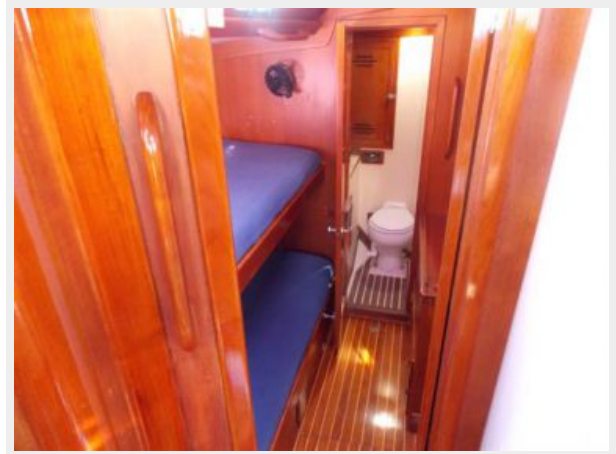
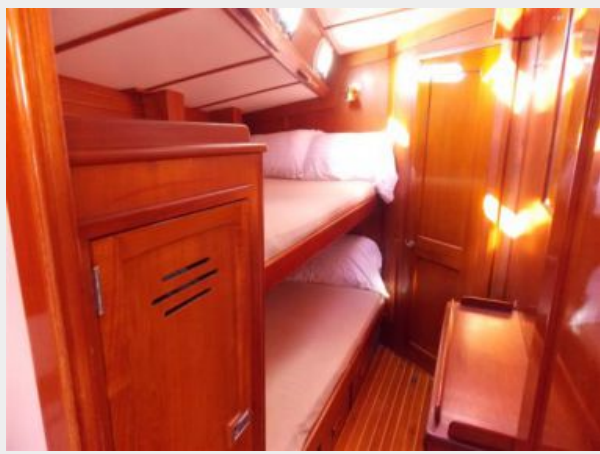
Manufacturer: Yanmar

Model: 4LHA-HTP

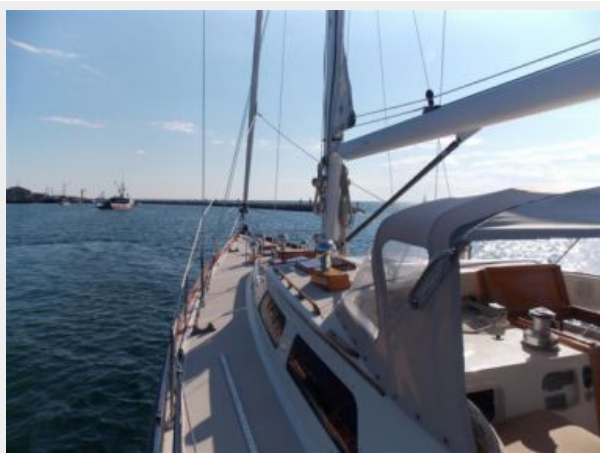
Fuel Type: Diesel

PHOTOS









CONTACTS

Andrey Shestakov, leading yacht broker of the sales department of Shestakov Yacht Sales Inc. Shestakov Yacht Sales Inc., the official representative of the Miami/Fort Lauderdale FL headquarters.

Contact details

Email: andrey@shestakovyachtsales.com

Web: shestakovyachtsales.com/en/

Telephones

USA: +1(954)274-4435

Office hours

Monday – Saturday: **9:00 - 21:00** EDT

Sunday: **closed**

Address



Harbour Towne Marina, 850 NE 3rd St,
STE 213, Dania, FL 33004