

ASH — WALLY YACHTS



Builder: WALLY YACHTS

Year Built: 2006

Model: Motor Yacht

Price: PRICE ON APPLICATION

Location: France

LOA: 72' 3" (22mm)

Beam: 17.71

Min Draft: 4' (1.2mm)

Max Draft: 4' (1.2mm)

Cruise Speed: 33 Knots Kts. (38 MPH)

Max Speed: 37 Knots Kts. (43 MPH)

Our experienced yacht broker, Andrey Shestakov, will help you choose and buy a yacht that best suits your needs **ASH — WALLY YACHTS** from our catalogue. Presently, at Shestakov Yacht Sales Inc., we have a wide variety of yachts available on our sale's list. We also work in close contact with all the big yacht manufacturers from all over the world.

If you would like to buy a yacht **ASH — WALLY YACHTS** or would like help answering any questions concerning purchasing, selling or chartering a yacht, please call **+1(954)274-4435**

TABLE OF CONTENTS

TABLE OF CONTENTS	2
SPECIFICATIONS	3
Overview	3
Basic Information	3
Dimensions	3
Speed, Capacities and Weight	4
Accommodations	4
Hull and Deck Information	4
Engine Information	4
PHOTOS	5
4	5
7	6
5	6
12	6
13	6
16	6
14	6
8	7
11	7
1	7
2	7
CONTACTS	8
Contact details	8
Telephones	8
Office hours	8
Address	8

SPECIFICATIONS

Overview

ASH is a beautiful, sleek, performance power yacht with a cruising speed of 33 knots and a maximum speed of 37knots, making her ideal for exploring the Mediterranean coast line.

A comfortable sunbathing area fore, a sumptuous lounge inside and a generous social and dining area aft lend themselves perfectly to entertaining and ASH can welcome up to 12 guests for day charters or up to 4 guests in 2 well appointed cabins for longer periods.

KEY INFORMATION:

- Price reduced to 2,1M€, VAT paid.
- Very well maintained.
- Charter License.
- Large Master Cabin.
- Amazing exterior spaces.
- Top Speed 37knots.
- Interior and exterior refit in 2016 by Loro Piana.
- New paint and teack deck in 2019
- Unique design of the Wally 70' turning heads
- Berth in ST TROPEZ
- The coolest and nicest day boat available in today's market!

Basic Information

Category: Motor Yacht

Model Year: 2006

Year Built: 2006

Country: France

Dimensions

LOA: 72' 3" (22mm)

Beam: 17.71

Min Draft: 4' (1.2mm)

Max Draft: 4' (1.2mm)

Speed, Capacities and Weight

Cruise Speed: 33 Knots Kts. (38 MPH)

Max Speed: 37 Knots Kts. (43 MPH)

Fuel Consumption: 132.09 Gal Gallons

Accommodations

Total Cabins: 2

Sleeps: 4

Total Heads: 4

Crew Berths: 2

Hull and Deck Information

Hull Material: Fiberglass

Hull Configuration: Planing

Hull Designer: Wally Yachts

Engine Information

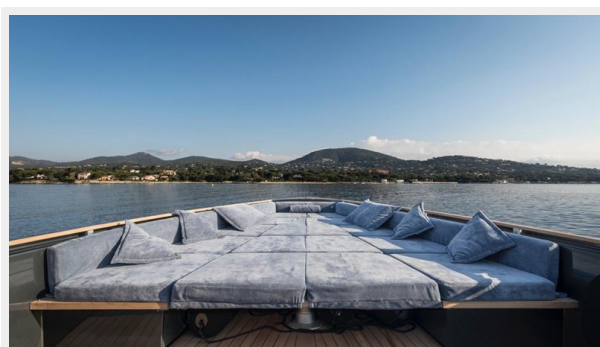
Engines: 2

Manufacturer: MTU

PHOTOS



4



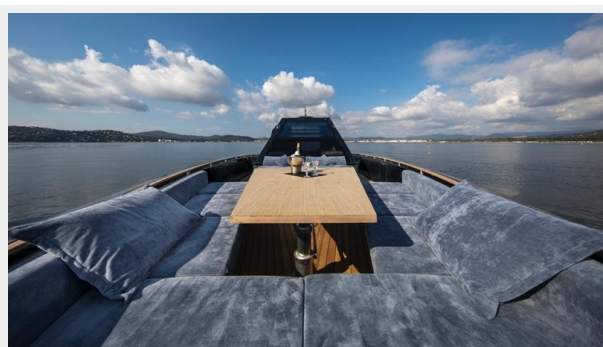
5



7



13



12



16



14



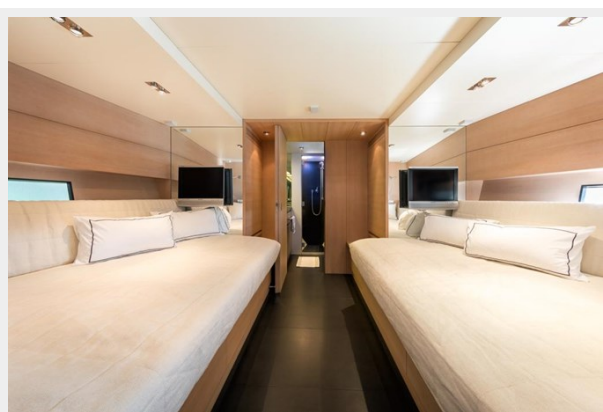
8



11



1



2



CONTACTS

Andrey Shestakov, leading yacht broker of the sales department of Shestakov Yacht Sales Inc. Shestakov Yacht Sales Inc., the official representative of the Miami/Fort Lauderdale FL headquarters.

Contact details

Email:
andrey@shestakovyachtsales.com

Web: shestakovyachtsales.com/en/

Telephones

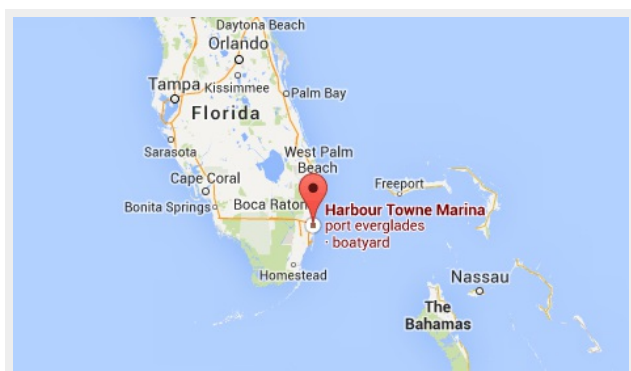
USA: **+1(954)274-4435**

Office hours

Monday – Saturday: **9:00 - 21:00 EDT**

Sunday: **closed**

Address



Harbour Towne Marina, 850 NE 3rd St,
STE 213, Dania, FL 33004