

DELTA 88 CARBON — DELTA POWERBOATS



Builder: DELTA POWERBOATS

Year Built: 2019

Model: Motor Yacht

Price: PRICE ON APPLICATION

Location: United States

LOA: 86' 0" (26.21m)

Beam: 21' 7" (6.58m)

Max Draft: 5' 6" (1.68m)

Cruise Speed: 32.5 Kts. (37 MPH)

Max Speed: 38 Kts. (44 MPH)

Our experienced yacht broker, Andrey Shestakov, will help you choose and buy a yacht that best suits your needs **Delta 88 Carbon — DELTA POWERBOATS** from our catalogue. Presently, at Shestakov Yacht Sales Inc., we have a wide variety of yachts available on our sale's list. We also work in close contact with all the big yacht manufacturers from all over the world.

If you would like to buy a yacht **Delta 88 Carbon — DELTA POWERBOATS** or would like help answering any questions concerning purchasing, selling or chartering a yacht, please call **+1(954)274-4435**

TABLE OF CONTENTS

TABLE OF CONTENTS	2
SPECIFICATIONS	3
Overview	3
Basic Information	3
Dimensions	3
Speed, Capacities and Weight	4
Accommodations	4
Hull and Deck Information	4
Engine Information	4
DETAILED INFORMATION	5
Overview	5
Optimized Layout	5
Standard Equipment	5
Salon	6
Owner's Stateroom	6
Construction	7
Exclusions	7
Disclaimer	7
PHOTOS	8
CONTACTS	11
Contact details	11
Telephones	11
Office hours	11
Address	11

SPECIFICATIONS

Overview

2020 DELTA 88 CARBON

The 88 Carbon's distinctly Scandinavian interior features incredible visibility and volume on a performance motor yacht. Designed for owner/operators or for a small crew, the accommodations include a four (4) spacious staterooms and crew quarters. Triple Volvo IPS 1200's power the 88 to an impressive 36-knot top speed. The IPS system includes joystick control which allows for superior maneuverability and effortless owner/operator handling. And last but not least, the exterior decks including the large, versatile cockpit are perfectly suited for the Active Lifestyle, from fishing and diving to swimming and sunbathing.

***Trade-ins considered, seller financing options available. Some conditions do apply.**

Basic Information

Category: Motor Yacht

Model Year: 2020

Year Built: 2019

Country: United States

Fly Bridge: Yes

Dimensions

LOA: 86' 0" (26.21m)

Beam: 21' 7" (6.58m)

Max Draft: 5' 6" (1.68m)

Clearance: 25' 3" (7.70m)

Speed, Capacities and Weight

Cruise Speed: 32.5 Kts. (37 MPH)

Max Speed: 38 Kts. (44 MPH)

Displacement: 92594 Pounds

Water Capacity: 317 Gallons

Fuel Capacity: 1585 Gallons

Accommodations

Total Cabins: 4

Sleeps: 8

Total Heads: 4

Hull and Deck Information

Hull Material: Other

Hull Configuration: Deep Vee

Hull Designer: Lars Modin

Exterior Designer: Lars Modin

Engine Information

Engines: 3

Manufacturer: Volvo Penta

Model: IPS 1200

Engine Type: Inboard

Fuel Type: Diesel

DETAILED INFORMATION

Overview

Inside and out, the Delta 88 Carbon takes you and your guests on an extraordinary journey. She is stronger, stiffer and lighter as well, which allows the 88 Carbon to utilize smaller engines and drives, yet remain faster at cruise and top speeds than aluminum, steel or fiberglass vessels. Without compromise, the 88 Carbon's design optimization yields impressive fuel economy at all speeds.

Optimized Layout

Each deck on the 88 Carbon is purposefully designed for the best possible experience at sea, under power, at berth, or wherever her owner and guests will find adventure. She features every comfort and convenience imaginable. One such is a dedicated passerelle and innovative transformer astern that includes a secondary passerelle, a power tender launch and retrieval, and a "stairway to the sea"... all at the touch of a button! The 88 Carbon's optimized hull form with semi-recessed pods lends itself to supreme speed and efficiency with minimal power, noise, and vibration. Even the windlass mechanism has been carefully executed, providing protection to the axe bow by launching the anchor away from the prow and tucking neatly away when fully retrieved and ready for running.

Standard Equipment

- Hand-selected teak floors and cabinetry
- Premium Corian countertops
- Hand-laid, vacuum-applied teak decks
- Powered passerelle and transformer device astern
- Oceanair shades throughout
- 6 Independent zones of Bluetooth audio
- 6 Independent A/V zones with TV + DVD + Apple TV
- Premium Siemens appliances
- Sunbrella covered cushions, interior + exterior
- Low-heat LED lighting throughout

- Raymarine glass dash equipment at main helm and flybridge with three screens each
- Webasto retracting sunroof
- Mastervolt CANbus system with touchscreen
- World power configuration with 50/60 HZ and 110/220 V conversion
- Dual genset
- Working air systems
- Bauer scuba compressor/hookah

Salon

The main deck salon aboard the Delta 88 Carbon is an exercise in quiet elegance.

Hand-selected tropical woods and soft Italian fabrics adorn all surfaces, inviting guests to experience sanctuary and relaxation. Ample natural light floods the main deck during the day, and the meticulous lighting design ensures a "just right" ambience in the evening.

Owner's Stateroom

The full-beam owner's stateroom aboard the Delta 88 Carbon comes replete with all of the comforts of home and more.

- Wine storage/chilling, en suite
- TV with power lift
- Audio/video, integrated
- Yacht management with touchscreen
- Vanity and settee
- Walk-in closet
- Master bath, en suite
- Towel racks, heated
- His and hers sinks

Construction

- Carbon fiber, deep-V hull with speed rails
- Hull structure, bulkheads, deck bulkheads, roof, deck hatches, flybridge, and engine room in vacuum-infused Diab carbon fiber/vinylester/divinycell material
- Hull in white gelcoat
- Waterlines in black gelcoat
- Plumbing pipes in stainless steel and PVC
- Calculations and weight optimization by Diab

Exclusions

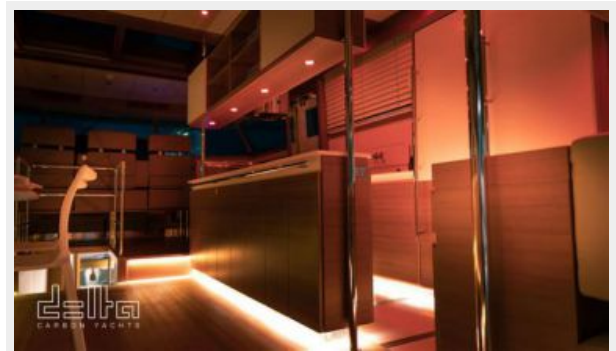
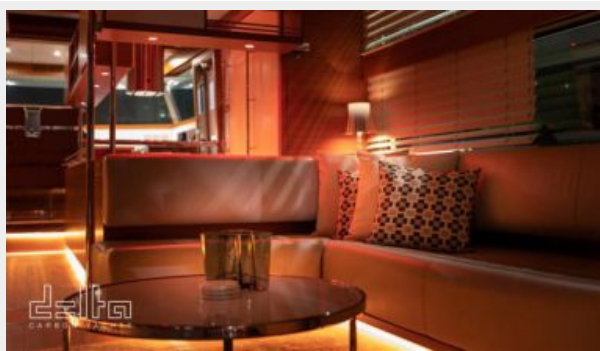
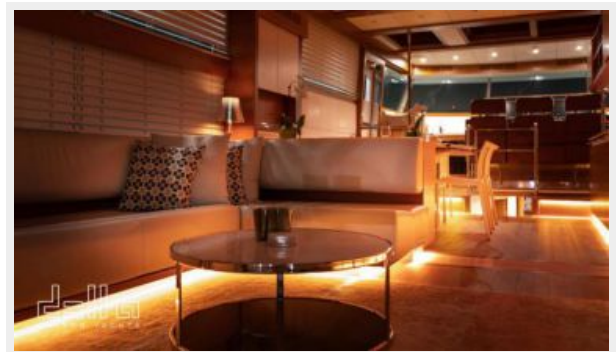
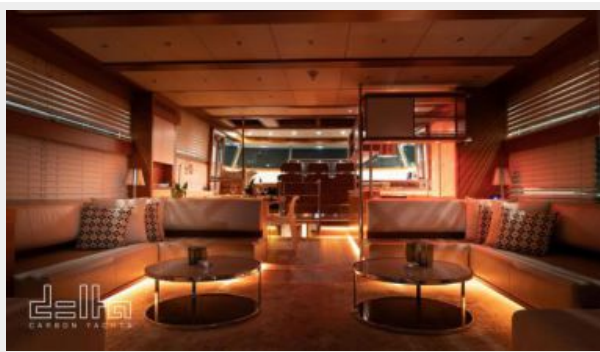
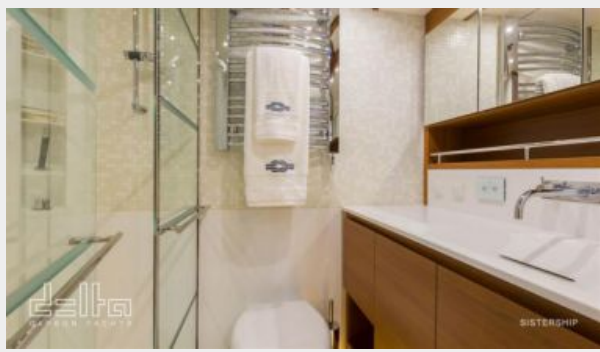
Owner's personal belongings.

Disclaimer

The Company offers the details of this vessel or yacht in good faith but cannot guarantee or warrant the accuracy of this information nor warrant the condition of the vessel. A buyer should instruct his representatives, agents, or his surveyors, to investigate such details as the buyer desires validated. This vessel or yacht is offered subject to prior sale, price change, or withdrawal without notice.

PHOTOS







CONTACTS

Andrey Shestakov, leading yacht broker of the sales department of Shestakov Yacht Sales Inc. Shestakov Yacht Sales Inc., the official representative of the Miami/Fort Lauderdale FL headquarters.

Contact details

Email: andrey@shestakovyachtsales.com

Web: shestakovyachtsales.com/en/

Telephones

USA: +1(954)274-4435

Office hours

Monday – Saturday: **9:00 - 21:00** EDT

Sunday: **closed**

Address



Harbour Towne Marina, 850 NE 3rd St,
STE 213, Dania, FL 33004