

SAMURAI — AZIMUT



Builder: [AZIMUT](#)

Year Built: 2015

Model: Motor Yacht

Price: PRICE ON APPLICATION

Location: United States

LOA: 77' 0" (23.47m)

Beam: 18' 3" (5.56m)

Max Draft: 5' 5" (1.65m)

Cruise Speed: 27 Kts. (31 MPH)

Max Speed: 32 Kts. (37 MPH)

Our experienced yacht broker, Andrey Shestakov, will help you choose and buy a yacht that best suits your needs **Samurai — AZIMUT** from our catalogue. Presently, at Shestakov Yacht Sales Inc., we have a wide variety of yachts available on our sale's list. We also work in close contact with all the big yacht manufacturers from all over the world.

If you would like to buy a yacht **Samurai — AZIMUT** or would like help answering any questions concerning purchasing, selling or chartering a yacht, please call **+1(954)274-4435**

TABLE OF CONTENTS

TABLE OF CONTENTS	2
SPECIFICATIONS	3
Overview	3
Basic Information	3
Dimensions	3
Speed, Capacities and Weight	3
Accommodations	3
Hull and Deck Information	4
Engine Information	4
DETAILED INFORMATION	5
Overview	5
Exclusions	13
Disclaimer	13
PHOTOS	14
CONTACTS	19
Contact details	19
Telephones	19
Office hours	19
Address	19

SPECIFICATIONS

Overview

2015 Azimut 77S Motor Yacht For sale by her original owner, this stunning 2015 Azimut 77S Flybridge shows beautifully from stem to stern. She is a highly optioned yacht with a long list of custom interior finishes. Triple Volvo IPS 1200's with very low hours power this Azimut 77S to an impressive 32 knots at full throttle, while remaining remarkably quiet underway. Professionally maintained with an open checkbook and easy to preview in Aventura, FL.

Basic Information

Category: Motor Yacht

Sub Category: Flybridge

Model Year: 2015

Year Built: 2015

Country: United States

Fly Bridge: Yes

Dimensions

LOA: 77' 0" (23.47m)

Beam: 18' 3" (5.56m)

Max Draft: 5' 5" (1.65m)

Speed, Capacities and Weight

Cruise Speed: 27 Kts. (31 MPH)

Max Speed: 32 Kts. (37 MPH)

Displacement: 116500 Pounds

Water Capacity: 290 Gallons

Fuel Capacity: 1056 Gallons

Accommodations

Total Cabins: 4

Total Heads: 4

Hull and Deck Information

Hull Material: Fiberglass

Engine Information

Engines: 3

DETAILED INFORMATION

Overview

At a Glance

Stability:

M/Y Samurai handles rough sea conditions with agility and stability. Two Seakeeper gyro stabilizers strategically placed in separate sections makes for stable cruising and anchoring, as witnessed in the tranquil Exumas and in choppy seas.

Easy handling:

Powered by triple Volvo Penta 1200's with pod drives and low hours, M/Y Samurai makes operators look like seasoned boaters with its easy maneuvering / docking. The yacht's high speed turn option enables it to perform sharp turns both quickly and aggressively.

Long range cruising:

M/Y Samurai has the requisite range, speed and storage capabilities for long term excursions in the Bahamas. She's hosted many memorable trips to the islands and stories abound of off-the-grid scuba diving, snorkeling, island hopping and family picnics overlooking crystal clear Bahamian waters.

Notable Options Included

Mechanical/Electrical:

- Seakeeper stabilizers
- Bow thruster
- Kohler 32kW generators (2)
- Underwater lights (2)

Hull & deck:

- Painted hull
- Hi-gloss coffee table at bow seating area
- Williams 285 Turbojet tender
- Zodiac 6-person liferafts (2) mounted on custom stainless Easy Release

Flybridge:

- Custom radar mast, carbon fiber

- Co-pilot seat
- Refrigerator

Cockpit:

- Electric awning
- Hi-gloss table with chairs
- BBQ
- Refrigerator
- Ice maker

Interior:

- Custom interior fabrics / leather
- Custom A/V system, full details on request
- Wood flooring throughout salon, dining & helm areas

Wheelhouse:

- Raymarine Platinum package
- Bar with refrigerator & ice maker
- Dual Treben leather helm chairs

Galley:

Miele appliances

- Wine chiller in galley
- Washer and dryer in crew quarters

Salon and Dinette Notables

- L-shaped sofa to starboard, sofa to port
- Coffee table
- Dinette with L-shaped sofa and chairs
- Panoramic ceiling window, electro-hydraulically operated

- LED lighting

Wheelhouse Notables

- Pantograph side door
- Volvo instrumentation display
- Raymarine Platinum package:
 - Raymarine GS165 Displays (2)
- Joystick, Volvo Penta

Galley Notables

- Silestone countertop
- Double basin sink, stainless steel
- Miele 4-burner glass ceramic range
- Extraction hood with active carbon filter
- Refrigerator with freezer
- Dishwasher
- Microwave oven and grill

Owner's Stateroom Notables

- Double berth with storage underneath
- Furniture in glossy Zebrano wood
- Nightstand
- Vanity lounge to starboard
- Mirror TV system
- LED lighting

Owner's Bathroom Notables

- Smoked glass wash basin
- Wash basin top in glass

- Shower with glass door and non-skid floor
- LED wall and spot lighting

VIP Stateroom Notables

- Double berth with storage underneath
- Foldaway vanity table to port
- LED lighting
- Panoramic windows on both sides
- TV system
- Escape hatch

VIP Head Notables

- Smoked glass wash basin
- Wash basin with glass top & storage
- Shower with glass door and non-skid floor
- LED wall lighting

Port Guest Stateroom Notables

- Two single berths with underneath storage
- Wardrobe with mirror
- Nightstands
- LED lighting
- Fixed panoramic window
- TV system

Starboard Guest Stateroom Notables

- Two single berths with storage underneath
- Nightstand between beds

- LED lighting
- Fixed panoramic window
- TV system

Port and Starboard Guest Bathrooms Notables

- Smoked glass wash basin
- Wash basin with glass top & storage
- Shower with glass door and non-skid floor
- Matt lacquered white access door interior
- LED wall lighting

Crew Quarters Notables

- Semi-automatic pantograph access door
- Captain's cabin:
 - Single berth with mattress & pillows
 - Wardrobe
- Crew cabin:
 - Twin bunks and single berth with mattresses & pillows
 - Storage under bottom bunk
 - Wardrobe
- Washer & dryer in corridor
- Access to engine room via watertight door

Crew Head Notables

- Wash basin with storage
- Shower enclosure

Sundeck Notables

- Access from cockpit via a steel stairway
- Sunbed cushion with protective cover
- Navigation equipment:
 - Volvo Penta maneuvering joystick
 - Horn / navigation light controls
 - Compass
 - Naviop

Hull and Deck Notables

Bow:

- Delta 50kg anchor
- Stainless steel anchor holder
- Double chain locker
- Bow sunbed cushions with covers
- Bow dinette cushions with covers

Decks:

- Side disembarking doors
- Extra thick tempered glass side windows
- Watertight side door leading down to crew cabin to port
- Watertight side door for access to wheelhouse area to starboard

Equipment:

- Anchor lines
- Safety system for anchor
- Fenders with covers
- Fender lines

Cockpit and Swim Platform Notables

Cockpit:

- Sofa with backrest, cushions and covers
- LED lighting with dimmer
- Watertight loudspeakers, ceiling mounted
- Engine room access door

Swim Platform:

- Teak decking
- Fold-away electro-hydraulic gangway to starboard
- Swim ladder to starboard
- Garage:
 - Williams 285 Turbojet tender
 - Sea Doo Spark
 - Tender and jet ski with haul & launching system
 - Pivoting garage door which converts into a swim platform and operated by an electrohydraulic mechanism with rotary actuators

Electrical Notables

- Kohler 32Kw generators (2):
 - Gen 1: 464 hours as of May 2019
 - Gen 2: 403 hours as of May 2019
- Main electric panel located in engine room
- Dimmers for light switches in saloon and cabins
- Shore power sockets (2), 50A
- Batteries:
 - Service: 10 AGM 90Ah 24V batteries with charger
 - Engines: 6 AGM 90Ah 24V batteries with charger
 - Generator: 1 90Ah 12V battery with charger

Engine and Mechanical Notables

- Seafire Fire Extinguishing System
- 4000L fiberglass fuel tank
- Electronic diesel level indicators (2)
- Mechanical diesel level gauge
- Double diesel filters for main engines
- Remote diesel shut-off (engine and generator) via 24V solenoid valve
- Fresh Water System:
 - 1100L stainless steel tank
 - 1 water heater, 100L
- Black Water System:
 - 430L polyethylene tank
 - Level sensor
 - Bulwark discharge with anti-odor filter
- Gray Water System:
 - Discharge of owner's head and crew head water into central collection tank (fiberglass, 200L capacity)
 - Bow water drainage (VIP head, 2 guest heads and galley) into fore collection tank (polyethylene, 175L capacity)
- Automatic/ manual tank discharge
- Air Conditioning:
 - Condaria water-based system
 - Distribution:
 - Saloon and Dinette 3 x 12500 BTU
 - Wheelhouse and windscreen: 2 x 12500 BTU
 - Owner's cabin and bathroom: 2 x 9,200 BTU

- Galley: 1 x 9200 BTU
- VIP cabin and bathroom: 1 x 12500 BTU
- Port side guest cabin and bathroom: 1 x 9200 BTU
- Starboard side guest cabin and bathroom: 1 x 9200 BTU
- Crew room: 2 x 6200 BTU

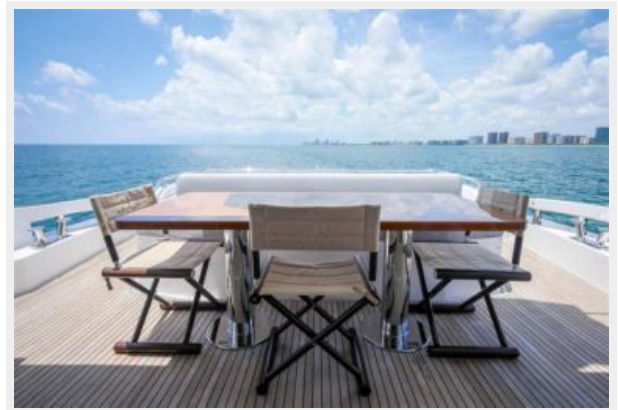
Exclusions

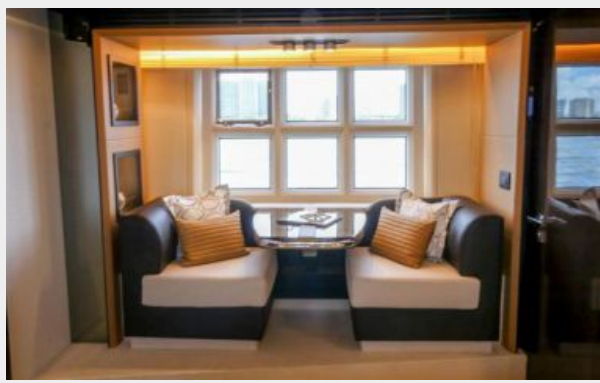
Owner's personal belongings.

Disclaimer

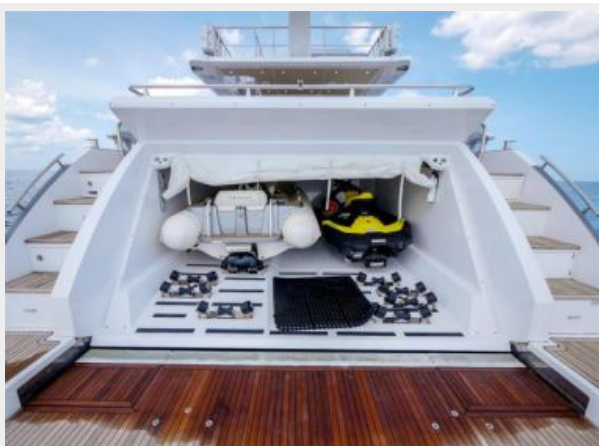
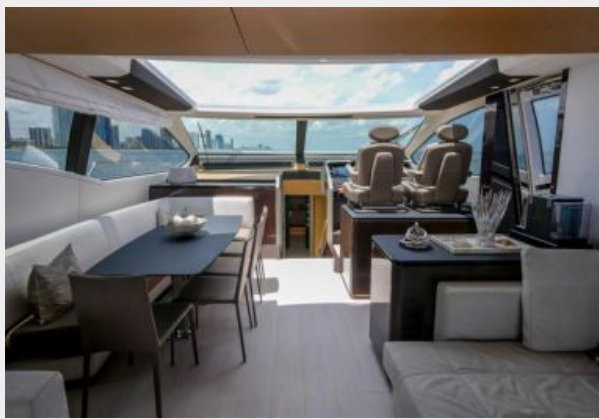
The Company offers the details of this vessel or yacht in good faith but cannot guarantee or warrant the accuracy of this information nor warrant the condition of the vessel. A buyer should instruct his representatives, agents, or his surveyors, to investigate such details as the buyer desires validated. This vessel or yacht is offered subject to prior sale, price change, or withdrawal without notice.

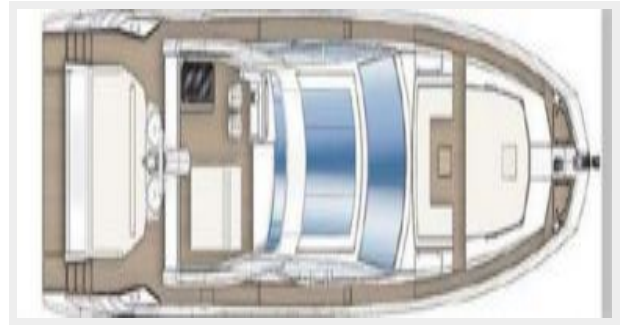
PHOTOS











CONTACTS

Andrey Shestakov, leading yacht broker of the sales department of Shestakov Yacht Sales Inc. Shestakov Yacht Sales Inc., the official representative of the Miami/Fort Lauderdale FL headquarters.

Contact details

Email: andrey@shestakovyachtsales.com

Web: shestakovyachtsales.com/en/

Telephones

USA: +1(954)274-4435

Office hours

Monday – Saturday: **9:00 - 21:00** EDT

Sunday: **closed**

Address



Harbour Towne Marina, 850 NE 3rd St,
STE 213, Dania, FL 33004