

DELTA 33 OPEN — DELTA POWERBOATS



Builder: DELTA POWERBOATS

Year Built: 2021

Model: Cruising Yacht

Price: PRICE ON APPLICATION

Location: United States

LOA: 35' 0" (10.67m)

Beam: 10' 3" (3.12m)

Max Draft: 3' 1" (0.94m)

Cruise Speed: 30 Kts. (35 MPH)

Max Speed: 43 Kts. (49 MPH)

Our experienced yacht broker, Andrey Shestakov, will help you choose and buy a yacht that best suits your needs **Delta 33 Open — DELTA POWERBOATS** from our catalogue. Presently, at Shestakov Yacht Sales Inc., we have a wide variety of yachts available on our sale's list. We also work in close contact with all the big yacht manufacturers from all over the world.

If you would like to buy a yacht **Delta 33 Open — DELTA POWERBOATS** or would like help answering any questions concerning purchasing, selling or chartering a yacht, please call **+1(954)274-4435**

TABLE OF CONTENTS

TABLE OF CONTENTS	2
SPECIFICATIONS	3
Overview	3
Basic Information	3
Dimensions	3
Speed, Capacities and Weight	3
Accommodations	4
Hull and Deck Information	4
Engine Information	4
DETAILED INFORMATION	5
Overview	5
Exclusions	7
Disclaimer	7
PHOTOS	8
CONTACTS	11
Contact details	11
Telephones	11
Office hours	11
Address	11

SPECIFICATIONS

Overview

DELTA 33 OPEN The Delta 33 Open is a Scandinavian-built carbon fiber daycruiser with open walkaround decks perfectly suited for entertaining, swimming and sunbathing. An elevated foredeck area allows for a cabin and head below deck, and a complete galley and convertible dining area on the main deck. Distinctly Scandinavian touches are found throughout, including the convertible settee on the aft deck that transforms into a spacious lounging area.

*Construction financing available! **Price excludes U.S. shipping and duties.

Basic Information

Category: Cruising Yacht

Sub Category: Open Yacht

Model Year: 2022

Year Built: 2021

Country: United States

Dimensions

LOA: 35' 0" (10.67m)

Beam: 10' 3" (3.12m)

Max Draft: 3' 1" (0.94m)

Speed, Capacities and Weight

Cruise Speed: 30 Kts. (35 MPH)

Max Speed: 43 Kts. (49 MPH)

Water Capacity: 39 Gallons

Holding Tank: 15 Gallons

Fuel Capacity: 145 Gallons

Accommodations

Total Cabins: 2

Sleeps: 4

Total Heads: 1

Hull and Deck Information

Hull Material: Other

Hull Designer: Ted Mannerfelt

Engine Information

Engines: 1

DETAILED INFORMATION

Overview

Construction The Delta 33 Open features a composite hull and carbon fiber superstructure. Carbon fiber is an extremely strong and lightweight material that not only makes the yacht lighter and faster, but also reduces fuel consumption by 30% in comparison to similarly sized vessels.

- Hull: Twin-stepped ventilated deep-V
- Hull structure: Vacuum-infused Diab core composite of glass | vinylester | divinycell
- Superstructure: Vacuum-infused Diab core composite of glass | vinylester | divinycell
- Hull in white gelcoat

Deck Equipment Highlights

- Oversized anchor + fender locker at bow
- 12V windlass with bow foot switches, remote control, and fixed controls at helm
- SS custom fabricated cleats
- Flush mount skylight for VIP cabin
- Teak deck, hand laid vacuum applied
- Aft deck Hi/Lo table converts to sunpad with cushion

Mechanical Highlights

- Webasto air conditioning, 9,000 BTU
- Water heater with tank, 25 L
- Fresh water system with Jabsco 12V pressure pump
- Exterior shower at swim platform
- Underwater LED lights (2)

A/V Highlights

- Stereo with Bluetooth
- Waterproof exterior speakers, Bose
- Sonos
- Airport

Engine Room Highlights

- Volvo Penta D6 400 OR 2x Volvo Penta D3 220
- Hydraulic steering by Volvo Penta
- Twin pre-filters with crossover [can be "hot-swapped" underway]
- Automatic fire system
- Bilge pump, automatic with alarm and sensor
- Manual bilge pump
- Seawater strainer

Electrical Highlights

- Fischer Panda 8kW genset
- 12V electrical by MasterVolt
- MasterVolt AGM batteries (main engine, genset, service/house)
- 50amp shorepower cable
- MasterVolt charger for service/house batteries, 50amp
- MasterVolt charger engine/genset batteries, 25amp
- Transformer 110-220/220-110 frequency converter for use both in the Med and the U.S. 50/60hz

Helm Station Highlights

- Captain's seat with stand up + sit down functions
- Aft sofa, foldable for back-to-back seating or sunpad use
- Volvo Penta steering wheel system
- Volvo Penta gear/throttle selector
- Volvo Penta 4" multi-display
- Volvo Penta engine data interface - Raymarine system
- Raymarine 12" touchscreen multi-monitors (3)
- Raymarine depth sounder module
- Raymarine VHF with loudspeaker
- Lenco trim tab system with lighted trim indicators

Galley Highlights

- White Corian countertop
- Siemens 2-zone cooktop
- Corian custom fabricated double sinks
- Designer faucet by Vola
- Isotherm refrigerator with integrated freezer

Owner's Cabin Highlights

- Interior in select grade teak, varnished in 6 layers
- Roof panels in Italian soft fabric, off-white
- Oiled teak floors.
- Plush mattress with Sunbrella interior cover
- Bose satellite speakers (2)
- Air conditioning diffuser
- Webasto air conditioning controller
- Side windows (2)
- OceanAir manual blinds (2) for windows

Owner's Cabin Head

- Interior in select grade teak, varnished in 6 layers
- Roof panels in Italian soft fabric, off-white
- Oiled teak floors
- Corian on shower floor
- Jabsco marine toilet with macerator
- Custom fabricated bathroom countertop in Corian
- Philippe Starck-designed china sink
- Designer faucet by Vola
- Designer shower head by Vola
- Handheld shower by Vola
- Wall mounted mirror with light
- Side window
- Custom fabricated glass wall/door for shower

Aft Guest Cabin Highlights

- Interior in select grade teak, varnished in 6 layers
- Roof panels in Italian soft fabric, off-white
- Oiled teak floors
- Plush mattress with Sunbrella interior cover
- Air conditioning diffuser
- Side window, round

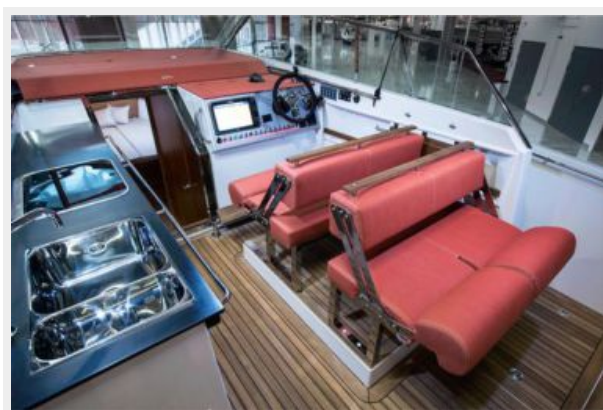
Exclusions

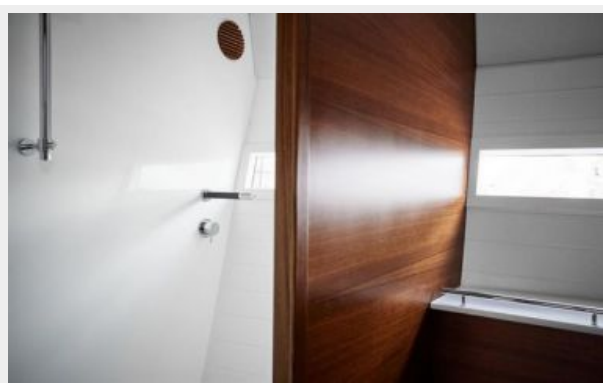
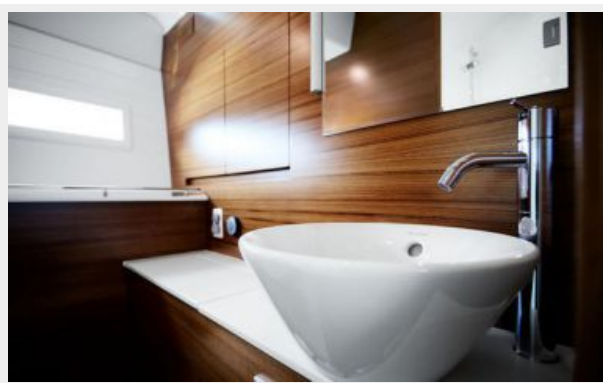
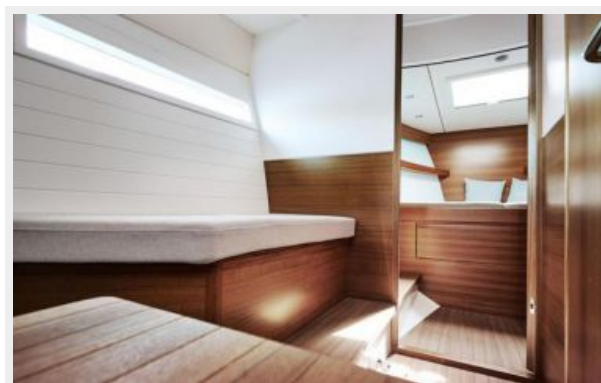
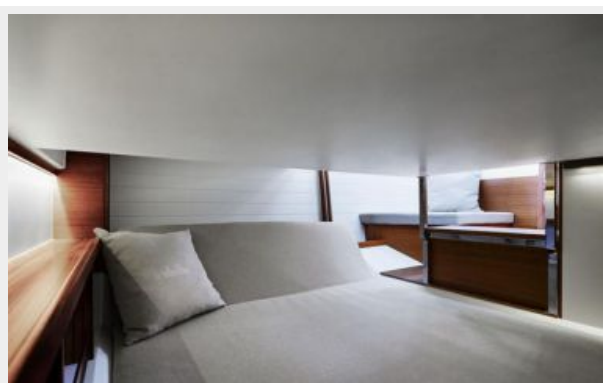
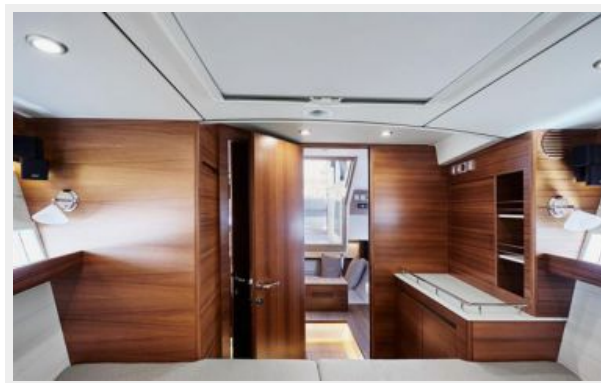
Owner's personal belongings.

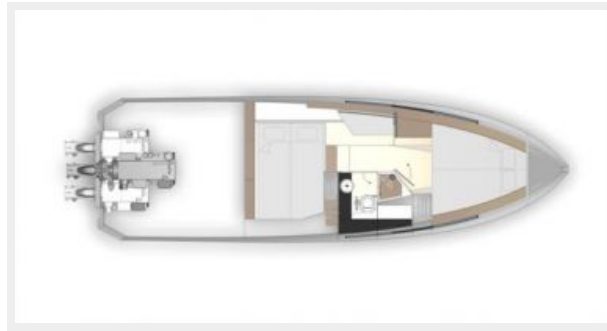
Disclaimer

The Company offers the details of this vessel or yacht in good faith but cannot guarantee or warrant the accuracy of this information nor warrant the condition of the vessel. A buyer should instruct his representatives, agents, or his surveyors, to investigate such details as the buyer desires validated. This vessel or yacht is offered subject to prior sale, price change, or withdrawal without notice.

PHOTOS







CONTACTS

Andrey Shestakov, leading yacht broker of the sales department of Shestakov Yacht Sales Inc. Shestakov Yacht Sales Inc., the official representative of the Miami/Fort Lauderdale FL headquarters.

Contact details

Email: **andrey@shestakovyachtsales.com**

Web: shestakovyachtsales.com/en/

Telephones

USA: **+1(954)274-4435**

Office hours

Monday – Saturday: **9:00 - 21:00 EDT**

Sunday: **closed**

Address



Harbour Towne Marina, 850 NE 3rd St,
STE 213, Dania, FL 33004