

INSHALLAH — HATTERAS



Судостроитель: HATTERAS

Год постройки: 2002

Модель: Катер для спортивной рыбалки

Цена: ЦЕНА ЯХТЫ ПО ЗАПРОСУ

Местонахождение: United States

Длина общая: 55' 0" (16.76m)

Ширина: 17' 4" (5.28m)

Макс. осадка: 5' 4" (1.63m)

Купить **INSHALLAH — HATTERAS** а также выбрать подходящую вам яхту из нашего каталога яхт вам поможет опытный яхтенный брокер Андрей Шестаков. На сегодняшний день компания **Shestakov Yacht Sales Inc.** имеет большое количество яхт в собственном списке продаж, а также тесно сотрудничает со всеми крупными яхтенными производителями по всему миру.

Для того чтобы купить яхту **INSHALLAH — HATTERAS** а также проконсультироваться по любому вопросу связанному с покупкой, продажей, чартером яхт позвоните по телефону **+7(918)465-66-44**.

ОГЛАВЛЕНИЕ

ОГЛАВЛЕНИЕ	2
ХАРАКТЕРИСТИКИ	6
Обзор	6
Основная информация	6
Размеры	6
Скорость, вместимость и масса	7
Размещение	7
Корпус и палуба	7
Информация о двигателе	7
ПОДРОБНОЕ ОПИСАНИЕ	8
Updates and Upgrades	8
Accommodations	8
Electronics and helm Details	11
Electrical Systems	12
Flybridge	12
Engine Compartment and Bilg	14
Exclusions	15
Исключения	15
Отказ от ответственности	15
ФОТОГРАФИИ	16
7174387_20191212142034909_1_XLARGE	16
7174387_20191212141944805_1_XLARGE	16
7174387_20191212141956791_1_XLARGE	16
7174387_20191212141951190_1_XLARGE	16
7174387_20191212142115385_1_XLARGE	16
7174387_20191212142100171_1_XLARGE	16
7174387_20191212142105279_1_XLARGE	17
7174387_20191212142110151_1_XLARGE	17

7174387_20191212142055123_1_XLARGE	17
7174387_20191212142130333_1_XLARGE	17
7174387_20191212142120242_1_XLARGE	17
7174387_20191212142133369_1_XLARGE	17
7174387_20191212142138459_1_XLARGE	18
7174387_20191212142143236_1_XLARGE	18
7174387_20191212142148317_1_XLARGE	18
7174387_20191212142200785_1_XLARGE	18
7174387_20191212142152442_1_XLARGE	18
7174387_20191212142209631_1_XLARGE	18
7174387_20191212142205511_1_XLARGE	19
7174387_20191212142214523_1_XLARGE	19
7174387_20191212142241749_1_XLARGE	19
7174387_20191212142222579_1_XLARGE	19
7174387_20191212142217675_1_XLARGE	19
7174387_20191212142226625_1_XLARGE	19
7174387_20191212142234646_1_XLARGE	20
7174387_20191212142238575_1_XLARGE	20
7174387_20191212142230697_1_XLARGE	20
7174387_20191212142259008_1_XLARGE	20
7174387_20191212142255024_1_XLARGE	20
7174387_20191212142306891_1_XLARGE	20
7174387_20191212142302866_1_XLARGE	21
7174387_20191212142321639_1_XLARGE	21
7174387_20191212142316948_1_XLARGE	21
7174387_20191212142311867_1_XLARGE	21
7174387_20191212142319730_1_XLARGE	21
7174387_20191212142323617_1_XLARGE	21
7174387_20191212142329243_1_XLARGE	22

7174387_20191212142331016_1_XLARGE	22
7174387_20191212142417784_1_XLARGE	22
7174387_20191212142332818_1_XLARGE	22
7174387_20191212142407406_1_XLARGE	23
7174387_20191212142403590_1_XLARGE	23
7174387_20191212142405501_1_XLARGE	23
7174387_20191212142411265_1_XLARGE	23
7174387_20191212142409324_1_XLARGE	24
7174387_20191212142414057_1_XLARGE	24
7174387_20191212142334583_1_XLARGE	24
7174387_20191212142336491_1_XLARGE	24
7174387_20191212142338406_1_XLARGE	24
7174387_20191212142340153_1_XLARGE	24
7174387_20191212142342232_1_XLARGE	25
7174387_20191212142352203_1_XLARGE	25
7174387_20191212142344088_1_XLARGE	25
7174387_20191212142354012_1_XLARGE	25
7174387_20191212142355954_1_XLARGE	26
7174387_20191212142357888_1_XLARGE	26
7174387_20191212142401676_1_XLARGE	26
7174387_20191212142359804_1_XLARGE	26
7174387_20191212143940133_1_XLARGE	26
7174387_20191212142428429_1_XLARGE	26
7174387_20191212142430444_1_XLARGE	27
7174387_20191212142434890_1_XLARGE	27
7174387_20191212142432479_1_XLARGE	27
7174387_20191212142437306_1_XLARGE	27
7174387_20191212142452218_1_XLARGE	27
7174387_20191212142439781_1_XLARGE	27

7174387_20191212142444113_1_XLARGE	28
7174387_20191212142449529_1_XLARGE	28
7174387_20191212142446870_1_XLARGE	28
7174387_20191212142441721_1_XLARGE	28
7174387_20191212142454531_1_XLARGE	28
7174387_20191212142508036_1_XLARGE	28
7174387_20191212142510071_1_XLARGE	29
7174387_20191212142512454_1_XLARGE	29
7174387_20191212142457060_1_XLARGE	29
7174387_20191212142503580_1_XLARGE	29
7174387_20191212142505887_1_XLARGE	29
7174387_20191212142514847_1_XLARGE	29
7174387_20191212142501370_1_XLARGE	30
7174387_20191212142459238_1_XLARGE	30
7174387_20191212142419888_1_XLARGE	30
7174387_20191212142422085_1_XLARGE	30
7174387_20191212142424370_1_XLARGE	30
7174387_20191212142004110_1_XLARGE	30
7174387_20191212142011293_1_XLARGE	31
7174387_20191212142024922_1_XLARGE	31
7174387_20191212142044041_1_XLARGE	31
КОНТАКТЫ	32
Контактная информация	32
Телефоны	32
Время работы	32
Адрес	32

ХАРАКТЕРИСТИКИ

Обзор

Major Price Reduction

NOW \$599,000

Do Not Miss One of only 2 "99-02" 55 Convertibles on the Market

2002 55' Hatteras 55 Convertible, Twin 1400hp 3412E Caterpillar Engines, Only 1820hrs, Dual 21.5kw Onan Generators 2002-2400hrs, 2018-210hrs, Complete Simrad Electronics Package 2016, 43,000BTUs of A/C, Hurricane II 6 Zone Diesel Heating, Bow Thruster with Joystick, Wireless Autopilot Remote, Back Down Station in Cockpit with 32" TV with KVH and Electronics Integrated! Complete EZ2CY Enclosure,

Never Tournament Fished, None Nicer

Основная информация

Тип судна: Катер для спортивной рыбалки

Подкатегория: Convertible

Модельный год: 2002

Год постройки: 2002

Страна: United States

Верх: Hardtop

Открытая палуба мостика: Да

Кубрик: Да

Размеры

Длина общая: 55' 0" (16.76m)

Ширина: 17' 4" (5.28m)

Макс. осадка: 5' 4" (1.63m)

Скорость, вместимость и масса

Водоизмещение: 74000 Pounds

Вместимость воды: 200 Gallons

Вместимость сточного бака: 100 Gallons **Объем топливного бака:** 1320 Gallons

Размещение

Всего кают: 3

Корпус и палуба

Материал корпуса: Fiberglass

Информация о двигателе

Двигатели: 2

Производитель: Caterpillar

Модель: 3412E

Тип двигателя: Inboard

Тип топлива: Diesel

ПОДРОБНОЕ ОПИСАНИЕ

Updates and Upgrades

2019

- New subzero refrigerator in galley
- Replaced galley water faucet with sprayer and soap dispenser

2018

- Teak cockpit dining table which is interchangeable with the rocket launcher. Both can be stored under the master bunk when not in use
- EZ2CY forward panels replaced on bridge enclosure
- All new carpeting throughout
- All new cushions in bridge
- All new padded head board in master stateroom
- All new dinette seating in saloon
- New leather barrel chair and ottoman in saloon
- Four New kettle adjustable chairs in cockpit
- New removable cockpit awning/sun shade
- Added second new generator, Onan Cummins 21.5kw with sound cover

2017

- New Simrad autopilot with handheld remote control
- New Simrad steering and auto pilot controller in cockpit driving station

2016

- New innerspring custom mattress with 4" pillow top in master stateroom
- Added five new swivel rod holders

2015

- Extended bow rail along gunnel to cockpit

Accommodations

- Air Conditioning, 43,000BTU, with reverse cycle heating, automatically staged, with individually controlled with Digital SMX controls
- Hurricane II 6 Zone, Diesel Heating System

Salon

- Beautiful Cherry Wood Interior
- 43" Samsung 4k Smart TV with Soundbar and DVD/Blu-ray Player
- Fusion MS-RX300 Remote with Multizone Quad Speakers in Salon, Cockpit, and Bridge
- Fluted Wood valances with 1" wood blinds
- Fixed frameless windows with tinted safety glass
- AC and DC light fixtures
- AC outlets
- Electric panels
- Stereo speakers
- Custom L-shaped lounge with rod storage
- Bottle and Glass Storage
- Stainless Steel threshold at salon door

Galley/Dinette

- Teak and Holly Sole
- Fluted wood valances with 1" wood blinds
- Fixed frameless windows with tinted safety glass
- Solid surface countertops with integral sink and storage cabinets
- SubZero undercounter refrigerator with 2 Drawers
- SubZero undercounter Freezer with 2 Drawers
- Whirlpool (4) Burner ceramic cooktop
- Sharp Microwave/Convection Oven
- Whirlpool Garbage Disposal
- L-Shaped dinette with storage under seat
- Electric water level gauge
- AC and DC light fixtures
- AC duplex outlets
- Drawer access to chart flat area via galley

Companionway

- DC lighting
- Flush panel doors with door stops to master stateroom, guest stateroom and head
- Steps to Salon with Storage underneath
- Access to port/starboard chart flat with DC light

Master Stateroom

- Fluted Wood Valance
- Queen-Sized tapered berth with upholstered headboard and cedar lined storage underneath, accessed by pneumatic cylinders
- Custom Innerspring Mattress with 4" Pillowtop
- Dual cedar-lined wardrobe locker with doors and automatic light
- Nightstand with storage compartments

- Dresser with drawers and mirror above
- 22" Samsung Smart HDTV
- AC and DC Light Fixtures
- AC outlets
- AM/FM/CD Stereo System with Speakers and Volume Control in other staterooms
- Full Length Mirror
- Private Access to Head with foot stop
- Air Conditioning with Digital SMX Control
- DC lights under berth

VIP Stateroom – Forward

- Queen-Sized tapered berth with upholstered headboard and cedar lined storage underneath, accessed by pneumatic cylinders
- Rope Storage locker Access
- Dual Cedar Lined Wardrobe Lockers with Automatic Light
- Overhead Storage Lockers, port and starboard
- Screened Overhead Hatch with Privacy Cover
- Nightstands, port and starboard
- 12" Flat Screen HDTV
- AC and DC light Fixtures
- AC Outlets
- Stereo Speakers with volume control
- Full length Mirror
- Private Access to head
- DC lights under berth

Guest Stateroom

- Finished Wood Bulkheads
- Upper and lower berths with storage under lower berth
- Storage Alcove (upper berth)
- Cedar-lined wardrobe locker with door and automatic light
- Full-length Mirror
- Whirlpool Washer/Dryer
- AC and DC Light Fixtures
- AC Outlets
- Stereo Speakers with volume Control
- Private Access to Head

Master Head and Guest Head

- Solid Surface Countertops with Solid surface backsplash, side splash, and integral sink over storage cabinet
- Hardwood Base Boards

- Separate Stall Shower with door and automatic enclosed sump pump
- Storage Cabinet with Mirror
- Screened Overhead Ventilator hatch with privacy cover
- Towel bar
- VacuFlush Head
- 120v AC Fan Blower
- AC and DC Lights
- AC Outlet
- Mirror
- DC Lights under toe kicks
- Air Conditioning Vent

Electronics and helm Details

- Simrad 64 Mile 4ft Open Array Radar
- KVH Satellite TV Dome with Receivers at Each TV
- Simrad 2kw Depth Sounder
- AIS Send and Receive Integrated
- **All Simrad Electronics Networked: GPS/Chart/Radar/Depth/Fish Finder/AutoPilot**

Flybridge

- Tournament Console with Power Actuated Electronics console
- (2) Simrad 20" Touchscreen Multifunction Displays (Networked)
- Simrad OP40 Button Control for Touchscreens
- Simrad Chip Port
- Simrad NSE12 Multifunction Display with Engine Readout (Networked)
- Simrad AM28 Autopilot with **WR10 Wireless Remote Control**
- Sidepower Bow Thruster Joystick Control
- (2) Guest Sport Light Controls
- Icom Marine VHF IC-M604 with AIS and Command Mic in Salon
- Icom Transceiver IC-M127 Marine VHF
- Ritchie 4" Flush mounted Lighted Compass
- Fusion 750 Stereo System AM/FM/Bluetooth and Mobile Dock
- Systems Monitor Readout, Visual and audible Signals for
 - Engine
 - High Bilge Water
 - Fire Warning in Engine Compartment
 - Halon Discharge
 - AC Power Loss
 - Smoke Detectors
 - ¾ Full Holding Tank Monitor

Starboard Backdown Station in Cockpit

- Engine Start/Stop
- Rudder Angle Indicator
- Sturdy Electronic Shift and Throttle Panel
- Simrad S35 Autopilot Steering Control
- Mirage TV Linked to KVH and Simrad Electronics
- Tackle Storage Below

Electrical Systems

- (2002) 21.5kw Onan Generator with Sound Shield 2440hrs
- (2018) 21.5kw Onan Cummins Generator with Sound Shield 210hrs
- (2) 24v banks of heavy duty 12v 8D batteries
- 240volt Phase Three Smart Battery Charger
- Automatic battery paralleling system with switch at control console
- (1) 240v, 50amp, fused transformer connected electrical inlet with cord
- (1) 240v, 50amp, transformer connected to Glendenning retractable shore cord with overcurrent protection
- AC and DC Light Fixtures
- AC duplex outlets with GFCI
- Battery control panel with fuses and isolation switches
- DC distribution panel with magnetic circuit breakers and battery condition meter
- DC distribution panel with magnetic circuit breakers in engine compartment
- DC electronics panel with magnetic circuit breakers at helm
- AC distribution panel with magnetic circuit breakers
- AC switching panel
 - Voltage Selector Switch
 - Volt Meter
 - Ampmeter
 - Frequency Meters
 - Generator Start/Stop Controls
 - Interlock Selector Breakers
- Ground fault protection on AC outlets and lighting circuits
- Navigation Lights
- SSB Radio ground screen laminated in cabin top

Flybridge

- Molded Fiberglass Top with Anodized aluminum rails and stanchions, and Integrated Spreader Lights
- Flybridge Venturi Windshield
- Complete EZ2CY/Isinglass Enclosure with (3) Forward Screened Vents
- Top Loading insulated and refrigerated Sea frost drink box to Port

- Two bench seats with removable cushions and storage underneath
- Additional storage area beneath console
- Neutral interlock switches
- Power Coated Grab Rails
- Control Station with all necessary switches and dimmable lighted instrument panel
- Engine synchronizer
- Pod console with custom wheel and Sturdy single lever shift and throttle controls (electronic) with emergency back up and trolling valve control switches
- Hydraulic power assisted steering
- Rudder angle indicator
- Stidd Helmsman and companion seats with adjustable backing plate
- Electric fuel level gauges
- AC weatherproof outlet
- Stereo speakers
- 24v DC distribution panel

Cockpit

- Molded Fiberglass, 157 square feet
- Refrigerated Box under Cockpit to Salon Steps
- Port and starboard hatches to lazarette and fuel tank connections
- Scuppers in cockpit and cockpit hatches
- Coaming Gate and Transom Door
- Seawater and freshwater wash down outlets with quick disconnect
- Shore water connection with pressure reducing valve and quick disconnect
- Bait and tackle center, including sink with faucet, cutting board, and tackle drawers to Port
- Double size bait freezer, drop-in (port)
- Removable 80" fishbox with macerator, flush in deck - with SeaFrost Refrigeration System, new in 2016
- Molded-in transom Livewell with Drain
- Door and hatch with lock to engine compartment
- Steps with molded in storage and door to Salon
- Fiberglass cockpit boarding step box
- DC overhead lights under flybridge overhang
- Mounting plate laminated in deck for fighting chair
- (4) Stainless Steel Rod Holders, flush mounted
- Stereo Speakers with volume controls

Deck Hardware and Miscellaneous

- Fiberglass Pulpit with Stainless Steel Anchor Chute and Roller
- Maxwell VWC 2000 Electric Windlass
- Stainless Steel Anchor Cleat
- (2) Stainless Steel Stern Cleats and Hawse Pipes
- (4) Stainless Steel Spring Cleats with Chafing Strips

- Stainless Steel Bow Cleats and Chocks with Chafing Strips
- Anodized Aluminum Bow Rail and Grab Rails – Extended Along Gunwale to Cockpit
- Marquipt 800lbs Davit with Chocks on Bow
- Triple Spread Outriggers
- Power Coated Grab Rails on Cabin side and Flybridge Interior
- Anodized Aluminum Flybridge Ladder with Starboard Steps
- Fog Bell
- Zincs on Rudders and Shafts
- Dual Air/Electric Horns
- Bennett Stainless Steel Trim Tabs with Zincs
- Integral Manganese Bronze Struts
- Manganese Bronze Rudders
- (7) Bladed Propellers, Nibral
- Stainless Steel Shafts, 3.5”
- Dripless Shaft Logs
- Central Vacuum System
- Stainless Steel Reboarding Steps in Cockpit
- Heavy Duty Bronze Engine Couplings

Engine Compartment and Bilg

- AC Fluorescent Lights
- DC Lights
- DC Bilge Blower
- Engine Equipment (Each)
 - Freshwater Cooled
 - ZF Marine Gears
 - Electric Trolling Valves
 - Neutral Interlocks
 - Hour Meters
 - Alternators
 - Dual Racor Fuel Filters
 - External Seawater Strainers
 - Exhaust Silencers
- Generator Equipment (Each)
 - Seawater Strainers
 - Remote Start
 - Racor Fuel Filter
 - Hour Meter
 - Water Lift Muffler
 - Sound Shield
- AMI Voyage 800 Water Maker - 600gpd
- Fiberglass Air intake System for engine room and engine intakes with baffling and filters

- Halon System
- Pressurized 230v AC Freshwater Pump with pressure tank and freshwater filter
- 230v AC 30 Gallon Electric Water Heater
- Freshwater Hose with Quick Disconnect
- (3) 24v Bilge and Sum Pumps, with heavy duty float switches and protective guards
- Bronze Ball Valves through bolted in solid fiberglass
- Fuel Tanks painted in fire retardant paint
- Monitoring Consoles for Main Engines include all necessary gauges, start, and stop switches
- 110v AC reversible oil changing system for engines, gear, and generator with quick disconnects
- Electric Fuel Priming Pumps for engines
- Electric fuel transfer system with filtration and dry tank protection for pump
- Seawater pressure system with AC pump and expansion tank
- Stainless Steel grab rails
- Painted engine room and bilges
- Isolated discharge sea chests
- Transducer well
- Sealed Shower Sumps
- Fiberglass Rudder Shelf
- 1" Stainless Steel Tie Bar on rudders

Exclusions

- Dinghy and Outboard Not Part of Sale
- Owner's Personal Items, Fishing Tackle and Rods, and Tools

Исключения

При продаже яхты исключаются личные вещи владельца.

Отказ от ответственности

Компания предоставляет описание судна или яхты добросовестно, но не может гарантировать точность этой информации, а также не ручается за техническое состояние. Покупатель должен проинструктировать своих агентов или оценщиков исследовать представленную информацию более подробно, по собственному желанию. Продажа судна или яхты, изменение цены или снятие с продажи будет происходить без предварительного уведомления.

ФОТОГРАФИИ

7174387_20191212142034909_1_XLARGE



7174387_20191212141944805_1_XLARGE



7174387_20191212141956791_1_XLARGE



7174387_20191212141951190_1_XLARGE



7174387_20191212142115385_1_XLARGE



7174387_20191212142100171_1_XLARGE



7174387_20191212142105279_1_XLARGE



7174387_20191212142110151_1_XLARGE



7174387_20191212142055123_1_XLARGE



7174387_20191212142130333_1_XLARGE



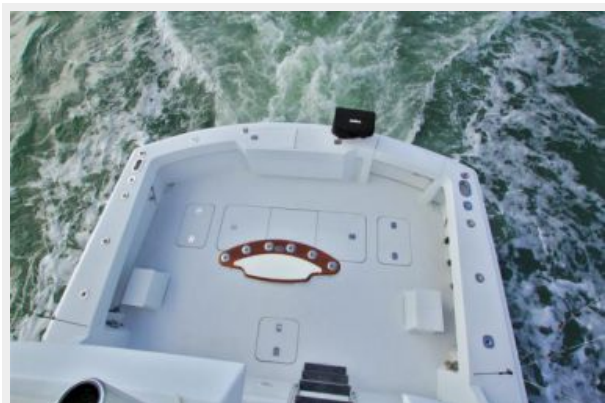
7174387_20191212142120242_1_XLARGE



7174387_20191212142133369_1_XLARGE



7174387_20191212142138459_1_XLARGE



7174387_20191212142143236_1_XLARGE



7174387_20191212142148317_1_XLARGE



7174387_20191212142200785_1_XLARGE



7174387_20191212142152442_1_XLARGE



7174387_20191212142209631_1_XLARGE



7174387_20191212142205511_1_XLARGE



7174387_20191212142214523_1_XLARGE



7174387_20191212142241749_1_XLARGE



7174387_20191212142222579_1_XLARGE



7174387_20191212142217675_1_XLARGE



7174387_20191212142226625_1_XLARGE



7174387_20191212142234646_1_XLARGE



7174387_20191212142238575_1_XLARGE



7174387_20191212142230697_1_XLARGE



7174387_20191212142259008_1_XLARGE



7174387_20191212142255024_1_XLARGE



7174387_20191212142306891_1_XLARGE



7174387_20191212142302866_1_XLARGE



7174387_20191212142321639_1_XLARGE



7174387_20191212142316948_1_XLARGE



7174387_20191212142311867_1_XLARGE



7174387_20191212142319730_1_XLARGE



7174387_20191212142323617_1_XLARGE



7174387_20191212142329243_1_XLARGE



7174387_20191212142331016_1_XLARGE



7174387_20191212142417784_1_XLARGE

7174387_20191212142332818_1_XLARGE



7174387_20191212142407406_1_XLARGE



7174387_20191212142403590_1_XLARGE



7174387_20191212142405501_1_XLARGE



7174387_20191212142411265_1_XLARGE



7174387_20191212142409324_1_XLARGE



7174387_20191212142414057_1_XLARGE



7174387_20191212142334583_1_XLARGE



7174387_20191212142336491_1_XLARGE



7174387_20191212142338406_1_XLARGE



7174387_20191212142340153_1_XLARGE



7174387_20191212142342232_1_XLARGE



7174387_20191212142352203_1_XLARGE



7174387_20191212142344088_1_XLARGE



7174387_20191212142354012_1_XLARGE



7174387_20191212142355954_1_XLARGE



7174387_20191212142357888_1_XLARGE



7174387_20191212142401676_1_XLARGE



7174387_20191212142359804_1_XLARGE



7174387_20191212143940133_1_XLARGE



7174387_20191212142428429_1_XLARGE



7174387_20191212142430444_1_XLARGE



7174387_20191212142434890_1_XLARGE



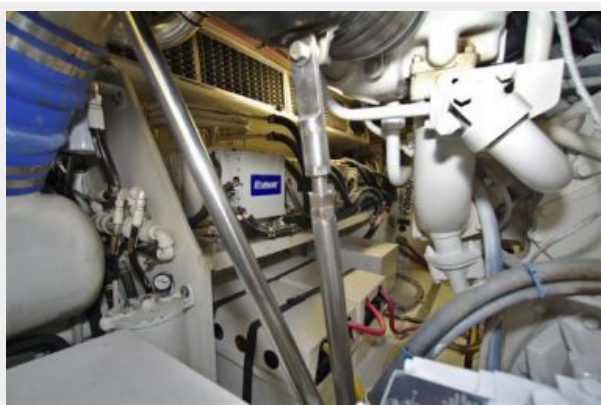
7174387_20191212142432479_1_XLARGE



7174387_20191212142437306_1_XLARGE



7174387_20191212142452218_1_XLARGE



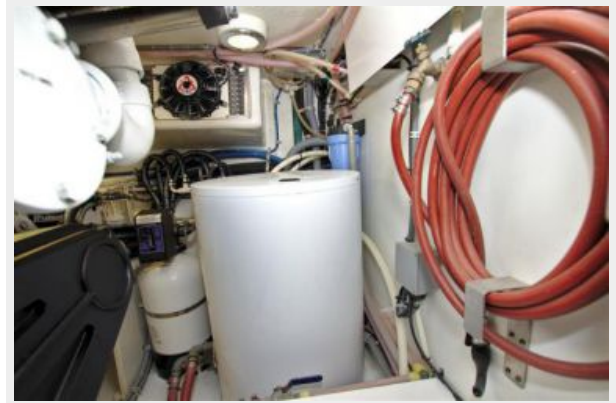
7174387_20191212142439781_1_XLARGE



7174387_20191212142444113_1_XLARGE



7174387_20191212142449529_1_XLARGE



7174387_20191212142446870_1_XLARGE



7174387_20191212142441721_1_XLARGE



7174387_20191212142454531_1_XLARGE



7174387_20191212142508036_1_XLARGE



7174387_20191212142510071_1_XLARGE



7174387_20191212142512454_1_XLARGE



7174387_20191212142457060_1_XLARGE



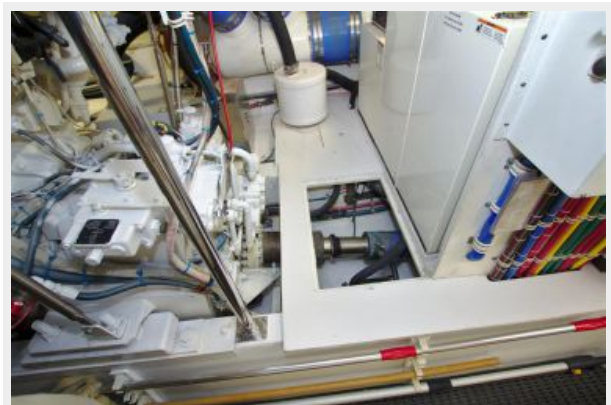
7174387_20191212142503580_1_XLARGE



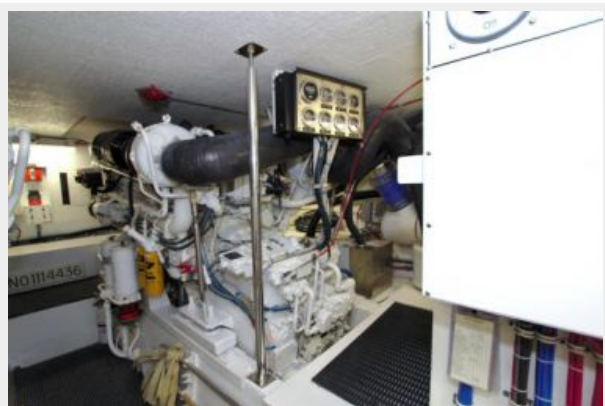
7174387_20191212142505887_1_XLARGE



7174387_20191212142514847_1_XLARGE



7174387_20191212142501370_1_XLARGE



7174387_20191212142459238_1_XLARGE



7174387_20191212142419888_1_XLARGE



7174387_20191212142422085_1_XLARGE



7174387_20191212142424370_1_XLARGE



7174387_20191212142004110_1_XLARGE



7174387_20191212142011293_1_XLARGE



7174387_20191212142024922_1_XLARGE



7174387_20191212142044041_1_XLARGE



КОНТАКТЫ

Андрей Шестаков (Andrey Shestakov) – ведущий яхтенный брокер отдела продаж яхт и судов компании Shestakov Yacht Sales Inc. Официальный представитель Shestakov Yacht Sales Inc. для русскоговорящих клиентов в центральном офисе компании в Майами/Форт Лодердейл/Флорида/США.

Контактная информация

Email: andrey@shestakovyachtsales.com

Web: shestakovyachtsales.com

Телефоны

Краснодарский край: **+7(918)465-66-44**

США, Майами, Флорида: **+1(954)274-4435**

Время работы

Понедельник – Суббота: **9:00 - 21:00**
EDT

Воскресенье: **Закрито**

Адрес



Harbour Towne Marina, 850 NE 3rd St,
STE 213, Dania, FL 33004