

## PEG LEG — SEA RAY



**Builder:** SEA RAY

**LOA:** 45' 0" (13.72m)

**Year Built:** 2000

**Beam:** 14' 8" (4.47m)

**Model:** Cruiser

**Price:** PRICE ON APPLICATION

**Location:** United States

Our experienced yacht broker, Andrey Shestakov, will help you choose and buy a yacht that best suits your needs **Peg Leg — SEA RAY** from our catalogue. Presently, at Shestakov Yacht Sales Inc., we have a wide variety of yachts available on our sale's list. We also work in close contact with all the big yacht manufacturers from all over the world.

If you would like to buy a yacht **Peg Leg — SEA RAY** or would like help answering any questions concerning purchasing, selling or chartering a yacht, please call **+1(954)274-4435**

# TABLE OF CONTENTS

TABLE OF CONTENTS	2
SPECIFICATIONS	6
Overview	6
Basic Information	6
Dimensions	7
Speed, Capacities and Weight	7
Accommodations	7
Hull and Deck Information	7
Engine Information	7
DETAILED INFORMATION	8
Upgrades	8
Salon and Galley	8
Galley	8
Helm	8
Electronics	9
Engine and Mechanical	9
Exclusions	10
Disclaimer	10
PHOTOS	11
Forward Salon	11
Salon Seating	11
Starboard Salon	11
Upgraded Salon TV	11
Salon Flooring	11
Galley	11
Forward Master Flooring	12
Forward Master	12
Forward Master	12

Forward master TV	12
Forward Master Flooring	13
Master Head	13
Master Head Shower	13
Master Head	13
VIP Stateroom	14
VIP Stateroom	14
Guest Head	14
VIP Stateroom	14
Guest Head	15
Aft Stateroom	15
Washer - Dryer in Aft Stateroom	15
Helm	15
Helm	16
Helm	16
Helm	16
Helm	16
Helm	16
Bridge	16
Helm	16
Bridge Seating	17
Raymarine VHF	17
Upgraded Electronics	17
New Speakers	17
Icemaker	18
Foredeck Entrance	18
Foredeck Entrance	18
Foredeck Entrance	18
Windlass	19
Fordeck	19

---

Foredeck Entrance	19
Foredeck	19
Foredeck Seating	19
Cockpit	19
Cockpit	20
Cockpit	20
Swim Platform	20
Flexi-Teak	20
Forward View	20
Port Profile	20
Port Aft Quarter	21
Port Forward Quarter	21
Starboard Aft Quarter	21
Stern	21
Starboard Forward Quarter	21
Starboard Profile	21
Running Shot	22
At Dock in Clearwater	22
Stateroom Layout	22
Salon Layout	22
360 View	22
Walk Through Bridge Layout	22
360 View	23
360 View	23
360 View	23
360 View	23
360 View	24
360 View	24
360 View	24

---

---

CONTACTS	25
-----	-----
Contact details	25
-----	-----
Telephones	25
-----	-----
Office hours	25
-----	-----
Address	25
-----	-----

---

# SPECIFICATIONS

---

## Overview

---

Here is a unique opportunity to own a diesel 450 Express Bridge that can do it all; whether it be cruising, fishing or just taking advantage of all the outdoor space and function this multipurpose vessel enjoys. She has reliable and proven Cummins 6CTA's for power that were just fully serviced along with her generator and is ready to go. Her recent electronics upgrades include Upgraded Chart, Radar, Autopilot and Fishfinder. Other upgraded items include Custom hardwood interior flooring, flatscreen TV's and new tan full canvas with enclosure. Sea Ray truly moved the innovation bar up a notch when they introduced the 450 Sedan Bridge. It isn't just her sleek styling that draws attention; the real innovation is below where Sea Ray designers were able to incorporate a unique floorplan whose raised salon dinette conceals three staterooms below. The aft stateroom, which is accessed via a private entryway next to the salon door, includes a full-length bed with a hanging locker and built-in washer/dryer. Guests in the amidships stateroom have direct access to one of two heads, and the forward stateroom is fitted with a pedestal bed as well as a full entertainment center. High gloss cherry cabinetry, faux granite countertops and vinyl overheads highlight her upscale European styled voluminous interior. Topside, the party-time flybridge has an L-shaped centerline helm with a wet bar and seating for a small crowd. A door in the forward bridge coaming provides easy & quick access to the foredeck. Her underwater exhausts make her quieter than other similar models. Her expansive cockpit offers aft seating with storage, a fishbox, livewell, Custom Flexi-Teak cockpit sole is on the bridge, cockpit, and extended swim platform. Her twin recently serviced Cummins diesels cruise her at 23 knots and top out around 28 knots. This vessel was used on freshwater for the vast majority of her life. Call for your easy showing on beautiful Clearwater Beach, you will not be disappointed!

---

## Basic Information

---

**Category:** Cruiser

**Sub Category:** Express

**Model Year:** 2000

**Year Built:** 2000

**Country:** United States

**Registration #:** 1099809

**Fly Bridge:** Yes

**Cockpit:** Yes

---

## Dimensions

---

**LOA:** 45' 0" (13.72m)

**Beam:** 14' 8" (4.47m)

**MFG Length:** 45' 0" (13.72m)

---

## Speed, Capacities and Weight

---

**Water Capacity:** 100 Gallons

**Holding Tank:** 60 Gallons

**Fuel Capacity:** 400 Gallons

---

## Accommodations

---

**Total Cabins:** 3

**Sleeps:** 6

**Total Heads:** 2

---

## Hull and Deck Information

---

**Hull Material:** Fiberglass

---

## Engine Information

---

**Engines:** 2

**Manufacturer:** Cummins

**Model:** 6CTA 8.3-M3

**Engine Type:** Inboard

**Fuel Type:** Diesel

---

# DETAILED INFORMATION

---

## Upgrades

---

- Salon Flatscreen TVs in Salon, VIP Stateroom and Master
- Custom Installed Hardwood Flooring in Salon, VIP Stateroom and Master
- New Tan Canvas and Eisenglass Enclosure
- Bridge and Cockpit Sea Dek Sole
- All Newer Electronics

## Salon and Galley

---

- Custom Hardwood Flooring
- Popular High Gloss Vitricor Cherry Cabinetry
- U-Shaped Leatherette Sofa/Dinette
- Two Bar Stools
- Large Flatscreen Television/DVD Combination
- Central Vacuum System
- Faux Granite Counter Tops
- Hi-Lo Dinette/Cocktail Table
- Entertainment Center
- Sound System
- Washer / Dryer Combo

## Galley

---

- Microwave/Convection Oven
- Kenyon, 3-Burner Electric Stove
- Pressurized Fresh Water System
- Hot Water Heater
- Lots of Cabinet and Storage Space
- Full size Refrigerator/Freezer
- Galley Breakfast Bar Stools
- Stainless Steel Sink
- Faux Granite Counter Tops

## Helm

---

- Flybridge Engine Controls
- Horn



- Bow Thruster
- Remote Anchor Windlass
- Walk-Thru Stairwell from Flybridge to Bow Area
- Ritchie Compass
- Radar Arch
- Recently Replaced Bimini Top with Full Enclosure
- Wet Bar
- VHF Marine Radio
- ACR Remote Spotlight
- Sea Ray Systems Monitor
- Sound System with New Speakers

---

## Electronics

---

- Raymarine Auto Pilot P70r
- Lowrance HDS7 Generation 3 Sonar - Fishfinder
- Raymarine A Series Chartplotter multifunction display with Navionics auto route
- Radar - 4kw Digital Raydome
- VHF – Raymarine (Updated)

---

## Engine and Mechanical

---

- Three Reverse Cycle Heat and Air Conditioning Units
- Dripless Shaft Logs
- Engine Synchronizers
- Automatic Oil Transfer System
- Engine Hour Meters
- Dual Racor Fuel Filters
- Raw Water Sea Strainers
- Holding Tank
- Automatic Fire Extinguishing
- Engine Room Sound Insulation
- 2/110-Volt Electrical System
- 10-KW Westerbeke Generator
- Battery Condition Gauge
- Batteries
- Power Electrical Cable Reel
- Bennett Trim Tabs
- Electrical Bonding System
- Voltage Meter
- 50-Amp Automatic Battery Charger
- Battery Parallel Switch

- Glendenning Cable Master
- Automatic and Manual Bilge Pumps

## Exclusions

---

Owner's personal belongings.

## Disclaimer

---

The Company offers the details of this vessel or yacht in good faith but cannot guarantee or warrant the accuracy of this information nor warrant the condition of the vessel. A buyer should instruct his representatives, agents, or his surveyors, to investigate such details as the buyer desires validated. This vessel or yacht is offered subject to prior sale, price change, or withdrawal without notice.

# PHOTOS

**Forward Salon**



**Salon Seating**



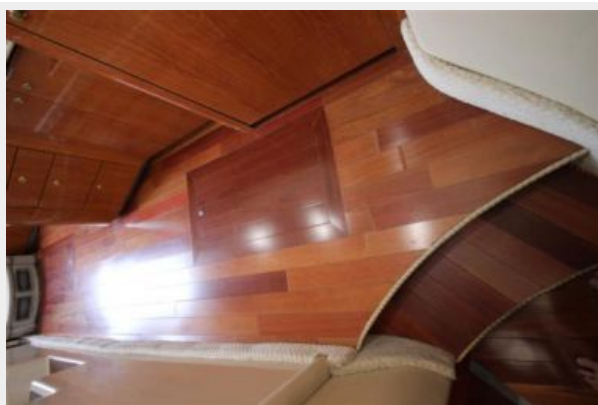
**Starboard Salon**



**Upgraded Salon TV**



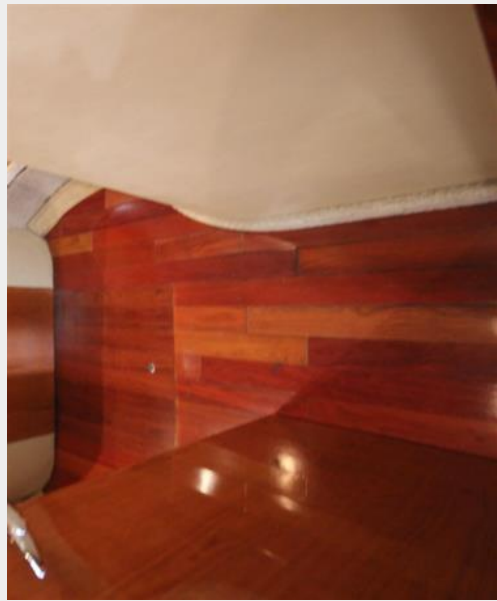
**Salon Flooring**



**Galley**



**Forward Master Flooring**



**Forward Master**



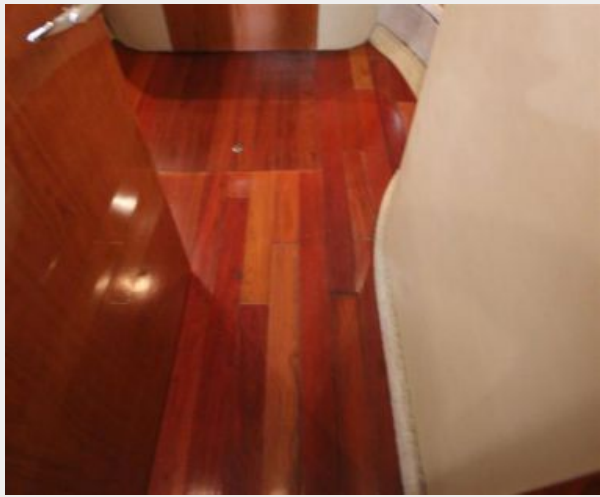
**Forward Master**



**Forward master TV**



**Forward Master Flooring**



**Master Head**



**Master Head Shower**



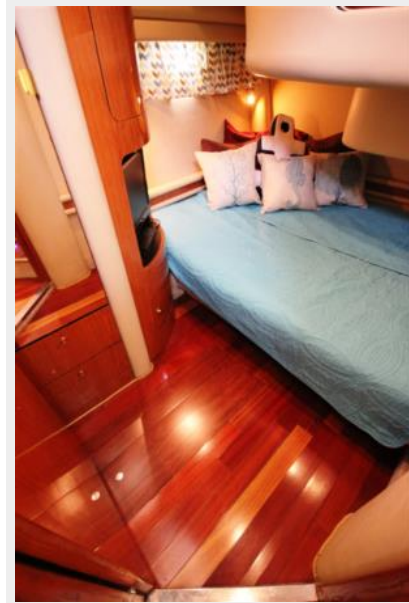
**Master Head**



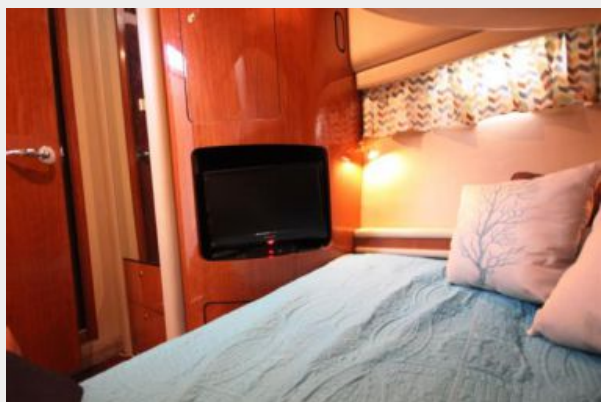
**VIP Stateroom**



**VIP Stateroom**



**VIP Stateroom**



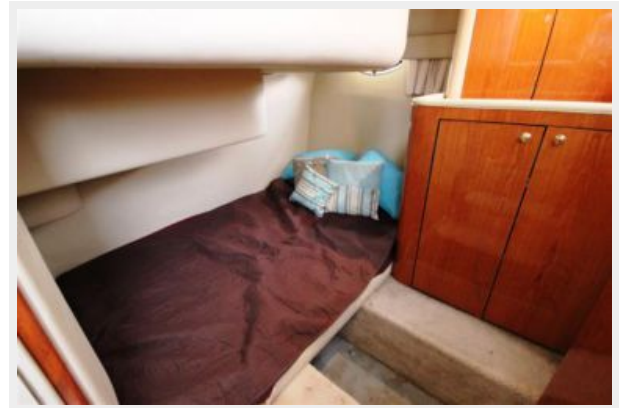
**Guest Head**



**Guest Head**



**Aft Stateroom**



**Washer - Dryer in Aft Stateroom**



**Helm**



Helm



Helm



Helm



Helm



Helm



Bridge





### Bridge Seating



### Raymarine VHF



### Upgraded Electronics



### New Speakers



**Icemaker**



**Foredeck Entrance**



**Foredeck Entrance**



**Foredeck Entrance**



**Fordeck**



**Windlass**



**Foredeck Entrance**



**Foredeck**



**Foredeck Seating**



**Cockpit**



**Cockpit**



**Cockpit**



**Swim Platform**



**Flexi-Teak**



**Forward View**



**Port Profile**



**Port Forward Quarter**



**Port Aft Quarter**



**Stern**



**Starboard Aft Quarter**



**Starboard Forward Quarter**



**Starboard Profile**



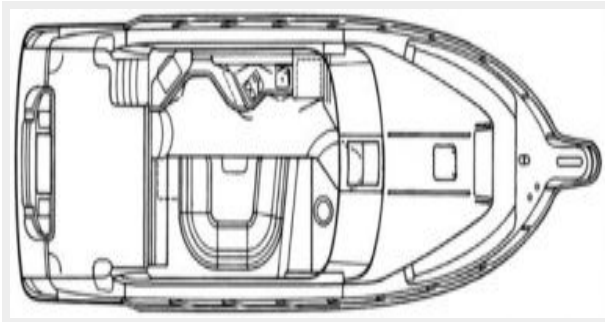
**At Dock in Clearwater**



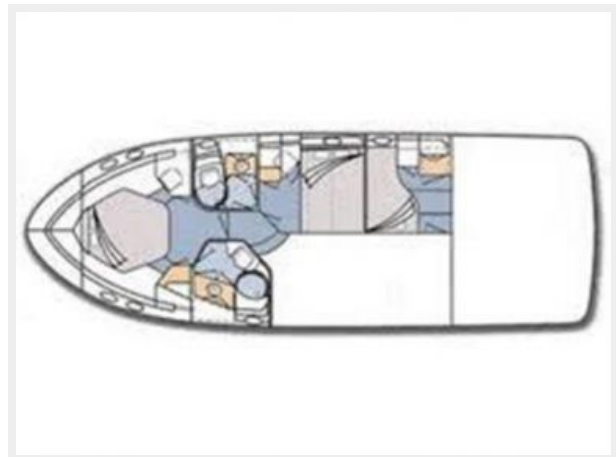
**Running Shot**



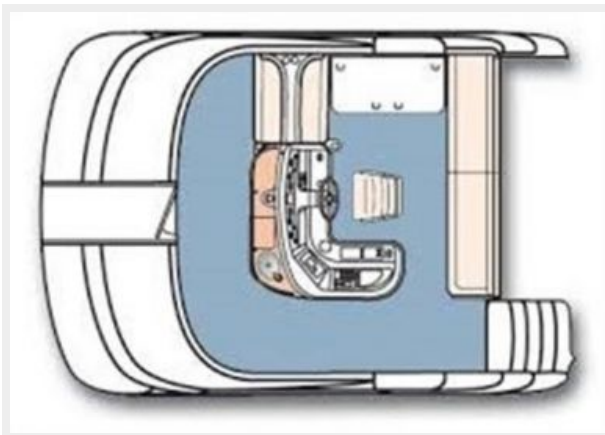
**Salon Layout**



**Stateroom Layout**



**Walk Through Bridge Layout**



**360 View**



**360 View**



**360 View**



**360 View**



**360 View**



**360 View**



**360 View**



**360 View**





# CONTACTS

---

Andrey Shestakov, leading yacht broker of the sales department of Shestakov Yacht Sales Inc. Shestakov Yacht Sales Inc., the official representative of the Miami/Fort Lauderdale FL headquarters.

## Contact details

---

Email: [andrey@shestakovyachtsales.com](mailto:andrey@shestakovyachtsales.com)

Web: [shestakovyachtsales.com/en/](http://shestakovyachtsales.com/en/)

## Telephones

---

USA: +1(954)274-4435

## Office hours

---

Monday – Saturday: **9:00 - 21:00** EDT

Sunday: **closed**

## Address

---



Harbour Towne Marina, 850 NE 3rd St,  
STE 213, Dania, FL 33004