

PEG LEG — SEA RAY



Судостроитель: SEA RAY

Год постройки: 2000

Модель: Крейсер

Цена: ЦЕНА ЯХТЫ ПО ЗАПРОСУ

Местонахождение: United States

Длина общая: 45' 0" (13.72m)

Ширина: 14' 8" (4.47m)

Купить Peg Leg — SEA RAY а также выбрать подходящую вам яхту из нашего каталога яхт вам поможет опытный яхтенный брокер Андрей Шестаков. На сегодняшний день компания Shestakov Yacht Sales Inc. имеет большое количество яхт в собственном списке продаж, а также тесно сотрудничает со всеми крупными яхтенными производителями по всему миру.

Для того чтобы купить яхту Peg Leg — SEA RAY а также проконсультироваться по любому вопросу связанному с покупкой, продажей, чартером яхт позвоните по телефону **+7(918)465-66-44**.

ОГЛАВЛЕНИЕ

ОГЛАВЛЕНИЕ	2
ХАРАКТЕРИСТИКИ	6
Обзор	6
Основная информация	6
Размеры	7
Скорость, вместимость и масса	7
Размещение	7
Корпус и палуба	7
Информация о двигателе	7
ПОДРОБНОЕ ОПИСАНИЕ	8
Upgrades	8
Salon and Galley	8
Galley	8
Helm	8
Electronics	9
Engine and Mechanical	9
Исключения	10
Отказ от ответственности	10
ФОТОГРАФИИ	11
Forward Salon	11
Salon Seating	11
Starboard Salon	11
Upgraded Salon TV	11
Salon Flooring	11
Galley	11
Forward Master Flooring	12
Forward Master	12
Forward Master	12

Forward master TV	12
Forward Master Flooring	13
Master Head	13
Master Head Shower	13
Master Head	13
VIP Stateroom	14
VIP Stateroom	14
Guest Head	14
VIP Stateroom	14
Guest Head	15
Aft Stateroom	15
Washer - Dryer in Aft Stateroom	15
Helm	15
Helm	16
Helm	16
Helm	16
Helm	16
Bridge	16
Helm	16
Bridge Seating	17
Raymarine VHF	17
Upgraded Electronics	17
New Speakers	17
Icemaker	18
Foredeck Entrance	18
Foredeck Entrance	18
Foredeck Entrance	18
Windlass	19
Fordeck	19

Foredeck Entrance	19
Foredeck	19
Foredeck Seating	19
Cockpit	19
Cockpit	20
Cockpit	20
Swim Platform	20
Flexi-Teak	20
Forward View	20
Port Profile	20
Port Aft Quarter	21
Port Forward Quarter	21
Starboard Aft Quarter	21
Stern	21
Starboard Forward Quarter	21
Starboard Profile	21
Running Shot	22
At Dock in Clearwater	22
Stateroom Layout	22
Salon Layout	22
360 View	22
Walk Through Bridge Layout	22
360 View	23
360 View	23
360 View	23
360 View	23
360 View	24
360 View	24
360 View	24

КОНТАКТЫ	25
-----	-----
Контактная информация	25
-----	-----
Телефоны	25
-----	-----
Время работы	25
-----	-----
Адрес	25
-----	-----

ХАРАКТЕРИСТИКИ

Обзор

Here is a unique opportunity to own a diesel 450 Express Bridge that can do it all; whether it be cruising, fishing or just taking advantage of all the outdoor space and function this multipurpose vessel enjoys. She has reliable and proven Cummins 6CTA's for power that were just fully serviced along with her generator and is ready to go. Her recent electronics upgrades include Upgraded Chart, Radar, Autopilot and Fishfinder. Other upgraded items include Custom hardwood interior flooring, flatscreen TV's and new tan full canvas with enclosure. Sea Ray truly moved the innovation bar up a notch when they introduced the 450 Sedan Bridge. It isn't just her sleek styling that draws attention; the real innovation is below where Sea Ray designers were able to incorporate a unique floorplan whose raised salon dinette conceals three staterooms below. The aft stateroom, which is accessed via a private entryway next to the salon door, includes a full-length bed with a hanging locker and built-in washer/dryer. Guests in the amidships stateroom have direct access to one of two heads, and the forward stateroom is fitted with a pedestal bed as well as a full entertainment center. High gloss cherry cabinetry, faux granite countertops and vinyl overheads highlight her upscale European styled voluminous interior. Topside, the party-time flybridge has an L-shaped centerline helm with a wet bar and seating for a small crowd. A door in the forward bridge coaming provides easy & quick access to the foredeck. Her underwater exhausts make her quieter than other similar models. Her expansive cockpit offers aft seating with storage, a fishbox, livewell, Custom Flexi-Teak cockpit sole is on the bridge, cockpit, and extended swim platform. Her twin recently serviced Cummins diesels cruise her at 23 knots and top out around 28 knots. This vessel was used on freshwater for the vast majority of her life. Call for your easy showing on beautiful Clearwater Beach, you will not be disappointed!

Основная информация

Тип судна: Крейсер

Подкатегория: Express

Модельный год: 2000

Год постройки: 2000

Страна: United States

Регистрационный номер: 1099809

Открытая палуба мостика: Да

Кубрик: Да

Размеры

Длина общая: 45' 0" (13.72m)

Ширина: 14' 8" (4.47m)

Длина привального бруса: 45' 0"
(13.72m)

Скорость, вместимость и масса

Вместимость воды: 100 Gallons

Вместимость сточного бака: 60 Gallons

Объем топливного бака: 400 Gallons

Размещение

Всего кают: 3

Спальные места: 6

Всего ком. состава: 2

Корпус и палуба

Материал корпуса: Fiberglass

Информация о двигателе

Двигатели: 2

Производитель: Cummins

Модель: 6CTA 8.3-M3

Тип двигателя: Inboard

Тип топлива: Diesel

ПОДРОБНОЕ ОПИСАНИЕ

Upgrades

- Salon Flatscreen TVs in Salon, VIP Stateroom and Master
- Custom Installed Hardwood Flooring in Salon, VIP Stateroom and Master
- New Tan Canvas and Eisenglass Enclosure
- Bridge and Cockpit Sea Dek Sole
- All Newer Electronics

Salon and Galley

- Custom Hardwood Flooring
- Popular High Gloss Vitricor Cherry Cabinetry
- U-Shaped Leatherette Sofa/Dinette
- Two Bar Stools
- Large Flatscreen Television/DVD Combination
- Central Vacuum System
- Faux Granite Counter Tops
- Hi-Lo Dinette/Cocktail Table
- Entertainment Center
- Sound System
- Washer / Dryer Combo

Galley

- Microwave/Convection Oven
- Kenyon, 3-Burner Electric Stove
- Pressurized Fresh Water System
- Hot Water Heater
- Lots of Cabinet and Storage Space
- Full size Refrigerator/Freezer
- Galley Breakfast Bar Stools
- Stainless Steel Sink
- Faux Granite Counter Tops

Helm

- Flybridge Engine Controls
- Horn

- Bow Thruster
- Remote Anchor Windlass
- Walk-Thru Stairwell from Flybridge to Bow Area
- Ritchie Compass
- Radar Arch
- Recently Replaced Bimini Top with Full Enclosure
- Wet Bar
- VHF Marine Radio
- ACR Remote Spotlight
- Sea Ray Systems Monitor
- Sound System with New Speakers

Electronics

- Raymarine Auto Pilot P70r
- Lowrance HDS7 Generation 3 Sonar - Fishfinder
- Raymarine A Series Chartplotter multifunction display with Navionics auto route
- Radar - 4kw Digital Raydome
- VHF – Raymarine (Updated)

Engine and Mechanical

- Three Reverse Cycle Heat and Air Conditioning Units
- Dripless Shaft Logs
- Engine Synchronizers
- Automatic Oil Transfer System
- Engine Hour Meters
- Dual Racor Fuel Filters
- Raw Water Sea Strainers
- Holding Tank
- Automatic Fire Extinguishing
- Engine Room Sound Insulation
- 2/110-Volt Electrical System
- 10-KW Westerbeke Generator
- Battery Condition Gauge
- Batteries
- Power Electrical Cable Reel
- Bennett Trim Tabs
- Electrical Bonding System
- Voltage Meter
- 50-Amp Automatic Battery Charger
- Battery Parallel Switch

- Glendenning Cable Master
- Automatic and Manual Bilge Pumps

Исключения

При продаже яхты исключаются личные вещи владельца.

Отказ от ответственности

Компания предоставляет описание судна или яхты добросовестно, но не может гарантировать точность этой информации, а также не ручается за техническое состояние. Покупатель должен проинструктировать своих агентов или оценщиков исследовать представленную информацию более подробно, по собственному желанию. Продажа судна или яхты, изменение цены или снятие с продажи будет происходить без предварительного уведомления.

ФОТОГРАФИИ

Forward Salon



Salon Seating



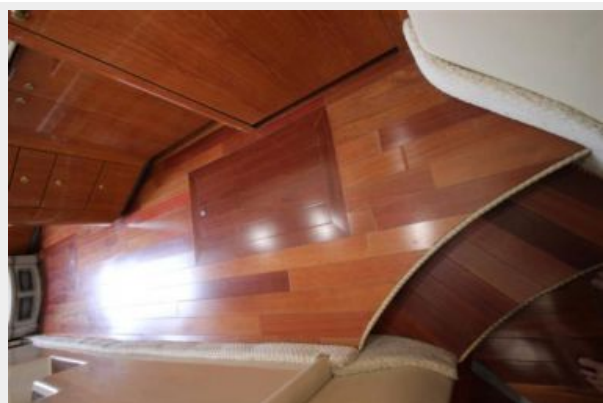
Starboard Salon



Upgraded Salon TV



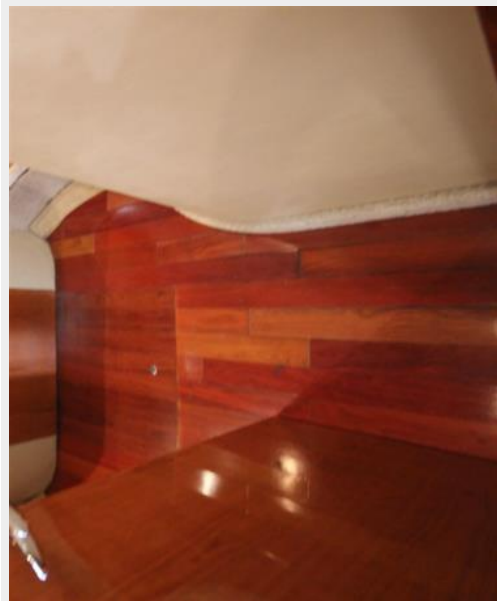
Salon Flooring



Galley



Forward Master Flooring



Forward Master



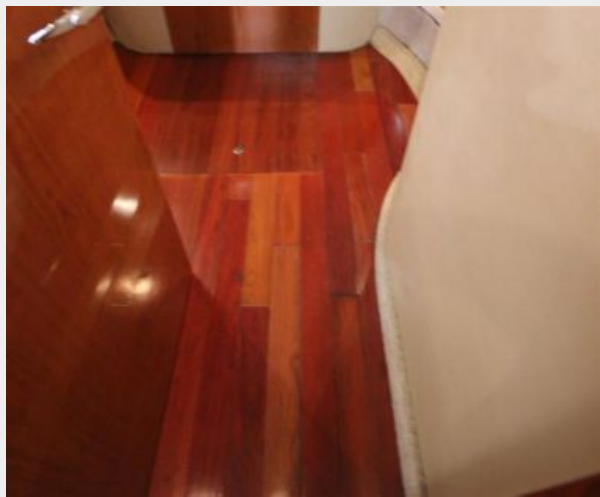
Forward Master



Forward master TV



Forward Master Flooring



Master Head



Master Head Shower



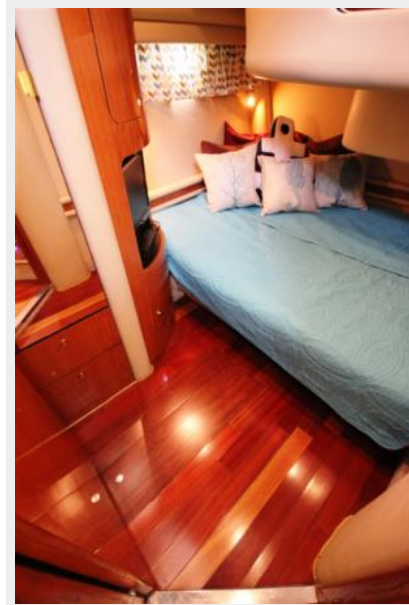
Master Head



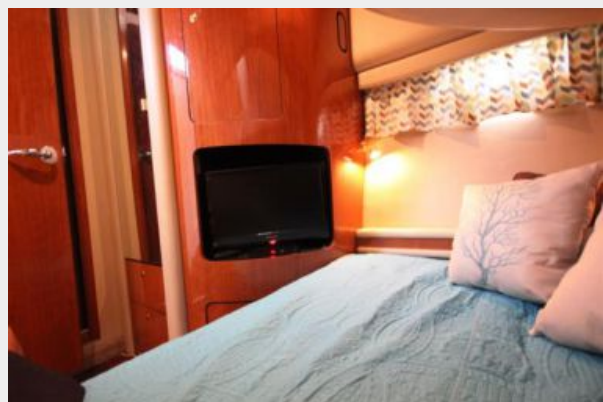
VIP Stateroom



VIP Stateroom



VIP Stateroom



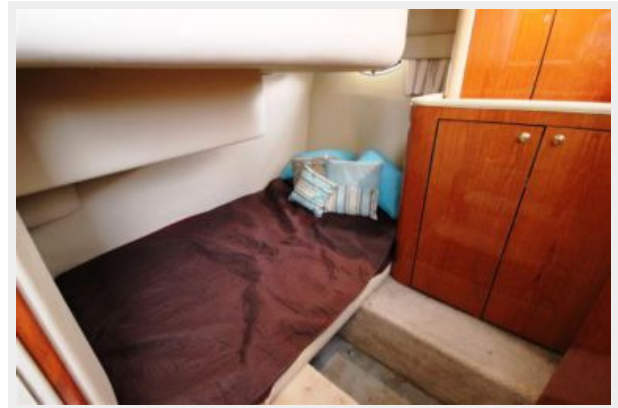
Guest Head



Guest Head



Aft Stateroom



Washer - Dryer in Aft Stateroom



Helm



Helm



Helm



Helm



Helm



Helm



Bridge



Bridge Seating



Raymarine VHF



Upgraded Electronics



New Speakers



Icemaker



Foredeck Entrance



Foredeck Entrance



Foredeck Entrance



Fordeck



Windlass



Foredeck Entrance



Foredeck



Foredeck Seating



Cockpit



Cockpit



Cockpit



Swim Platform



Flexi-Teak



Forward View



Port Profile



Port Forward Quarter



Port Aft Quarter



Stern



Starboard Aft Quarter



Starboard Forward Quarter



Starboard Profile



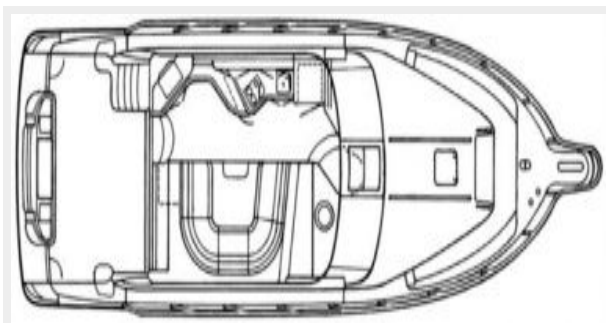
At Dock in Clearwater



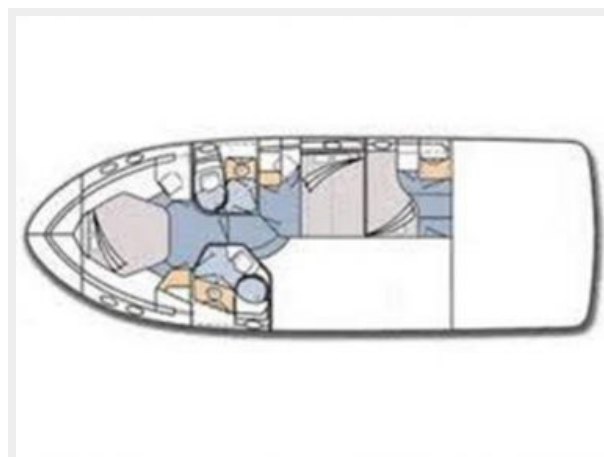
Running Shot



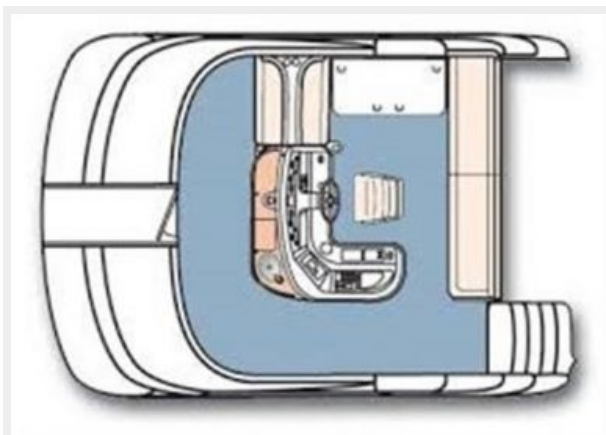
Salon Layout



Stateroom Layout



Walk Through Bridge Layout



360 View



360 View



360 View



360 View



360 View



360 View



360 View



360 View



КОНТАКТЫ

Андрей Шестаков (Andrey Shestakov) – ведущий яхтенный брокер отдела продаж яхт и судов компании Shestakov Yacht Sales Inc. Официальный представитель Shestakov Yacht Sales Inc. для русскоговорящих клиентов в центральном офисе компании в Майами/Форт Лодердейл/Флорида/США.

Контактная информация

Email: andrey@shestakovyachtsales.com

Web: shestakovyachtsales.com

Телефоны

Краснодарский край: **+7(918)465-66-44**

США, Майами, Флорида: **+1(954)274-4435**

Время работы

Понедельник – Суббота: **9:00 - 21:00**
EDT

Воскресенье: **Закрито**

Адрес



Harbour Towne Marina, 850 NE 3rd St,
STE 213, Dania, FL 33004