

STARS ALINE — LAGOON



Builder: LAGOON

Year Built: 2016

Model: Catamaran

Price: PRICE ON APPLICATION

Location: United States

LOA: 45' 11" (14.00m)

Beam: 25' 11" (7.90m)

Cruise Speed: 8 Kts. (9 MPH)

Max Speed: 9 Kts. (10 MPH)

Our experienced yacht broker, Andrey Shestakov, will help you choose and buy a yacht that best suits your needs **Stars Aline — LAGOON** from our catalogue. Presently, at Shestakov Yacht Sales Inc., we have a wide variety of yachts available on our sale's list. We also work in close contact with all the big yacht manufacturers from all over the world.

If you would like to buy a yacht **Stars Aline — LAGOON** or would like help answering any questions concerning purchasing, selling or chartering a yacht, please call **+1(954)274-4435**

TABLE OF CONTENTS

TABLE OF CONTENTS	2
SPECIFICATIONS	3
Basic Information	3
Dimensions	3
Speed, Capacities and Weight	3
Accommodations	3
Hull and Deck Information	3
Engine Information	3
DETAILED INFORMATION	4
Description	4
Features	4
Layout and Accommodations	5
Navigation and Electronics	5
Exclusions	6
Exclusions	6
Disclaimer	6
PHOTOS	7
CONTACTS	18
Contact details	18
Telephones	18
Office hours	18
Address	18

SPECIFICATIONS

Basic Information

Category: Catamaran

Model Year: 2016

Year Built: 2016

Country: United States

Dimensions

LOA: 45' 11" (14.00m)

Beam: 25' 11" (7.90m)

Clearance: 75' 11" (23.14m)

Speed, Capacities and Weight

Cruise Speed: 8 Kts. (9 MPH)

Max Speed: 9 Kts. (10 MPH)

Water Capacity: 46 Gallons

Fuel Capacity: 132 Gallons

Accommodations

Total Cabins: 3

Total Heads: 3

Hull and Deck Information

Hull Material: Fiberglass

Engine Information

Engines: 2

Manufacturer: Yanmar

Model: 4JH57

Engine Type: Inboard

Fuel Type: Diesel

DETAILED INFORMATION

Description

Stars Aline is an Immaculate & LOADED 3 Cabin owners layout 450F Lagoon. She has been privately owned since new, operated and maintained by a Lic. Captain since purchase, & Never chartered.

If you're looking for more than the barebones, & hard chartered cats on the market your search has ended. Regardless of budget buyers will circle back to Stars Aline as she is the nicest turn key option on the market.

- New "F" series galley/salon layout
- Optional oak interior wood with leather upholstery
- Hard-top bimini with Park Avenue boom
- Solar panels on cabin-top and bimini - 1,000 watt
- Total all electric winches on flybridge
- Upgraded 57HP Yanmar engines, folding props
- AB inflatable dinghy with 20HP electric-start Honda outboard

Features

- Cummins Generator
- Custom Park avenue boom
- Custom hardtop w/ enclosure and solar panels
- 1000w solar
- 6 Gel Battery 1350Wh each House Power Pack
- Teak decks in aft exterior cockpit
- Synthetic teak at helm
- New salon AC 2/19
- 12' tender w/ 20hp Honda Recently serviced
- New salon window exterior shades 2/19 by Admiral canvas
- New engine belts, raw water pumps 2/19
- New screecher headsail 3/19
- New Upgraded TVs w/ sound bars salon and master 3/19
- New Sea recovery aquamatic 700 water maker installed 3/19
- New Underwater lights 3/19
- New Bottom job 3/19
- New 6Pax Life raft 3/19

- New zincs 7/19
- Yanmar 4JH57 motors. 57hp

Layout and Accommodations

- New F-series (flybridge) model with improved galley and fwd cabin
- 3 cabins, 3 heads, each with separate shower
- Interior wood in Oak
- Hardtop bimini with enclosure for flybridge
- Comfort Equipment package Convertible double berth in main salon
- Special leather upholstery
- Curtains on salon door and aft window
- Mosquito screens in salon
- Additional leather stools in salon
- Additional freezer in main salon
- Built in microwave
- Cruisair 48,000 BTU air conditioning
- Fans in salon and cabins
- Storage unit in lieu of sofa in owners cabin

Navigation and Electronics

Electronics Refit / Boat took a power surge so various electronic equipment was recently replaced since 6/19:

- Full Rig inspection and hull inspection done 5/19
- New battery chargers
- New quick windlass chain counter
- New engine batteries-2
- New stern nav light
- New led deck light and steaming light
- New lagoon master electrical panel
- New Salon AC Board
- New relays on shower pumps
- New relay on companion way lights
- New Diode on propane selinoind switch
- New Yanmar ECUs
- New Yanmar throttle position sensor
- New Yanmar fuel rail psi sensor
- New led lighting replaced as needed.
- New house 12 volt to 110v Marinco inverter to be installed.
- Entire B&G Navionics suite in the process of being replaced. All antennas/ sensors and

cables in and on the mast will be replaced. All transducers, Auto pilot, radar and location/gps antennas replaced.

Exclusions

- Life vest
- Some small appliances
- Hurricane lines
- Ball fenders
- Owner's personal effects
- Spare parts

Exclusions

Owner's personal belongings.

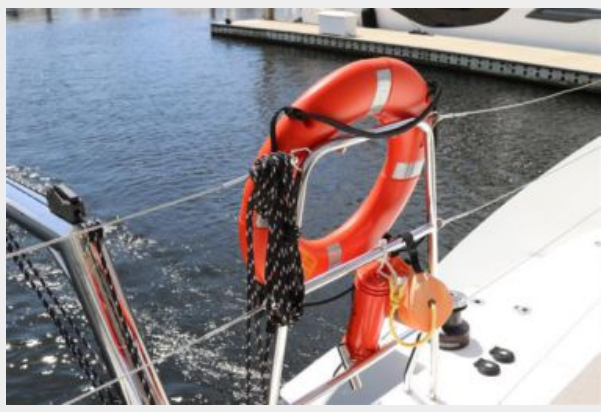
Disclaimer

The Company offers the details of this vessel or yacht in good faith but cannot guarantee or warrant the accuracy of this information nor warrant the condition of the vessel. A buyer should instruct his representatives, agents, or his surveyors, to investigate such details as the buyer desires validated. This vessel or yacht is offered subject to prior sale, price change, or withdrawal without notice.

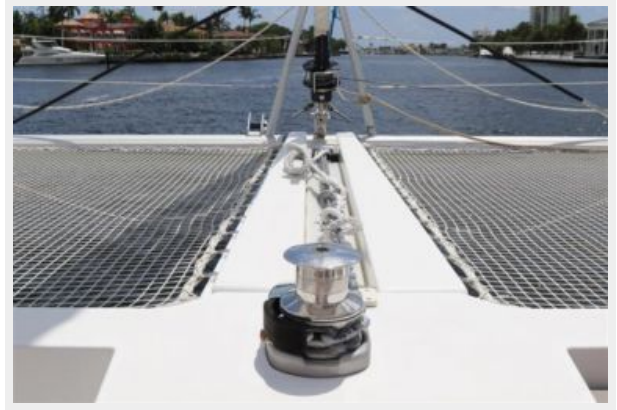
PHOTOS



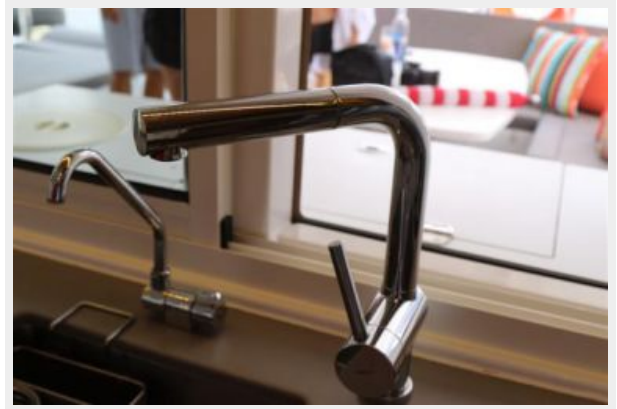




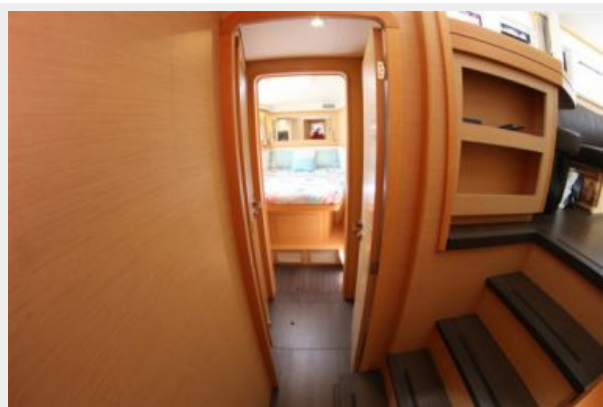
















CONTACTS

Andrey Shestakov, leading yacht broker of the sales department of Shestakov Yacht Sales Inc. Shestakov Yacht Sales Inc., the official representative of the Miami/Fort Lauderdale FL headquarters.

Contact details

Email: andrey@shestakovyachtsales.com

Web: shestakovyachtsales.com/en/

Telephones

USA: +1(954)274-4435

Office hours

Monday – Saturday: **9:00 - 21:00** EDT

Sunday: **closed**

Address



Harbour Towne Marina, 850 NE 3rd St,
STE 213, Dania, FL 33004