

## HATTERAS 71' — HATTERAS



**Builder:** HATTERAS

**Year Built:** 1989

**Model:** Motor Yacht

**Price:** PRICE ON APPLICATION

**Location:** Mexico

**LOA:** 70' (21.34m)

**Beam:** 18.16

**Max Draft:** 5' 6" (1.68m)

**Cruise Speed:** 17 Knots Kts. (20 MPH)

**Max Speed:** 20 Knots Kts. (23 MPH)

Our experienced yacht broker, Andrey Shestakov, will help you choose and buy a yacht that best suits your needs **Hatteras 71' — HATTERAS** from our catalogue. Presently, at Shestakov Yacht Sales Inc., we have a wide variety of yachts available on our sale's list. We also work in close contact with all the big yacht manufacturers from all over the world.

If you would like to buy a yacht **Hatteras 71' — HATTERAS** or would like help answering any questions concerning purchasing, selling or chartering a yacht, please call **+1(954)274-4435**

# TABLE OF CONTENTS

TABLE OF CONTENTS	2
SPECIFICATIONS	6
Overview	6
Basic Information	10
Dimensions	10
Speed, Capacities and Weight	10
Accommodations	10
Hull and Deck Information	10
Engine Information	11
PHOTOS	12
Hatteras 70' Cockpit_03 AziMx	12
Hatteras 70' Cockpit_04 AziMx	12
Hatteras 70' Cockpit_05 AziMx	12
Hatteras 70' Cockpit_06 AziMx	12
Hatteras 70' Cockpit_07 AziMx	12
Hatteras 70' Cockpit_08 AziMx	12
Hatteras 70' Cockpit_10 AziMx	13
Hatteras 70' Cockpit_09 AziMx	13
Hatteras 70' Cockpit_12 AziMx	13
Hatteras 70' Cockpit_11 AziMx	13
Hatteras 70' Cockpit_13 AziMx	14
Hatteras 70' Cockpit_14 AziMx	14
Hatteras 70' Cockpit_15 AziMx	14
Hatteras 70' Cockpit_16 AziMx	14
Hatteras 70' Cockpit_17 AziMx	14
Hatteras 70' Cockpit_18 AziMx	14
Hatteras 70' Cockpit_20 AziMx	15
Hatteras 70' Cockpit_19 AziMx	15

---

Hatteras 70' Cockpit_21 AziMx	15
Hatteras 70' Cockpit_22 AziMx	15
Hatteras 70' Cockpit_24 AziMx	16
Hatteras 70' Cockpit_23 AziMx	16
Hatteras 70' Cockpit_25 AziMx	16
Hatteras 70' Cockpit_25 AziMx	16
Hatteras 70' Cockpit_27 AziMx	16
Hatteras 70' Cockpit_28 AziMx	16
Hatteras 70' Cockpit_29 AziMx	17
Hatteras 70' Cockpit_30 AziMx	17
Hatteras 70' Cockpit_32 AziMx	17
Hatteras 70' Cockpit_31 AziMx	17
Hatteras 70' Cockpit_33 AziMx	18
Hatteras 70' Cockpit_34 AziMx	18
Hatteras 70' Cockpit_35 AziMx	18
Hatteras 70' Cockpit_36 AziMx	18
Hatteras 70' Cockpit_37 AziMx	18
Hatteras 70' Cockpit_38 AziMx	18
Hatteras 70' Cockpit_39 AziMx	19
Hatteras 70' Cockpit_40 AziMx	19
Hatteras 70' Cockpit_41 AziMx	19
Hatteras 70' Cockpit_42 AziMx	19
Hatteras 70' Cockpit_43 AziMx	19
Hatteras 70' Cockpit_44 AziMx	19
Hatteras 70' Cockpit_46 AziMx	20
Hatteras 70' Cockpit_45 AziMx	20
Hatteras 70' Cockpit_47 AziMx	20
Hatteras 70' Cockpit_48 AziMx	20
Hatteras 70' Cockpit_50 AziMx	21

---

---

Hatteras 70' Cockpit_51 AziMx	21
Hatteras 70' Cockpit_52 AziMx	21
Hatteras 70' Cockpit_53 AziMx	21
Hatteras 70' Cockpit_55 AziMx	22
Hatteras 70' Cockpit_54 AziMx	22
Hatteras 70' Cockpit_57 AziMx	22
Hatteras 70' Cockpit_56 AziMx	22
Hatteras 70' Cockpit_58 AziMx	23
Hatteras 70' Cockpit_59 AziMx	23
Hatteras 70' Cockpit_60 AziMx	23
Hatteras 70' Cockpit_61 AziMx	23
Hatteras 70' Cockpit_63 AziMx	24
Hatteras 70' Cockpit_62 AziMx	24
Hatteras 70' Cockpit_64 AziMx	24
Hatteras 70' Cockpit_65 AziMx	24
Hatteras 70' Cockpit_66 AziMx	25
Hatteras 70' Cockpit_67 AziMx	25
Hatteras 70' Cockpit_68 AziMx	25
Hatteras 70' Cockpit_69 AziMx	25
Hatteras 70' Cockpit_70 AziMx	25
Hatteras 70' Cockpit_71 AziMx	25
Hatteras 70' Cockpit_73 AziMx	26
Hatteras 70' Cockpit_72 AziMx	26
Hatteras 70' Cockpit_74 AziMx	26
Hatteras 70' Cockpit_75 AziMx	26
Hatteras 70' Cockpit_76 AziMx	27
Hatteras 70' Cockpit_77 AziMx	27
Hatteras 70' Cockpit_79 AziMx	27
Hatteras 70' Cockpit_78 AziMx	27

---

---

Hatteras 70' Cockpit_80 AziMx	28
Hatteras 70' Cockpit_81 AziMx	28
Hatteras 70' Cockpit_82 AziMx	28
CONTACTS	29
Contact details	29
Telephones	29
Office hours	29
Address	29

# SPECIFICATIONS

## Overview

**NEW TO MARKET**, this classic motoryacht is the perfect yacht for entertaining family and guests. She has spacious accommodations including 3 staterooms, 3 heads, a large flybridge and main salon. This 65' extended to 70' Hatteras design is powered by proven twin Detroit Diesels 8V-71TA, and stabilized for comfortable passages. With the 8V-71TA power plant standard with the 65' model, she has longer cruise range and more economic running than the original 70' models. She comes with a huge equipment list including a complete array of marine electronics, some of which is listed below. This fine yacht is awaiting a new owner to continue her cruising along Mexico's Gold Coast and beyond. **VESSEL WALK-THROUGH:**

This motoryacht was built as a 3 stateroom down layout. **MASTER STATEROOM;** is clear aft with these amenities;

- Centerline king size bed
- Entertainment center with TV, stereo
- Cedar lined closet
- Master head with Jacuzzi tub and shower
- Courtesy lighting
- Recessed overhead lighting
- Abundant storage
- Hanging Lockers, drawers, port side desk and office space
- Air Conditioning

Moving forward, the traditional port and starboard engine rooms separate the master from the, **PORT GUEST STATEROOM** with these amenities;

- Twin berths
- TV
- Chest of drawers, hanging locker ample storage
- Air Conditioning

**GUEST HEAD & SHOWER;** Opposite the port stateroom in aft companionway to starboard is the GUEST HEAD & SHOWER, linen storage locker and washer dryer. **GALLEY;** Moving forward and up steps the galley is located. To starboard is a dinette with television; to port is the oven and range, food preparation counter, stainless steel sink, dishwasher, trash compactor, full size refrigerator, appliances and ample storage for long voyages. In the floor of the galley is access to the generators and air conditioning units, tool storage. **FORWARD STATEROOM:** Moving forward and down steps is the Forward Stateroom with these amenities:

- Stacked berths with full berth upper and twin lower
- Private head
- Overhead storage compartments

- Drawers and hanging locker
- Television, stereo system and air conditioning

**GROUND TACKLE;**Clear forward ahead of Forward Stateroom is located the chain and rode locker and deck equipment storage.**MAIN SALON:**Up from Galley the Main Salon is located;

- Entertainment center (TV, Stereo System, DVD Player)
- 2 Swivel Chairs
- Valances with back lighting
- Color coordinated blinds
- Track Overhead lights
- glass deck boxes
- Port and Starboard side boarding gates
- U-shaped sofa
- Central Vacuum
- Air Conditioning
- Carpeted

**PILOTHOUSE:**The Pilothouse is located just forward of the Main Salon; 180 degree clear view from port to starboard; port and starboard doors to weather decks. Center wheel steering with 2 pilot seats just aft of wheel. AC distribution panels, air conditioning. Fresh water wipers on forward facing windows. Full array of engine controls and navigation electronics (listed below in Electronics)**AFT DECK AREAS:**Aft of the Main Salon is an enclosed full width Aft Deck Entertainment area with access To weather decks port and starboard; round table with 4 chairs; teak chair and end table; couch; full wet bar and ice maker, refrigerator.**MOORING COCKPIT:**Aft and down is located a mooring cockpit with electric mooring winch to starboard, access to water stabilizing compartments under deck, and access through transom door to swim step.**FLYBRIDGE:**The Flybridge, accessed by steps up from Pilothouse is huge with extended bimini. There is a davit and two cradles for inflatable dinghy and jet ski. The bridge also features an entertainment center and Magma propane grill, ample seating and lounge areas.**WEATHER DECKS**Port and Starboard Weather Decks extend from the Aft Deck Entertainment area access, clear forward to the bow area. Deck & Flybridge area equipment includes;

- Main anchor
- Storm anchor
- 300' combinations chain/line rode
- Windlass with deck controls and helm controls
- Freshwater wash-down
- ARC searchlight
- Air horns
- 2 Fiber

**GENERAL EQUIPMENT LIST:**Cruisair Air Conditioners throughoutStabilizedBow ThrusterTelevisions, DVD's, Stereo systems in Salon, Stateroom's, Galley and Flybridge deckDISH Sat TV system**ELECTRONICS - FLYBRIDGE**

- 2 8" Ritchie compasses
- B&G HS 921 LCD Hydra Display
- Ships System Monitoring (Bilge and Engine Performance Alarms)
- Bennett TrimTab Controls
- Robertson AP200DL Auto Pilot
- Full Engine Control, start stop, readout gauges and controls; emergency shut downs.
- Engine Throttle & Transmission Controls (lead and slave)
- Standard Horizon VHF Matrix GX2000

## ELECTRONICS - PILOTHOUSE

- Furuno GPS / WASS Navigator GP-32
- Northstar 952X GPS
- Ships System Monitoring (Bilge and engine performance alarms)
- Bennett Trim Tabs
- Robertson AP200DL Auto Pilot
- FloScan Eng hr, GPH, Fuel Consumption monitors
- B&G HS 921 LCD Hydra Display
- SeaTel TV-At Sea Antenna Control System
- Xantrex Prosine Inverter / Charger
- Furuno 36 Mile Radar
- Full Engine Control, start stop, and Read out Systems gauges and controls; emergency shut downs
- Standard Horizon VHF Quantum GX2360S
- Standard Horizon Loud Hailer VLH-3000
- Stephens 222 SSB
- Fuel Priming Pump controls
- Engine Throttle and Transmission Controls (lead and slave)
- Wesmar Bow Thruster
- NAIAD stabilizers
- Sea Recovery Watermaker
- 2 X Handheld ICOM Radios
- 2 8" Ritchie compasses

**ENGINES:** Engine Starboard; Engine Brand: Detroit Diesel Engine Model: 12V 71TA Engine Type: Inboard Engine/Fuel Type: Diesel Engine Hours: 1992 Drive Type: Direct Drive Engine Power: 870 HP Engine Port: Engine Brand: Detroit Diesel Engine Model: 12V 71TA Engine Type: Inboard Engine/Fuel Type: Diesel Location: Starboard Engine Hours: 1983 Drive Type: Direct Drive Engine Power: 870 HP Cruising Speed: 17 knots Maximum Speed: 20 knots

## MECHANICAL DETAILS:

- Walker air seps
- Engine synchronizers
- Racor fuel filters
- Oil change system



- 75 Amp main engine alternators
- Automatic and manual CO2 fire suppression system
- 2 bilge blowers
- 7 Automatic and manual bilge pumps
- Electric fuel priming pumps with fuel transfer system

### **ELECTRICAL:**

- 2 X 20kw Onan generators - hours 4031 / 3767hours
- 12V & 24V DC Service; 110, 220 AC Service
- 2 Voltage boosters
- 24V DC/220V AC service
- 4 8D main batteries w/parallel switch
- 2 additional batteries for 300 watt inverter with charger
- Mastervolt Automatic and manual battery chargers 20 amp and 40 amp
- 50 amp dockside electrical cable with P&S inlets
- 6 Cruisair AC units with service throughout ship
- 7 Ships Bilge Pumps on Auto-Floats

### **Mechanical Disclaimer**

\*Engine hours are as of the date of the original listing and are a representation of what the listing broker is told by the owner and/or actual reading of the engine hour meters. The broker cannot guarantee the true hours. It is the responsibility of the purchaser and/or his agent to verify engine hours, warranties implied or otherwise and major overhauls as well as all other representations noted on the listing brochure.

### **Disclaimer**

The company offers the details of this vessel in good faith but cannot guarantee or warrant the accuracy of this information nor warrant the condition of the vessel. A buyer should instruct his agents, or his surveyors, to investigate such details as the buyer desires validated. This vessel is offered subject to prior sale, price change or withdrawal without notice.

---

## Basic Information

---

**Category:** Motor Yacht

**Sub Category:** Flybridge

**Model Year:** 1989

**Year Built:** 1989

**Country:** Mexico

---

## Dimensions

---

**LOA:** 70' (21.34mm)

**Beam:** 18.16

**Max Draft:** 5' 6" (1.68mm)

---

## Speed, Capacities and Weight

---

**Cruise Speed:** 17 Knots Kts. (20 MPH)

**Max Speed:** 20 Knots Kts. (23 MPH)

**Water Capacity:** 350 Gallons

**Holding Tank:** 230 Gal Gallons

**Fuel Capacity:** 1170 Gal Gallons

---

## Accommodations

---

**Total Cabins:** 3

**Total Berths:** 5

**Sleeps:** 8

**Total Heads:** 3

---

## Hull and Deck Information

---

**Hull Material:** Fiberglass

**Hull Configuration:** Semi-Displacement

**Hull Color:** White

---

## Engine Information

---

**Engines:** 2

**Manufacturer:** Detroit Diesel

**Engine Type:** Inboard

**Fuel Type:** Diesel

# PHOTOS

**Hatteras 70' Cockpit\_03 AziMx**



**Hatteras 70' Cockpit\_04 AziMx**



**Hatteras 70' Cockpit\_05 AziMx**



**Hatteras 70' Cockpit\_06 AziMx**



**Hatteras 70' Cockpit\_07 AziMx**



**Hatteras 70' Cockpit\_08 AziMx**



Hatteras 70' Cockpit\_09 AziMx



Hatteras 70' Cockpit\_10 AziMx



Hatteras 70' Cockpit\_11 AziMx



Hatteras 70' Cockpit\_12 AziMx



**Hatteras 70' Cockpit\_13 AziMx**



**Hatteras 70' Cockpit\_14 AziMx**



**Hatteras 70' Cockpit\_15 AziMx**



**Hatteras 70' Cockpit\_16 AziMx**



**Hatteras 70' Cockpit\_17 AziMx**



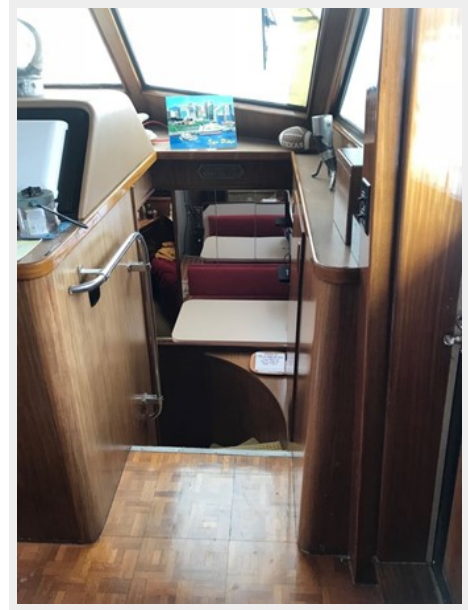
**Hatteras 70' Cockpit\_18 AziMx**



Hatteras 70' Cockpit\_19 AziMx



Hatteras 70' Cockpit\_20 AziMx



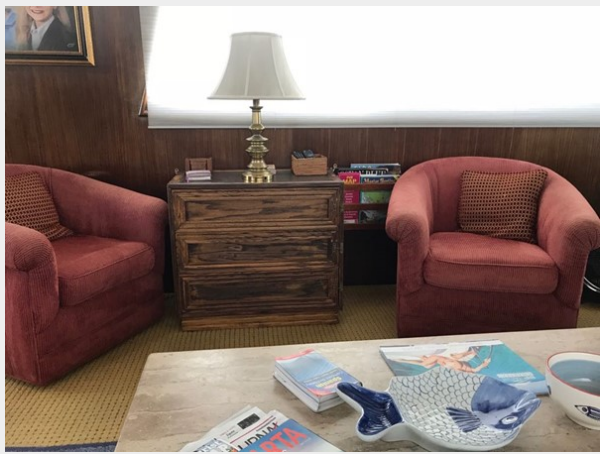
Hatteras 70' Cockpit\_21 AziMx



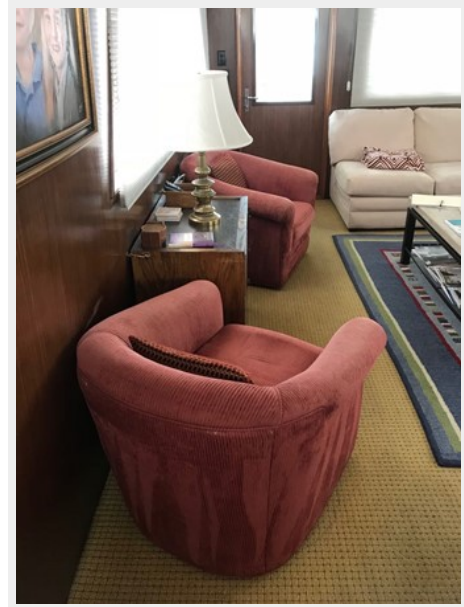
Hatteras 70' Cockpit\_22 AziMx



Hatteras 70' Cockpit\_23 AziMx



Hatteras 70' Cockpit\_24 AziMx



Hatteras 70' Cockpit\_25 AziMx



Hatteras 70' Cockpit\_25 AziMx



Hatteras 70' Cockpit\_27 AziMx



Hatteras 70' Cockpit\_28 AziMx





**Hatteras 70' Cockpit\_29 AziMx**



**Hatteras 70' Cockpit\_30 AziMx**



**Hatteras 70' Cockpit\_32 AziMx**



**Hatteras 70' Cockpit\_31 AziMx**



Hatteras 70' Cockpit\_33 AziMx



Hatteras 70' Cockpit\_34 AziMx



Hatteras 70' Cockpit\_35 AziMx



Hatteras 70' Cockpit\_36 AziMx



Hatteras 70' Cockpit\_37 AziMx



Hatteras 70' Cockpit\_38 AziMx



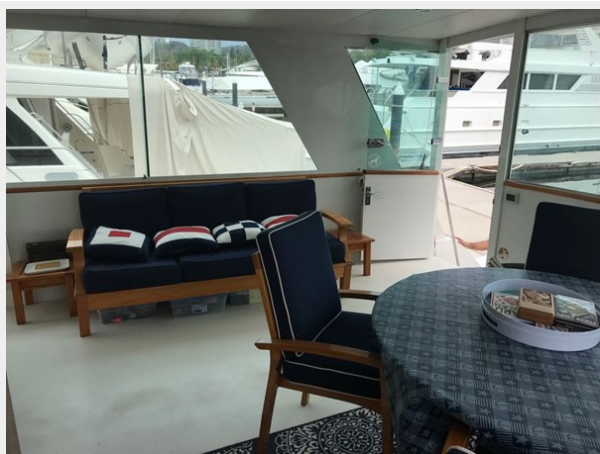
**Hatteras 70' Cockpit\_39 AziMx**



**Hatteras 70' Cockpit\_40 AziMx**



**Hatteras 70' Cockpit\_41 AziMx**



**Hatteras 70' Cockpit\_42 AziMx**



**Hatteras 70' Cockpit\_43 AziMx**



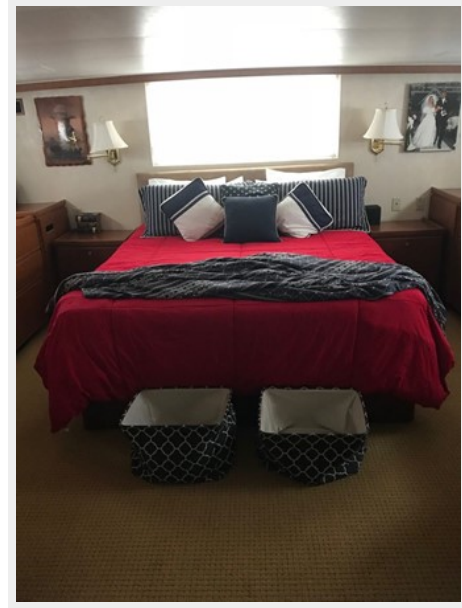
**Hatteras 70' Cockpit\_44 AziMx**



Hatteras 70' Cockpit\_45 AziMx



Hatteras 70' Cockpit\_46 AziMx



Hatteras 70' Cockpit\_47 AziMx



Hatteras 70' Cockpit\_48 AziMx



Hatteras 70' Cockpit\_50 AziMx



Hatteras 70' Cockpit\_51 AziMx



Hatteras 70' Cockpit\_52 AziMx



Hatteras 70' Cockpit\_53 AziMx



Hatteras 70' Cockpit\_54 AziMx



Hatteras 70' Cockpit\_55 AziMx



Hatteras 70' Cockpit\_56 AziMx



Hatteras 70' Cockpit\_57 AziMx



### Hatteras 70' Cockpit\_58 AziMx



### Hatteras 70' Cockpit\_59 AziMx



### Hatteras 70' Cockpit\_60 AziMx



### Hatteras 70' Cockpit\_61 AziMx



Hatteras 70' Cockpit\_62 AziMx



Hatteras 70' Cockpit\_63 AziMx



Hatteras 70' Cockpit\_64 AziMx



Hatteras 70' Cockpit\_65 AziMx





Hatteras 70' Cockpit\_66 AziMx



Hatteras 70' Cockpit\_67 AziMx



Hatteras 70' Cockpit\_68 AziMx



Hatteras 70' Cockpit\_69 AziMx



Hatteras 70' Cockpit\_70 AziMx



Hatteras 70' Cockpit\_71 AziMx



Hatteras 70' Cockpit\_72 AziMx



Hatteras 70' Cockpit\_73 AziMx



Hatteras 70' Cockpit\_74 AziMx



Hatteras 70' Cockpit\_75 AziMx



Hatteras 70' Cockpit\_76 AziMx



Hatteras 70' Cockpit\_77 AziMx



Hatteras 70' Cockpit\_78 AziMx



Hatteras 70' Cockpit\_79 AziMx



Hatteras 70' Cockpit\_80 AziMx



Hatteras 70' Cockpit\_81 AziMx



Hatteras 70' Cockpit\_82 AziMx



# CONTACTS

---

Andrey Shestakov, leading yacht broker of the sales department of Shestakov Yacht Sales Inc. Shestakov Yacht Sales Inc., the official representative of the Miami/Fort Lauderdale FL headquarters.

## Contact details

---

Email: [andrey@shestakovyachtsales.com](mailto:andrey@shestakovyachtsales.com)

Web: [shestakovyachtsales.com/en/](http://shestakovyachtsales.com/en/)

## Telephones

---

USA: +1(954)274-4435

## Office hours

---

Monday – Saturday: **9:00 - 21:00** EDT

Sunday: **closed**

## Address

---



Harbour Towne Marina, 850 NE 3rd St,  
STE 213, Dania, FL 33004