

LET IT BE — HEESEN YACHTS



Судостроитель: HEESEN YACHTS

Год постройки: 2007

Модель: Моторная яхта

Цена: **ЦЕНА ЯХТЫ ПО ЗАПРОСУ**

Местонахождение: Italy

Длина общая: 156' 6" (47.7mm)

Ширина: 28.96

Макс. осадка: 8' 1" (2.45mm)

Крейс. скорость: 14 Knots Kts. (16 MPH)

Макс. скорость: 16 Knots Kts. (18 MPH)

Купить **LET IT BE — HEESEN YACHTS** а также выбрать подходящую вам яхту из нашего каталога яхт вам поможет опытный яхтенный брокер Андрей Шестаков. На сегодняшний день компания **Shestakov Yacht Sales Inc.** имеет большое количество яхт в собственном списке продаж, а также тесно сотрудничает со всеми крупными яхтенными производителями по всему миру.

Для того чтобы купить яхту **LET IT BE — HEESEN YACHTS** а также проконсультироваться по любому вопросу связанному с покупкой, продажей, чартером яхт позвоните по телефону **+7(918)465-66-44**.

ОГЛАВЛЕНИЕ

ОГЛАВЛЕНИЕ	2
ХАРАКТЕРИСТИКИ	3
Обзор	3
Основная информация	20
Размеры	21
Скорость, вместимость и масса	21
Размещение	21
Корпус и палуба	21
Информация о двигателе	21
ФОТОГРАФИИ	22
КОНТАКТЫ	28
Контактная информация	28
Телефоны	28
Время работы	28
Адрес	28

ХАРАКТЕРИСТИКИ

Обзор

SPECIFICATION

TYPE	Twin Screw Diesel Yacht	
FLAG	Cayman Islands	
DIMENSIONS	Length O.A. 47.70m	
	Length W.L. 40.60m	
	Beam	8.83m
	Draft	2.45m
TONNAGE	Gross	495
	Net	148
	Displacement (1/2 load) 278	
YEAR BUILT	2007	
BUILDER & NAVAL	Heesen Yachts	
ARCHITECT		
STYLING	Omega Architects	

INTERIOR DESIGNER

Omega Architects

CONSTRUCTION

Welded Steel Hull

Aluminium Superstructure

Teak Laid Decks

CLASSIFICATION

Lloyds + 100A1 SSC YACHT MONO G6 LMC

MACHINERY

MAIN ENGINES

2 x 1,550 hp MTU type 8V 4000 M70

GEAR BOXES

2 x 5.040:1 ZF 4661

SHAFTS & PROPELLERS

2 x fixed pitch, 5 bladed bronze propellers

Stainless steel propeller shafts

SPEEDS & FUEL

CONSUMPTIONS

Cruising speed about 14 knots (1500 rpm)

Maximum speed about 16 knots

RANGE

3,500 n. miles approx at economical speed

AUXILIARY MACHINERY & ELECTRICAL SYSTEM

GENERATORS

2 x 100 kw Kilopack

ELECTRICITY

400/230v AC 3 phase 50 Hz 4 wire with neutral earth

230v AC single phase 50Hz

24v DC

SHORE POWER

415/400/380v AC 3 phase 50 Hz

135 Amps

TANK CAPACITIES (approximate)

FUEL 63,000 litres

WATER 10,250 litres

WATERMAKERS 2 x Idromar watermakers producing about 250 litres per hour each

LUB OIL 651 litres

DIRTY LUB OIL 1,245 litres

GREY WATER 3,181 litres

BLACK WATER 1,870 litres

POOL 11,000 litres

BALLAST 18,000 litres

ANCILLARY EQUIPMENT

STEERING SYSTEM Sperry steering gear
2 rudders
Emergency steering position aft

RUDDER ANGLE INDICATOR Sperry Marine rudder angle indicator

BOW THRUSTER Rexroth (hydraulic)

STABILIZERS Najad Zero speed stabilisers (hydraulic) 140 bar pressure

FUEL OIL SEPERATOR 1 x Westfalia fuel oil separator

OIL/WATER SEPARATOR 15 ppm oil content alarm

FIRE/BILGE PUMP 2 x fire/bilge pumps

BOILERS 2 x electric heaters/boilers 200 litres each

SEWAGE TREATMENT Hamann

WC's 14 x Evac vacuum toilets
7 x bidets

AIRCONDITIONING HEINEN & HOPMAN All ambients – 2 compressors

VENTILATION 2 x flow fan, 2-speed, reversible for engine room
Exhaust fans sanitary spaces
Supply of exhaust fans for technical spaces

SAFETY & SECURITY EQUIPMENT

SAFETY 2 x hydraulic sliding watertight doors
9 x Immersion suits
1 x Telemar SART

1 x Unideck EPIRB

2 x 16 men inflatable liferafts 1 x 12 men liferaft

12 x Lifebuoys (incl. 2 with lifelines, 2 with lights attached, 2 with Smoke/Light) + 9 crew

1 x Air Horn with Automatic Signal Control

FIRE FIGHTING

Engine Room Fixed automatic CO2 installation

Hi-fog sprinkler system throughout

35 x Portable Fire Extinguishers

**SECURITY
Galley**

CCTV screen in Bridge, Control room, Crew quarter and

Alarms on external doors

COMMUNICATION EQUIPMENT**SATCOM**

1 x Seatel 4003 VSAT

1 x Nera Inmarsat F77

1 x Sailor Inmarsat C transceiver

1 x Navtex Printer (for telex and e-mail) type H 1252B

1 x satellite telephone

CELLULAR SYSTEM 1 x with 2 routers

VHF RADIOTELEPHONES 2 x Sailor VHF radiotelephones type RT 5022
3 x Simrad RS 87

SSB RADIOTELEPHONE 1 x Sailor MF/HF SSB radiotelephone

TELEPHONE Panasonic telephones

INTERCOM SYSTEM Intercom System with various stations

Stewardess call system

NAVIGATION EQUIPMENT

MAGNETIC COMPASS 1 x Horizon 135

GYRO COMPASS 1 x Sperry Marine (2018)

AUTOMATIC PILOT 1 x Sperry Navipilot 4000

LOG 1 x speed and distance log

ECHO SOUNDER
display and 2 transducers

1 x Furuno echo sounder type FCV 582L with graphic

1 x B&G Hydra 2000 multifunction

RADAR

2 x Furuno radar type FCV 1200

CHART PLOTTER

1 x ECDIS

GPS

Simrad GN 33 IMO approved

WEATHER FAX

1 x Navtex receiver Furuno NX 700

NAVTEX

1 x ICS-NAV5 Navtex Receiver

WIND INSTRUMENTS

1 x B&G Hydra 2000 multifunction

OTHER

AIS Simrad

DECK EQUIPMENT

ANCHOR WINDLASS

2 x Staalart

AFT WARPING CAPSTANS	2 x Staalart
GROUND TACKLE	Anchors - 2 x Pool (315 kg) bow anchors Chains - 4 shackles 110 mt
BOAT CRANE & DAVITS	1 x carbon boat crane for rescue tender
PASSERELLE	Hydromar hydraulic (retractable) passerelle
SWIMMING PLATFORM	swimming platform (garage door) with shower
SEARCHLIGHT	1 x ACR Electronics
AWNING	Removeable awning on sundeck
POOL	7,000 litres pool on main deck

AUDIO/VISUAL ENTERTAINMENT SYSTEMS

Flat screen televisions in all guest areas with an Audio and Video on demand system

Outside cinema on main deck fwd

OFFICE EQUIPMENT

FACSIMILE 1 x Inmarsat C A4 printer

DOMESTIC EQUIPMENT

MAIN GALLEY & PANTRY 2 x Foster Fridges
2 x Foster freezers
1 x Gaggenau oven
1 x Gaggenau steam oven
1 x Gaggenau microwave oven
1 x Siemens induction hob (2018)
1 x Miele grill
1 x Icemaker
2 x Miele dishwashers
1 x trash compactor
1 x Fryer

1 x Lodige dumbwaiter

1 x Ice maker

LAUNDRY & CREW MESS

2 x Miele washing machine

2 x Miele drying machine

1 x Iron

1 x Ironing mangle

1 x Gaggenau microwave

1 x Fridge

OTHER EQUIPMENT

GARAGE

2 x Liebherr fridges

1 x drying machine

SUNDECK

1 x Liebherr fridge

1 x Ice maker

1 x grill and BBQ

1 x stainless steel sink

BOSUN LOCKER

1 x Liebherr fridge

MAIN DECK BAR
1 x Liebherr fridge
1 x Wine cooler in saloon

UPPER DECK
1 x Ice maker

OTHER EQUIPMENT

JACUZZI DIP POOL
On Sundeck

BARBEQUE
furniture
1 x gas fired barbecues (on sundeck) built into custom made

TENDERS & WATERSPORTS EQUIPMENT

TENDERS
1 x Novourania 630 with in/out board engine

1 x Tender Williams rescue

OTHER

1 x Seadoo RED GPRX 280 JETSKI

1 x Seadoo YELLOW WAKE 125 JETSKI + wakeboard support

WATERSPORTS

1 x kneesboard

EQUIPMENT

2 x kayaks

1 x wakeboard

ACCOMMODATION

OWNER

1 x Double Owner's Cabin with double bathroom and shower in common, 2 dressing rooms, lounge area and office area en suite

GUESTS

2 x Double VIP Cabins full beam with bathrooms, one with wardrobe and the other with shower and bathtub.

2 x Double Cabins with shower rooms en suite.

1 x VIP double Cabin on the upper deck level with shower room en suite

CREW Captain's Double Cabin with shower room en suite
4 x Twin Cabins, 2 with shower rooms en suite and 2 with
bathroom in common

REMARKS

The ship, built and launched in Holland in 2007 by the Heesen Shipyard, was subjected to "Several refit" during the winter season 2016/2017 at 7Stars Shipyard in Pisa. The main refit works that affected the ship concerned the modification of the superstructure in the proximity of the main deck, where a large open deck of over 60 square meters was built, with a spacious structural couch and a removable structure, with Vertical carbon poles, which supports both a large shading towel and a screen for outdoor movie projection. This area can accommodate over 30 people comfortably. In the aft deck of the main deck, a large swimming pool with steel structure and tempered crystals has been designed and constructed, with a capacity of over 7,000 liters of fresh water, with waterfall from the top of the bridge, illuminated by RGB lights, With dedicated system for circulation, filtration, sanitation and water heating. Both major modifications, which also affected the structural parts of the ship, were carried out under the supervision and approval of the Lloyd Register. Continuing on the list of major refit works, a similarly important item is the total re-painting of the ship, as well as the revision of all onboard systems, shafts line control, rudders, structural tanks, hull thicknesses, valves and seals, for the renewal and maintenance of class requirements of the Lloyd register, as foreseen by the decennial inspection of the Registry itself. The sand blasting with the application of a complete antifouling and primer International cycle, dismantling and zero-hour revision of the stabilization system, the revision of engines and generators, finally brought the vessel under full efficiency and full usability. Other complementary works, such as the transformation of the upper deck with

the elimination of a structural sofa and the consequent rebuilding of the deck, the re-equipment of the fly bridge with the supply and installation of a new Jacuzzi tub, a new cabinet equipped with grill, sink and refrigerator, the supply of two new external TVs with its lower lifting mechanisms, the replacement of the exterior lights of all the bridges with the adoption of new LED spotlights change color, the remodeling of all external tapestries and the teak of the bridges, the modification of the exterior tables, the adoption of retro marbles on exterior furniture, have contributed to "rejuvenating and modernizing" both the appearance and use of the ship, replacing it in the field of modern luxury yachts. Particular attention was also given to the control and revision of all indoor installations, both in terms of entertainment systems and navigation and communication equipment, as well as the air conditioning / air treatment system, refrigerators, kitchen equipment, lighting Inside, etc.

At the equipment level, the main tender was completely revised, provided a new rescue tender with a new carbon crane, checked and revised all safety equipment, including inflatable rafts, epiirbs, life jackets, insoles, respirators etc.

As foreseen by Lloyd, a new stability test has been carried out and all systems have been tested, carried out the navigation tests, even in the presence of the Flag Representative, all with a positive result, with the consequent release of the new certificates.

LIST OF THE MAIN INTERVENTIONS AND MODIFICATIONS EXERCISED:

- total yacht repainting
- all the work required to maintain the Lloyd class requirements, a ten-year inspection
- disassembly and revision of the propeller shaft and bushings,
- dismounting and revision rudders
- disassembly and balancing of propellers
- disassembly and revision of valves and seals
- review of sewage treatment plant
- pumps review and toilet facilities
- revision of pumps and bilge exhaust system

- revision of freshwater plant with autoclave replacement
- full revision stabilizer
- tanks inspection and control
- fire extinguishing system review
- engine revision
- generators revision
- realization of crystal and stainless-steel swimming pool on the main deck with cascade from ceiling
- cutting and modifying the bow superstructure on the main deck to create a new cinema area
- supply and installation new Jacuzzi on the fly
- rebuilding teak bridges
- supply and installation of new RGB external lights
- supplying new rescue tender and new crane dedicated to the bow
- air conditioning compressor plant review,
- desalination review
- garage renovation
- refurbishing kitchen flooring
- Replacement carpet cabins
- modify external tables
- change mobile grill on fly
- supply and installation of two new "custom made" tables of crystal and stainless-steel service on fly and main deck
- kitchen replacement oven
- dismantling and replacing aft door tailgate components
- stern gangway revision
- replacement hydraulic steering pumps

- fan coil control and sanitation
- general interior lights control
- satellite antennas control
- testing of radio equipment
- check hull thickness
- hull blasting and International full cycle application
- replacing internal TVs
- supply of two new external TVs with lower lift mechanism
- supply and installation of backlit marble on top deck furniture
- removing the structural sofa on the upper deck
- removing external tapestries and hoods
- supply and installation of carbon frame for cinema and awning new bow area on main deck
- control and maintenance of all safety equipment
- replacement of all hydrostatic hooks
- full review of main tender

Specification are provided for informational purposes only. Data was obtained from sources believed reliable but is not guaranteed by owner or brokers. Buyer assumes responsibility to verify all speeds, capacities consumption and other measurements contained herein and otherwise provided and agrees to instruct his agents to confirm such details prior to purchase. Vessel subject to prior sale, price and inventory changes and withdrawal from market without notice.

Основная информация

Тип судна: Моторная яхта

Модельный год: 2007

Год постройки: 2007

Страна: Italy

Размеры

Длина общая: 156' 6" (47.7mm)

Длина по ватерлинии: 133' 3" (40.6mm)

Ширина: 28.96

Макс. осадка: 8' 1" (2.45mm)

Скорость, вместимость и масса

Крейс. скорость: 14 Knots Kts. (16 MPH)

Макс. скорость: 16 Knots Kts. (18 MPH)

Чистый вес: 495 Pounds

Вместимость воды: 10250 Gallons

Объем топливного бака: 16642.84 Gal
Gallons

Размещение

Всего кают: 6

Всего коек: 6

Спальные места: 12

Всего ком. состава: 6

Каюты экипажа: 9

Койки экипажа: 9

Комм. состав экипажа: 4

Корпус и палуба

Материал корпуса: Steel

Дизайнер экстерьера: OMEGA
ARCHITECTS

Дизайнер интерьера: OMEGA
ARCHITECTS

Информация о двигателе

Двигатели: 2

Производитель: MTU

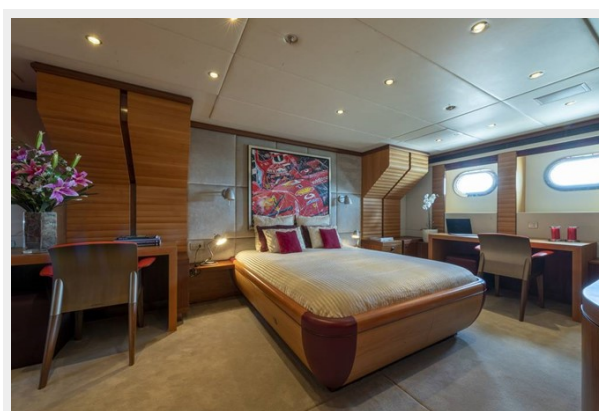
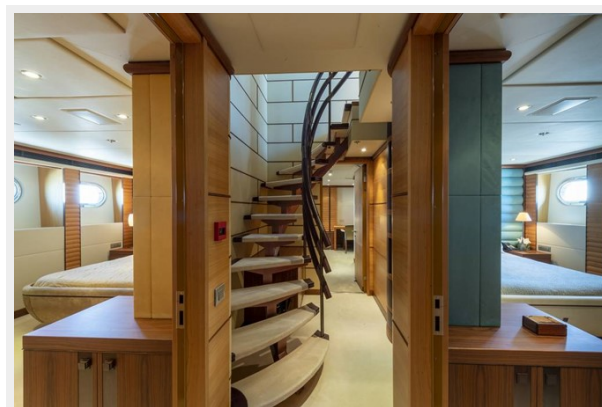
Тип двигателя: Inboard

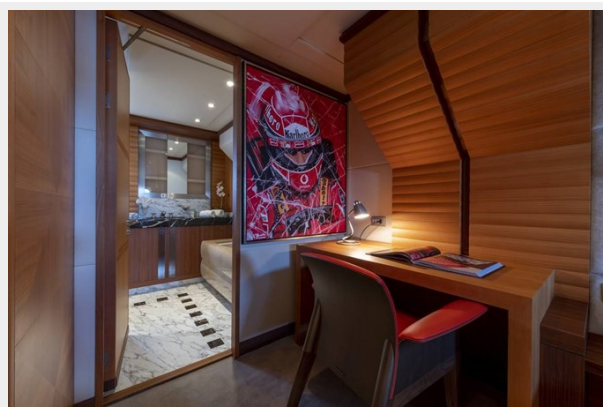
Тип топлива: Diesel

ФОТОГРАФИИ













КОНТАКТЫ

Андрей Шестаков (Andrey Shestakov) – ведущий яхтенный брокер отдела продаж яхт и судов компании Shestakov Yacht Sales Inc. Официальный представитель Shestakov Yacht Sales Inc. для русскоговорящих клиентов в центральном офисе компании в Майами/Форт Лодердейл/Флорида/США.

Контактная информация

Email: andrey@shestakovyachtsales.com

Web: shestakovyachtsales.com

Телефоны

Краснодарский край: **+7(918)465-66-44**

США, Майами, Флорида: **+1(954)274-4435**

Время работы

Понедельник – Суббота: **9:00 - 21:00**
EDT

Воскресенье: **Закрыто**

Адрес



Harbour Towne Marina, 850 NE 3rd St,
STE 213, Dania, FL 33004