

CHUBBY — LIBERTY YACHTS



Builder: LIBERTY YACHTS

Year Built: 1995

Model: Sport Fisherman

Price: PRICE ON APPLICATION

Location: United States

LOA: 42' (12.8mm)

Beam: 14.58

Cruise Speed: 28 Knots Kts. (32 MPH)

Max Speed: 34 Knots Kts. (39 MPH)

Our experienced yacht broker, Andrey Shestakov, will help you choose and buy a yacht that best suits your needs **CHUBBY — LIBERTY YACHTS** from our catalogue. Presently, at Shestakov Yacht Sales Inc., we have a wide variety of yachts available on our sale's list. We also work in close contact with all the big yacht manufacturers from all over the world.

If you would like to buy a yacht **CHUBBY — LIBERTY YACHTS** or would like help answering any questions concerning purchasing, selling or chartering a yacht, please call **+1(954)274-4435**

TABLE OF CONTENTS

TABLE OF CONTENTS	2
SPECIFICATIONS	5
Overview	5
Basic Information	6
Dimensions	6
Speed, Capacities and Weight	6
Hull and Deck Information	6
Engine Information	6
PHOTOS	7
IMG_1685	7
IMG_0680	7
IMG_0090	7
IMG_1686	7
IMG_0033	8
image9	8
image4	8
IMG_0772	8
IMG_0657	8
image3	8
IMG_0773	9
image5	9
IMG_0776	9
image8	9
image7	9
image1 (1)	9
image6	10
image2	10
IMG_8644	10

DSC_0342	10
DSC_0302	11
DSC_0300	11
DSC_0311	11
DSC_0310	11
image6 copy	12
image1 (1) copy	12
DSC_0355	12
image3 copy	12
image2 copy	13
DSC_0361	13
IMG_0841	13
IMG_0817	13
image4 copy	14
DSC_0357	14
IMG_0809	14
IMG_0811	14
IMG_0818	15
image5 copy	15
IMG_0821	15
IMG_0825	15
IMG_0827	15
IMG_0829	15
IMG_0835	16
IMG_0837	16
IMG_0842	16
IMG_0822	16
IMG_0882	17
IMG_0884	17

IMG_0848	17
IMG_0809	17
IMG_0805	17
CONTACTS	18
Contact details	18
Telephones	18
Office hours	18
Address	18

SPECIFICATIONS

Overview

MAJOR REFIT 2017! OWNER HAS NEW BOAT COMING OUT OF THE SHOP AND THIS ONE NEEDS TO GO. \$26K PRICE REDUCTION AND MOTIVATED SELLER. COME AND GET HER...

YOU CAN NOT FIND A BETTER BOAT IN THIS CLASS FOR THE MONEY....The Liberty Yachts 42 design is the product of an original Blackfin client who desired the lines, ride and seaworthiness of the Blackfin 32 in a bigger and beamier package. CHUBBY is a beautiful example of the thought and craftsmanship that emerged from this idea. Built in 1995, she has been constructed, laid out, powered and outfitted in a very well thought out manner. There is no encapsulated wood anywhere in this boat. None. There will never be an issue with rot or soft spots. The centerline of the hull bottom is a laminated 20 layers of solid fiberglass. The hull, sides and transom are airex core sandwiched by 3/4 oz. mat and many layers of fiberglass. The hull bottom also has layers of kevlar mat within the laminate. The decks and cabin are built of core cell sandwiched by layers of fiberglass. The result is a very sturdy and rigid platform that is super light relative to its strength. An equal amount of thought was also given to her power selection, as she is propelled by a pair of MAN 2848LE 401 commercially rated engines. These are beefy V-8 motors that are generating only 510 hp per side. Like the strength to weight ratio in the hull, these motors are derated to produce less horsepower relative to their volume. They were selected for their dependability and the fact that in this application, they should 'last forever'...Many in the industry consider these to be 15K-20K hr. motors and they shove the CHUBBY along easily at a 28 kt. cruise with a top speed of 34 kts. The list goes on and on in regard to the nature of how this boat was fitted out. The steering, the filtration, the air system, the thru-hull fittings, the electrical system, the weight distribution, the layout, the chair selection, the ease of maintenance...With new paint, generator, batteries, charger, helm console, bridge enclosure, deck hardware, electronics, refurbished teak.....She's ready to roll. If you understand the process of building and maintaining a boat, you will especially appreciate this one. Take the time to come to NC and look the CHUBBY over. She's an impressive vessel and will make the next owner very happy for many years to come.

Jeff James (252) 216 6913

Basic Information

Category: Sport Fisherman

Model Year: 1995

Year Built: 1995

Country: United States

Dimensions

LOA: 42' (12.8mm)

Beam: 14.58

Speed, Capacities and Weight

Cruise Speed: 28 Knots Kts. (32 MPH)

Max Speed: 34 Knots Kts. (39 MPH)

Water Capacity: 125 Gallons

Fuel Capacity: 585 Gal Gallons

Fuel Consumption: 36 Gal Gallons

Hull and Deck Information

Hull Material: Fiberglass

Engine Information

Engines: 2

Manufacturer: MAN

Engine Type: Inboard

Fuel Type: Diesel

PHOTOS

IMG_1685



IMG_0680



IMG_0090



IMG_1686



IMG_0033



image9



image4



IMG_0772



IMG_0657



image3



IMG_0773



image5



IMG_0776



image8



image7



image1 (1)



image2



image6



IMG_8644



DSC_0342



DSC_0300



DSC_0302



DSC_0311



DSC_0310



image6 copy



image1 (1) copy



DSC_0355

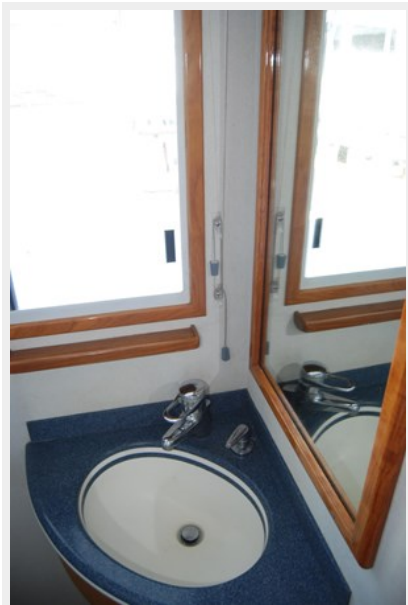


image3 copy



image2 copy



DSC_0361



IMG_0841



IMG_0817

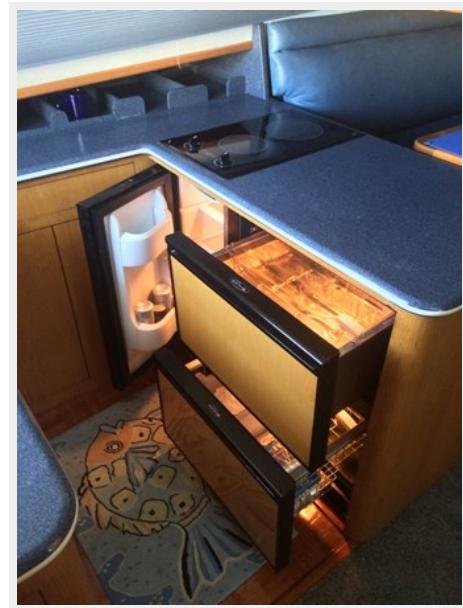


image4 copy

DSC_0357



IMG_0809



IMG_0811



image5 copy



IMG_0818



IMG_0821



IMG_0825



IMG_0827



IMG_0829



IMG_0835



IMG_0837



IMG_0842



IMG_0822



IMG_0882



IMG_0884



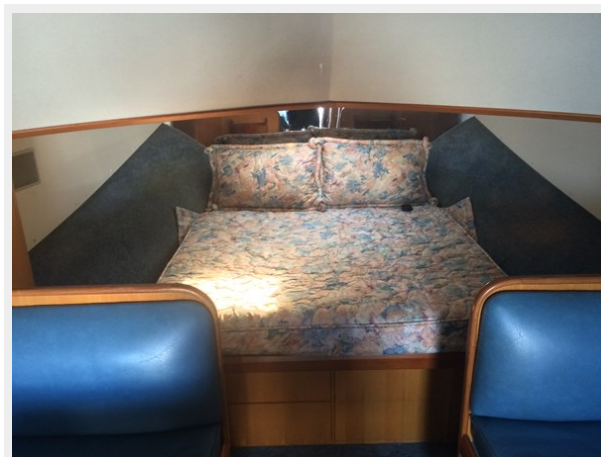
IMG_0848



IMG_0809



IMG_0805



CONTACTS

Andrey Shestakov, leading yacht broker of the sales department of Shestakov Yacht Sales Inc. Shestakov Yacht Sales Inc., the official representative of the Miami/Fort Lauderdale FL headquarters.

Contact details

Email: andrey@shestakovyachtsales.com

Web: shestakovyachtsales.com/en/

Telephones

USA: +1(954)274-4435

Office hours

Monday – Saturday: **9:00 - 21:00** EDT

Sunday: **closed**

Address



Harbour Towne Marina, 850 NE 3rd St,
STE 213, Dania, FL 33004