

SOVANA — PASSPORT YACHTS



Builder: PASSPORT YACHTS

Year Built: 2014

Model: Center Cockpit

Price: PRICE ON APPLICATION

Location: United States

LOA: 54' (16.46mm)

Beam: 15.5

Max Draft: 6' (1.83mm)

Our experienced yacht broker, Andrey Shestakov, will help you choose and buy a yacht that best suits your needs **Sovana — PASSPORT YACHTS** from our catalogue. Presently, at Shestakov Yacht Sales Inc., we have a wide variety of yachts available on our sale's list. We also work in close contact with all the big yacht manufacturers from all over the world.

If you would like to buy a yacht **Sovana — PASSPORT YACHTS** or would like help answering any questions concerning purchasing, selling or chartering a yacht, please call **+1(954)274-4435**

TABLE OF CONTENTS

TABLE OF CONTENTS	2
SPECIFICATIONS	3
Overview	3
Basic Information	4
Dimensions	5
Speed, Capacities and Weight	5
Accommodations	5
Hull and Deck Information	5
Engine Information	5
PHOTOS	6
CONTACTS	14
Contact details	14
Telephones	14
Office hours	14
Address	14

SPECIFICATIONS

Overview

Length Overall 54.5 ft.

Displacement 38,500 lbs.

Length at Waterline 45.47

Fuel Capacity 280 US gal.

Beam 15.15

Water Capacity 205 US gal.

Draft Deep 6'

Vertical Draft 63.5' (ICW)

Sail Area: Main 529 sq. ft. 130% Genoa 704 sq. ft. Working Jib 445 sq. ft.

Ballast 14,700 lbs.

1 Icom 506 VHF radio (New 12/2017)

1 HM 195 remote microphone (New 12/2017)

2 Raymarine eS97 (New 12/2017)

1 Raymarine i50 Depth (New 12/2017)

1 Raymarine i50 Speed (New 12/2017)

1 Raymarine i60 Wind (New 12/2017)

1 Raymarine ACU 400 pilot computer (New 12/2017)

1 Raymarine P70R control head (New 12/2017)

1 Raymarine EV1 Compass (New 12/2017)

1 Raymarine AIS 650 AIS unit (New 2017)

1 Raymarine AIS splitter (New 12/2017)

1 Fusion MS-UD755 stereo unit (New 12/2017)

Magnum MS-2812 Pure Sine Wave Inverter (New 12/2017)

Magnum ME-RC50 Remote Panel (New 12/2017)

Side Power Dual Prop Bow Thruster

Upgrade 3 Harken 70.2 STEC Electric Winches from Standard Electric Utility

Galvanic Isolator

Copper Strapping in Hull for SSB

Powder Coated Selden Spar and Boom

Fresh Water Deck Wash down

Dual Racor Filters

Removable Starboard Settee Table

Filler and Cushions for U shaped Dinette

Additional Cocktail Table with storage for Dinette

Folding Headboard in Aft Stateroom Berth

Colored Corian Upgrade in Galley and Heads

Glass Fronted Crystal Locker

Cherry Interior in lieu of Teak

Ultra Leather Fabric Upgrade in Main Salon

Stainless Towel/Safety Bar in Aft Head

In Boom Roller Preventer - Gybe Preventer

Cruise Air Reverse Cycle Air Conditioning System (36,000 BTU) 3 Units

MASE model I.S.8.1 Diesel Generator 7.8 kW (665 hours)

Basic Information

Category: Center Cockpit

Model Year: 2014

Year Built: 2014

Country: United States

Dimensions

LOA: 54' (16.46mm)

LWL: 48' 11" (14.91mm)

Beam: 15.5

Max Draft: 6' (1.83mm)

Speed, Capacities and Weight

Water Capacity: 135 Gallons

Fuel Capacity: 270 Gal Gallons

Accommodations

Total Cabins: 2

Total Berths: 3

Total Heads: 2

Hull and Deck Information

Hull Material: Fiberglass

Engine Information

Engines: 1

Manufacturer: Yanmar

Engine Type: Inboard

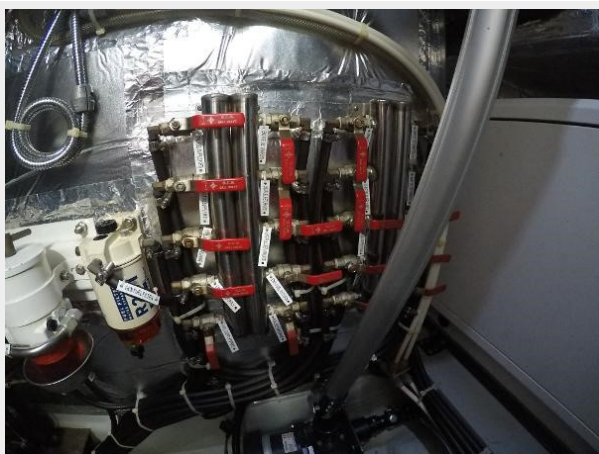
Fuel Type: Diesel

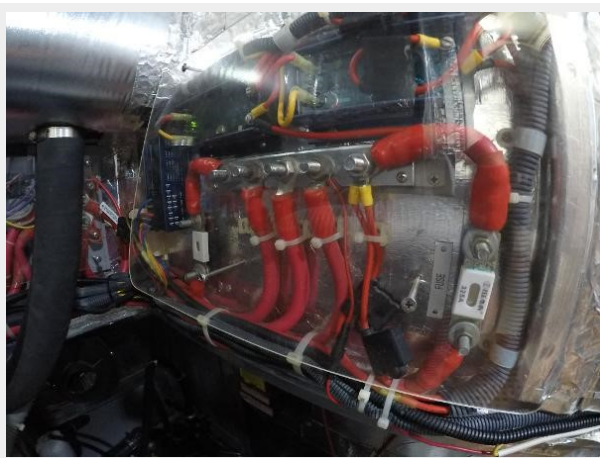
PHOTOS

















CONTACTS

Andrey Shestakov, leading yacht broker of the sales department of Shestakov Yacht Sales Inc. Shestakov Yacht Sales Inc., the official representative of the Miami/Fort Lauderdale FL headquarters.

Contact details

Email: andrey@shestakovyachtsales.com

Web: shestakovyachtsales.com/en/

Telephones

USA: +1(954)274-4435

Office hours

Monday – Saturday: **9:00 - 21:00** EDT

Sunday: **closed**

Address



Harbour Towne Marina, 850 NE 3rd St,
STE 213, Dania, FL 33004