

## CARTOUCHE — BLUE COAST YACHTS



**Builder:** BLUE COAST YACHTS

**Year Built:** 2011

**Model:** Catamaran

**Price:** PRICE ON APPLICATION

**Location:** Antigua and Barbuda

**LOA:** 95' 0" (28.96m)

**Beam:** 40' 0" (12.19m)

**Min Draft:** 2' 0" (0.61m)

**Max Draft:** 7' 11" (2.41m)

**Cruise Speed:** 12 Kts. (14 MPH)

**Max Speed:** 15 Kts. (17 MPH)

Our experienced yacht broker, Andrey Shestakov, will help you choose and buy a yacht that best suits your needs **Cartouche — BLUE COAST YACHTS** from our catalogue. Presently, at Shestakov Yacht Sales Inc., we have a wide variety of yachts available on our sale's list. We also work in close contact with all the big yacht manufacturers from all over the world.

If you would like to buy a yacht **Cartouche — BLUE COAST YACHTS** or would like help answering any questions concerning purchasing, selling or chartering a yacht, please call **+1(954)274-4435**

# TABLE OF CONTENTS

---

|   |    |
|---|----|
| TABLE OF CONTENTS                             | 2  |
| SPECIFICATIONS                                | 4  |
| Overview                                      | 4  |
| Basic Information                             | 4  |
| Dimensions                                    | 4  |
| Speed, Capacities and Weight                  | 4  |
| Accommodations                                | 5  |
| Hull and Deck Information                     | 5  |
| Engine Information                            | 5  |
| DETAILED INFORMATION                          | 6  |
| Overview                                      | 6  |
| Refit 2017                                    | 6  |
| Construction                                  | 13 |
| Concept and Design                            | 13 |
| Rigging and Sails                             | 13 |
| Exterior Layout                               | 14 |
| Engines, Plumbing, Hydraulic, and Electricity | 15 |
| Entertainment and Electronics                 | 16 |
| Interior Layout                               | 17 |
| Exclusions                                    | 18 |
| Disclaimer                                    | 19 |
| PHOTOS  | 20 |
| Cartouche © StuartPearce S160                 | 20 |
| CARTOUCHE © STUARTPEARCE S168                 | 20 |
| Cartouche © StuartPearce S081                 | 22 |
| Cartouche © StuartPearce S071                 | 22 |
| Cartouche © StuartPearce S073                 | 23 |
| CONTACTS                                      | 28 |

---

|                 |    |
|-----------------|----|
| Contact details | 28 |
| Telephones      | 28 |
| Office hours    | 28 |
| Address         | 28 |

---

# SPECIFICATIONS

---

## Overview

---

After being purchased by her current owner in 2016 CARTOUCHE underwent a \$4MM USD refit from 2016-17 in Palma, Mallorca which essentially transformed her into a completely new vessel.

A full overview of all work completed are outlined in the brochure & an itemized work list is available upon request.

If you are looking for a turn key large catamaran then CARTOUCHE offers that platform.

## Basic Information

---

**Category:** Catamaran

**Sub Category:** Cruising Sailboat

**Model Year:** 2011

**Year Built:** 2011

**Refit Year:** 2017

**Refit Type:** Full Refit - Interior, Exterior, Mechanical Upgrades

**Country:** Antigua and Barbuda

**Fly Bridge:** Yes

## Dimensions

---

**LOA:** 95' 0" (28.96m)

**Beam:** 40' 0" (12.19m)

**Min Draft:** 2' 0" (0.61m)

**Max Draft:** 7' 11" (2.41m)

## Speed, Capacities and Weight

---

**Cruise Speed:** 12 Kts. (14 MPH)

**Max Speed:** 15 Kts. (17 MPH)

**Gross Tonnage:** 80 Pounds

**Water Capacity:** 792 Gallons

**Holding Tank:** 264 Gallons

**Fuel Capacity:** 2115 Gallons

---

## Accommodations

---

**Total Cabins:** 4

**Sleeps:** 8

**Total Heads:** 5

**Captain Cabin:** True

**Crew Cabin:** 2

**Crew Berths:** 4

**Crew Sleeps:** 6

**Crew Heads:** 1

---

## Hull and Deck Information

---

**Hull Material:** GRP

**Exterior Designer:** Coste Design

**Interior Designer:** Coste Design

---

## Engine Information

---

**Engines:** 2

**Manufacturer:** Cummins

**Model:** QSB 5.9,

**Engine Type:** Inboard

**Fuel Type:** Diesel

---

# DETAILED INFORMATION

---

## Overview

---

After being purchased by her current owner in 2016 CARTOUCHE underwent a \$4MM USD refit from 2016-17 in Palma, Mallorca which essentially transformed her into a completely new vessel.

A full overview of all work completed are outlined in the brochure & an itemized work list is available upon request.

Listed below are a selection of upgrades from the refit:

- complete rewiring of the entire vessel
- new audio visual systems throughout
- new navigation equipment
- reconfiguring of the main salon layout, exterior deck spaces, and upper deck
- new carpentry on the interior
- refinishing of the hull
- exterior paint on the hull & superstructure
- new teak decks
- new tender
- new stone in bathrooms
- new windows on the superstructure
- new insulation & ventilation systems
- new jacuzzi
- removal & reinstall of mast with new rigging/wiring
- new sails
- new crew cabins (complete refinish)
- new lighting on the interior & exterior
- new satellite communications & antennas

CARTOUCHE was just hauled out in Palma in November 2019 where she completed her annual maintenance & received a new bottom job. All maintenance & service records are up to date and current.

If you are looking for a turn key large catamaran then CARTOUCHE offers that platform.

CARTOUCHE comfortably sleeps 8 guests in 4 cabins and up to 6 crew in two cabins which includes a separate captain's cabin + cabin with queen berth and bunks.

---

## Refit 2017

---

### Initial Work:

- Wiring work, electrical installations and lighting installations
- Improvements to the satellite communication system and new antennas
- On-board network system improvement work and visual audio systems
- improvements in navigation and communication system
- New crew cabins, carpentry, upholstery, plumbing, lighting, mattresses, wall bulkheads and ceilings
- Comprehensive interior area reform, new ceiling panels with track systems, lounge seating area, bulkheads and paint, guest mattresses, interior paint and blinds and curtains.  
Manufacture of new outdoor seating areas in puente, new bar module on bridge and main deck, new seats and custom upholstered cushions
- Improvements to on-board safety systems 6 months mooring and boat costs
- New major sail
- New seal candle
- New gennaker-type candle Discount
- Take out and put mast and jarcias New quests and reforms
- Hydraulic work for mast and jarcias
- Improvements in kitchen furniture
- Steelworks instainlesssteelandchandeliersandcoveredaccordingto class/flagneeds  
Improvements to the Insulation and Ventilation System
- Install new Jacuzzi on bridge
- Retouching expenses in original paint

### Extras:

- Rigging
- new electric barbecue for new bridge module
- new crystals and windshields due to de-lamination in old sealed hatches
- paint consumables
- thermal and acoustic insulation in the living room
- pieces of methacrylate hatches on the roof of the bridge fiber arrangements
- thermal insulation and acoustic main roof ceiling
- new pieces of the jarcias
- new teak in bow and side aisles
- fridge of wine
- carp and scaffolding montage
- August extra expenses in STP (varadero) various plumbing jobs
- scaffolding protection jobs
- supply of navigation lights and unhumidifying machine new furniture holsters
- fixes and new parts in desalinating plant
- 4 tap in 1 kitchen
- extra works of interior furniture painting
- return- jobs not performed in desalinator
- protective finish on new aft sofa
- preparation and painting of deposits and bilge

- fixes and new compressed air compressor
- Wall lamps - interior
- ice machine
- legs for new table outdoors
- new faucets - interior
- extra cleaning and fuel filtration work
- arrangements to hydraulic system in starboard bow new methacrylate in new deck hatches
- reviews and improvements to on-board security systems storage expenses for households
- transport costs
- new shower screen
- assembling new navigation equipment
- assembling new navigation equipment
- assembling new navigation equipment
- remove wires on mast and install new electrical wiring arrangements to navigation panels
- bilge system
- modifications of the electrical system on bridge
- electric disassembly of generator
- installation of wiring new barbecue
- installation of inverter bases
- move electrical terminal plates
- electrical wiring clamping system on ship
- labor and help with electrical systems
- take out old wiring on bridge
- take out electric DC system on bridge
- take out windshield wipers
- take out blinds and old wiring
- new fans in the engine room
- new sensor system in tanks
- organize wiring on machine room ladder
- organize wiring in aft machine room areas
- installation of new generator electrical system
- wiring installation for new visual audio system
- electric jacuzzi installation
- emergency lights
- additional 220v plugs in marine
- fixestometer kilowatts
- arrangements to electric hydraulic machinery system arrangements to hatch sensors
- extractors in bathrooms
- load tests on generators
- LED lights in strips
- master off button design in lounge
- total wiring jobs for jobs above
- extra stone work in bathrooms
- methacrylate screen on outer bridge



- engineering calculations for navigational nail supports
- rolling and hydraulic reefin system arrangements Structural engineer expenses - mast
- new fridges in bridge kitchen and bar
- structural calculations for new navigation domes fiber/composite arrangement work and reinforcements NDT mast inspection expenses
- new lights in crosses
- additional work in jarcias
- crane service
- hydraulic system arrangements
- emptying tanks, cleaning and fuel treatment Sea mooring expenses Port de Mallorca diver service for hull-pass ingenor fixes cleaning up grey tanks
- fixtures and hardware new marine cabins manufacture of mast plate in stainless steel expenses mooring Pantalan med
- new tecma toilet
- crew zone sinks
- fuel filters
- blacksmith's work bathroom platform parts navigation equipment insulation cabin armador initial paint retouching mast carp on the bridge
- Tent the whole boat, second payment
- new water pumps
- shower and bath parts, taps etc., guest bathrooms
- tank cleaning
- New washer and dryer
- mast repairs
- fiber reinforcement work in squares on the mast
- repairs to the flashing conduct
- supply of stone material and placement in bathrooms
- stainless steel repairs
- nano-layer treatment of several areas of the dead work
- making life raft supports
- arrangements to the major halyard
- engineering fees and repairs on the mast
- stone material for bars and crew bath
- repairs to 8 hatches
- scaffolding jobs
- supply of new hydraulic motor for zero code sails
- New auxiliary vessel, brand Ribeye SYT500
- smoothing work, repair and masking of hull, superstructure and boom and mast paints
- initial arrangements to hull-painting areas and stern damage manufacture of supports of the new navigation domes hydraulic system work
- new headway lights
- Complimentary lampara and reading in guest cabins work in navigation system
  
- costs of transporting table legs

- Fiber and composite hull arrangements
- modifications and additions on raft supports
- New cables and ropes
- return of unnecessary design jobs
- additional electrical wiring work
- Harken winches switches
- revisions and modifications to Cumminn engines
- additional parts and labor forengine revisions
- recycling of crystals
- new hatch stamps
- mooring and boating expenses Dec 2016-final April 2017
- fiber repairs in windows
- painting of bow tambuchos
- modifications of designs in marine
- reviews and improvements to safety and lifeguard systems
- arrangements to cracks at bow tip in candle holder code zero
- revisions to water purification system
- sealing tap background and passing faulty helmets
- GDR safety equipment reviews
- Total safety equipment in original estimate
- Tank caps
- big sail head and trampolines in bow
- Fabrics for panel and bulkheads upholstery, extra cushioning and upholstered beds and mattresses
- mirrors new guest cabins
- medical teams
- Bespoke metal parts for lifeguard stands
- Metalnox - metal works
- DURATEC various capes for candles
- total charged in original estimate metal works
- Christian metal works
- Christian metal works, anchor and mast base
- Christian metal works, polishing
- MTSea works on air conditioning system
- Ingo Deep data improvements in visual audio system
- BMC arrangements to mast lift point
- Vert & Vert storage and revisions to auxiliary
- Mallorca Yacht Service reels Leemar
- MTSea arrangements to water cooling system
- BYD valuation
- Echo Marine reviews to water treatment system
- Pinmar Supply - hardware and grocery items acastillaje Aug 2016-April 2017 They have extra bathing accessories
- Micro waves new Miele

- BMC works on new domes, control screen and hatches
- Winch works reel reviews Harken
- improvements to central cooking island
- Precision Marine engine parts
- Julian Godbolt stern labels
- Ribeye transport new auxiliary
- Marina Port de Mallorca, Mooring May
- RC Marine Parts and Labor Engines
- neoprene defense covers
- Soamar insulation extra bathrooms and cabin crew
- Echo Marine Service Water Treatment
- OSCAR SIERRA reviews and improved security equipment
- Rolling stock extra paint jobs by management April & May
- Metalnox, short metal place
- Blacksmith works - extras (fast metal)
- STP expenses May
- Navcom - NX700 Antenna and BNWAS Bridge Monitoring System Oscar Sierra - revisions to fire system engine room
- RC Marine engine arrangements and sea trials
- STP fuel costs
- STP cranes to install furniture and domes on bridge
- MPS plumbing jacuzzi, bridge and interior
- Rialto - kitchen accessories
- Kitchen parts
- Evolution Sails candle cleaning foker and trampoline assembly MDS solimar hatch parts, registration plates
- BYD, testing, study and stability book
- HSM hydraulic system arrangements at rudder
- RSB loop to restrict boom movement
- RSB cleavage of the largest, defense lines, booty capes and braids RSB labor repairs major guide
- Metalnox - remove thread in metal part

RSB - Remove all jarcias, remove mast with crane, transport to the area of revisions in the dock, check all the pitches capes and pulleys, take out crosses and boom, check botavara, assemble jarcia systems, assemble stick, transport the ship, monitor crane and assembly, connect all hydraulic and mechanical systems of jarciaands and wiring. Repeat the whole process of removing/putting mast again to facilitate complete paint and new repairs on the mast.

- BMC repairs various fiberglass, structural composite and cosmetic areas on the dead work discovered by removing old putty and preparing surface for final paint
- Extras of port side carpentry in kitchen
- Carpentry extras and upholstery in marine
- Additional carpentry work on navigation bridge and crew

- Jacuzzi modifications in furniture and custom drainage area woodwork extra side panels of noble areas and columns of windows upholstery, labor panels on top
- Etouch- additional labor pear electrical system
- new bathroom furniture
- Lacquered and varnished floors in living room and guest cabins
- New lighting system and interuptors, parts and machinery, batteries, hatch sensors,
- installation of cintraicendia system cables, installation of LED luminaires on outdoor furniture Workmanship from the facilities above
- Wiring, terminals and fixings for electrical installations above Manufacture
- of metal brackets for boards
- Manufacture of metal supports for sports items in bow Custom stainless steel supports for slava lives
- Stainless steel piexas for cooking hobs
- Custom delrin parts and metallic Barrax table stands for cabinets
- Stainless steel jobs in bathrooms and kitchen
- Inspect and repair air conditioning machine 1 Centrifugal fan
- 1 Fan holders
- Cajoes, tapas and carpentry furniture in kitchen
- Exterior carpentry work in jacuzzi, outdoor areas, bridge tables and edges and side table bases
- Motor wiring
- Shipyard expenses for stability testing
- Fire protection equipment
- Jarcia's works
- Naval effects, cabulleria, sandpaper, paints etc.
- New kitchen extractor
- Stools and gunboard
- Bridge closure canvas
- Bow awning
- Liftering hoop holsters
- lifeboat covers
- White auxiliary seat upholstery
- aft table covers and lounge
- Sofa covers
- extra decorative quadrants at the customer's request
- Defense cases x 12
- Hydraulic system review work in candle cylinder
- Major's reel hydraulic system overhaul work
- Hydraulic system review work on hoses and oil
- Container spending on shipyards
- Fixes and improvements to the TV and audiovisual system, re-install music system
- Administrative and management expenses for auxiliary import
- Administrative and management expenses for candle import
- Administrative and management expenses for importing original appliances Outboard

storage and engine overhauls

---

## Construction

---

The Blue Coast 95' yacht CARTOUCHE is built of high tech composite, well known for their light weight, strength and extreme durability.

The construction process combines the infusion of epoxy resin / Glass fiber/Carbon fiber and PU foam core. The vessel is then subdivided into smaller individual modules, including two full beam carbon fiber composite bulkheads bonded into a single symmetrical arrangement. All structural elements (bulkheads, frames, roof and decks) are carefully integrated with the interior.

Only few shipyards are capable of handling the technology and processes necessary for the construction of a composite maxi catamaran : H2X SHIPYARDS, in South of France, is one of the leading experts in this single infusion technology.

All structural elements made using the "one shot" vacuum bagging system. It is a delicate procedure that requires experience, precision and know-how.

During construction, the weight was continuously monitored and compared with studied estimates. Each separate structural component has been approved by laboratory testing.

The yacht has been built in a weather protected and temperature controlled construction hall, as per BUREAU VERITAS specifications.

---

## Concept and Design

---

The sailing yacht Cartouche, the Blue Coast 95' catamaran, was designed by the renowned naval architectural office of COSTE DESIGN & PARTNERS and heralds a new generation of high tech opulent sailing yachts.

She is undoubtedly one of the most elegant luxury catamarans ever built, while offering premium performance and superior comfort combining modern styling with refined aerodynamic lines.

The well-known catamaran's stability is such that rolling and heeling are reduced to the minimum at anchoring and while sailing in rough conditions, thanks to her long narrow hulls. The hulls' shallow draft enables anchoring and cruising close to shore, an option not possible on many monohull sailing yachts.

---

## Rigging and Sails

---

The Blue Coast 95' is built to be manned by a minimum crew. All the sails and mooring commands are operated from the helm station at the fly bridge, even the styled hydraulic furling

boom, fitted with an automatic bagging system to protect the sails. This allows a very safe and easy sail reduction and open new perspectives in the maneuvering of giant sailing catamarans .

|                  |   |
|------------------|---|
| Mast             | 33m (110') rotating carbon fiber wing from Petitjean Composites (3D technology)   |
| Boom             | Carbon hydraulic furling boom (3D Technology)   |
| Standing rigging | Kevlar, light weight, low drag and high efficiency  |
| Rigging          | Deck sloop  |
| Sails fabric     | 3DL by North Sails  |
| Main sail        | 235m2 full battened fat head  |
| Solent           | 115m2 self tacking with hydraulic furler  |
| Storm Jib        | 24m2  |
| Gennaker         | 280m2 optimizing power in light wind conditions   |
| Spinnaker        | 500 m2  |
| Winches          | 1 x Harken 1000 STH for mainsail<br>1 x Harken 1000 STH for solent and storm jib<br>2 x Harken 1110 STH for gennaker and spinnaker in « carbon »<br>1 x Harken 1000 STH for spinnaker and gennaker halyards |
| Mainsail track   | Tenderlift Magic Trim   |

## Exterior Layout

Sailing yacht CARTOUCHE, the Blue Coast 95's exterior lines are the result of hydro & aerodynamic research, speed performance, comfort, ergonomics and the owner's particular aesthetic wishes ... The entire deck is recovered with teak, all hatches are flush, the solid stainless steel rigging secure the easy passage all around the deck...

Forward deck :

The spacious fore deck invites to enjoy time seated on the two forward pulpits seats or simply to lounge on the large nets, while admiring the complete sails out ... The anchoring and running rigging equipment has been incorporated seamlessly into the deck's layout, for an easy secure passage everywhere. A central foldable ladder will also invite you to go to swim from the front ...

- 2 anchors of 120 kg CQR with chain Studlink diam 16 mm with 110m of chain each
- 2 windlasses Lewmar V8 hydraulic
- 2 capstans C5 Lewmar for docking lines
- Central longitudinal platform for mooring and access to front beam with incorporated ladder
- Front transversal beam in carbon
- 2 forward pulpits with teak seats
- 2 large trampolines nets
- Several storage lockers
- Full teak cover on fore deck
- Flush hatches high class from Solimar

Aft salon and access to transoms :

The exterior aft salon offers shaded lounging with unobstructed panoramic views and is separated from the large interior salon by a wide sliding door. The aft stairs pertaining to each hull lead to Lazarette compartments and down to the transom where one can store personal watercrafts, scuba diving equipment and other water sport toys.

- Lounge area with salon equipped by Royal Botania
- Dining area with a long table for 10 with extensions and chairs
- Large storage lockers in cockpit floor
- 2 large sunmats displayed on each side of the cockpit
- Bar arrangement with fridge, sink

Hydraulic aft platform and transoms :

CARTOUCHE is also equipped with a hydraulic swim platform that drops 60cm below water level to facilitate the launching of the main tender. This platform can also be used as a sunbathing deck and is the perfect support to water sports. On each hull a swim ladder grants direct access to the water.

- Hydraulic platform in aluminium with teak
- 2 long transoms with swim ladder incorporated
- Fresh water shower hot/cold on each transom
- Access to both technical rooms
- Hydraulic boarding gangway 3,50m long

Flying bridge and helmstation :

From the aft one reaches the fly bridge via a comfortable stairway to starboard. The helm station is amidships and the rigging equipment is located to port and starboard for ultimate control and ease of handling.

A second, vast sunbathing area is located on either side of a Spa Pool and amidships there is a dining area where guests can enjoy remarkable views with sofa and bar. A dumbwaiter has been installed to bring food directly up from the galley.

- Double comfortable bench at helmstation
- Dining area with table and chairs
- Carbon steering
- Large protection windshield
- Engines and bow thruster controls
- Electronics screens
- All controls for winches and sails
- SPA pool at the rear of the flying bridge
- Comfortable and adjustable sunmats all around
- Teak cover at the complete flying bridge
- Large hardtop with view on rigging
- Bar with sink, fridge, plancha, grill and lift

## Engines, Plumbing, Hydraulic, and Electricity

Technical rooms are located at the back side of each hull with a large opening hatch accessible by the deck ; organization is optimized, and space allows an easy access for all maintenance requirements for the crew. All pumps, systems and fire extinguishing process are certified and approved by BUREAU VERITAS.

Engines

|               |  |
|---------------|--|
| Engines       | 2 x 425 HP Inboard, Diesel, QSB 5.9, Cummins<br>2 additional 115A alternators (for services) |
| Speed         | Max 12 knots (13L/H per engine at 9 knots)   |
| Propellers    | 2 x MaxProp 3 blade auto fathering 29'   |
| Bow thrusters | 2 Lewmar 250 hydraulic (connected on PTO from generator) of 20hp each                        |

### Plumbing and hydraulic

|                          |   |
|--------------------------|---|
| Fuel Capacity            | 2,115 gal (8,000 liters)                      |
| Range                    | long range, Transatlantic possible            |
| Water Capacity           | 792 gal (3,000 liters)                        |
| Black waters             | 2 tanks for a total of 264 gal (1,000 liters) |
| Grey waters              | 2 tanks for a total of 264 gal (1,000 liters) |
| Steering gear            | Tenderlift hydraulic                          |
| Hydraulic station        | 24V - 380V - PTO (power-take-off) system      |
| Watermaker               | 2 x Sea Recovery 280L/H each                  |
| Waterboilers             | 2 x 150L                                      |
| Pressurized water system | 2 units Headhunter                            |
| Toilets                  | Tecma fresh water Silence plus                |

### Electricals

|                   |   |
|-------------------|---|
| Generators        | 1 x 27,5KW Onan<br>1 x 13,5KW Onan  |
| Shore connection  | 1 x 220V/50HZ and 2 x 380V/50HZ   |
| A/C               | Webasto reversible Bluecool Premium 2x72000 BTU<br>1x4500 for crew - 1x9000 per aft guest cabin<br>2x9000 for the stbd fwd cabin - 1x6000 for laundry<br>2x16000 for the master - 1x16000 for the steering area<br>2x20000 and 1x24000 for the main salon |
| Chargers          | 2 x 35A Victron for engines batteries<br>3 x 100A Victron for services batteries  |
| Inverter          | 2 x 3KW Victron   |
| House batteries   | 1200A gel batteries in 24V  |
| Engines batteries | 2 x 115A  |
| Backup batteries  | 140A / 24V  |

## Entertainment and Electronics



CARTOUCHE is equipped with the best equipment and allows a lot of enjoyment on board.

- Large flat screen TV Samsung 55' in main salon with DVD player
- Bose system Lifestyle 5.1 with speakers in salon and cockpit
- Sound system at the flying bridge
- TV antenna KVH M9
- TV Samsung 32' + DVD player
- Bose 123 GSX in Master cabin
- TV Samsung 32' + DVD player + Bose station in each cabin

Navigation equipment is complete and optimized thank's to the choice done on Brookes & Gatehouse.

At helmstation inside :

- Navigation station B&G H3000 Hercules
- Autopilot B&G H3000 with control GPD
- Remote control wireless for autopilot with receiver
- Compass Halcyon 3D gyro
- Computer with MaxSea software and Timezero explorer and AIS Maxsea module
- AIS transmitter / receiver
- Radar 2 screens 17'' LCD
- Satellite compass SC30 with interface NMEA
- Navtex with antenna active
- VHF Icom 603 ASN
- GPS Furuno GP32
- Beacon Sarsat
- Inmarsat Fleet Broadband 250 Sailor
- Inmarsat Mini C with security alert system
- Horn

At flying bridge :

- Navigation station B&G H3000 Hercules
- Autopilot B&G H3000 with control GPD
- Module black box NavNet 3D Furuno with keyboard
- Repeater screen for computer
- Radar 2 screens 17'' TFT with antennae 4 kw
- Camera FLIR thermic
- VHF
- Transponder Sart

In crew quarters and Master cabin :

- Repeater multifunction B&G H3000 Hercules

## Interior Layout

The Blue Coast 95's interior accommodations and decor meet the latest standards in comfort and luxury using lightweight materials and state of the art craftsmanship. The choice of the owners was to create a unique living space where the modern galley is designed for being part of the spirit of the yacht ...

The master cabin is located on the main deck, with an incredible view on the front while other guests cabins are displayed in both hulls.

Each space has his own identity, black and white are signing this very elegant and pure interior ... Carpentry is treated with refined grey oak, as well as floors on a light sandwich structure ; the highest names are signing the benches and bar stools (Roche Bobois and Bonaldo), comfortable chairs (Bo Concept), but also the bathrooms (Fratelli Fratini and Jandelle), the different lights (Diesel, Kartell and Foscarini) ... Swarovski and Antilo are giving a precious touch to the bedrooms, each area inspires to serenity and refinement.

---

## MAIN DECK

- Master bedroom on the front starboard with sea view
- Low cabinetry all around under the panoramic windows
- Spacious desk area with sea view and comfortable chair
- Ensuite bathroom with large shower accessible by starboard stairs
- Salon area with comfortable benches and library
- Large carpet and design furnitures
- Navigation station at the front port with panoramic view
- Large central fully equipped galley with - garbage compactor, - hood and induction cooker  
Neff st/steel - oven Neff - dish washer Siemens - microwave oven Neff
- Lift in galley to the flying bridge
- Long bar furniture with bar tools and suspended lamps
- Numerous storage and cupboards
- All windows in high tech glass from Tecnoglass

## STARBOARD HULL

- 2 Guest cabins with desk area and spacious storage
- Ensuite bathroom with mosaic and large shower
- Wine cooler s/s Liebherr and large freezer s/s Liebherr
- Lazarette with watercraft storage
- Fore peak for storage with access from the deck
- Engine room at the rear with access from the deck

## PORT HULL

- 1 Guest cabin with desk area and spacious storage
- Ensuite bathroom with mosaic and large shower
- 2 Crew quarter for 6 in the front bow hull with headroom
- Laundry area with washer and dryer 8KG Siemens
- Crew kitchenette with sink, fridge, cooker and table
- Lazarette for diving storage and telescopic gangway
- Fore peak for storage with access from the deck
- Engine room at the rear with access from the deck

---

## Exclusions

Owner's personal belongings.

## Disclaimer

---

The Company offers the details of this vessel or yacht in good faith but cannot guarantee or warrant the accuracy of this information nor warrant the condition of the vessel. A buyer should instruct his representatives, agents, or his surveyors, to investigate such details as the buyer desires validated. This vessel or yacht is offered subject to prior sale, price change, or withdrawal without notice.

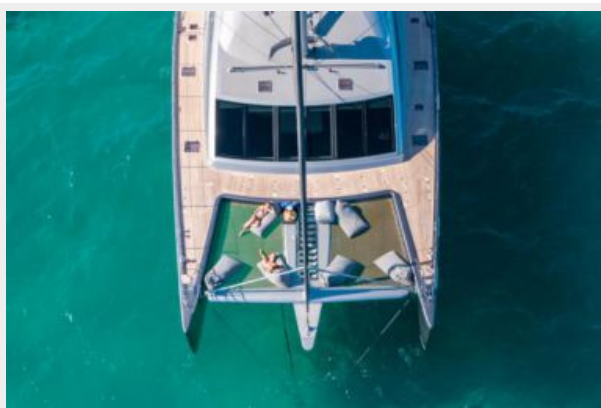
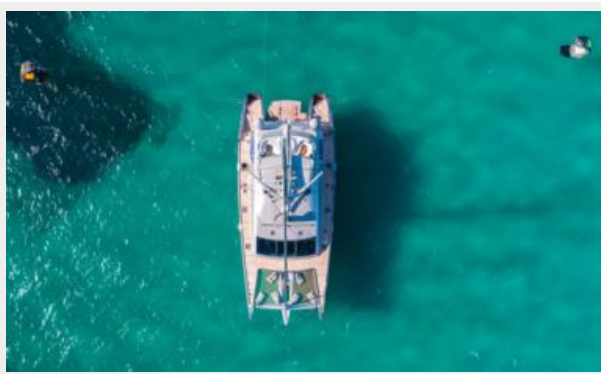
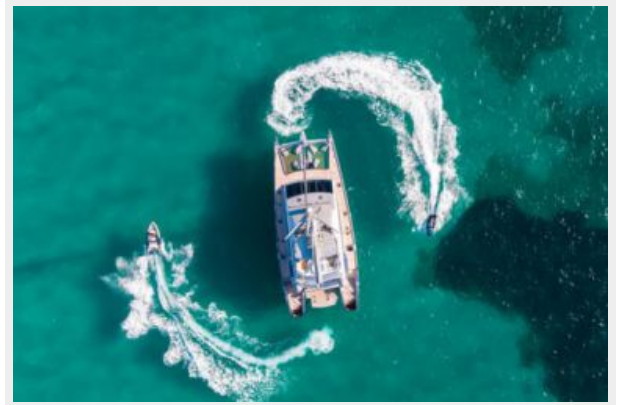
# PHOTOS

**Cartouche © StuartPearce S160**



**CARTOUCHE © STUARTPEARCE S168**









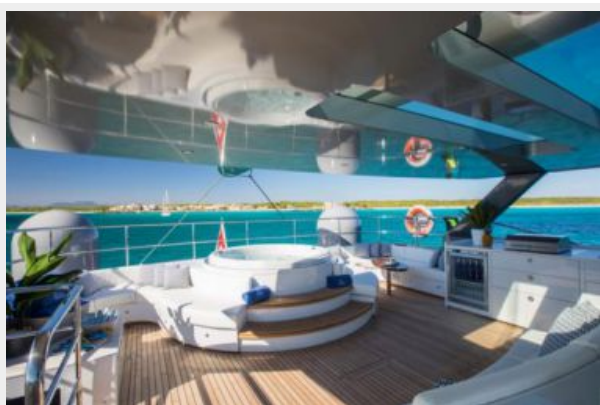
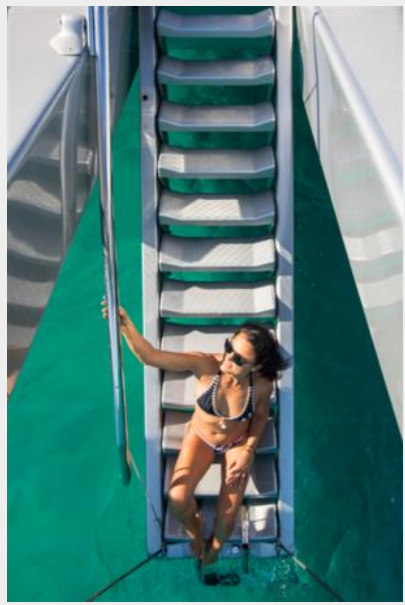
**Cartouche © StuartPearce S081**



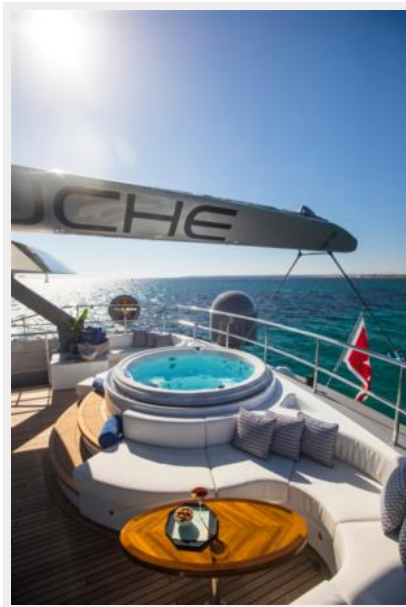
**Cartouche © StuartPearce S071**



### Cartouche © StuartPearce S073

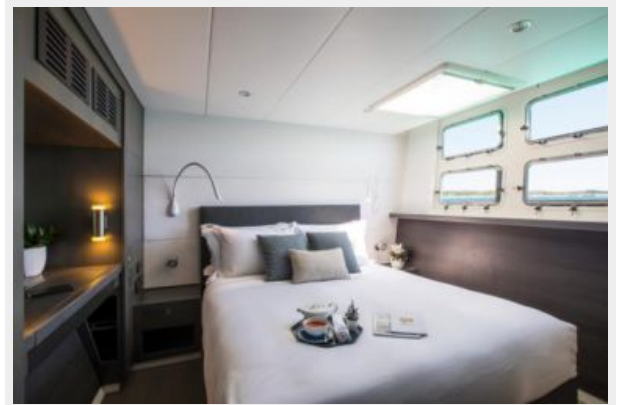














# CONTACTS

---

Andrey Shestakov, leading yacht broker of the sales department of Shestakov Yacht Sales Inc. Shestakov Yacht Sales Inc., the official representative of the Miami/Fort Lauderdale FL headquarters.

## Contact details

---

Email: [andrey@shestakovyachtsales.com](mailto:andrey@shestakovyachtsales.com)

Web: [shestakovyachtsales.com/en/](http://shestakovyachtsales.com/en/)

## Telephones

---

USA: +1(954)274-4435

## Office hours

---

Monday – Saturday: **9:00 - 21:00** EDT

Sunday: **closed**

## Address

---



Harbour Towne Marina, 850 NE 3rd St,  
STE 213, Dania, FL 33004