

NO NAME — PURSUIT



Судостроитель: PURSUIT

Год постройки: 2015

Модель: Катер для спортивной рыбалки

Цена: **ЦЕНА ЯХТЫ ПО ЗАПРОСУ**

Местонахождение: United States

Длина общая: 36' 11" (11.25m)

Ширина: 12' 0" (3.66m)

Мин. осадка: 1' 11" (0.58m)

Макс. осадка: 2' 11" (0.89m)

Крейс. скорость: 30 Kts. (35 MPH)

Макс. скорость: 45 Kts. (52 MPH)

Купить **No Name — PURSUIT** а также выбрать подходящую вам яхту из нашего каталога яхт вам поможет опытный яхтенный брокер Андрей Шестаков. На сегодняшний день компания **Shestakov Yacht Sales Inc.** имеет большое количество яхт в **собственном списке продаж**, а также тесно сотрудничает со всеми крупными яхтенными производителями по всему миру.

Для того чтобы купить яхту **No Name — PURSUIT** а также проконсультироваться по любому вопросу связанному с покупкой, продажей, чартером яхт позвоните по телефону **+7(918)465-66-44**.

ОГЛАВЛЕНИЕ

ОГЛАВЛЕНИЕ	2
ХАРАКТЕРИСТИКИ	3
Обзор	3
Основная информация	3
Размеры	3
Скорость, вместимость и масса	3
Размещение	3
Корпус и палуба	4
Информация о двигателе	4
ПОДРОБНОЕ ОПИСАНИЕ	5
Manufacturer Provided Description	5
Standard Equipment	5
Optional Equipment	7
Disclaimer	7
Исключения	7
Отказ от ответственности	7
ФОТОГРАФИИ	8
КОНТАКТЫ	17
Контактная информация	17
Телефоны	17
Время работы	17
Адрес	17

ХАРАКТЕРИСТИКИ

Обзор

This 2015 36' Pursuit OS 345 is new to the market and is designed to safely and comfortably take on blue water fishing or cruising. She is professionally maintained, has low hours, and is in prime, turn-key condition. Her options include twin Yamaha F350's w/ warranties until 5/29/21, Diesel Genset, cabin and cockpit air, bow thruster, Simrad electronics w/autopilot, and open array radar. Check out our full list of upgrades in the description section of our Full Specs.

Основная информация

Тип судна: Катер для спортивной рыбалки

Модельный год: 2015

Год постройки: 2015

Страна: United States

Размеры

Длина общая: 36' 11" (11.25m)

Ширина: 12' 0" (3.66m)

Мин. осадка: 1' 11" (0.58m)

Макс. осадка: 2' 11" (0.89m)

Скорость, вместимость и масса

Крейс. скорость: 30 Kts. (35 MPH)

Макс. скорость: 45 Kts. (52 MPH)

Водоизмещение: 15950 Pounds

Вместимость воды: 50 Gallons

Вместимость сточного бака: 18 Gallons

Объем топливного бака: 340 Gallons

Размещение

Всего кают: 1

Всего ком. состава: 1

Корпус и палуба

Материал корпуса: Fiberglass

Информация о двигателе

Двигатели: 2

Производитель: Yamaha

Модель: F350

Тип двигателя: Outboard

Тип топлива: Gas/Petrol

ПОДРОБНОЕ ОПИСАНИЕ

Manufacturer Provided Description

When tasked with designing a replacement model for the 335 Offshore - the best selling model in Pursuit's history - our engineers had a tall order to fill. Fortunately, our staff is full of over-achievers and the OS 345 was born. Slightly longer and wider than her predecessor, this model features an expansive cockpit for fish fighting and a large cabin for cruising and overnighting in comfort. The OS 345's hull has been specifically designed for twin Yamaha 350 hp 4-stroke engines, which provide optimal performance with minimal horsepower. Standard bow thrusters will give any captain the confidence to dock in close quarters, wind or strong currents. The express design includes an open helm with optional bridge deck cooling with air conditioning and an aft canvas enclosure so you can escape the elements without escaping the view. This layout also affords quick access from the helm to the cockpit when you have more screaming reels than anglers. The cockpit includes ample seating and an electric grill for entertaining and a host of fishing features including a recirculating livewell, a comprehensive rigging station with locking tackle drawers, insulated fish boxes and enough elbow room that you're not running into each other. In the cabin, we've developed an innovative circular seating arrangement forward for dining and socializing. The mid-cabin berth includes a comfortable settee. The head compartment includes a separate area for showering to minimize clean up after a nice hot shower. The galley features stainless steel appliances and Corian countertops like those found in fine custom homes - that's appropriate since you'll probably want to live aboard the OS 345.

Standard Equipment

Standard Equipment

HULL, DECK & COCKPIT •Pursuit® Protection Plan: 5-year hull/deck structural warranty 5-year blister-free warranty 2-year limited warranty •Aft-tilting fiberglass helm with integrated footrest, storage bin and stainless steel handrail •Infused fiberglass windshield with tempered safety glass and forward electrically actuated ventilating center window •Custom non-skid deck, cockpit surface and gunwale boards •Self-draining cockpit with scupper drains •One-piece welded, 316L stainless steel forward grab rail •High density PVC rubrail with stainless steel insert •Reinforced infused FRP one-piece stringer grid with bilge water management •Molded-in fiberglass bow pulpit with 316L stainless steel bow roller and 10" mooring cleat, skid plate and chain binder •Anchor windlass with switch at helm and remote switch at anchor locker with overboard drain and raw water washdown •17" x 17" fwd hatch with adjuster and sunshade slide screen •Acrylic transom door with heavy duty stainless steel hardware •Six (6) 316L stainless steel 10" mooring cleats •Full cockpit breathable coaming bolsters with dry-fast foam •Four (4) opening stainless steel portlights with screens •Port and starboard pantographic windshield wipers with fresh water washer system •Custom Captain's helm seat with foldup armrests and flip-up bolster •Custom molded cockpit entertainment center with fiberglass sink, folding hot and cold water faucet, Corian® cutting board and two aft storage drawers •Kenyon 240 v cockpit grill with fiberglass cover •Stbd. side 38 quart refrigerator/freezer with thermostat and drain •Portside

bridge-deck “L” shaped lounge with padded backrest with molded in footrest • Hideaway pull out aft facing seat • Acrylic sliding companionway door with lock/keeper and sliding screen • Interior and exterior hardtop overhead handrails • White powder coated aluminum support frames
Hardtop with sprdr lights, six (6) LED courtesy lights, eight (8) frame mounted rod holders, four (4) recessed speakers, two (2) 17 x 17 hatches, canvas storage pouches for PFD’s and three-piece drop curtain • Forward facing aft fold-down seat • Seven (7) Drink holders • Port and stbd 18” stainless steel transom grabrails • Dockside fresh water inlet with pressure regulator • Cockpit freshwater shower (hot and cold) COMFORT & INTERIOR • Solid Teak floor • Fiberglass interior headliner • Stainless steel stairs entry steps with teak treads • Port-side hanging locker, cedar lined with light • Overhead dinette lights (3), fwd. LED accent reading lights (2) and V-berth overhead LED accent lights (2) • Polk stereo with bluetooth streaming, JL audio speakers (6), subwoofer and JL audio amplifier • 110 v outlet, GFI protected • Teak table with inlay and electric adjustable pedestal • Dinette seating area with storage underneath • V-berth with 5” foam cushions and upholstered backrest • Mid-berth with 6” inner spring mattress, storage underneath and two (2) overhead LED lights • Mid-berth settee • Mid-berth privacy curtain • 19” flat screen TV (12 v) with DVD player • TV antenna • Dockside TV inlet • 6 gallon 240 v stainless steel water heater GALLEY • Complete Corian® galley top with storage cabinets overhead and drawers under sink area • Fiberglass sink with pressurized hot/cold mixing valve faucet • Kenyon 2-burner glass cooktop with pop up pan holders • 110 v microwave • 3.8 cu. ft. stainless steel refrigerator • Storage cabinet for plates, cups and utensils HEAD • Vacu-Flush head with 18 gallon holding tank • Fiberglass head/shower with sump pump and molded-in fiberglass shower seat • Bi-fold acrylic shower door • Full size linen closet • Designer sink with pressurized hot/cold faucet • Corian® vanity top with vanity mirror • Towel rack • Framed head door with full length mirror • 110 v outlet, GFI protected FISHING • Four (4) stainless steel rod holders in gunwale • Lighted Oceana blue 45 gallon circulating livewell with bottom drain plug • Two (2) in-deck, insulated fish boxes, 40 gallon each with pump and overboard discharge • Aluminum reinforcement plates and wiring for downrigger installation; aft gunwale, port side • Raw water wash down with cockpit and anchor locker hose outlets • Three (3) cabin rod holders • Under gunwale poly rod racks • Stbd side tackle center • Stainless steel cockpit toe rails INSTRUMENTATION, EQUIPMENT & SAFETY • Pursuit custom master circuit breaker switch panel for 12 v and 110 v • Yamaha® fuel management system • Boarding ladder, 316L stainless steel telescoping with fiberglass hatch • 50 amp 240 v/ 60 Hz dockside power with 25’ cord • One (1) 20 amp battery charger for engine starting batteries • One (1) 40 amp battery charger for house, electronics, and bow thruster batteries • Five (5) battery system with batteries, trays, and switches • Lewmar® bow thruster • 240 v A/C with reverse-cycle heat 16,000 BTU • Panda® 8.0 KW diesel generator • One 25 gallon diesel fuel tank • Teleflex power assisted dual cylinder hydraulic steering with tilt sport helm; 16” Edson comfort grip stainless steel steering wheel • Ritchie® Navigator compass • Cabin and mid-berth CO detectors • Independent windshield / wiper washer controls • Pursuit custom master 12-volt and 240/120-volt interior MDP switch panel • One (1) 12 KVA isolation transformer • Fresh water tank - 50 gallons • Fuel tanks - Total 340 gallons with fuel selector valves and on/off valves for each • Four (4) 12V receptacle; 2 helm, 2 cabin • Three (3) fire extinguishers • LED cockpit courtesy lights (7) • Dual drop-in electric horns on front of hardtop • Three (3) bilge pumps; 2 - 1500, 1- 1100 forward • Recessed Lenco® electronic trim tabs with indicator • Certification/standard compliance: ABYC, USCG, CE, Transport Canada

Optional Equipment

Engine warranties until 5/29/21 Yamaha security system 2 Simrad Nss 12 EVO2 displays w/GPS/chart plotte/fish finder Simrad 6kw Open array radar Simrad auto pilot Simrad VHF radio Helm AC Cashmere Helm/foot rest color Scarlet/Scarlet boot stripe Enticement interior package Transom rod holders Upgraded white stamoid marolon canvas 50' shore power cord Engine covers Outriggers Under water lights Spot light•Fresh white hull color All new batteries 2019

Disclaimer

The company offers the details of this vessel in good faith but cannot guarantee or warrant the accuracy of this information nor warrant the condition of the vessel. A buyer should instruct his agents, or his surveyors, to investigate such details as the buyer desires validated. This vessel is offered subject to prior sale, price change or withdrawal without notice.

Исключения

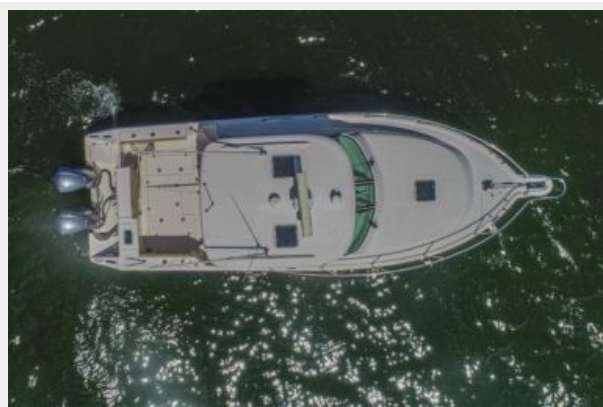
При продаже яхты исключаются личные вещи владельца.

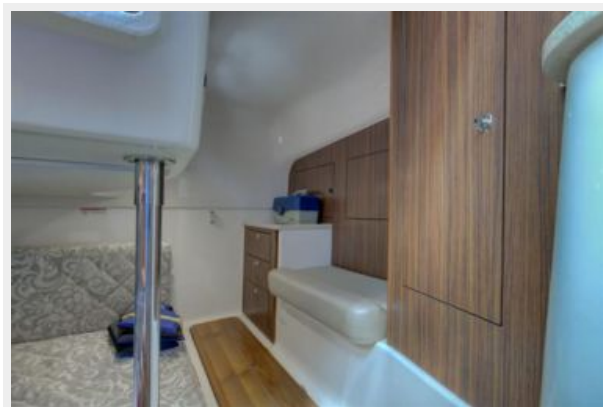
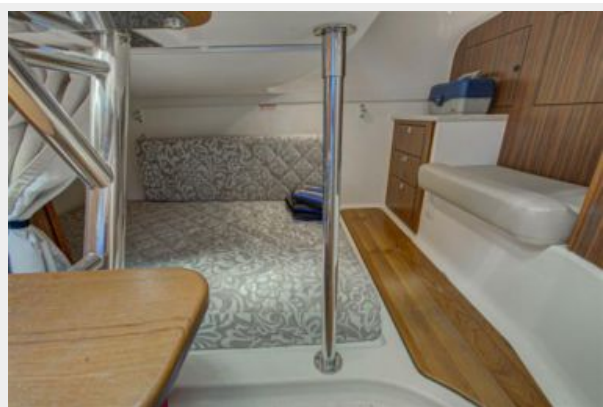
Отказ от ответственности

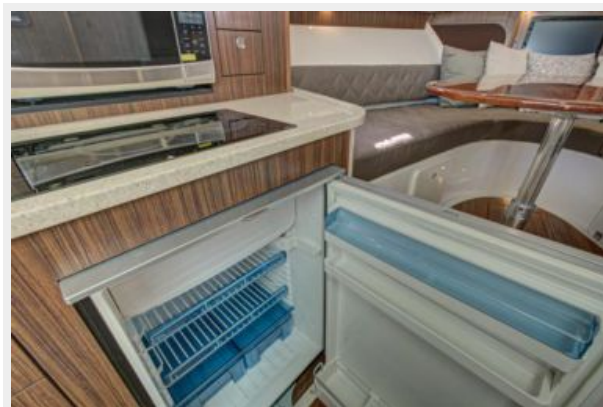
Компания предоставляет описание судна или яхты добросовестно, но не может гарантировать точность этой информации, а также не ручается за техническое состояние. Покупатель должен проинструктировать своих агентов или оценщиков исследовать представленную информацию более подробно, по собственному желанию. Продажа судна или яхты, изменение цены или снятие с продажи будет происходить без предварительного уведомления.

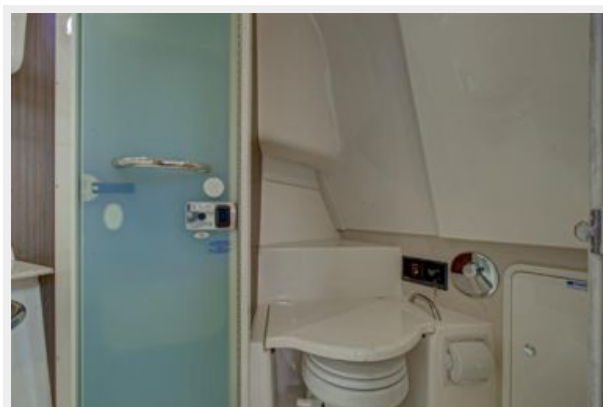
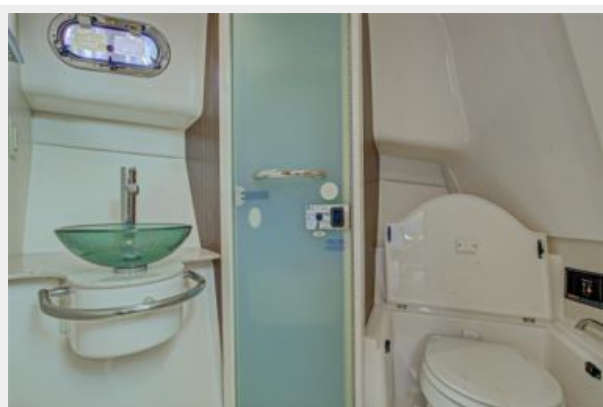
ФОТОГРАФИИ



















КОНТАКТЫ

Андрей Шестаков (Andrey Shestakov) – ведущий яхтенный брокер отдела продаж яхт и судов компании Shestakov Yacht Sales Inc. Официальный представитель Shestakov Yacht Sales Inc. для русскоговорящих клиентов в центральном офисе компании в Майами/Форт Лодердейл/Флорида/США.

Контактная информация

Email: **andrey@shestakovyachtsales.com**

Web: shestakovyachtsales.com

Телефоны

Краснодарский край: **+7(918)465-66-44**

США, Майами, Флорида: **+1(954)274-4435**

Время работы

Понедельник – Суббота: **9:00 - 21:00**
EDT

Воскресенье: **Закрито**

Адрес



Harbour Towne Marina, 850 NE 3rd St,
STE 213, Dania, FL 33004