

NAMASTE — MANGUSTA



Builder: MANGUSTA

Year Built: 2017

Model: Mega Yacht

Price: PRICE ON APPLICATION

Location: United States

LOA: 141' 0" (42.98m)

Beam: 28' 5" (8.66m)

Max Draft: 8' 2" (2.49m)

Cruise Speed: 13 Kts. (15 MPH)

Max Speed: 16 Kts. (18 MPH)

Our experienced yacht broker, Andrey Shestakov, will help you choose and buy a yacht that best suits your needs **Namaste — MANGUSTA** from our catalogue. Presently, at Shestakov Yacht Sales Inc., we have a wide variety of yachts available on our sale's list. We also work in close contact with all the big yacht manufacturers from all over the world.

If you would like to buy a yacht **Namaste — MANGUSTA** or would like help answering any questions concerning purchasing, selling or chartering a yacht, please call **+1(954)274-4435**

TABLE OF CONTENTS

TABLE OF CONTENTS	2
SPECIFICATIONS	4
Overview	4
Basic Information	4
Dimensions	4
Speed, Capacities and Weight	4
Accommodations	5
Hull and Deck Information	5
Engine Information	5
DETAILED INFORMATION	6
Accommodations	6
Main Deck: Salon/Dining Areas"	6
Main Deck: Master Suite	6
Main Deck: Exterior	6
Upper Deck: Exterior	7
Sun Deck: Exterior	7
Main Deck: Galley	8
Upper Deck: Salon / Cinema Room	8
Upper Deck: Foyers & Captains Cabin	8
Upper Deck: Pilothouse	9
Lower Deck: Guest Staterooms	9
Crew Area:	9
Crew Cabins:	9
Tender Garage:	10
Beach House:	10
Machinery & Technical Spaces:	10
Exclusions	10
Disclaimer	10

PHOTOS	12
CONTACTS	15
Contact details	15
Telephones	15
Office hours	15
Address	15

SPECIFICATIONS

Overview

PRELIMINARY SPECS NOT FOR SALE IN US WATERS TO US CITIZENS/RESIDENTS On its very first world appearance, this brand new beautiful three deck model, Mangusta Oceano 42, was awarded the World Yachts Trophies in theBest Layout, 38-54M category. Designed by Alberto Mancini, Namasté has been a major step forward for Overmarine Group Shipyard in building steel and aluminum full displacement yachts. The vessel is a steel hulled full displacement oceangoing motoryacht with a bulbous bow and bilge keels. She is beautifully modern and elegant which expresses her proportions through a blend of taught, sharplines,combined with softer sections. With the light aboard. **Hull Material: Steel Hull, Aluminum Super Structure

Basic Information

Category: Mega Yacht	Model Year: 2017
Year Built: 2017	Country: United States
Fly Bridge: Yes	Cockpit: Yes

Dimensions

LOA: 141' 0" (42.98m)	LWL: 120' 5" (36.70m)
Beam: 28' 5" (8.66m)	Max Draft: 8' 2" (2.49m)

Speed, Capacities and Weight

Cruise Speed: 13 Kts. (15 MPH)	Max Speed: 16 Kts. (18 MPH)
Displacement: 859794 Pounds	

Accommodations

Total Cabins: 5	Total Heads: 12
Captain Cabin: True	Crew Cabin: 3

Hull and Deck Information

Hull Material: Aluminum

Engine Information

Engines: 2	Manufacturer: MTU
Model: 12V2000	Engine Type: Inboard
Fuel Type: Diesel	

DETAILED INFORMATION

Accommodations

- **NO. OF CABINS:** FIVE GUEST, ONE CAPTAINS CABIN + THREE CREW
- **ENCLOSED HEADS:** TWELVE

Main Deck: Salon/Dining Areas"

The interior comes with the standard layout for a vessel of this size and quality. Entering the salon from the aft deck, there is a cabinet to port that has an ice maker and refrigerator while the starboard side has a storage locker and sink. Forward to port are sofas that surround a coffee table, the port side sofa has a powered back rest, the TV is aft to starboard. Sliding glass doors are to port and starboard. The salon is open to the formal dining area but divided by storage lockers that open to the dining area and comes with a glass and marble table and seating for eight. The galley is forward to port through a foyer that has a side entrance to the deck, two refrigerators are in the foyer a stairwell to the sky lounge and a stairwell inboard to the crew cabins. The starboard foyer leads to the master stateroom, forward on the inboard side is the day head, on the outboard side is a glass sliding door to the side deck. A stairwell leads down to the guest staterooms and another leads up to the sky lounge.

Main Deck: Master Suite

The full beam master stateroom comes with a queen-sized berth on the centerline aft with the TV on the forward bulkhead behind a mirror and arm chairs to port and starboard. At the entrance to stateroom to port and starboard are hanging lockers with drawers.

His and hers heads are forward to port and starboard with a shared shower between, the shower has a "Steam" function, above the heads and shower are windows that look into the swimming pool.

There is a vanity to port and a unique powered window and balcony to starboard.

.

Main Deck: Exterior

The vessel comes with the standard layout and as listed previously in this report was well found. All equipment was found in good condition.

There is a port stairway that lead down from the aft deck to the swim platform and give access to the "beach house". There is a large teak covered passarelle that extends out from the starboard

side aft and a powered gangway amidships on the starboard side that is hidden when retracted. Additional stairs to starboard lead from the aft deck to the “Upper Deck” and continue up to the “Sundeck”.

The aft deck is large and allows easy handling of docking lines and access into the salon through glass and stainless-steel electric doors.

Centerline aft is a built-in sofa with a table and occasional chairs forward.

Forward to port on the side deck is the engine room access door and on the starboard side deck is a stairwell to the “Beach Club”

Large side decks on the main level lead forward to teak covered stairs for the pilothouse, bow, and forward lounge access.

Port and starboard sliding doors lead into the salon with a door on the starboard side leading into the guest foyer, there are port and starboard boarding gates.

The pilot house is forward up the stairs with side entrances to the pilot house and wing stations to port and starboard.

Forward of the pilot house is a lounge area with a large sofa with storage below and two tables and just forward is the swimming pool with port and starboard storage lockers.

Teak stairs lead down to the foredeck where the two windlasses are securely installed with the chain locker forward on the centerline.

Forward are two Jet Skis with a davit to port and good storage in lockers.

Upper Deck: Exterior

This upper deck comes with large table with seating for eight. Glass doors give entry to the upper salon/media room. To port is a console with a sink, ice maker and refrigerator with a drop-down TV forward on the centerline.

Aft is a large sofa with a built-in sun pad to port and a table, the stairs to the sundeck are to starboard.

Sun Deck: Exterior

The expansive sun deck is accessed from stairs to starboard or from a sliding door forward from the sky lounge area. Forward is a wet bar with a wine cooler, BBQ, ice maker and refrigerator, aft of the wet bar is a dining area with a glass and teak table and seating for eight. The life rafts are

installed outboard.

Aft of the dining area is a large console with storage and a TV on a power lift.

Aft of the console are three sofas with storage below in a “U” shape with a glass and stainless-steel table and all the way aft are four chaise loungers.

A hard top over the sun deck with LED accent lighting covers a large portion of this area. A mast mounted on the hard top has the radar scanners, navigation lights, and satellite domes all securely installed.

Main Deck: Galley

The galley is forward to port of the formal dining area and comes with all equipment in good working and clean condition. Four refrigerator/freezers are to starboard, the oven and stove top are forward with the sink to port.

Upper Deck: Salon / Cinema Room

This salon is accessed from the exterior through large sliding doors aft or from the starboard hallway that is accessed from the main deck foyer. The salon / media room comes with three large sofas to port, starboard and centerline with a large sectional ottoman between and the large curved TV mounted on the forward bulkhead. A true movie experience can be found with custom sound engineered for this area. Storage cabinets are to port and starboard with electric shades covering all the windows. There is a wine chiller to port in the outboard cabinetry.

Upper Deck: Foyers & Captains Cabin

From the starboard hallway one can go forward to the outboard day head or take the curved stairwell down to the main guest foyer on the main deck level.

There is an additional pass through to port leading to the captain’s cabin, pilothouse or stairwell up to the sundeck.

The Captain’s cabin is to forward in the port companionway and comes with a large berth outboard , good storage and the head is inboard. The port-side walk thru has the

stairs down to the galley area, stairs up to the “Sun Deck” and forward is the door into the pilot house with the AV/IT electronics stored throughout cabinetry in the companionway.

Upper Deck: Pilothouse

Visibility is excellent from this pilothouse that comes with two leather helm chairs in way of the helm and a sofa like bench seat aft. The helm console has been very well laid out with the large monitors forward and all controls, steering and electronics easy to hand.

There are port & starboard doors to access the wing stations. The well-equipped communications station is aft to starboard.

Lower Deck: Guest Staterooms

The lower guest passageway is accessed from the main foyer that leads to the guest companionway, there are water tight doors at the port and starboard aft staterooms.

The port forward stateroom comes with twin single berths forward and a Pullman above the inboard bed. The TV is behind a mirror on the aft bulkhead, there is good storage.

The head and shower stall are aft.

The port forward stateroom comes with a queen berth on the centerline forward, good storage and the TV behind a mirror on the aft bulkhead, the head and shower stall are aft.

The port aft stateroom comes with a queen birth on the centerline aft, there is good storage in lockers and drawers. The TV is behind a mirror on the forward bulkhead with the head and shower stall aft.

The starboard aft stateroom comes with side-by-side berths installed fore and aft with good storage in lockers and drawers. The TV is behind a mirror on the inboard bulkhead with the head and stall shower aft.

Crew Area:

The crew area is accessed from the port galley foyer and comes with a large dining area with expandable table to port. A food prep area with microwave, sink, and dishwasher to starboard and a laundry room outboard to starboard. The crew cabins are access from the forward companionway.

Crew Cabins:

There are three crew cabins that provide comfortable accommodations. All three cabins have bunk beds, ample storage, a TV and ensuite head/showers.

Forward to port in the companionway is a stairwell to the tender garage.

Tender Garage:

The tender garage is below the swimming pool and is accessed from the crew area companionway, the tender is installed athwart ship and has a large powered door on the starboard side, a horizontal davit is used to launch and retrieve the tender.

The swimming pool pumps and filters are installed on the forward bulkhead in the garage.

Beach House:

The beach house is aft and is accessed from either the starboard side deck or from port side transom gate that leads down to the swim platform when the door is open, the door creates the swim platform and has teak decking and windows.

Forward in the beach house is a wet bar with a sink, ice maker and refrigerator and a day head to starboard.

Port and starboard doors lead to technical spaces and the steering gear is accessed from port and starboard lockers aft.

Machinery & Technical Spaces:

These areas have multiple access points. The engine room is accessed from the aft deck via the port stairwell and comes with a large control room aft.

Both main engines ran well and the generators are each capable of carrying the entire vessels electrical load. There is excellent access to all of the equipment to carry out all service work.

Generators:

- Port Generator: 2324 hrs
- Stbd generator: 2523 hrs

Exclusions

Owner's personal belongings.

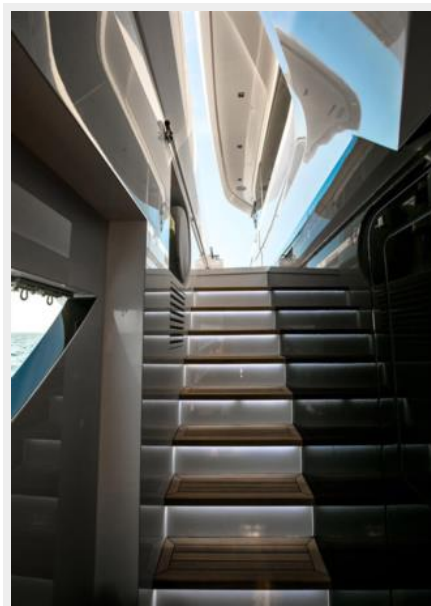
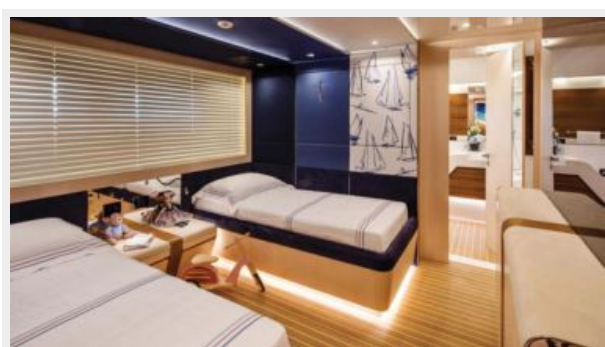
Disclaimer

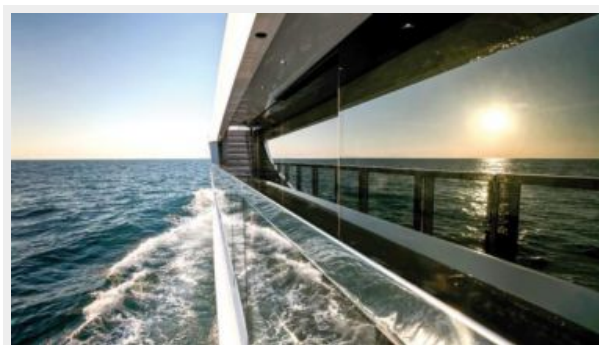
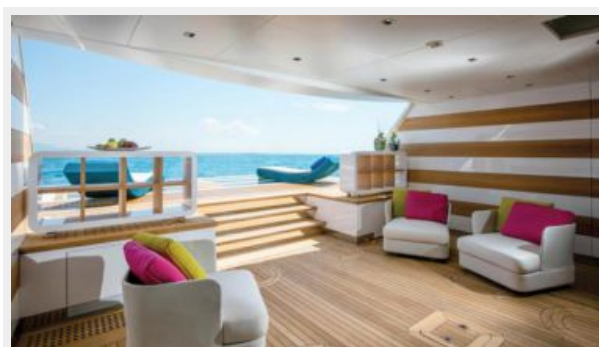
The Company offers the details of this vessel or yacht in good faith but cannot guarantee or warrant the accuracy of this information nor warrant the condition of the vessel. A buyer should instruct his representatives, agents, or his surveyors, to investigate such details as the buyer

desires validated. This vessel or yacht is offered subject to prior sale, price change, or withdrawal without notice.

PHOTOS







CONTACTS

Andrey Shestakov, leading yacht broker of the sales department of Shestakov Yacht Sales Inc. Shestakov Yacht Sales Inc., the official representative of the Miami/Fort Lauderdale FL headquarters.

Contact details

Email:
andrey@shestakovyachtsales.com

Web: shestakovyachtsales.com/en/

Telephones

USA: **+1(954)274-4435**

Office hours

Monday – Saturday: **9:00 - 21:00 EDT**

Sunday: **closed**

Address



Harbour Towne Marina, 850 NE 3rd St,
STE 213, Dania, FL 33004