

CHB 45' — CHB



Builder: CHB

Year Built: 1981

Model: Trawler Yacht

Price: PRICE ON APPLICATION

Location: Mexico

LOA: 45' (13.72mm)

Beam: 14.5

Min Draft: 4' 5" (1.35mm)

Cruise Speed: 8 Knots Kts. (9 MPH)

Max Speed: 14 Knots Kts. (16 MPH)

Our experienced yacht broker, Andrey Shestakov, will help you choose and buy a yacht that best suits your needs **CHB 45' — CHB** from our catalogue. Presently, at Shestakov Yacht Sales Inc., we have a wide variety of yachts available on our sale's list. We also work in close contact with all the big yacht manufacturers from all over the world.

If you would like to buy a yacht **CHB 45' — CHB** or would like help answering any questions concerning purchasing, selling or chartering a yacht, please call **+1(954)274-4435**

TABLE OF CONTENTS

TABLE OF CONTENTS	2
SPECIFICATIONS	4
Overview	4
Basic Information	5
Dimensions	5
Speed, Capacities and Weight	6
Accommodations	6
Hull and Deck Information	6
Engine Information	6
PHOTOS	7
TO STARBOARD	7
FLYBRIDGE HELM	7
FLYBRIDGE AFT	7
FLYBRIDGE HELM	7
FLYBRIDGE DETAIL	8
FLYBRIDGE HELM SEATING	8
FLYBRIDGE MAST	8
BOW	8
BOW DECK	9
STARBOARD WEATHER DECK	9
SALON AFT	9
SALON FORWARD	9
GALLEY	10
DISTRIBUTION PANEL	10
FORWARD / MASTER STATEROOM	10
MASTER HEAD	10
PORT GUEST STATEROOM	10
PORT GUEST STATEROOM	10

CONTACTS	11
Contact details	11
Telephones	11
Office hours	11
Address	11

SPECIFICATIONS

Overview

FANTASTIC BUY!! PRICE REDUCED BY \$30,000 USD.

This popular cruising yacht is a well known Ed Monk Trawler Sedan design, CHB built Europa model. These fine vessels are known for their excellent handling in all seas and the spacious accommodations and storage areas throughout. Her design is typical sedan, with staterooms and heads down and forward of salon. She is turn key and has been constantly maintained and improved upon by her current owner. Located in Marina Vallarta, at the center of Puerto Vallarta, only 5 minutes from the international airport, she is ready for new adventures and a new owner.

WALK THROUGH:
Forepeak-Ground Tackle: Clear forward under bow deck is located the chain and rode locker.
Master Stateroom: Aft of Forepeak; Centerline queen berth, drawer and hanging lockers storage, private head and shower, overhead deck hatch, reading lamps,
Guest Stateroom: Lying portside, the stateroom has ample drawer and locker storage, sleeps 2 persons in one double berth, reading lamp.
Guest Head and Shower: Lies to starboard opposite guest stateroom.
Salon: Up and aft from Staterooms lies the Main Salon, which incorporates the galley and lower helm. The Galley lies forward and to port with ample storage and counter space for food preparation, including a propane stove and oven, microwave, air conditioning, ice box, fan. The Lower Helm lies forward and to starboard with pilot seat, ships compass, wheel steering, engine and instrument controls and gauges, and access to navigation electronics; starboard door to weather deck is located just aft of pilot seat. The Main Salon is aft the galley and helm station, and includes full size refrigerator mounted to starboard, following aft a settee with storage under, and a built-in cabinet with TV mounted above; Aft bulkhead with double door entrance onto aft deck area. To port lies a u-shaped settee running from aft bulkhead to galley with large rectangular table. Full 360 degree windows (including blinds) surround the salon allowing for abundant natural light and good visibility for close quarter navigation and docking.
Aft Cockpit with Swim Step: Clear aft of Salon, the cockpit is spacious, allowing for transom gate boarding from / to swim step, and includes storage below decks.
Flybridge: Ladder access from aft cockpit, this flybridge is huge; includes center-line navigation station clear forward, with wheel steering, full engine controls and instrument gauges, ships compass, GPS, VHF. Just aft navigation station is front front and aft seating for pilot and guests with storage under; radar mast follows (includes spar double deck lights, flag halyard, mounted radar; full bimini top covers forward areas of flybridge; aft deck area has ample space for tender and other equipment storage.
Bow Deck: 2 steps up from weather decks port and starboard; Bowsprit with double rode roller pulley's, windlass, main ships anchor, stainless steel covered Sampson post with mounted SS cleats.
DECK EQUIPMENT: Throw-able Ring-buoy Main anchor (plow) Storm anchor Ample mooring and docking lines and fenders Spot light; deck lights Flag mast Recent new paint on house 12' Tender FRP Cat design with Yamaha 5 hp 2 stroke outboard engine Reported USCG safety required equipment on board and in serviceable condition.
HULL: Reported sound; props 26x33, shafts 2" All metal underwater fittings reported zinced
ELECTRICAL: Mirage Air-conditioner ABTX salon service 3 ships automatic bilge pumps 4 X 8 D Batteries (2 new) Onan /

Cummins Genset 12KWAC/DC Breaker Distribution panels Battery Charger 10 amp 12V / 110 Service throughout Shore Power Cord with protected 30 amp inlet onboard Navigation lights Ships horn VHF antennas Tankless Hot Water Heater System Pressurized water system (fresh and sea water) Sansong flat screen TV Master and guest heads new macerators Whirlpool 110 Refrigerator **GROUND TACKLE:** Simpson Lawrance Windlass 400' Triple B Chain reported CQR 45 Plow Anchor **MECHANICAL:** New hoses installed on main engines 2 Racor main engine fuel filters (primary & secondary) Heath Transmissions Hydraulic steering; Ram, Rudder & Crossover bar controlled. Cable transmission gear and throttle controls Recent upgrades include new exhaust manifold systems Fresh water plumbing system replaced Complete full mechanics tool set and standard yacht tools **NAVIGATION ELECTRONICS:** ICOM HF Radio Uniden VHF Simrad Radar 24 mile Simrad Autopilot Samsung Chart Plotter ICOM GPS Kenyon speed indicator (kts) Rudder angle indicator Pioneer Stereo/CD system USB capable with 2 amplifiers (service to flybridge, salon, cockpit) Signet Depth sounder Ships Clock and Barometer Lev-O-Gage Murphy MT-90 Digital Tachometer

Mechanical Disclaimer Engine hours are as of the date of the original listing and are a representation of what the listing broker is told by the owner and/or actual reading of the engine hour meters. The broker cannot guarantee the true hours. It is the responsibility of the purchaser and/or his agent to verify engine hours, warranties implied or otherwise and major overhauls as well as all other representations noted on the listing brochure.

Disclaimer The company offers the details of this vessel in good faith but cannot guarantee or warrant the accuracy of this information nor warrant the condition of the vessel. A buyer should instruct his agents, or his surveyors, to investigate such details as the buyer desires validated. This vessel is offered subject to prior sale, price change or withdrawal without notice.

Basic Information

Category: Trawler Yacht

Sub Category: Europa

Model Year: 1981

Year Built: 1981

Country: Mexico

Dimensions

LOA: 45' (13.72mm)

LWL: 42' 2" (12.85mm)

Beam: 14.5

Min Draft: 4' 5" (1.35mm)

Speed, Capacities and Weight

Cruise Speed: 8 Knots Kts. (9 MPH)

Max Speed: 14 Knots Kts. (16 MPH)

Water Capacity: 400 Gallons

Fuel Capacity: 800 Gal Gallons

Accommodations

Total Cabins: 2

Total Berths: 3

Sleeps: 4

Total Heads: 2

Hull and Deck Information

Hull Material: Fiberglass

Deck Material: Fiberglass over Wood

Hull Configuration: Semi-Displacement

Hull Color: White

Hull Designer: Ed Monk

Engine Information

Engines: 2

Manufacturer: CAT

Engine Type: Inboard

Fuel Type: Diesel

PHOTOS

TO STARBOARD



FLYBRIDGE HELM

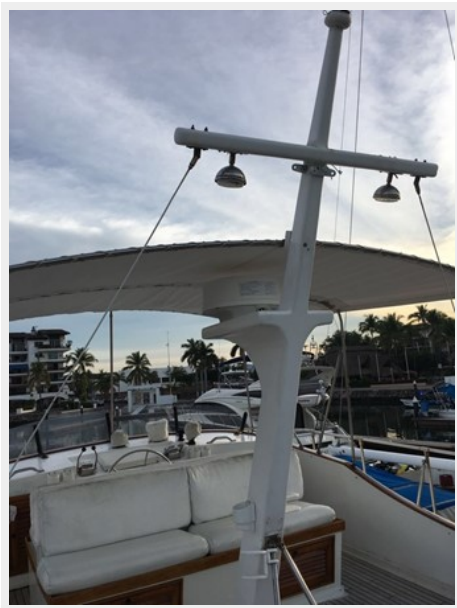


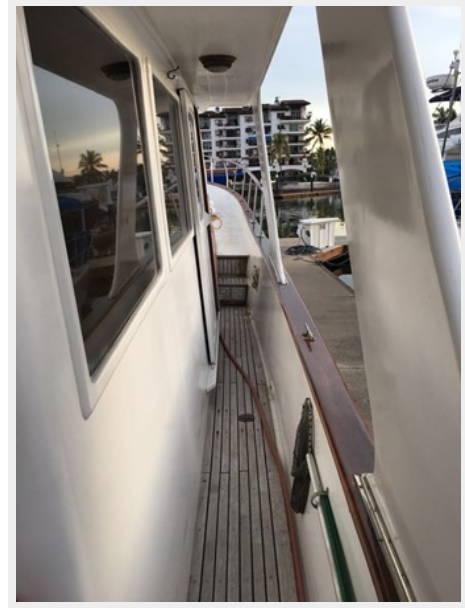
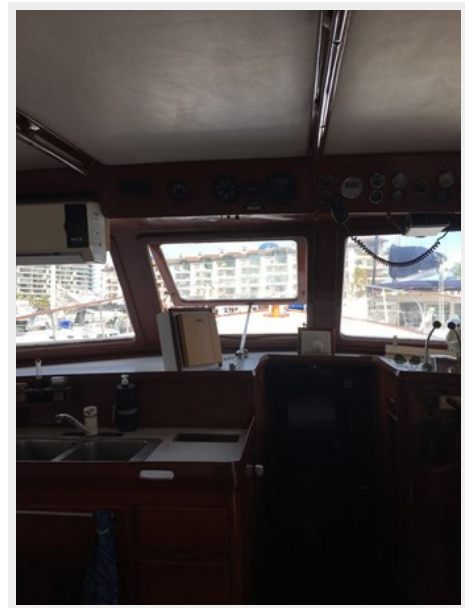
FLYBRIDGE AFT

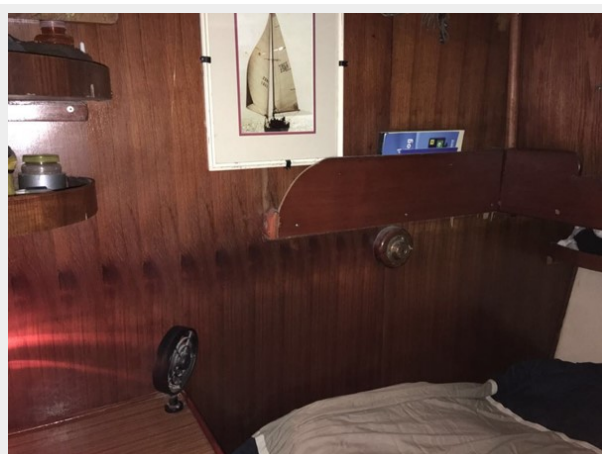


FLYBRIDGE HELM



FLYBRIDGE HELM SEATING**FLYBRIDGE DETAIL****FLYBRIDGE MAST****BOW**

BOW DECK**STARBOARD WEATHER DECK****SALON AFT****SALON FORWARD**

GALLEY**DISTRIBUTION PANEL****FORWARD / MASTER STATEROOM****MASTER HEAD****PORT GUEST STATEROOM****PORT GUEST STATEROOM**

CONTACTS

Andrey Shestakov, leading yacht broker of the sales department of Shestakov Yacht Sales Inc. Shestakov Yacht Sales Inc., the official representative of the Miami/Fort Lauderdale FL headquarters.

Contact details

Email:
andrey@shestakovyachtsales.com

Web: shestakovyachtsales.com/en/

Telephones

USA: **+1(954)274-4435**

Office hours

Monday – Saturday: **9:00 - 21:00 EDT**

Sunday: **closed**

Address



Harbour Towne Marina, 850 NE 3rd St,
STE 213, Dania, FL 33004