

## СНВ 45' — СНВ



**Судостроитель:** СНВ

**Год постройки:** 1981

**Модель:** Trawler Yacht

**Цена:** **ЦЕНА ЯХТЫ ПО ЗАПРОСУ**

**Местонахождение:** Mexico

**Длина общая:** 45' (13.72mm)

**Ширина:** 14.5

**Мин. осадка:** 4' 5" (1.35mm)

**Крейс. скорость:** 8 Knots Kts. (9 MPH)

**Макс. скорость:** 14 Knots Kts. (16 MPH)

Купить **СНВ 45' — СНВ** а также выбрать подходящую вам яхту из нашего каталога яхт вам поможет опытный яхтенный брокер Андрей Шестаков. На сегодняшний день компания **Shestakov Yacht Sales Inc.** имеет большое количество яхт в собственном списке продаж, а также тесно сотрудничает со всеми крупными яхтенными производителями по всему миру.

Для того чтобы купить яхту **СНВ 45' — СНВ** а также проконсультироваться по любому вопросу связанному с покупкой, продажей, чартером яхт позвоните по телефону **+7(918)465-66-44**.

# ОГЛАВЛЕНИЕ

ОГЛАВЛЕНИЕ	2
ХАРАКТЕРИСТИКИ	4
Обзор	4
Основная информация	5
Размеры	5
Скорость, вместимость и масса	6
Размещение	6
Корпус и палуба	6
Информация о двигателе	6
ФОТОГРАФИИ	7
TO STARBOARD	7
FLYBRIDGE HELM	7
FLYBRIDGE AFT	7
FLYBRIDGE HELM	7
FLYBRIDGE DETAIL	8
FLYBRIDGE HELM SEATING	8
FLYBRIDGE MAST	8
BOW	8
BOW DECK	9
STARBOARD WEATHER DECK	9
SALON AFT	9
SALON FORWARD	9
GALLEY	10
DISTRIBUTION PANEL	10
FORWARD / MASTER STATEROOM	10
MASTER HEAD	10
PORT GUEST STATEROOM	10
PORT GUEST STATEROOM	10

---

КОНТАКТЫ	11
Контактная информация	11
Телефоны	11
Время работы	11
Адрес	11

# ХАРАКТЕРИСТИКИ

## Обзор

FANTASTIC BUY!! PRICE REDUCED BY \$30,000 USD.

This popular cruising yacht is a well known Ed Monk Trawler Sedan design, CHB built Europa model. These fine vessels are known for their excellent handling in all seas and the spacious accommodations and storage areas throughout. Her design is typical sedan, with staterooms and heads down and forward of salon. She is turn key and has been constantly maintained and improved upon by her current owner. Located in Marina Vallarta, at the center of Puerto Vallarta, only 5 minutes from the international airport, she is ready for new adventures and a new owner.

**WALK THROUGH:Forepeak-Ground Tackle;**Clear forward under bow deck is located the chain and rode locker.**Master Stateroom:**Aft of Forepeak; Centerline queen berth, drawer and hanging lockers storage, private head and shower, overhead deck hatch, reading lamps, **Guest Stateroom:**Lying portside, the stateroom has ample drawer and locker storage, sleeps 2 persons in one double berth, reading lamp.**Guest Head and Shower:**Lies to starboard opposite guest stateroom.**Salon:**Up and aft from Staterooms lies the Main Salon, which incorporates the galley and lower helm. The Galley lies forward and to port with ample storage and counter space for food preparation, including a propane stove and oven, microwave, air conditioning, ice box, fan. The Lower Helm lies forward and to starboard with pilot seat, ships compass, wheel steering, engine and instrument controls and gauges, and access to navigation electronics; starboard door to weather deck is located just aft of pilot seat.The Main Salon is aft the galley and helm station, and includes full size refrigerator mounted to starboard, following aft a settee with storage under, and a built-in cabinet with TV mounted above; Aft bulkhead with double door entrance onto aft deck area. To port lies a u-shaped settee running from aft bulkhead to galley with large rectangular table. Full 360 degree windows (including blinds) surround the salon allowing for abundant natural light and good visibility for close quarter navigation and docking.**Aft Cockpit with Swim Step:**Clear aft of Salon, the cockpit is spacious, allowing for transom gate boarding from / to swim step, and includes storage below decks.**Flybridge:**Ladder access from aft cockpit, this flybridge is huge; includes center-line navigation station clear forward, with wheel steering, full engine controls and instrument gauges, ships compass, GPS, VHF. Just aft navigation station is front front and aft seating for pilot and guests with storage under; radar mast follows (includes spar double deck lights, flag halyard, mounted radar; full bimini top covers forward areas of flybridge; aft deck area has ample space for tender and other equipment storage.**Bow Deck:**2 steps up from weather decks port and starboard; Bowsprit with double rode roller pulley's, windlass, main ships anchor, stainless steel covered Sampson post with mounted SS cleats. **DECK EQUIPMENT:**Throw-able Ring-buoyMain anchor (plow)Storm anchorAmple mooring and docking lines and fenders Spot light; deck lightsFlag mastRecent new paint on house12' Tender FRP Cat design with Yamaha 5 hp 2 stroke outboard engineReported USCG safety required equipment on board and in serviceable condition.**HULL:**Reported sound; props 26x33, shafts 2" All metal underwater fittings reported zinced**ELECTRICAL:**Mirage Air-conditioner ABTX salon service 3 ships automatic bilge pumps4 X 8 D Batteries (2 new)Onan /

Cummins Genset 12KWAC/DC Breaker Distribution panels Battery Charger 10 amp 12V / 110 Service throughout Shore Power Cord with protected 30 amp inlet onboard Navigation lights Ships horn VHF antennas Tankless Hot Water Heater System Pressurized water system (fresh and sea water) Sansong flat screen TV Master and guest heads new macerators Whirlpool 110 Refrigerator **GROUND TACKLE:** Simpson Lawrance Windlass 400' Triple B Chain reported CQR 45 Plow Anchor **MECHANICAL:** New hoses installed on main engines 2 Racor main engine fuel filters (primary & secondary) Heath Transmissions Hydraulic steering; Ram, Rudder & Crossover bar controlled. Cable transmission gear and throttle controls Recent upgrades include new exhaust manifold systems Fresh water plumbing system replaced Complete full mechanics tool set and standard yacht tools **NAVIGATION ELECTRONICS:** ICOM HF Radio Uniden VHF Simrad Radar 24 mile Simrad Autopilot Samsung Chart Plotter ICOM GPS Kenyon speed indicator (kts) Rudder angle indicator Pioneer Stereo/CD system USB capable with 2 amplifiers ( service to flybridge, salon, cockpit ) Signet Depth sounder Ships Clock and Barometer Lev-O-Gage Murphy MT-90 Digital Tachometer

**Mechanical Disclaimer** Engine hours are as of the date of the original listing and are a representation of what the listing broker is told by the owner and/or actual reading of the engine hour meters. The broker cannot guarantee the true hours. It is the responsibility of the purchaser and/or his agent to verify engine hours, warranties implied or otherwise and major overhauls as well as all other representations noted on the listing brochure.

**Disclaimer** The company offers the details of this vessel in good faith but cannot guarantee or warrant the accuracy of this information nor warrant the condition of the vessel. A buyer should instruct his agents, or his surveyors, to investigate such details as the buyer desires validated. This vessel is offered subject to prior sale, price change or withdrawal without notice.

## Основная информация

**Тип судна:** Trawler Yacht

**Подкатегория:** Европа

**Модельный год:** 1981

**Год постройки:** 1981

**Страна:** Mexico

## Размеры

**Длина общая:** 45' (13.72mm)

**Длина по ватерлинии:** 42' 2" (12.85mm)

**Ширина:** 14.5

**Мин. осадка:** 4' 5" (1.35mm)

## Скорость, вместимость и масса

---

**Крейс. скорость:** 8 Knots Kts. (9 MPH)

**Макс. скорость:** 14 Knots Kts. (16 MPH)

**Вместимость воды:** 400 Gallons

**Объем топливного бака:** 800 Gal Gallons

## Размещение

---

**Всего кают:** 2

**Всего коек:** 3

**Спальные места:** 4

**Всего ком. состава:** 2

## Корпус и палуба

---

**Материал корпуса:** Fiberglass

**Материал палубы:** Fiberglass over Wood

**Комплектация корпуса:** Semi-Displacement

**Цвет корпуса:** White

**Дизайнер корпуса:** Ed Monk

## Информация о двигателе

---

**Двигатели:** 2

**Производитель:** CAT

**Тип двигателя:** Inboard

**Тип топлива:** Diesel

# ФОТОГРАФИИ

**TO STARBOARD**



**FLYBRIDGE HELM**



**FLYBRIDGE AFT**



**FLYBRIDGE HELM**



### FLYBRIDGE HELM SEATING



### FLYBRIDGE DETAIL



### FLYBRIDGE MAST



### BOW





**BOW DECK**



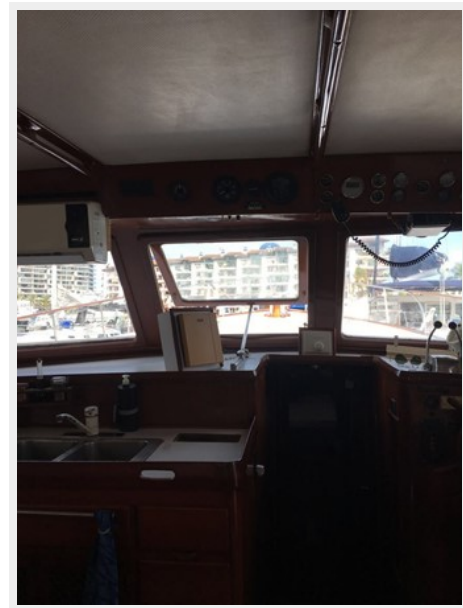
**STARBOARD WEATHER DECK**



**SALON AFT**



**SALON FORWARD**



**GALLEY**



**DISTRIBUTION PANEL**



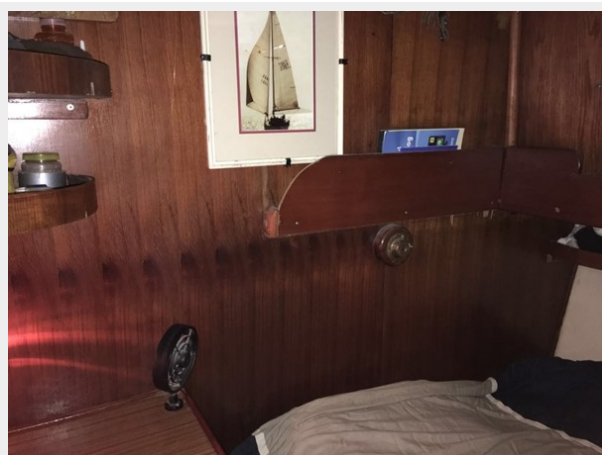
**FORWARD / MASTER STATEROOM**



**MASTER HEAD**



**PORT GUEST STATEROOM**



**PORT GUEST STATEROOM**



# КОНТАКТЫ

---

Андрей Шестаков (Andrey Shestakov) – ведущий яхтенный брокер отдела продаж яхт и судов компании Shestakov Yacht Sales Inc. Официальный представитель Shestakov Yacht Sales Inc. для русскоговорящих клиентов в центральном офисе компании в Майами/Форт Лодердейл/Флорида/США.

## Контактная информация

---

Email: [andrey@shestakovyachtsales.com](mailto:andrey@shestakovyachtsales.com)

Web: [shestakovyachtsales.com](http://shestakovyachtsales.com)

## Телефоны

---

Краснодарский край: **+7(918)465-66-44**

США, Майами, Флорида: **+1(954)274-4435**

## Время работы

---

Понедельник – Суббота: **9:00 - 21:00**  
EDT

Воскресенье: **Закрето**

## Адрес

---



Harbour Towne Marina, 850 NE 3rd St,  
STE 213, Dania, FL 33004